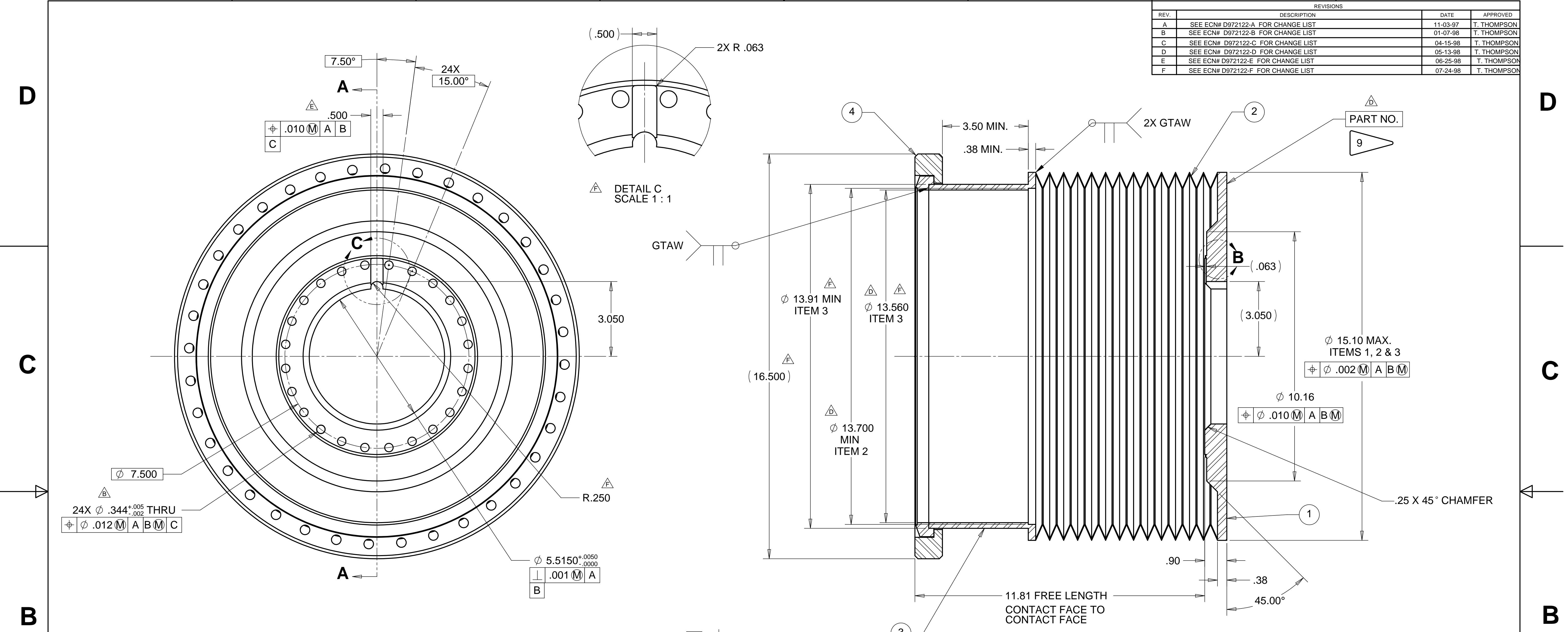
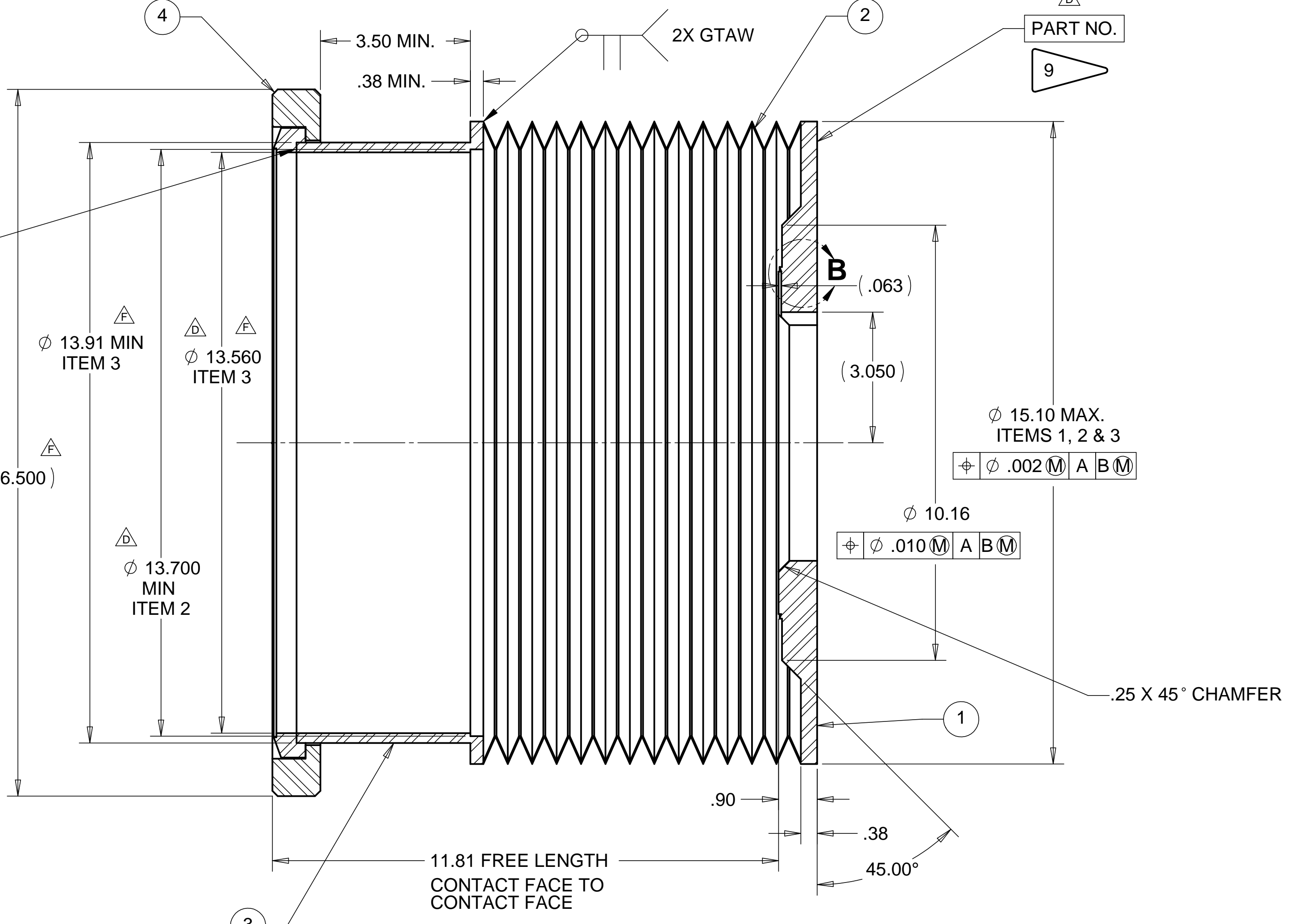
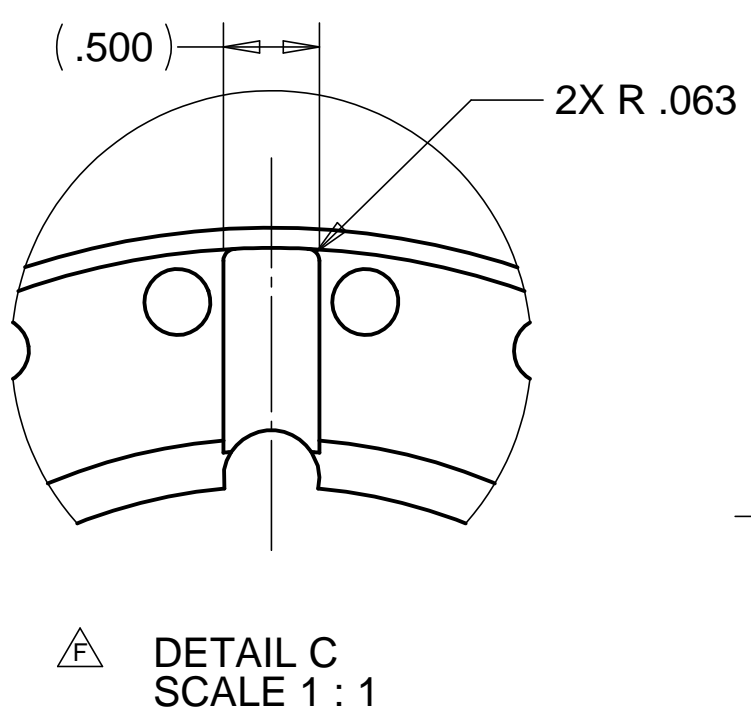


8 7 6 5 4 3 2 1

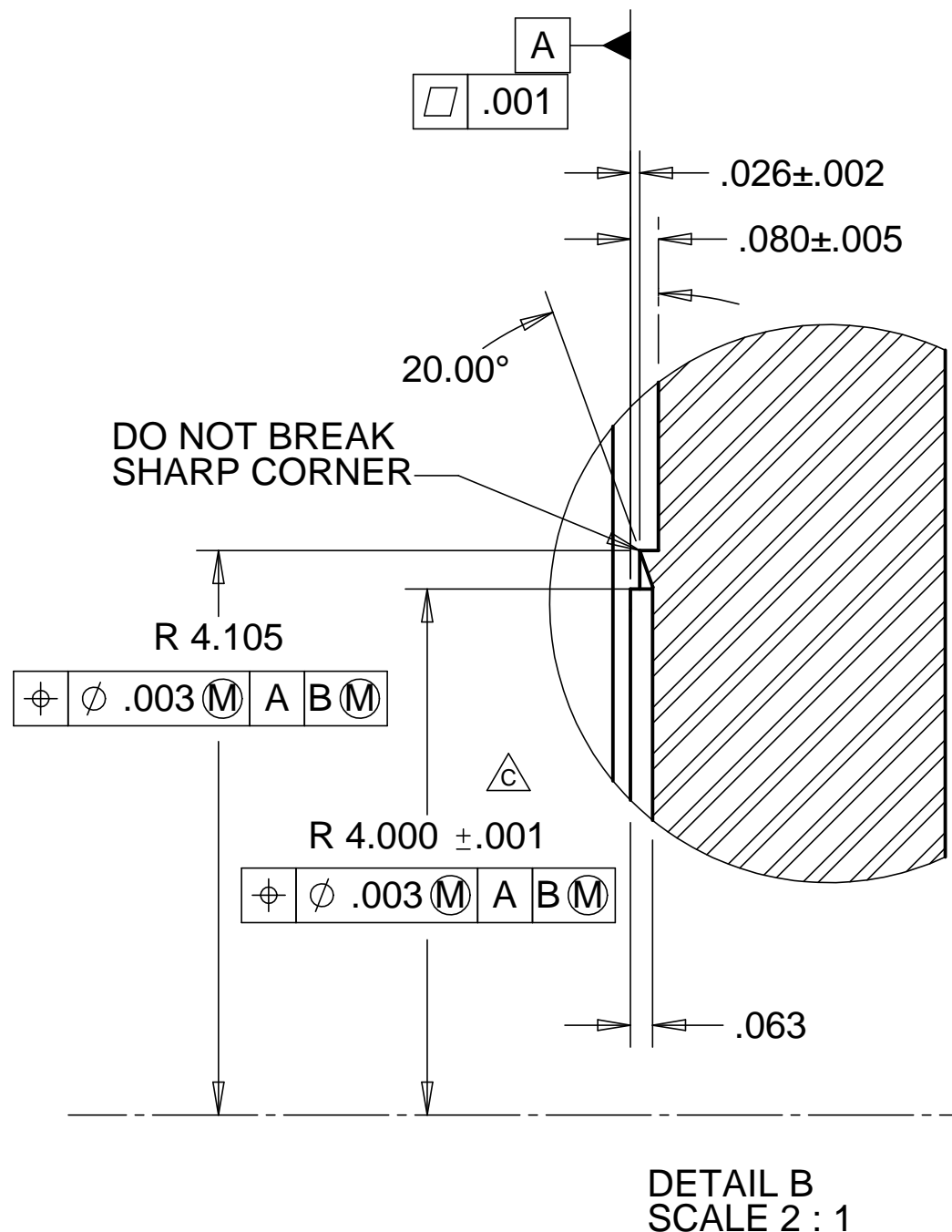
REV.	DESCRIPTION	DATE	APPROVED
A	SEE ECN# D972122-A FOR CHANGE LIST	11-03-97	T. THOMPSON
B	SEE ECN# D972122-B FOR CHANGE LIST	01-07-98	T. THOMPSON
C	SEE ECN# D972122-C FOR CHANGE LIST	04-15-98	T. THOMPSON
D	SEE ECN# D972122-D FOR CHANGE LIST	05-13-98	T. THOMPSON
E	SEE ECN# D972122-E FOR CHANGE LIST	06-25-98	T. THOMPSON
F	SEE ECN# D972122-F FOR CHANGE LIST	07-24-98	T. THOMPSON



24X  $\phi .344^{+.005}_{-.002}$  THRU  
 $\phi .012$  A B M C



- NOTES: UNLESS OTHERWISE SPECIFIED:
- ALL DIMENSIONS IN INCHES
  - DIMENSIONS AND TOLERANCING PER ASME Y14.5M-1994
  - SURFACE TEXTURE PER ANSI/ASME B 46.1-1985
  - REMOVE ALL BURRS AND BREAK SHARP EDGES TO A MAXIMUM OF .015
  - ALL INSIDE CORNERS TO BE .015 RADIUS MAX
  - COUNTERSINK 82 DEGREES ALL TAPPED HOLES TO MAJOR DIAMETER
  - COUNTERSINK 82 DEGREES APPROXIMATELY .03/.06 DEEP ALL DRILLED HOLES
  - PARTS TO BE THOROUGHLY CLEANED TO REMOVE ALL OIL, GREASE, DIRT AND CHIPS
  - PART NUMBER (DRAWING NO., DASH NO., REVISION NO., SERIAL NO.) TO BE CLEARLY MARKED ON THE PART OUTSIDE OF A  $\phi$  14.0.
  - ALL FABRICATION, CLEANING, AND HANDLING MAINTAINED TO HYTEC SPECIFICATION: HYTEC-TS-LIGO-04.



SECTION A-A

WEIGHT: 60.6 lbs.

ITEM NO.	QTY.	PART NO.	DESCRIPTION	MATERIAL
1	1		END FLANGE	304 VACUUM REMELT SST
2	1		CAPSULE	AM-350
3	1		FLANGE SUB ASSEMBLY	304 VACUUM REMELT SST
4	1	100040	MDC ROTATABLE DEL-SEAL FLANGE, 16.50in. NOM. O.D.	

PARTS LIST				HYTEC, INC	
UNLESS OTHERWISE SPECIFIED: DIMENSIONS ARE IN INCHES -TOLERANCES-		CAD GENERATED DRAWING, DO NOT MANUALLY UPDATE DO NOT SCALE DRAWING		TITLE	
DECIMALS XX = +/- .03 XXX = +/- .010		ANGULAR = +/- .30° SURFACE FINISH = 250		LIGO BSC EXPANSION BELLOWS	
FINISH	ALL MACHINED SURFACES 32 RMS	SIGNATURE	DATE	DWG. NO.	SIZE SHEET NO.
PART NO.	D972122-1	DESIGNED	ROGER L. SMITH 5-28-97	D972122	D 1 of 1
		DRAWN	ROGER L. SMITH 5-28-97		
		CHECKED	HARRY SALAZAR 6-6-97	SCALE 1/2	REVISION F
		ENGR.	T. THOMPSON 6-16-97		
		APPROVED	T. THOMPSON 6-16-97		

8 7 6 5 4 3 2 1