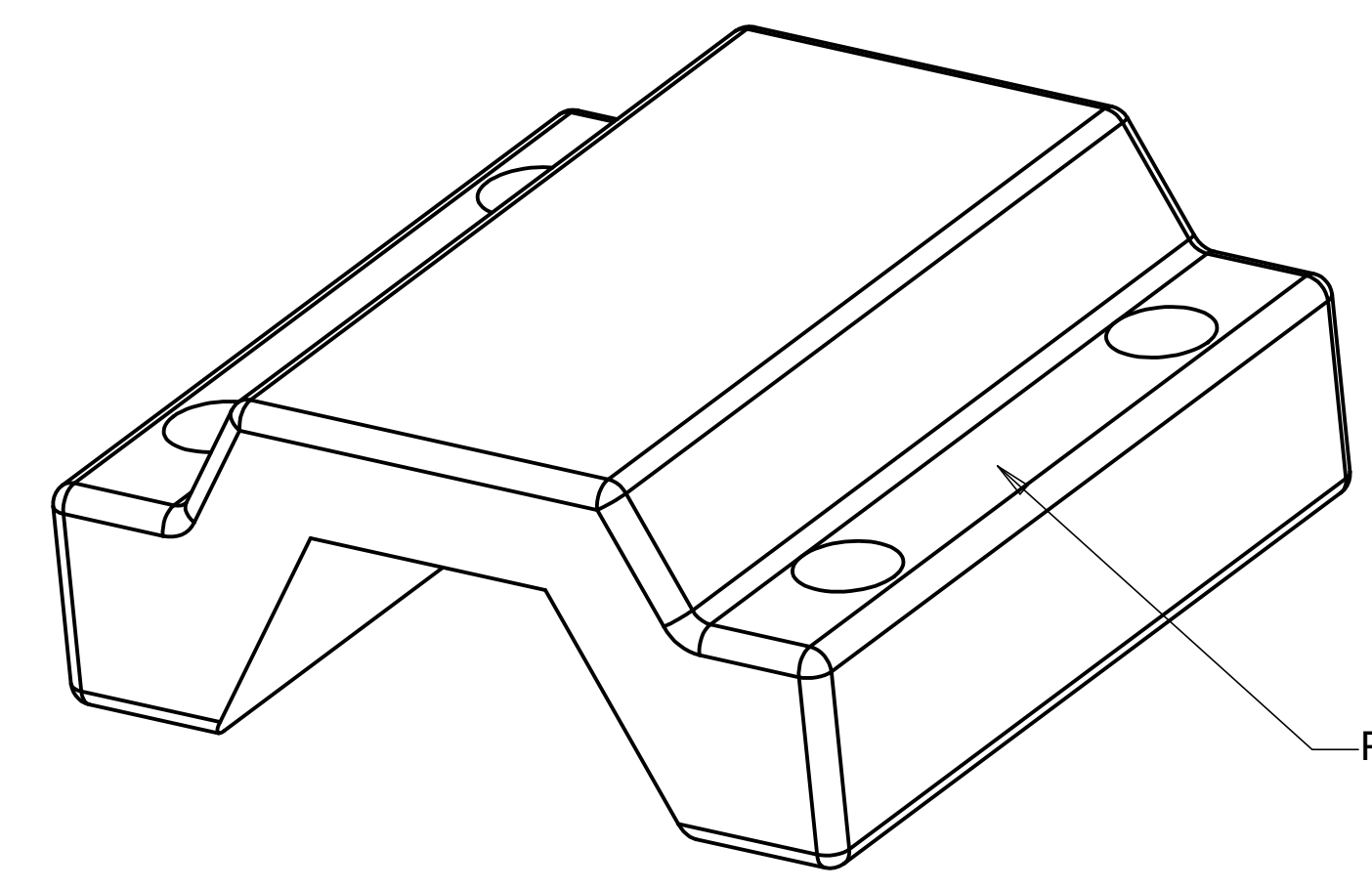
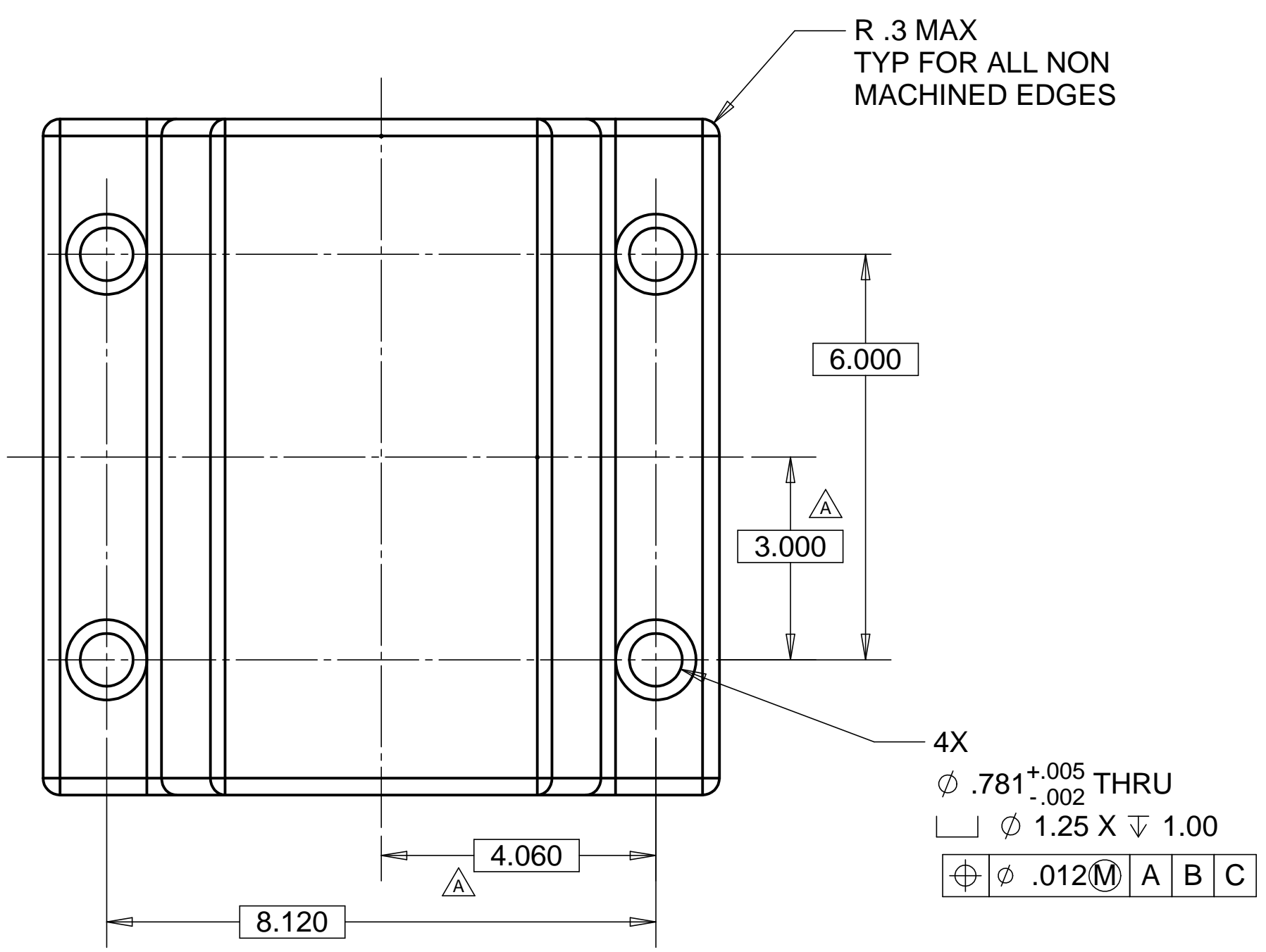


8 7 6 5 4 3 2 1

REVISIONS			
REV.	DESCRIPTION	DATE	APPROVED
A	SEE ECN# D972124-A FOR CHANGE LIST	11-03-97	T. THOMPSON
B	SEE ECN# D972124-B FOR CHANGE LIST	12-01-97	T. THOMPSON

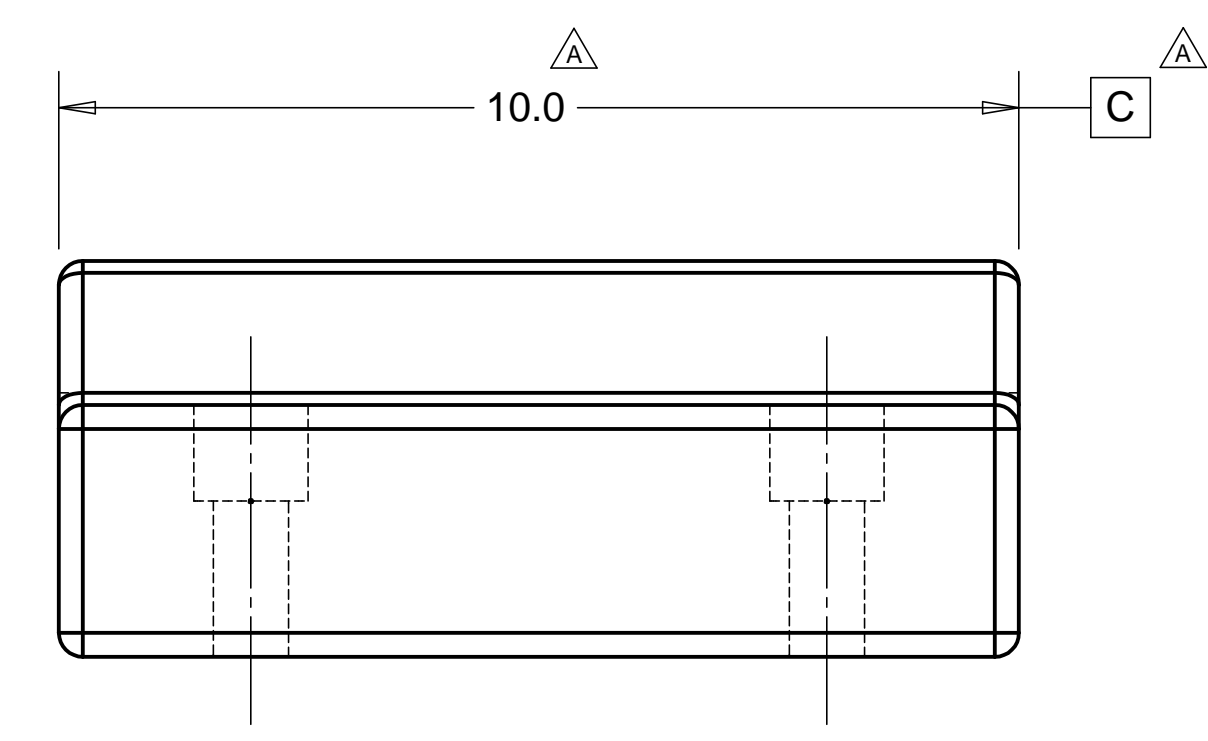
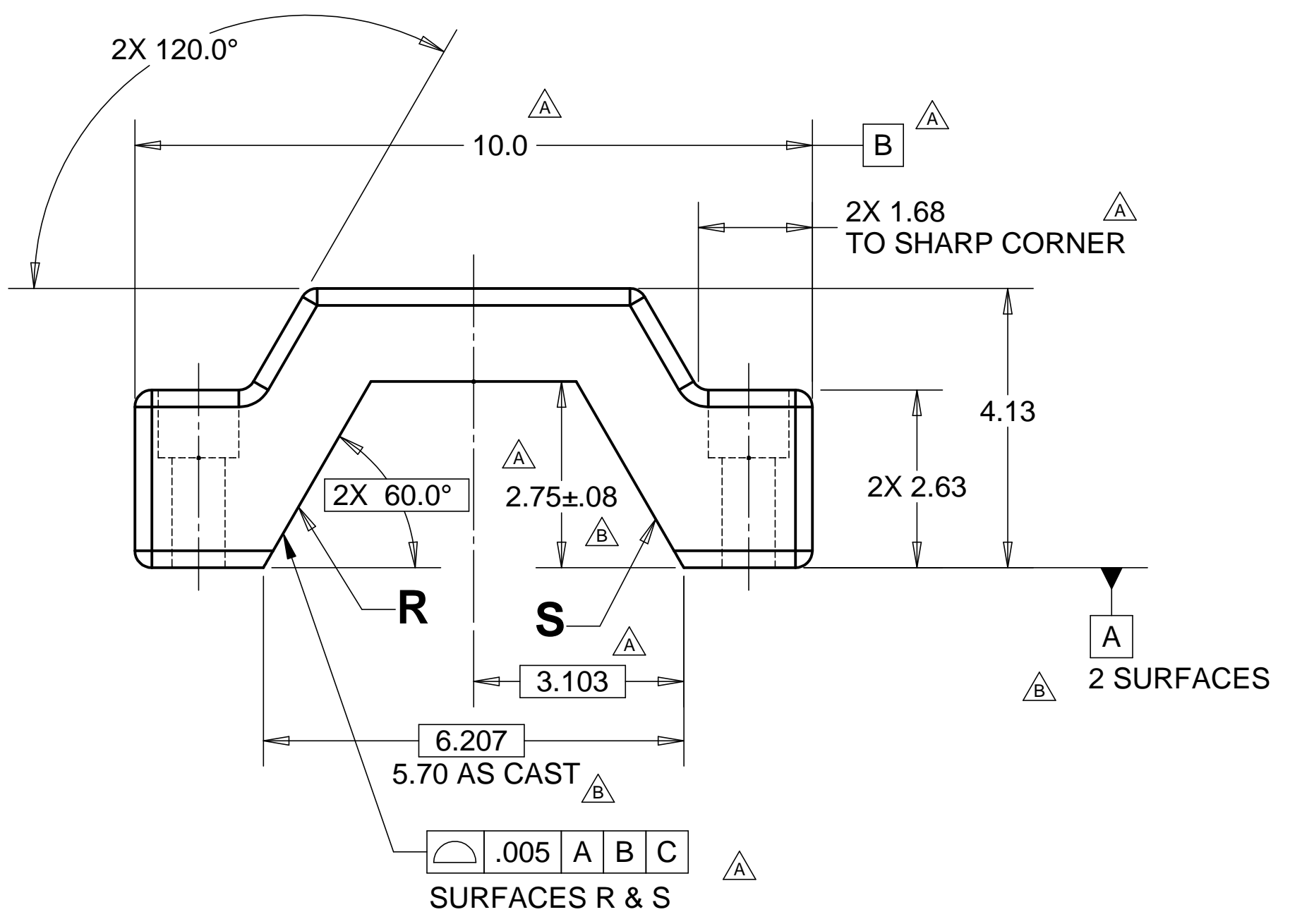
D

D



C

C



B

B

NOTES: UNLESS OTHERWISE SPECIFIED

- ALL DIMENSIONS IN INCHES
- DIMENSIONS AND TOLERANCING PER ASME Y14.5M-1994
- SURFACE TEXTURE PER ANSI/ASME B 46.1-1985
- REMOVE ALL BURRS AND BREAK SHARP EDGES TO A MAXIMUM OF .015
- ALL INSIDE CORNERS TO BE .015 RADIUS MAX
- COUNTERSINK 82 DEGREES ALL TAPPED HOLES TO MAJOR DIAMETER
- COUNTERSINK 82 DEGREES APPROXIMATELY .015 DEEP ALL DRILLED HOLES
- PARTS TO BE THOROUGHLY CLEANED TO REMOVE ALL OIL, GREASE, DIRT AND CHIPS
- PART NUMBER (DRAWING NO. PLUS DASH NO. PLUS SERIAL NO.) TO BE CLEARLY MARKED ON THE PART ITSELF.
- ALLOWABLE DRAFT ANGLE 2° MAX.

MATL: ALUM. A356-T6

△ WEIGHT: 20.7 lbs.

△ 11. DIMENSIONS FROM MAX. DRAFT MATERIAL

A

A

PARTS LIST			
UNLESS OTHERWISE SPECIFIED: DIMENSIONS ARE IN INCHES -TOLERANCES- DECIMALS ANGULAR = +/- .30° .X = +/- .1 .XX = +/- .03 .XXX = +/- .010 SURFACE FINISH = 250	CAD GENERATED DRAWING, DO NOT MANUALLY UPDATE DO NOT SCALE DRAWING		HYTEC, INC TITLE LIGO BSC SUPPORT TUBE MNT CAP
	FINISH PART NO. D972124-1	SIGNATURE DESIGNED ROGER L. SMITH DRAWN ROGER L. SMITH CHECKED HARRY SALAZAR ENGR. T. THOMPSON APPROVED T. THOMPSON	DATE 5-28-97 5-28-97 7-10-97 7-10-97

8 7 6 5 4 3 2 1