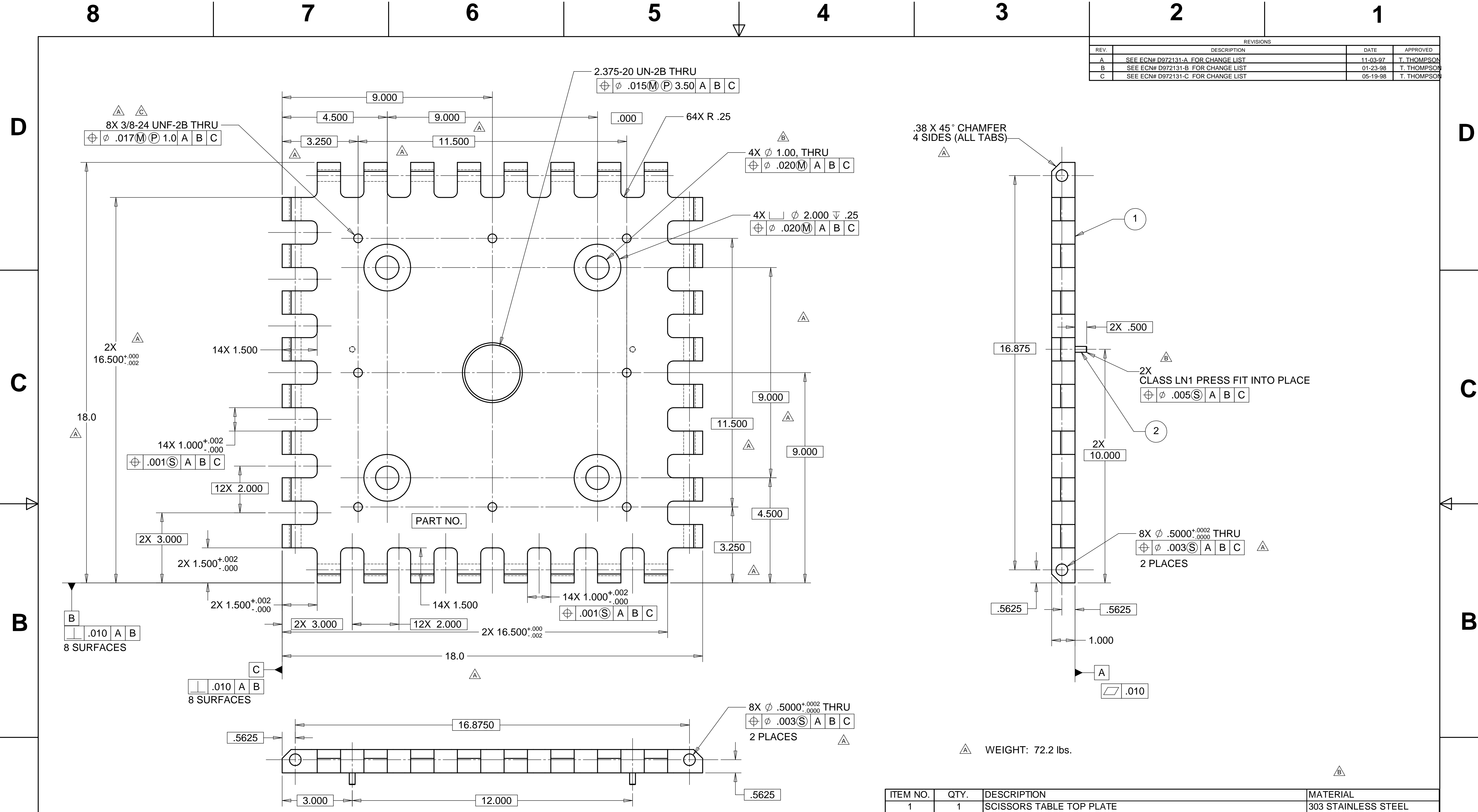


| REV. | DESCRIPTION | DATE | APPROVED |
|------|------------------------------------|----------|-------------|
| A | SEE ECN# D972131-A FOR CHANGE LIST | 11-03-97 | T. THOMPSON |
| B | SEE ECN# D972131-B FOR CHANGE LIST | 01-23-98 | T. THOMPSON |
| C | SEE ECN# D972131-C FOR CHANGE LIST | 05-19-98 | T. THOMPSON |



- NOTES: UNLESS OTHERWISE SPECIFIED
1. ALL DIMENSIONS IN INCHES
 2. DIMENSIONS AND TOLERANCING PER ASME Y14.5M-1994
 3. SURFACE TEXTURE PER ANSI/ASME B 46.1-1985
 4. REMOVE ALL BURRS AND BREAK SHARP EDGES TO A MAXIMUM OF .015
 5. ALL INSIDE CORNERS TO BE .015 RADIUS MAX
 6. COUNTERSINK 82 DEGREES ALL TAPPED HOLES TO MAJOR DIAMETER
 7. COUNTERSINK 82 DEGREES APPROXIMATELY .03/.06 DEEP ALL DRILLED HOLES
 8. PARTS TO BE THOROUGHLY CLEANED TO REMOVE ALL OIL, GREASE, DIRT AND CHIPS
 9. PART NUMBER (DRAWING NO. PLUS DASH NO. PLUS SERIAL NO.) TO BE CLEARLY MARKED ON THE PART.

| ITEM NO. | QTY. | DESCRIPTION | MATERIAL |
|----------|------|----------------------------------|---------------------|
| 1 | 1 | SCISSORS TABLE TOP PLATE | 303 STAINLESS STEEL |
| 2 | 2 | DOWEL PIN, 2500 DIAM. X 1.50 LG. | |

| PARTS LIST | | | |
|---|--|--|---------------------|
| UNLESS OTHERWISE SPECIFIED: DIMENSIONS ARE IN INCHES -TOLERANCES- | | CAD GENERATED DRAWING, DO NOT MANUALLY UPDATE DO NOT SCALE DRAWING | |
| DECIMALS .X = +/- .1 .XX = +/- .03 .XXX = +/- .010 | ANGULAR = +/- .30° SURFACE FINISH = 250 | TITLE HYTEC, INC LIGO SCISSOR TABLE TOP PLATE | |
| FINISH | SIGNATURE ROGER L. SMITH | DATE 5-28-97 | DWG. NO. D972131 |
| | DRAWN ROGER L. SMITH | 5-28-97 | SIZE D |
| | CHECKED HARRY SALAZAR | 8-5-97 | SHEET NO. 1 of 1 |
| | ENGR. T. THOMPSON | 8-6-97 | |
| | APPROVED T. THOMPSON | 8-6-97 | SCALE 1/2 |
| PART NO. D972131-1 | | | REVISION C |