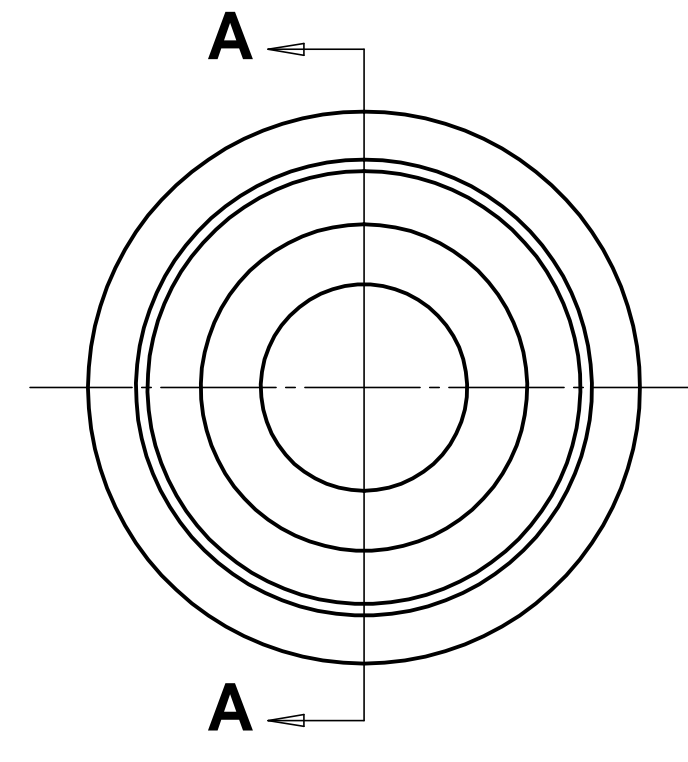
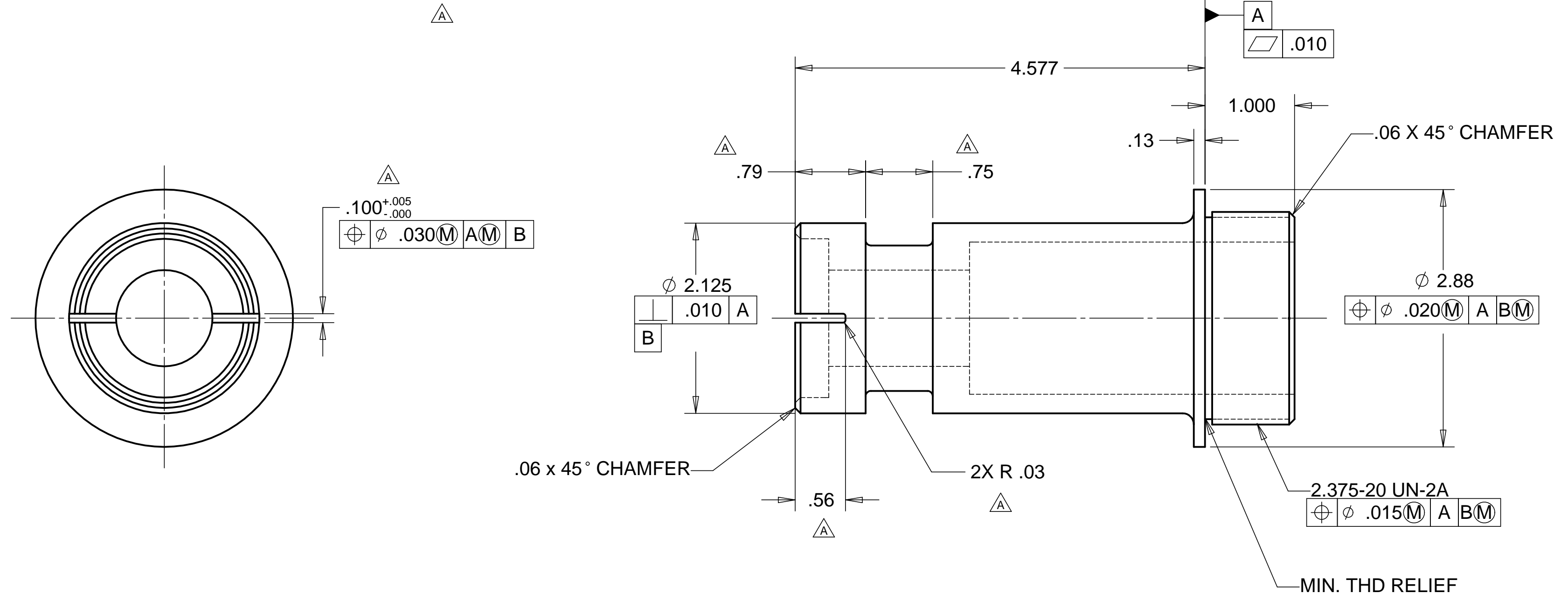
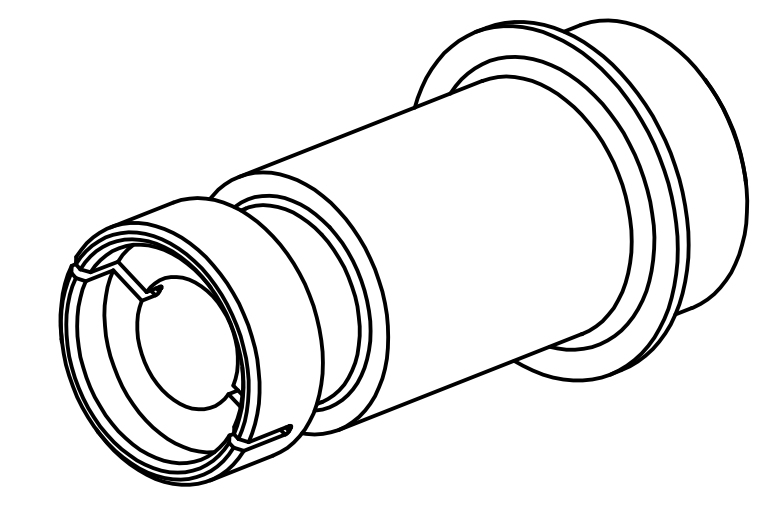
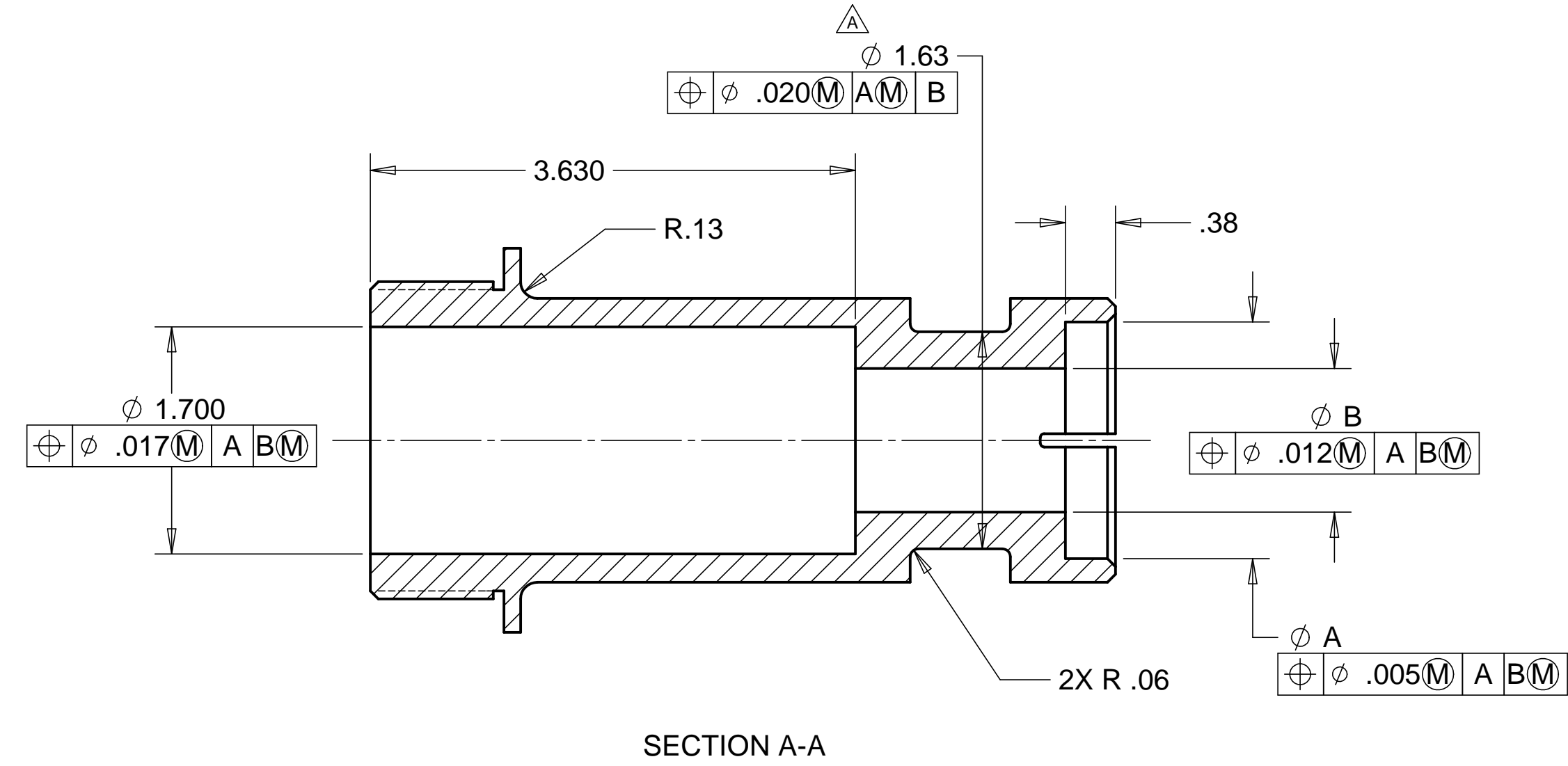


8 7 6 5 4 3 2 1

REVISIONS			
REV.	DESCRIPTION	DATE	APPROVED
A	SEE ECN# D972136-A FOR CHANGE LIST	05-14-98	T. THOMPSON



MATL: 303 STAINLESS

PART NO.	DESCRIPTION	"A"	"B"
D972136-1	BSC - SCISSOR TABLE Z SHAFT MOUNT	1.773	1.075
D972136-3	HAM - SCISSOR TABLE Z SHAFT MOUNT	1.185	0.800

NOTES: UNLESS OTHERWISE SPECIFIED

- ALL DIMENSIONS IN INCHES
- DIMENSIONS AND TOLERANCING PER ASME Y14.5M-1994
- SURFACE TEXTURE PER ANSI/ASME B 46.1-1985
- REMOVE ALL BURRS AND BREAK SHARP EDGES TO A MAXIMUM OF .015
- ALL INSIDE CORNERS TO BE .015 RADIUS MAX
- COUNTERSINK 82 DEGREES ALL TAPPED HOLES TO MAJOR DIAMETER
- COUNTERSINK 82 DEGREES APPROXIMATELY .03/.06 DEEP ALL DRILLED HOLES
- PARTS TO BE THOROUGHLY CLEANED TO REMOVE ALL OIL, GREASE, DIRT AND CHIPS
- PART NUMBER (DRAWING NO. PLUS DASH NO. PLUS SERIAL NO.) TO BE CLEARLY MARKED ON THE PART.

PARTS LIST				
UNLESS OTHERWISE SPECIFIED: DIMENSIONS ARE IN INCHES -TOLERANCES-  DECIMALS                  ANGULAR = +/- .30' .XX = +/- .03                  SURFACE FINISH = 250 .XXX = +/- .010	CAD GENERATED DRAWING, DO NOT MANUALLY UPDATE DO NOT SCALE DRAWING		<b>HYTEC, INC</b>  TITLE <b>LIGO SCISSOR TABLE Z SHAFT MOUNT</b>  DWG. NO.                  SIZE                  SHEET NO. <b>D972136                  D                  1 of 1</b>  SCALE 1/1                  REVISION A	
	FINISH	SIGNATURE		DATE
	DESIGNED	ROGER L. SMITH		5-28-97
	DRAWN	ROGER L. SMITH		5-28-97
	CHECKED	HARRY SALAZAR		8-5-97
ENGR.	T. THOMPSON	8-6-97		
APPROVED	T. THOMPSON	8-6-97		
PART NO. <b>D972136</b>				

8 7 6 5 4 3 2 1