

8 7 6 5 4 3 2 1

REVISIONS			
REV.	DESCRIPTION	DATE	APPROVED
A	SEE ECN# D972137-A FOR CHANGE LIST	05-13-98	T. THOMPSON

D

D

C

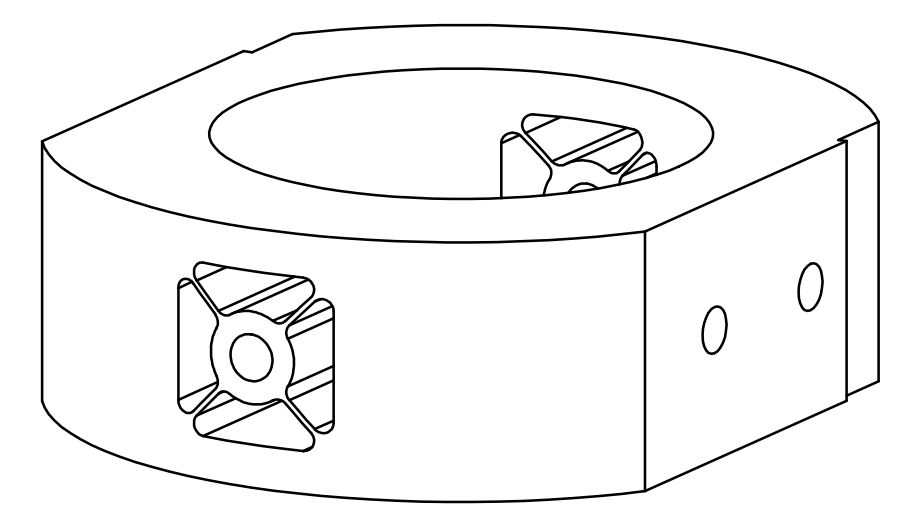
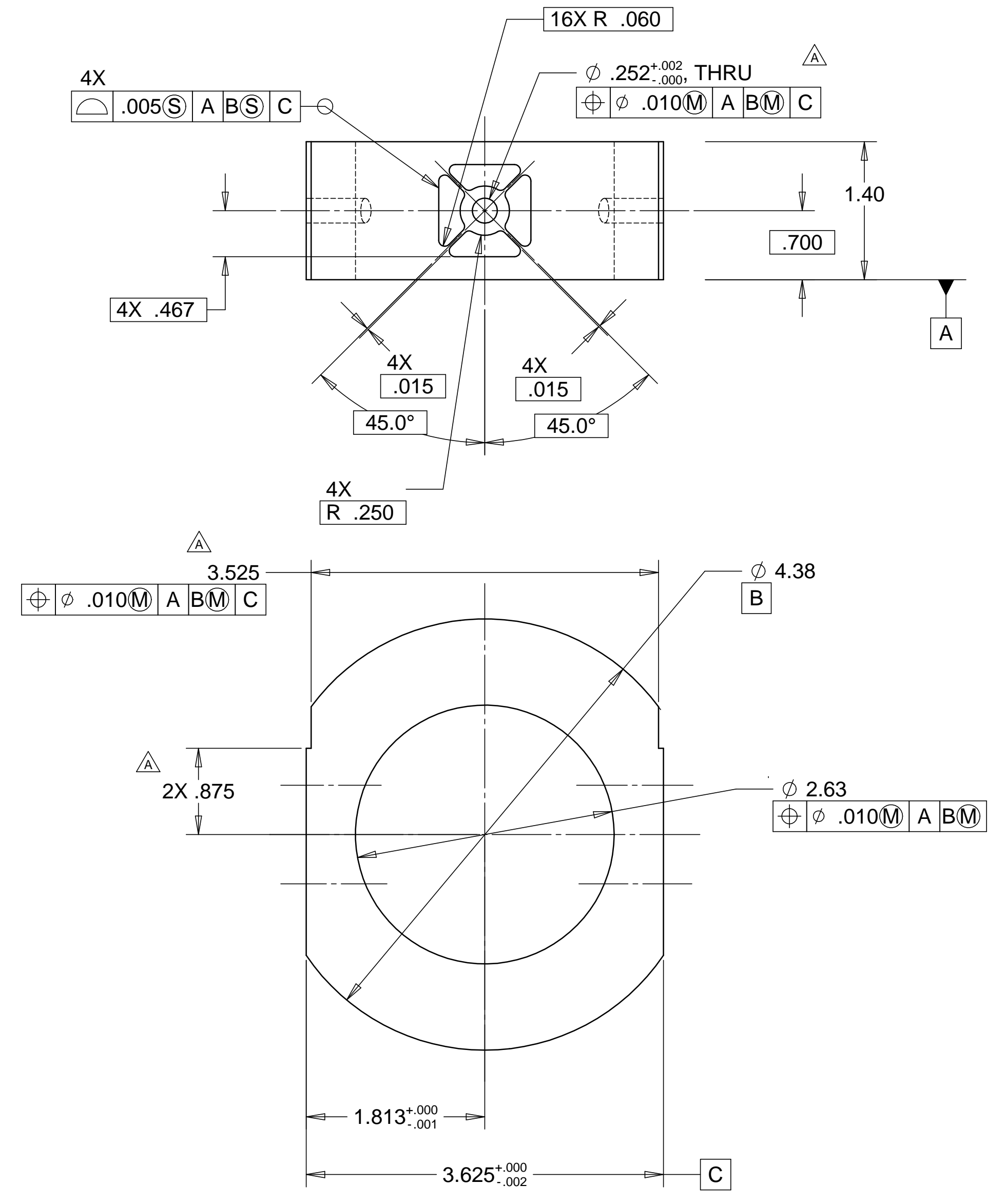
C

B

B

A

A



MATL: 17-4 PH STAINLESS STEEL
HIGH YIELD STRENGTH (170 KSI)
CONDITION - H900
WEIGHT 3.0 lbs.

NOTES: UNLESS OTHER WISE SPECIFIED

- ALL DIMENSIONS IN INCHES
- DIMENSIONS AND TOLERANCING PER ANAS1 Y14.5M-1994
- SURFACE TEXTURE PER ANI/ASME B 46.1-1985
- REMOVE ALL BURRS AND BREAK SHARP EDGES TO A MAXIMUM OF .015
- ALL INSIDE CORNERS TO BE .015 RADIUS MAX
- COUNTERSINK 82 DEGREES ALL TAPPED HOLES TO MAJOR DIAMETER
- COUNTERSINK 82 DEGREES APPROXIMATELY .03/.06 DEEP ALL DRILLED HOLES
- PARTS TO BE THOROUGHLY CLEANED TO REMOVE ALL OIL, GREASE, DIRT AND CHIPS
- PART NUMBER (DRAWING NO. PLUS DASH NO. PLUS SERIAL NO.) TO BE CLEARLY MARKED ON THE PART ITSELF.

PARTS LIST			
UNLESS OTHERWISE SPECIFIED: DIMENSIONS ARE IN INCHES -TOLERANCES-	CAD GENERATED DRAWING, DO NOT MANUALLY UPDATE DO NOT SCALE DRAWING		HYTEC, INC TITLE LIGO COARSE X-Y TRANSLATION ROLL PIVOT
	DECIMALS .X = +/- .1 .XX = +/- .03 .XXX = +/- .010	ANGULAR = +/- 30' SURFACE FINISH = 250	
FINISH	SIGNATURE	DATE	SCALE 1/1
PART NO. D972137-1	DESIGNED	ROGER L. SMITH	11-17-97
	DRAWN	ROGER L. SMITH	11-17-97
	CHECKED	HARRY SALAZAR	11-24-97
	ENGR.	ERIK SWENSEN	11-17-97
	APPROVED	T. THOMPSON	11-17-97
			REVISION

8 7 6 5 4 3 2 1