

8

7

6

5

4

3

2

1

REVISIONS			
REV.	DESCRIPTION	DATE	APPROVED

D

D

C

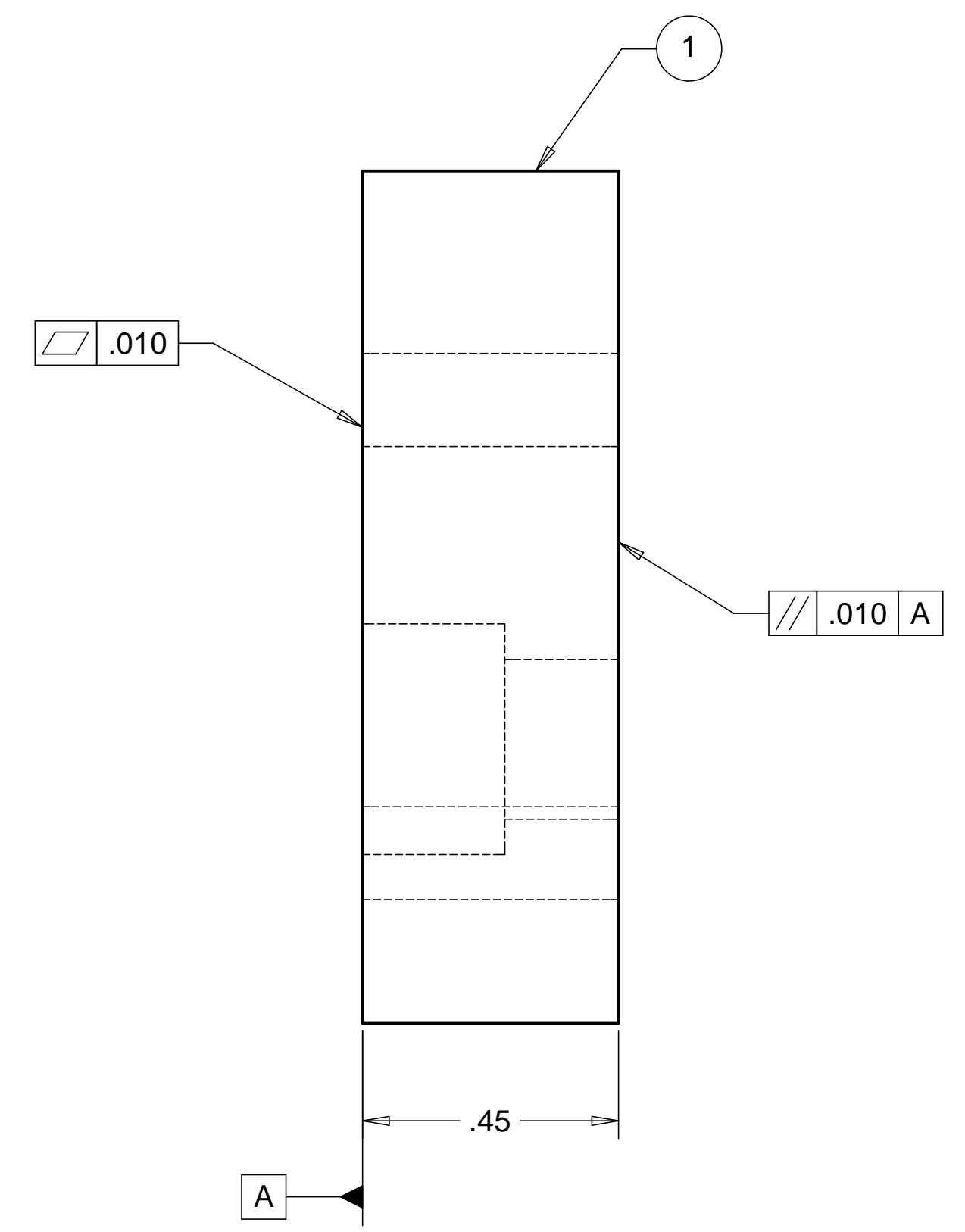
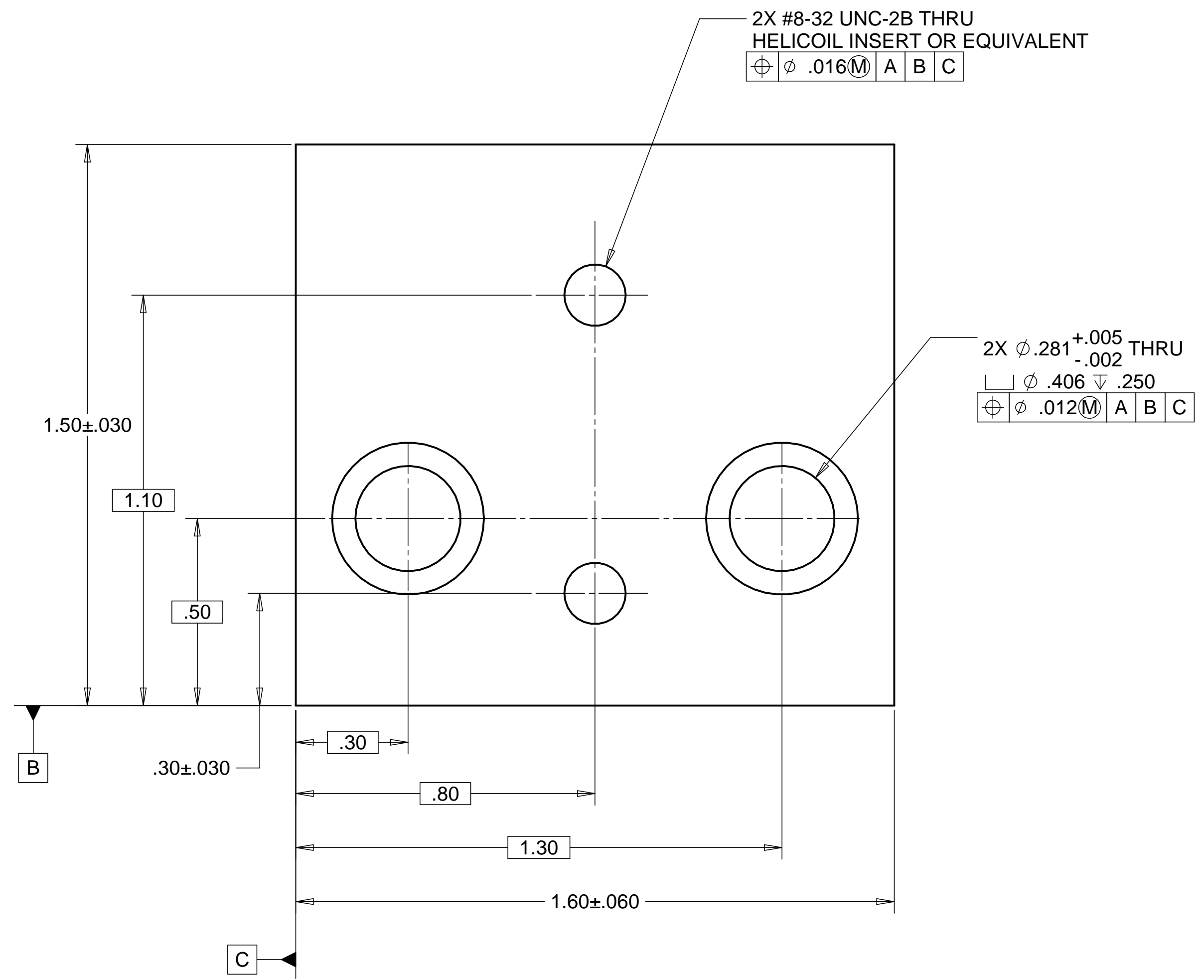
C

B

B

A

A



NOTES: UNLESS OTHERWISE SPECIFIED

1. ALL DIMENSIONS IN INCHES
2. DIMENSIONS AND TOLERANCING PER ANASI Y14.5M-1994
3. SURFACE TEXTURE PER ANI/ASME B 46.1-1985
4. REMOVE ALL BURRS AND BREAK SHARP EDGES TO A MAXIMUM OF .015
5. ALL INSIDE CORNERS TO BE .015 RADIUS MAX
6. COUNTERSINK 82 DEGREES ALL TAPPED HOLES TO MAJOR DIAMETER
7. COUNTERSINK 82 DEGREES APPROXIMATELY .03/.06 DEEP ALL DRILLED HOLES
8. PARTS TO BE THOROUGHLY CLEANED TO REMOVE ALL OIL, GREASE, DIRT AND CHIPS
9. PART NUMBER (DRAWING NO., DASH NO., REVISION NO., SERIAL NO.) TO BE CLEARLY MARKED ON THE PART ITSELF.

ITEM	QTY	PART NUMBER	DESCRIPTION	MATERIAL
1	4	D972151-1	PNEUMATIC MOUNTING BLOCK	ALUMINUM 6061 T6
PARTS LIST				
UNLESS OTHERWISE SPECIFIED: DIMENSIONS ARE IN INCHES TOLERANCES: DECIMALS      ANGULAR = +/- .30' .X = +/- .03 .XX = +/- .010 .XXX = +/- .005      SURFACE FINISH = 250			CAD GENERATED DRAWING, DO NOT MANUALLY UPDATE DO NOT SCALE DRAWING	
FINISH		SIGNATURE		DATE
		DESIGNED E. SWENSEN		9/01/98
		DRAWN E. ROMERO		9/01/98
		CHECKED E. SWENSEN		09/01/98
		ENGR. E. SWENSEN		9/01/98
		APPROVED E. SWENSEN		09/01/98
PART NO. D972151 -1			DWG. NO. D972151	SIZE SHEET NO. D 1 of 1
			SCALE 4/1	REVISION

8

7

6

5

4

3

2

1