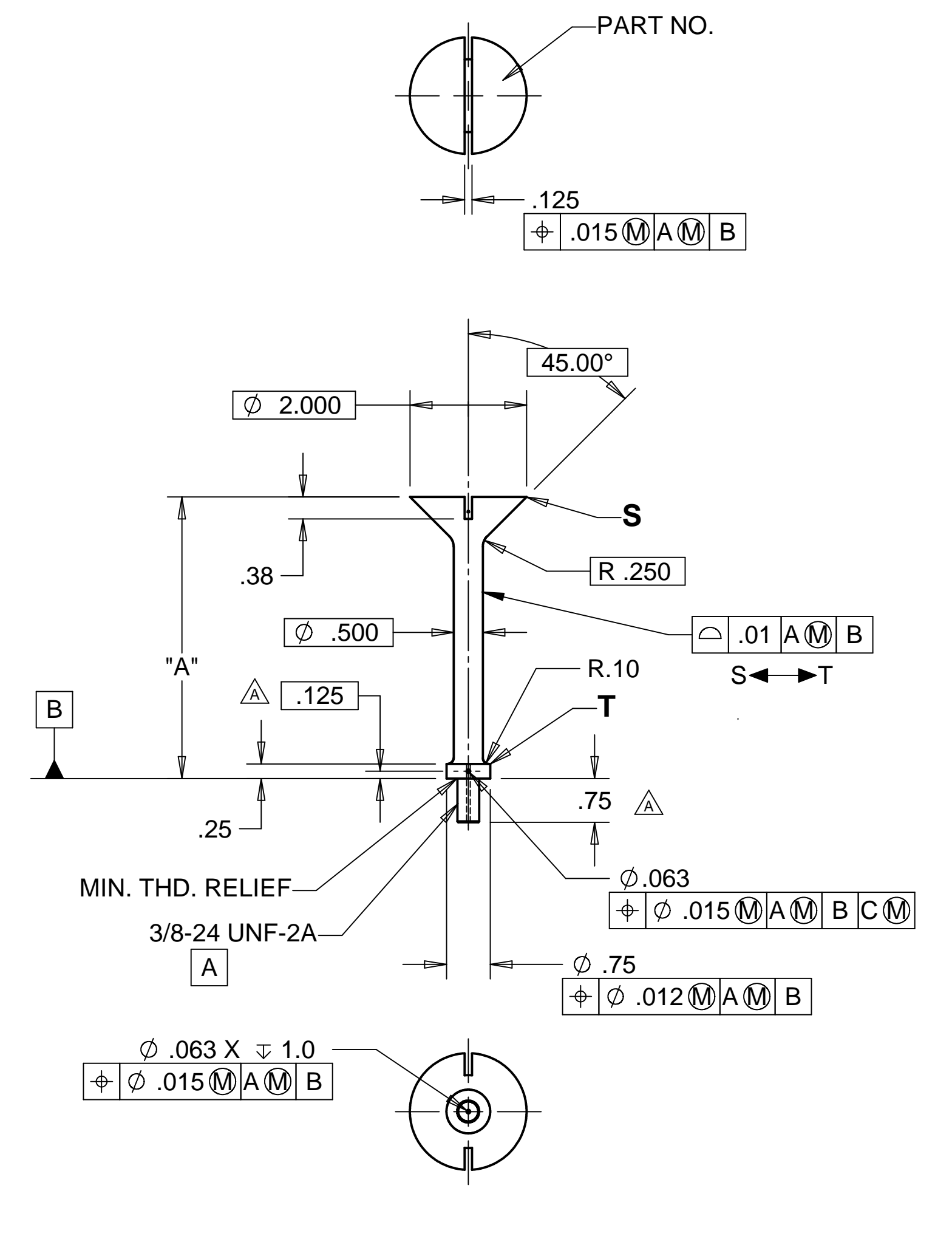
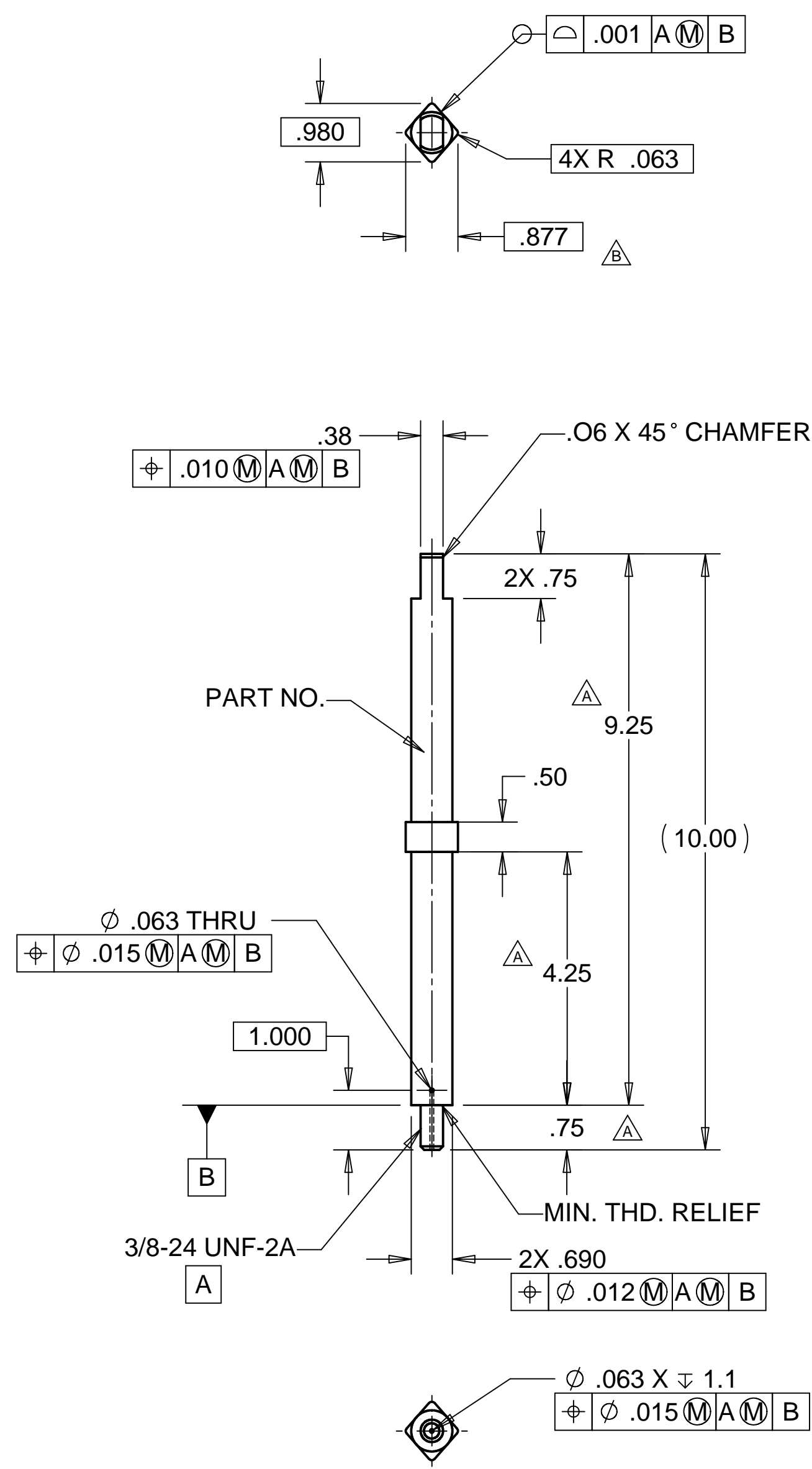
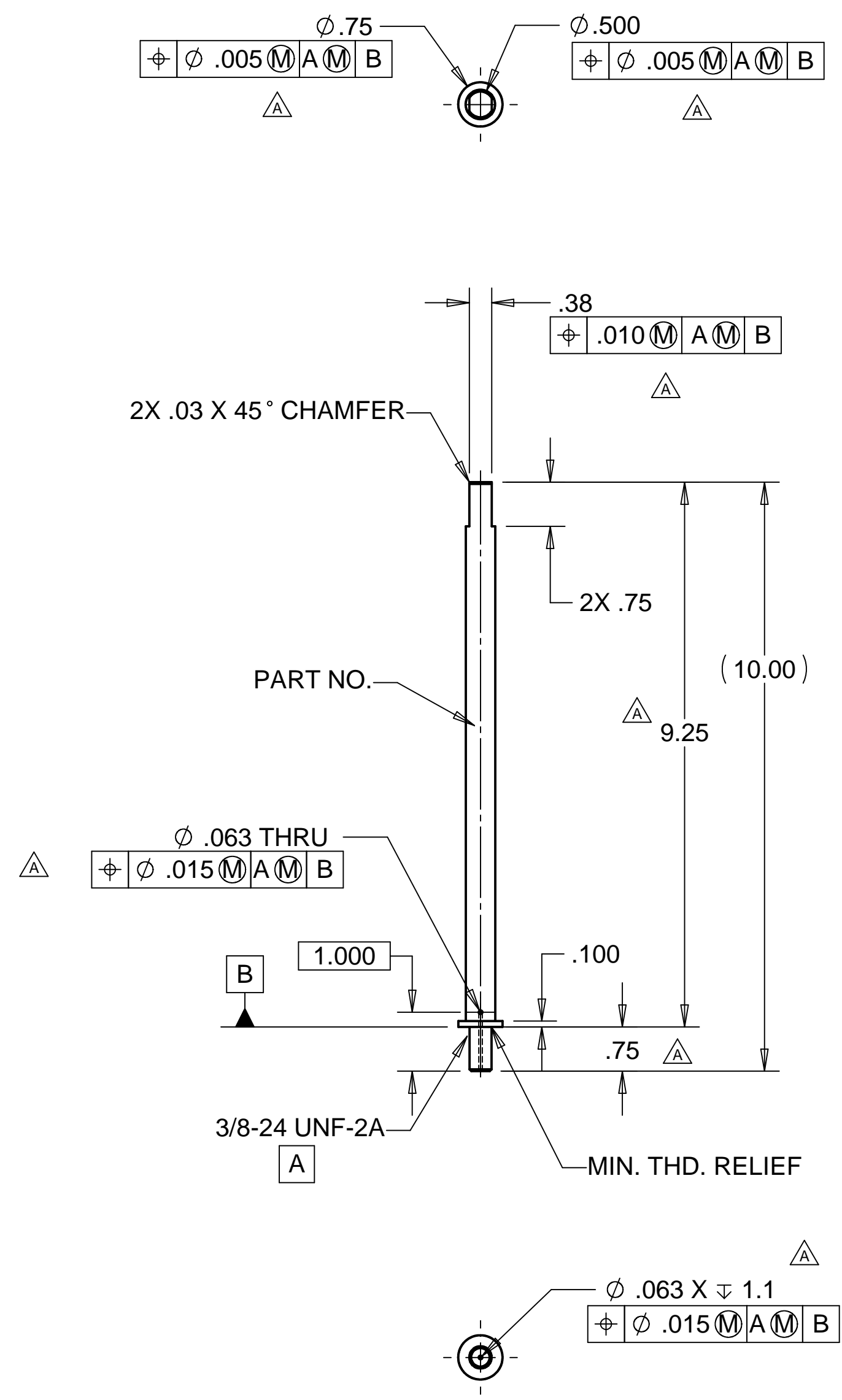


REVISIONS			
REV.	DESCRIPTION	DATE	APPROVED
A	SEE ECN# D972217-A FOR CHANGE LIST	11-03-97	T. THOMPSON
B	SEE ECN# D972217-B FOR CHANGE LIST	02-02-98	T. THOMPSON



PART NO.	DESCRIPTION	"A"	WEIGHT
D972217-1	BSC LEG SCREW 1	7.135	0.68 lbs.
D972217-3	BSC LEG SCREW 2	5.735	0.60 lbs.
D972217-5	BSC LEG SCREW 3	4.828	0.55 lbs.

NOTES: UNLESS OTHERWISE SPECIFIED

- ALL DIMENSIONS IN INCHES
- DIMENSIONS AND TOLERANCING PER ASME Y14.5M-1994
- SURFACE TEXTURE PER ANSI/ASME B 46.1-1985
- REMOVE ALL BURRS AND BREAK SHARP EDGES TO A MAXIMUM OF .015
- ALL INSIDE CORNERS TO BE .015 RADIUS MAX
- COUNTERSINK 82 DEGREES ALL TAPPED HOLES TO MAJOR DIAMETER
- COUNTERSINK 82 DEGREES APPROXIMATELY .015 DEEP ALL DRILLED HOLES
- PARTS TO BE THOROUGHLY CLEANED TO REMOVE ALL OIL, GREASE, DIRT AND CHIPS
- PART NUMBER (DRAWING NO. PLUS DASH NO.) TO BE CLEARLY MARKED EITHER ON THE PART ITSELF, OR ON A TAG ATTACHED TO THE PART OR PACKAGE
- ALL FABRICATION, CLEANING, AND HANDLING MAINTAINED TO HYTEC SPECIFICATION: LIGO-TS-03 CATEGORY 1.
- NO SULFUR BASED CUTTING FLUIDS ALLOWED. APPROVED STAINLESS STEEL MACHINE LUBRICANT: RELTON A-9, RELTON

PARTS LIST			
UNLESS OTHERWISE SPECIFIED: DIMENSIONS ARE IN INCHES -TOLERANCES-	CAD GENERATED DRAWING. DO NOT MANUALLY UPDATE DO NOT SCALE DRAWING		HYTEC, INC TITLE LIGO BSC ISOLATION STACK LEG LOCATION & ASSEMBLY PINS DWG. NO. D972217 SIZE D SHEET NO. 1 of 1
	DECIMALS X = +/- .1 .XX = +/- .03 .XXX = +/- .010	ANGULAR = +/- .30' SURFACE FINISH = 250	
SIGNATURE		DATE	REVISION B
DESIGNED ROGER L. SMITH		5-28-97	
DRAWN ROGER L. SMITH		5-28-97	
CHECKED HARRY SALAZAR		6-6-97	
ENGR. T. THOMPSON		7-10-97	
APPROVED T. THOMPSON		7-10-97	