

8

7

6

5

4

3

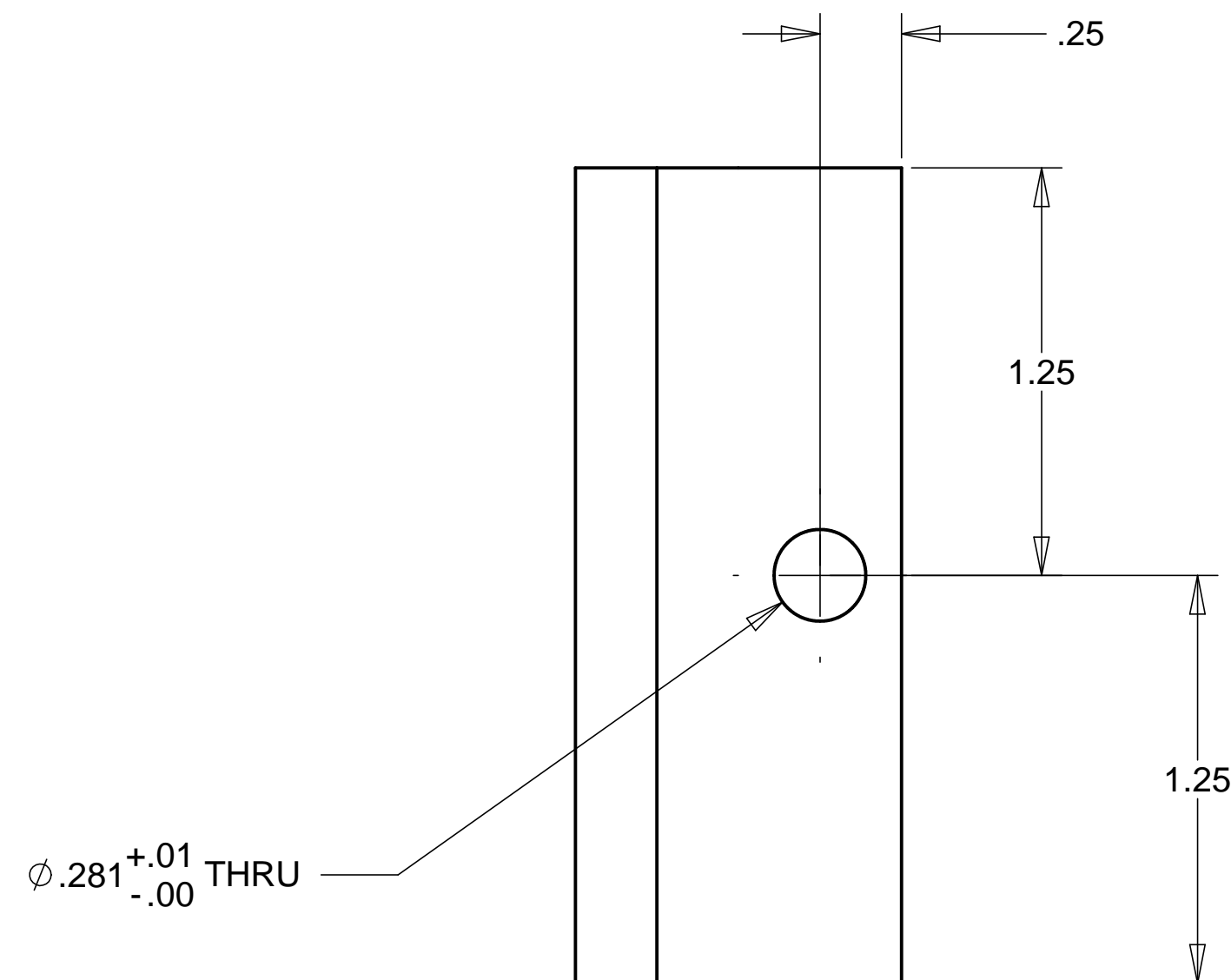
2

1

REVISIONS		DATE	APPROVED
REV	DESCRIPTION		

D

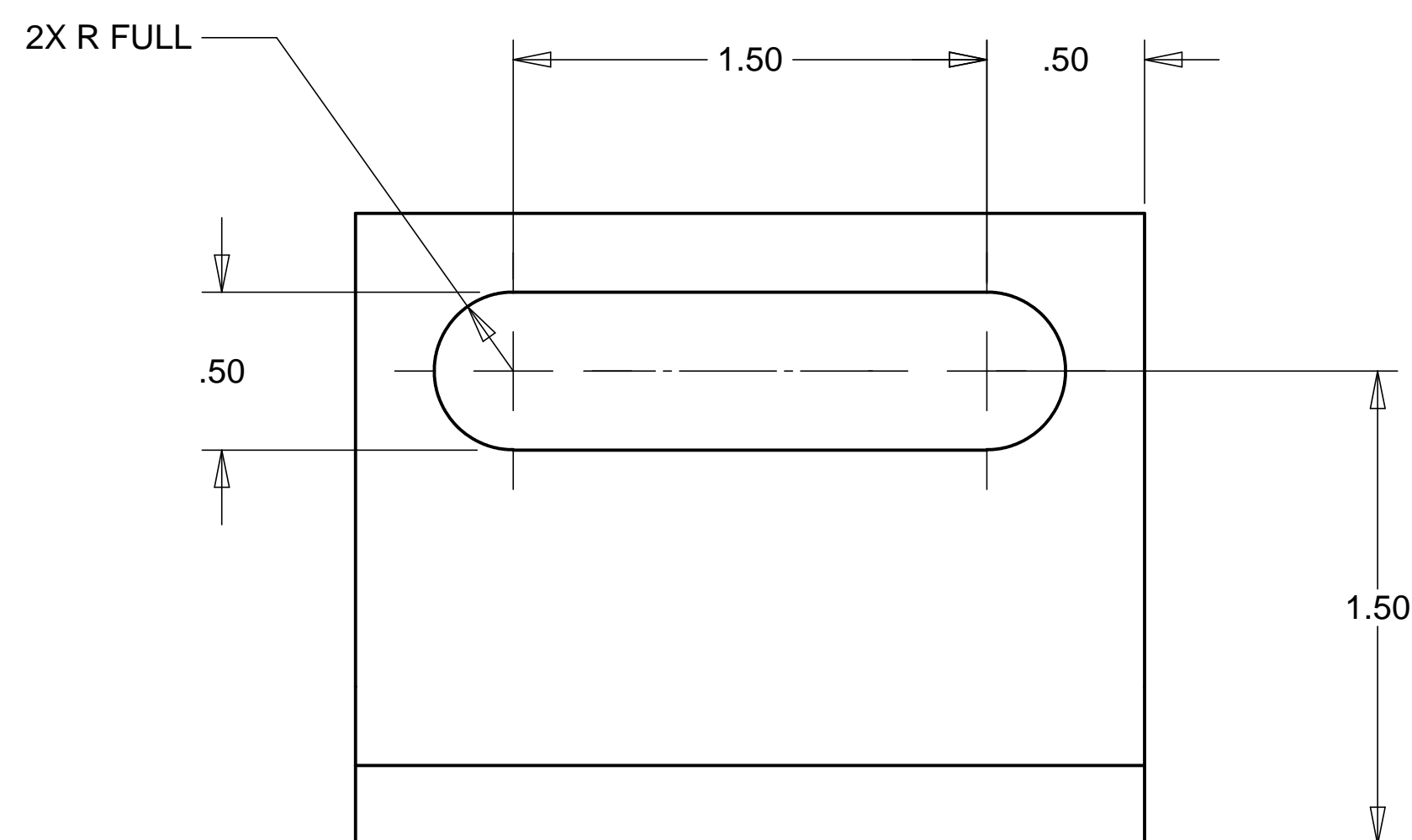
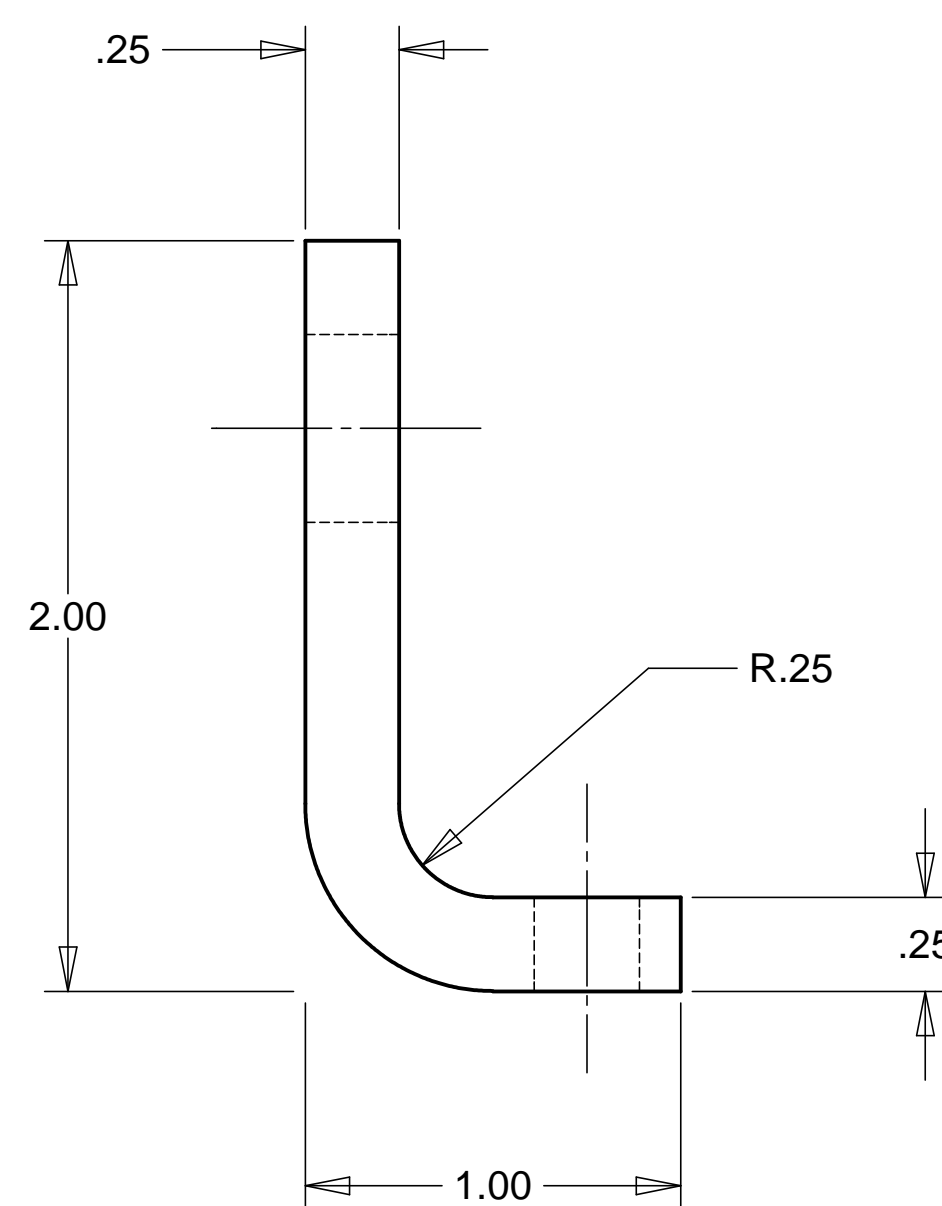
D



MATERIAL: STAINLESS STEEL

C

C



B

B

A

A

NOTES: UNLESS OTHERWISE SPECIFIED

- ALL DIMENSIONS IN INCHES
- DIMENSIONS AND TOLERANCING PER ANASI Y14.5M-1994
- SURFACE TEXTURE PER ANI/ASME B 46.1-1985
- REMOVE ALL BURRS AND BREAK SHARP EDGES TO A MAXIMUM OF .015
- ALL INSIDE CORNERS TO BE .015 RADIUS MAX
- COUNTERSINK 82 DEGREES ALL TAPPED HOLES TO MAJOR DIAMETER
- COUNTERSINK 82 DEGREES APPROXIMATELY .03/.06 DEEP ALL DRILLED HOLES
- PARTS TO BE THOROUGHLY CLEANED TO REMOVE ALL OIL, GREASE, DIRT AND CHIPS
- PART NUMBER (DRAWING NO., DASH NO., REVISION NO., SERIAL NO.) TO BE CLEARLY MARKED ON THE PART ITSELF.

ITEM NO.	QTY.	PART NO.	DESCRIPTION
PARTS LIST			
UNLESS OTHERWISE SPECIFIED: DIMENSIONS ARE IN INCHES -TOLERANCES-		CAD GENERATED DRAWING, DO NOT MANUALLY UPDATE DO NOT SCALE DRAWING	
DECIMALS ANGULAR = +/- .30° -X = +/- .1 -XX = +/- .03 -XXX = +/- .010 SURFACE FINISH = 250		HYTEC, INC	
FINISH		SIGNATURE	DATE
		DESIGNED H. SALAZAR	1-10-99
		DRAWN H. SALAZAR	1-10-99
PART NO. D972308-1		CHECKED E. SWENSEN	04-22-99
		ENGR. E. SWENSEN	04-22-99
		APPROVED T. THOMPSON	04-22-99
		SCALE 1/2	REVISION
		TITLE LIGO LIFTING BLOCK DETAIL 3	
		DWG. NO. D972308	SIZE SHEET NO. D 1 of 1

8

7

6

5

4

3

2

1