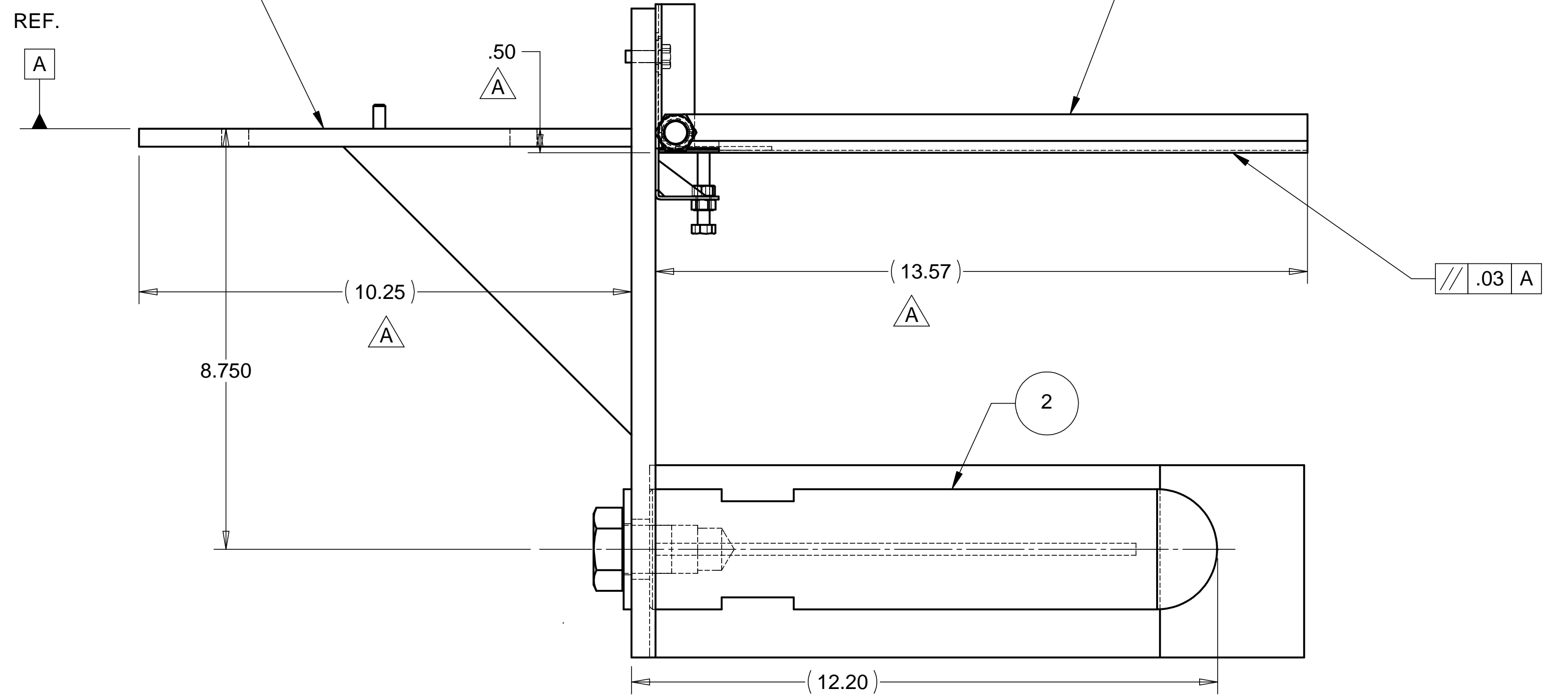
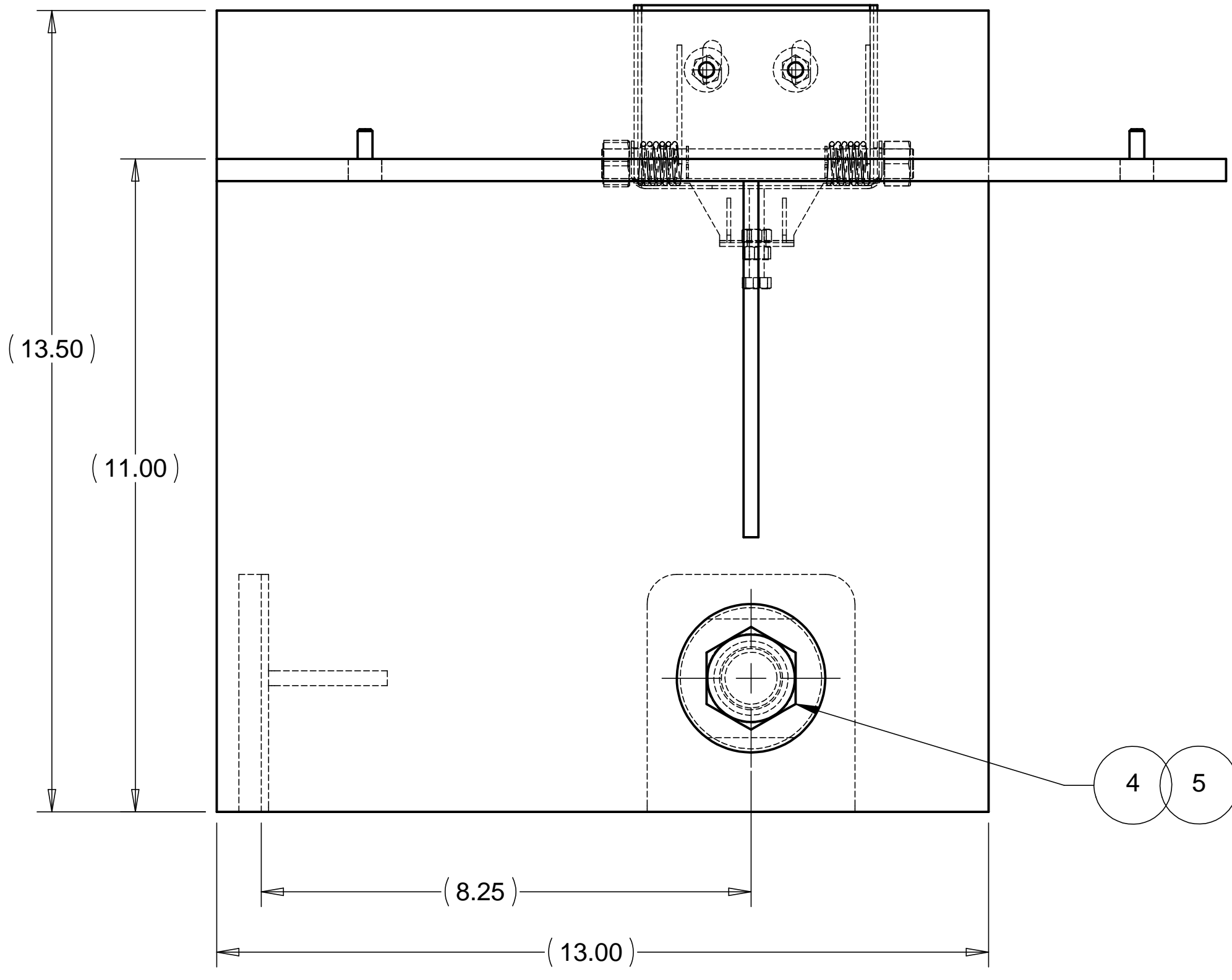
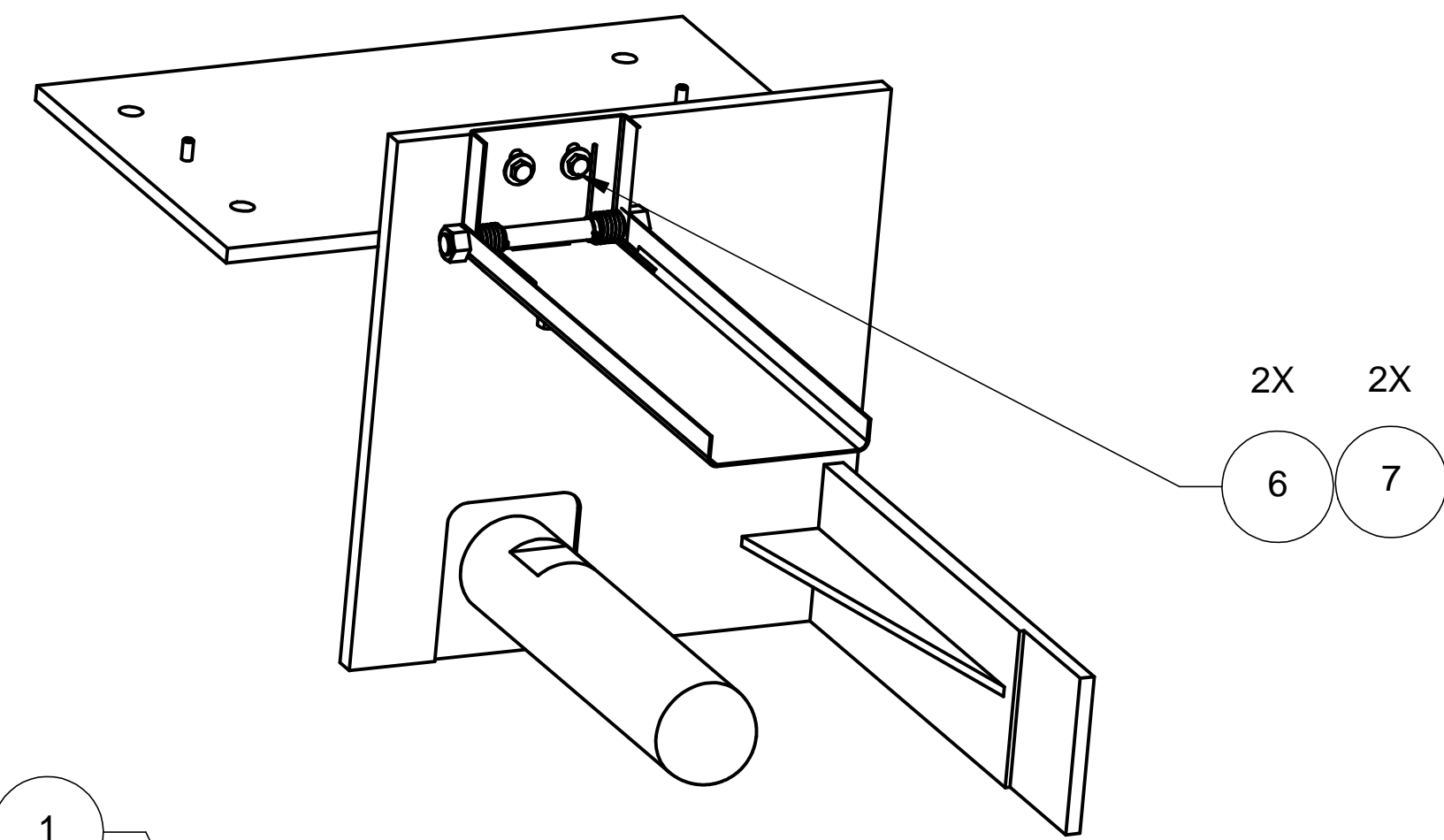


8 7 6 5 4 3 2 1

REVISIONS		DATE	APPROVED
REV. A	SEE ECN FOR CHANGES	3-20-98	WKM



WEIGHT: 70.7 lbs

ITEM NO.	QTY.	PART NO.	DESCRIPTION
1	1	D972422-1	BSC CENTERING JIG LEFT SIDE WELDMENT
2	1	D972421-1	BSC CENTERING JIG POINT CONTACT
3	1	D972377-2	BSC PIER LIFTING JIG ELEVATION STAGE SUB-ASSEMBLY
4	1		BOLT, 1-8 UNC-2A X 1.25 LG., STAINLESS STEEL
5	1		WASHER, REGULAR 1.00 DIA., STAINLESS STEEL
6	2		SCREW, .250-20 UNC-2A X .50 LG., STAINLESS STEEL
7	2		WASHER, REGULAR .250 DIA., STAINLESS STEEL

PARTS LIST			
UNLESS OTHERWISE SPECIFIED: DIMENSIONS ARE IN INCHES -TOLERANCES-		CAD GENERATED DRAWING, DO NOT MANUALLY UPDATE DO NOT SCALE DRAWING	
DECIMALS .X = +/- .1 .XX = +/- .03 .XXX = +/- .010	ANGULAR = +/- .30° SURFACE FINISH = 250	<p>HYTEC, INC</p> <p>TITLE: BSC CENTERING JIG LEFT SIDE ASSEMBLY</p>	
FINISH		SIGNATURE	DATE
		W. K. MILLER	1-14-98
		GERALD BUSTOS	1-14-98
		HARRY SALAZAR	3-14-98
		T. THOMPSON	3-14-98
		T. THOMPSON	3-14-98
PART NO. D972380-1		DWG. NO. D972380	SCALE 1/2
		SIZE D	SHEET NO. 1 of 1
		REVISION A	

8 7 6 5 4 3 2 1