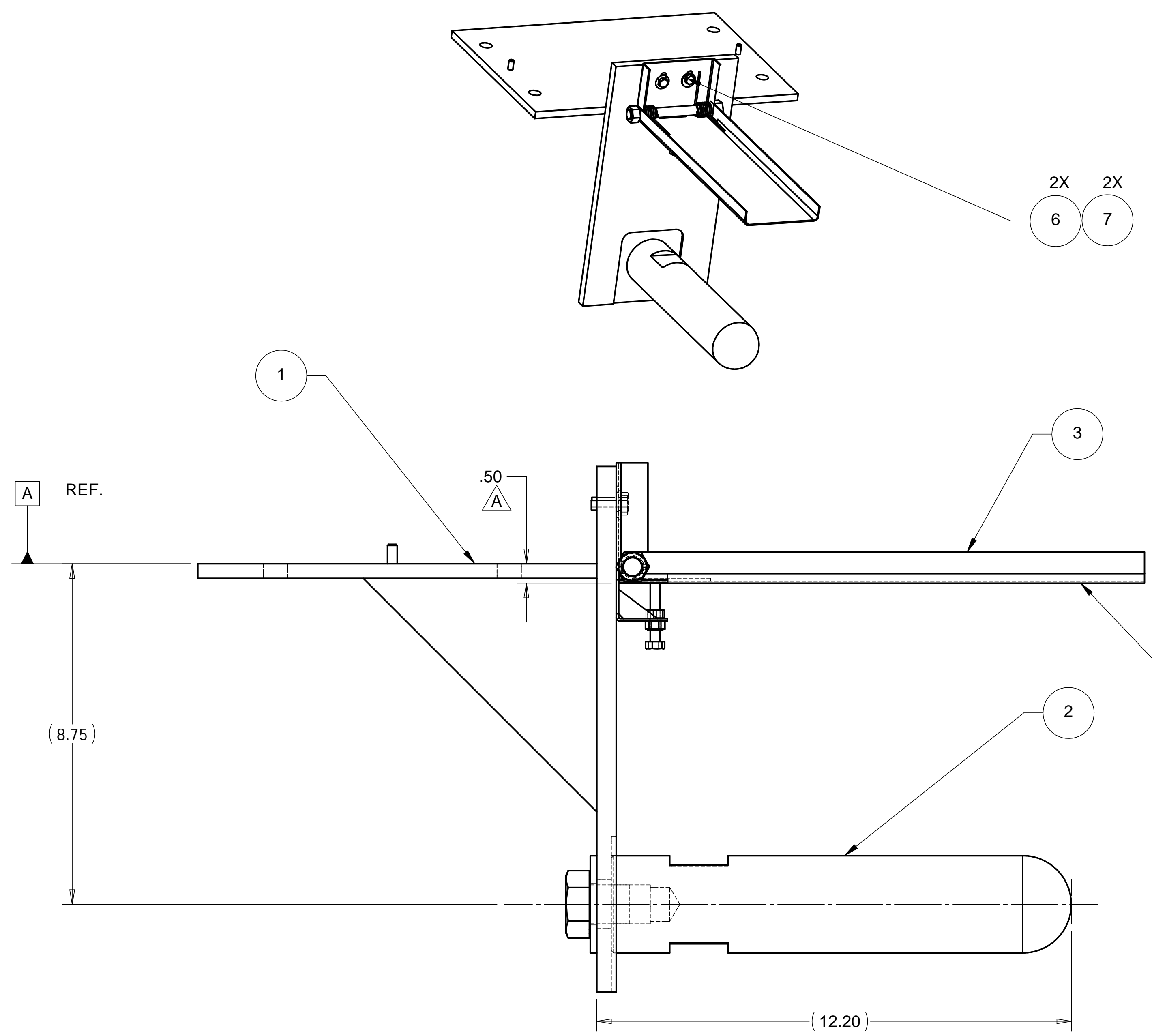
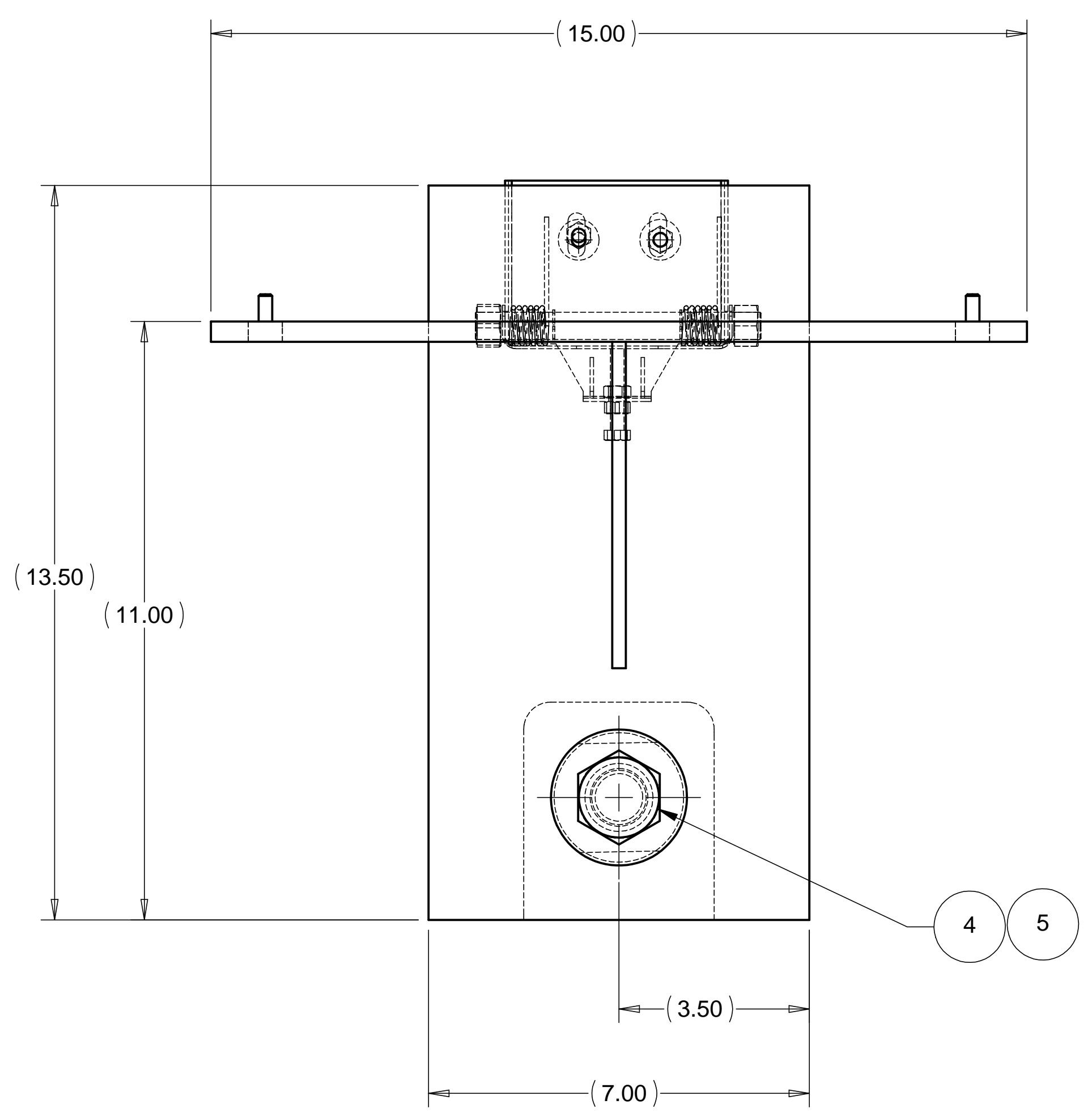


8 7 6 5 4 3 2 1

REV.	DESCRIPTION	DATE	APPROVED
A	REPLACED D972382-1 WITH D972377-2	3-20-98	WKM

D  
C  
B  
A

D  
C  
B  
A



WEIGHT: 48.2 lbs

ITEM NO.	QTY.	PART NO.	DESCRIPTION
1	1	D972423-1	BSC CENTERING JIG RIGHT SIDE WELDMENT
2	1	D972421-1	BSC CENTERING JIG POINT CONTACT
3	1	D972377-2	BSC PIER LIFTING JIG ELEVATION STAGE SUB-ASSEMBLY
4	1		BOLT, 1-8 UNC-2A X 1.25 LG., STAINLESS STEEL
5	1		WASHER, REGULAR 1.00 DIA., STAINLESS STEEL
6	2		SCREW, .250-20 UNC-2A X .50 LG., STAINLESS STEEL
7	2		WASHER, REGULAR .25 DIA., STAINLESS STEEL

PARTS LIST				HYTEC, INC	
UNLESS OTHERWISE SPECIFIED: DIMENSIONS ARE IN INCHES -TOLERANCES-		CAD GENERATED DRAWING, DO NOT MANUALLY UPDATE DO NOT SCALE DRAWING		TITLE <b>BSC CENTERING JIG RIGHT SIDE ASSEMBLY</b>	
DECIMALS .X = +/- .1 .XX = +/- .03 .XXX = +/- .010	ANGULAR = +/- .30° SURFACE FINISH = 250	FINISH	SIGNATURE	DATE	DWG. NO.
			W. K. MILLER	1-14-98	D972381
			GERALD BUSTOS	1-14-98	SIZE
			HARRY SALAZAR	3-14-98	SHEET NO.
			T. THOMPSON	3-14-98	D 1 of 1
			T. THOMPSON	3-14-98	REVISION A
PART NO. <b>D972381-1</b>					SCALE 1/2

8 7 6 5 4 3 2 1