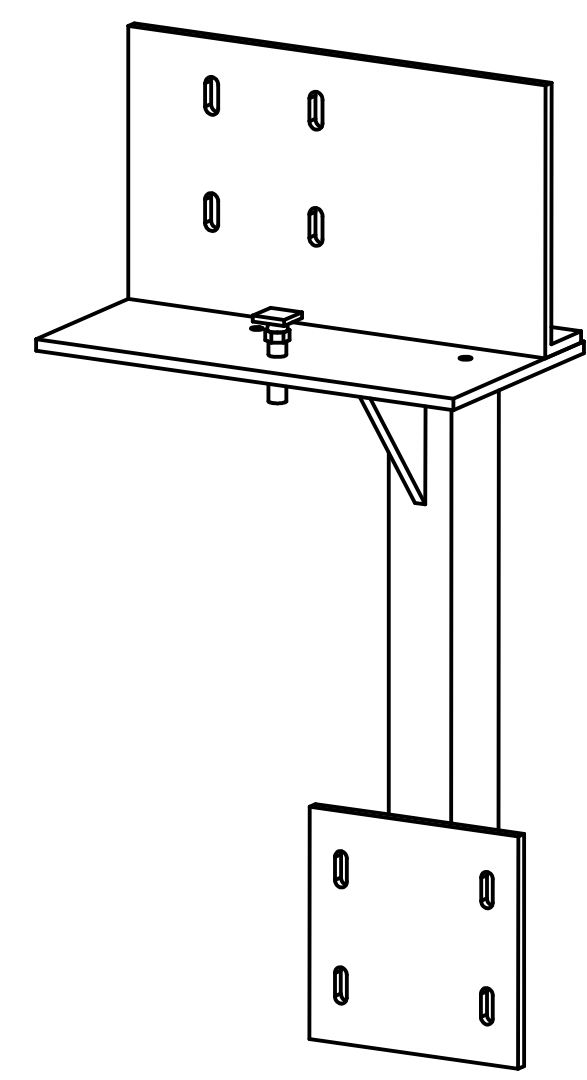
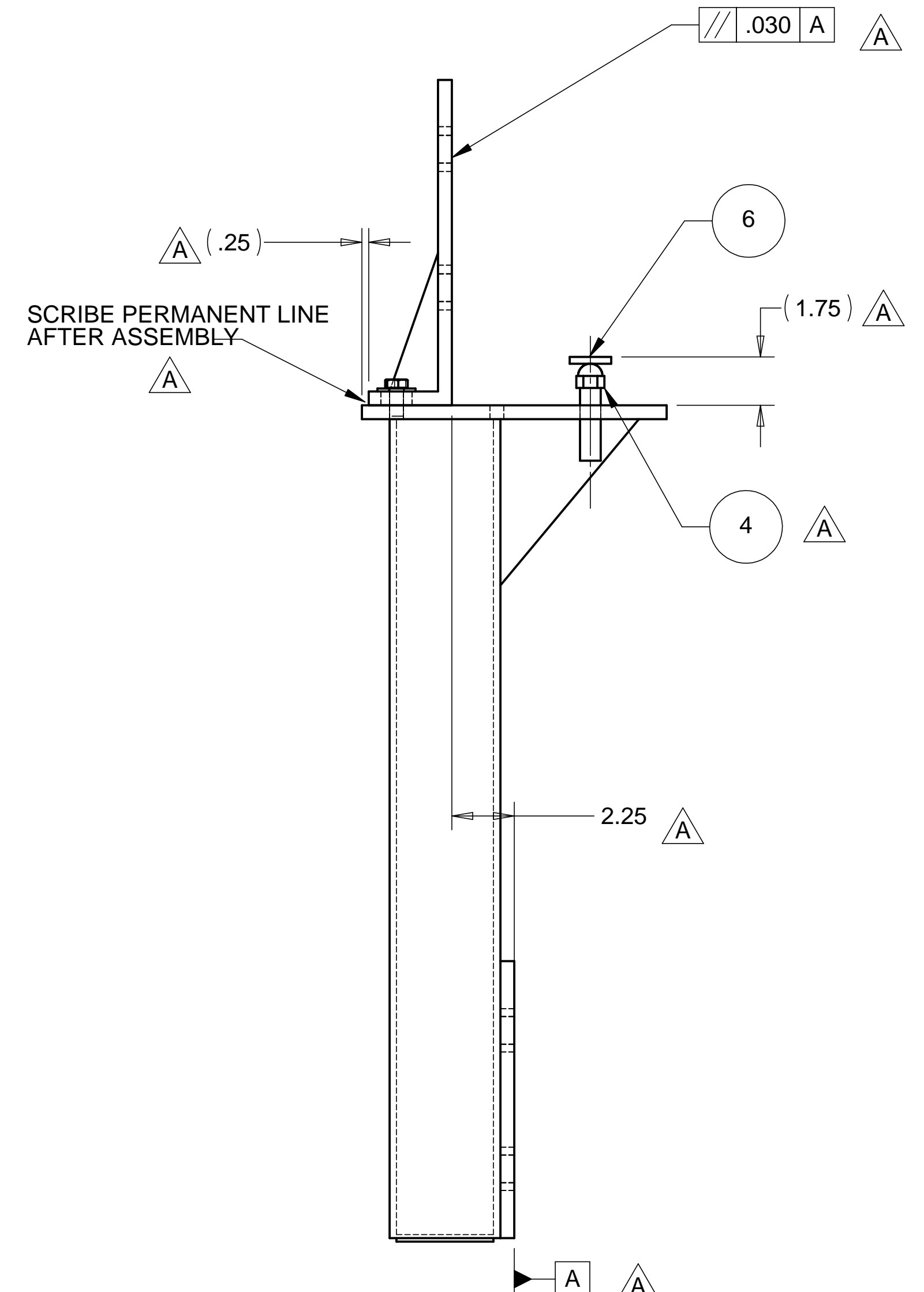
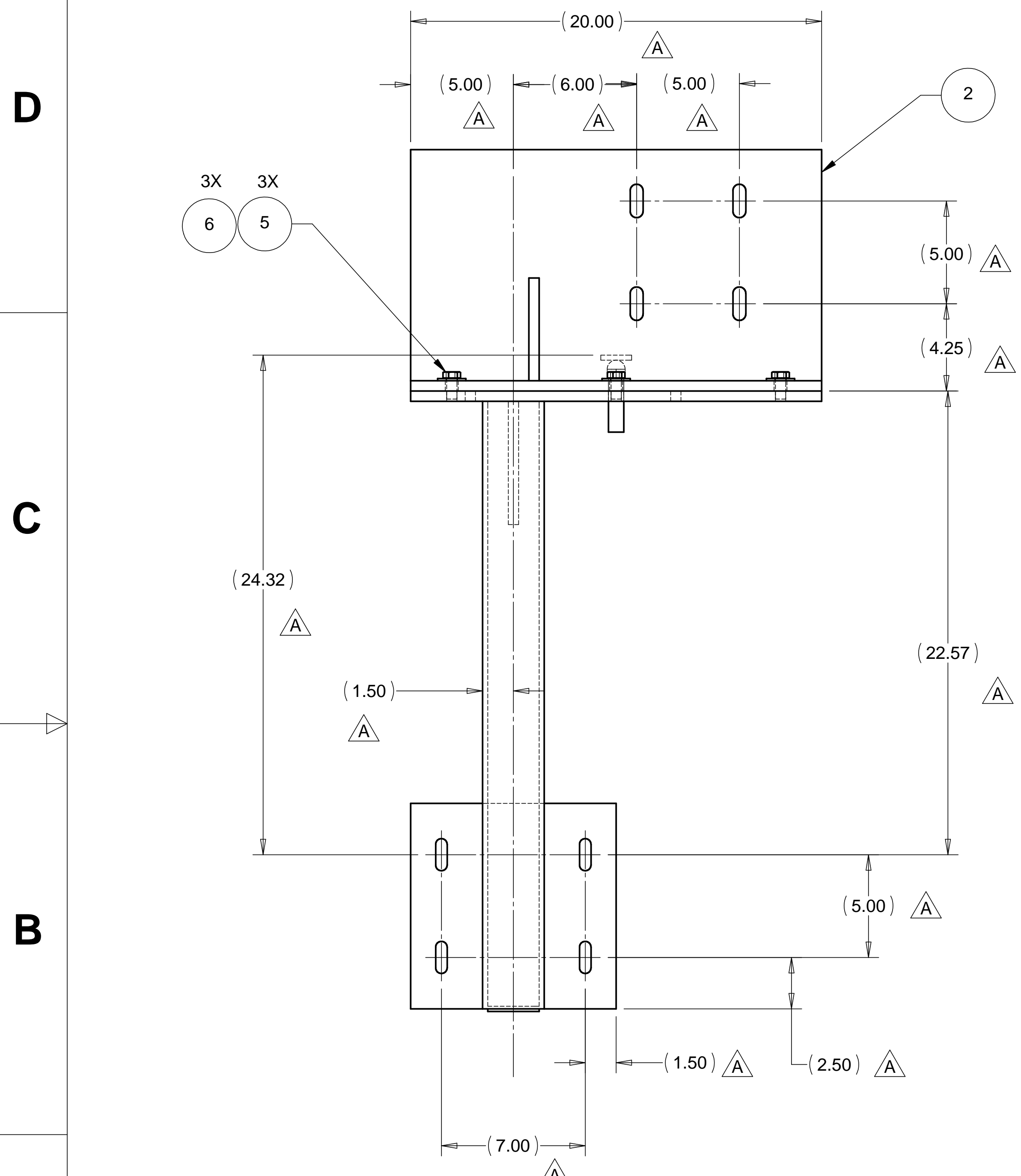


8 7 6 5 4 3 2 1

REVISIONS		DATE	APPROVED
REV.	DESCRIPTION		
A	ADDED REF. DIMS, CHANGED VIEW	3-21-98	WKM



**A**

NOTES: UNLESS OTHERWISE SPECIFIED  
 1. ASSEMBLY WEIGHS 117.51 lbs.

ITEM NO.	QTY.	PART NO.	DESCRIPTION
1	1	D972433-1	BSC CROSSBEAM BRACKET BASE WELDMENT (LEFT)
2	1	D972434-1	BSC CROSSBEAM BRACKET CLAMP WELDMENT (LEFT)
3	1	D972927-1	BSC CROSSBEAM BRACKET SHIM
4	1	CL-BL-6	ADJUSTABLE LOCATING BUTTON, CARR LANE
5	3		BOLT, HEX HD .500-13 UNC-2A X 1.00 LG., SST
6	3		WASHER, FLAT REGULAR .500 DIA., STAINLESS STEEL

PARTS LIST			
UNLESS OTHERWISE SPECIFIED: DIMENSIONS ARE IN INCHES -TOLERANCES-		CAD GENERATED DRAWING, DO NOT MANUALLY UPDATE DO NOT SCALE DRAWING	
DECIMALS	ANGULAR = +/- .30°	<b>HYTEC, INC</b> TITLE <b>BSC CROSSBEAM BRACKET ASSEMBLY (LEFT)</b> DWG. NO. <b>D972388</b> SIZE <b>D</b> SHEET NO. <b>1 of 1</b> SCALE <b>1/4</b> REVISION <b>A</b>	
.X = +/- .1	SURFACE FINISH = 250		
.XX = +/- .03			
.XXX = +/- .010			
FINISH			
PART NO. <b>D972388-1</b>		SIGNATURE	DATE
		DESIGNED W. K. MILLER	3-1-98
		DRAWN GERALD BUSTOS	3-1-98
		CHECKED HARRY SALAZAR	----
		ENGR. T. THOMPSON	----
		APPROVED T. THOMPSON	----

8 7 6 5 4 3 2 1