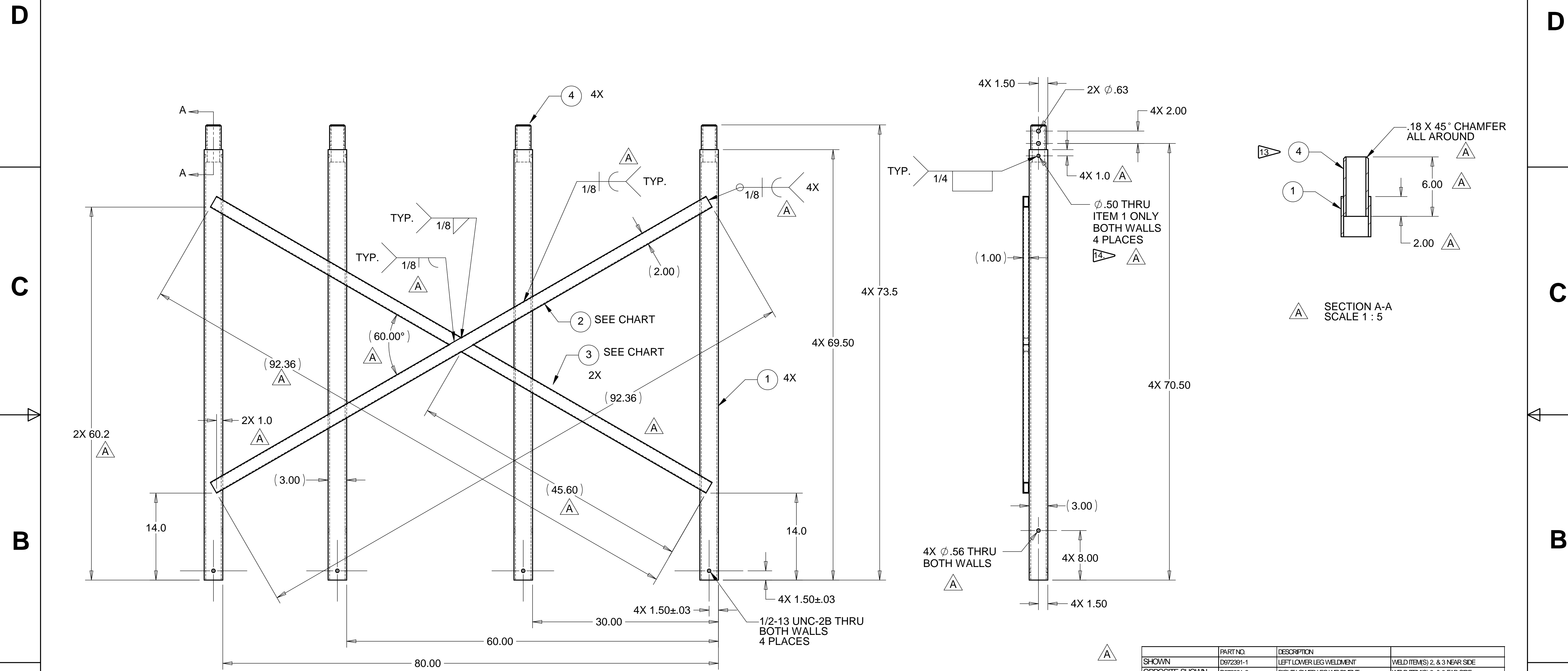


8 7 6 5 4 3 2 1

REVISIONS			
REV.	DESCRIPTION	DATE	APPROVED
A	ASSORTED WELDING AND DIM CHANGES	3-16-98	WKM



NOTES: UNLESS OTHERWISE SPECIFIED

- ALL DIMENSIONS IN INCHES
- DIMENSIONS AND TOLERANCING PER ASME Y14.5M-1994
- SURFACE TEXTURE PER ANSI/ASME B 46.1-1985
- REMOVE ALL BURRS AND BREAK SHARP EDGES TO A MAXIMUM OF .015
- ALL INSIDE CORNERS TO BE .015 RADIUS MAX
- COUNTERSINK 82 DEGREES ALL TAPPED HOLES TO MAJOR DIAMETER
- COUNTERSINK 82 DEGREES APPROXIMATELY .015 DEEP ALL DRILLED HOLES
- PARTS TO BE THOROUGHLY CLEANED TO REMOVE ALL OIL, GREASE, DIRT AND CHIPS
- PART NUMBER (DRAWING NO. PLUS DASH NO. PLUS SERIAL NO.) TO BE CLEARLY MARKED ON THE PART ITSELF.
- PART WEIGHS 270.4 Lbs.
- PRIMER (ALL VISIBLE SURFACES): SHERMAN WILLIAMS INDUSTRIAL WASH PRIMER PG062.
- PAINT (ALL VISIBLE SURFACES): SHERMAN WILLIAMS POLANE T POLYURETHANE COLOR BASIN, COLOR #F63TXL-4054-4352 FLAT.
- GRIND ITEM(S) 4 TO FIT INTO ITEM(S) 1 AND PART D972392. MATCH DRILL HOLES IN ITEM 4 TO PARTS D972392-1, AND -2.

SHOWN	PART NO.	DESCRIPTION	WELD ITEM(S)
OPPOSITE SHOWN	D972391-1	LEFT LOWER LEG WELDMENT	WELD ITEM(S) 2, & 3 NEAR SIDE
	D972391-2	RIGHT LOWER LEG WELDMENT	WELD ITEM(S) 2, & 3 FAR SIDE

ITEM NO.	QTY.	PART NO.	DESCRIPTION
1	4	TUBING, 3 X 3 X .25 WALL	A 36 STEEL
2	1	TUBING, 2 X 1 X .125 WALL	A 36 STEEL
3	2	TUBING, 2 X 1 X .125 WALL	A 36 STEEL
4	4	TUBING, 2 1/2 X 2 1/2 X .25 WALL	A 36 STEEL

UNLESS OTHERWISE SPECIFIED: DIMENSIONS ARE IN INCHES -TOLERANCES-

DECIMALS: .XX = +/- .06, .XXX = +/- .010
 ANGULAR = +/- .30°
 SURFACE FINISH = 250

CAD GENERATED DRAWING. DO NOT MANUALLY UPDATE. DO NOT SCALE DRAWING.

HYTEC, INC

TITLE: **BSC ROLLER SYSTEM LOWER LEG WELDMENT**

FINISH: _____

DESIGNED: W. K. MILLER, DATE: 2/2/98

DRAWN: W. K. MILLER, DATE: 2/2/98

CHECKED: HARRY SALAZAR, DATE: 3-16-98

ENGR.: T. THOMPSON, DATE: 3-16-98

APPROVED: T. THOMPSON, DATE: 3-16-98

PART NO. **D972391-1, -2**

DWG. NO. **D972391** SIZE **D** SHEET NO. **1 of 1**

SCALE 1/8 REVISION **A**