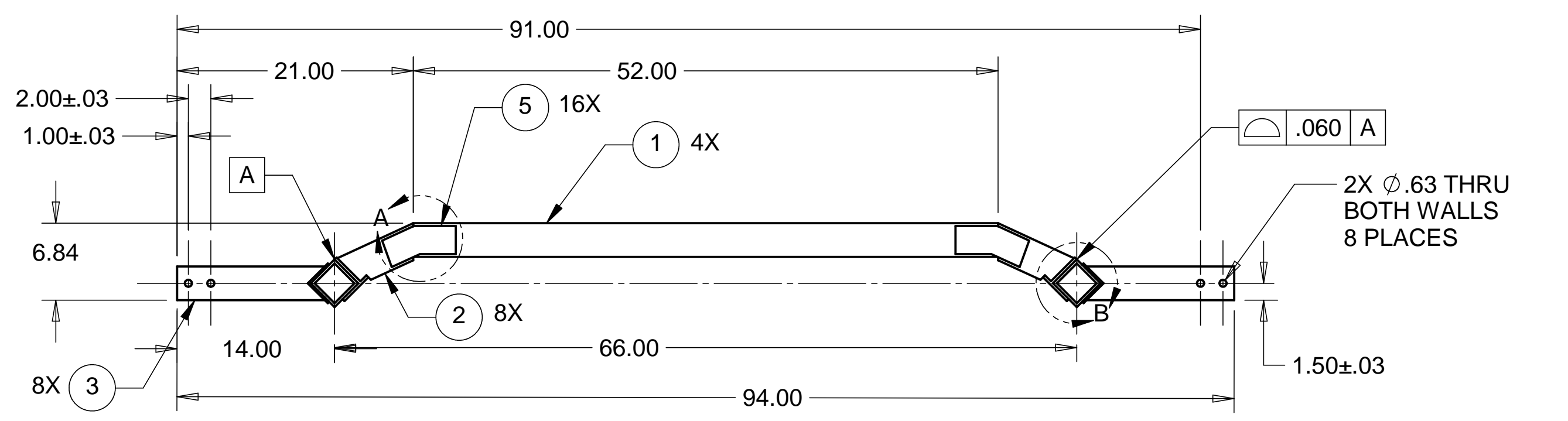
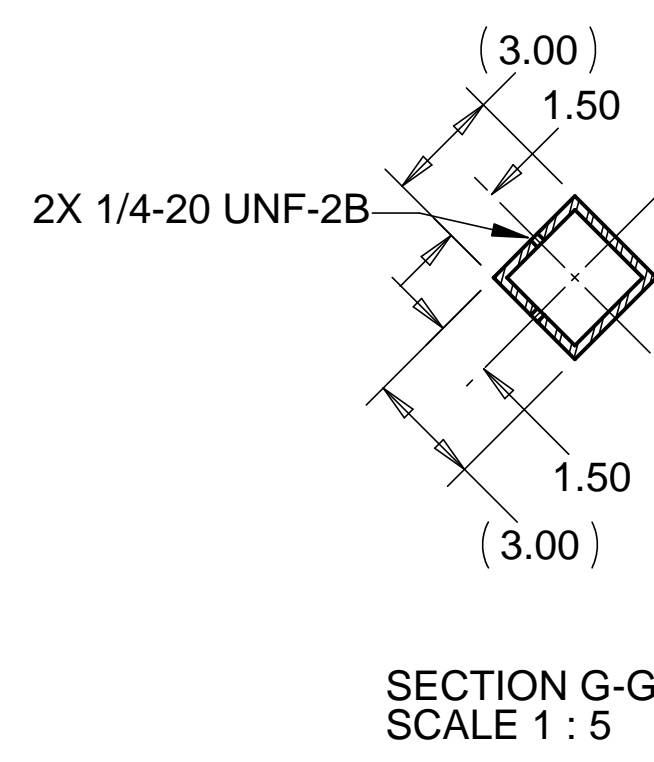
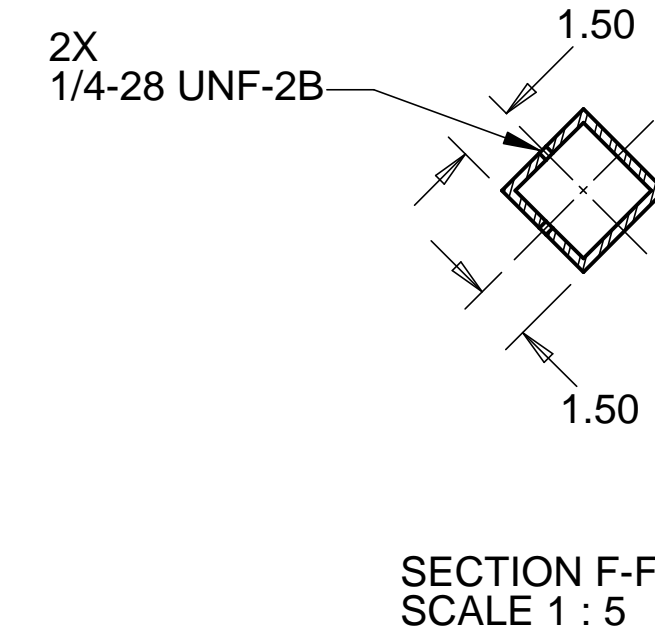
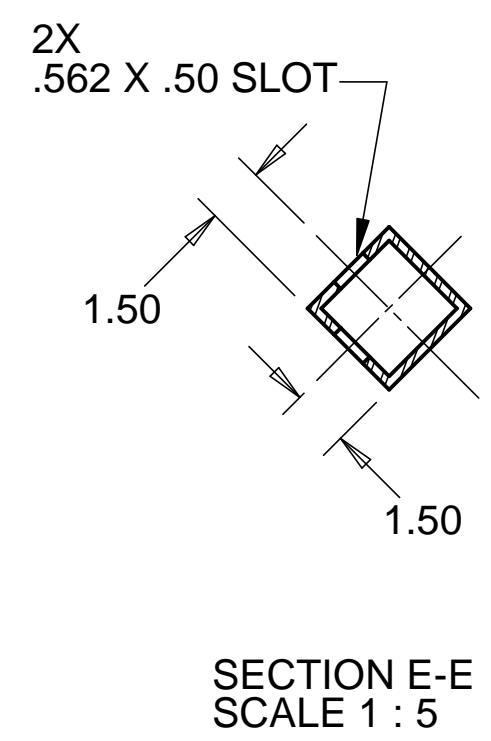
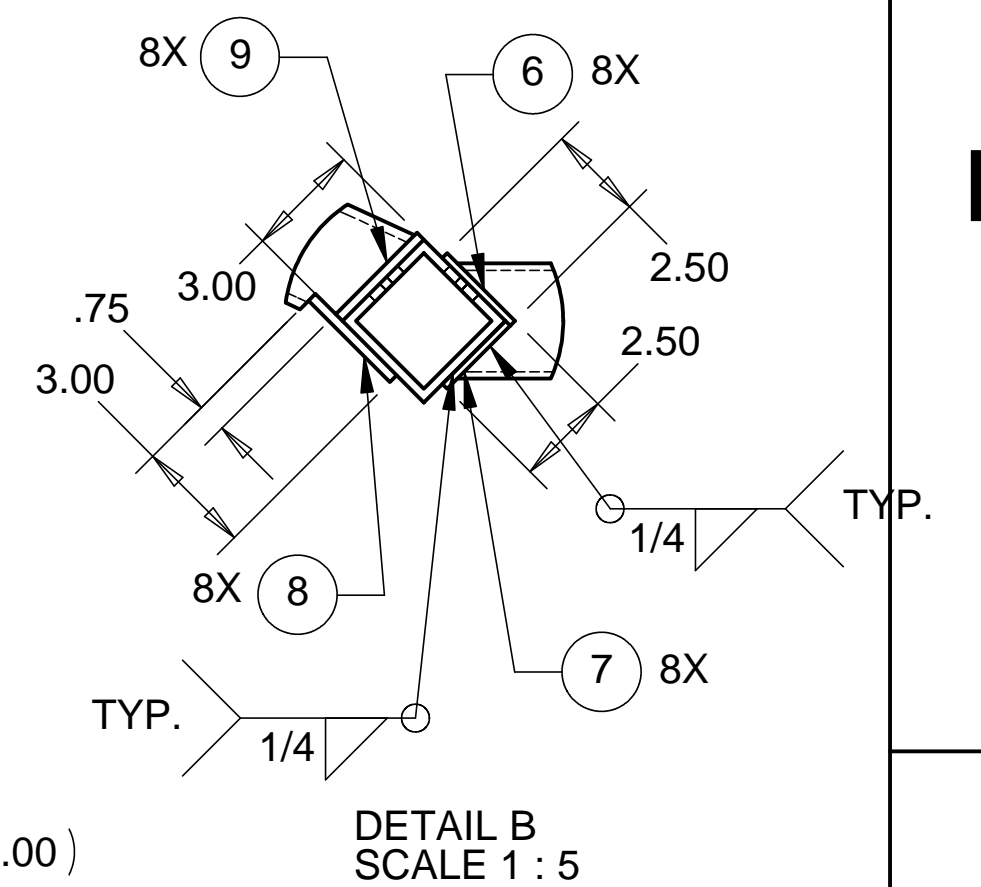
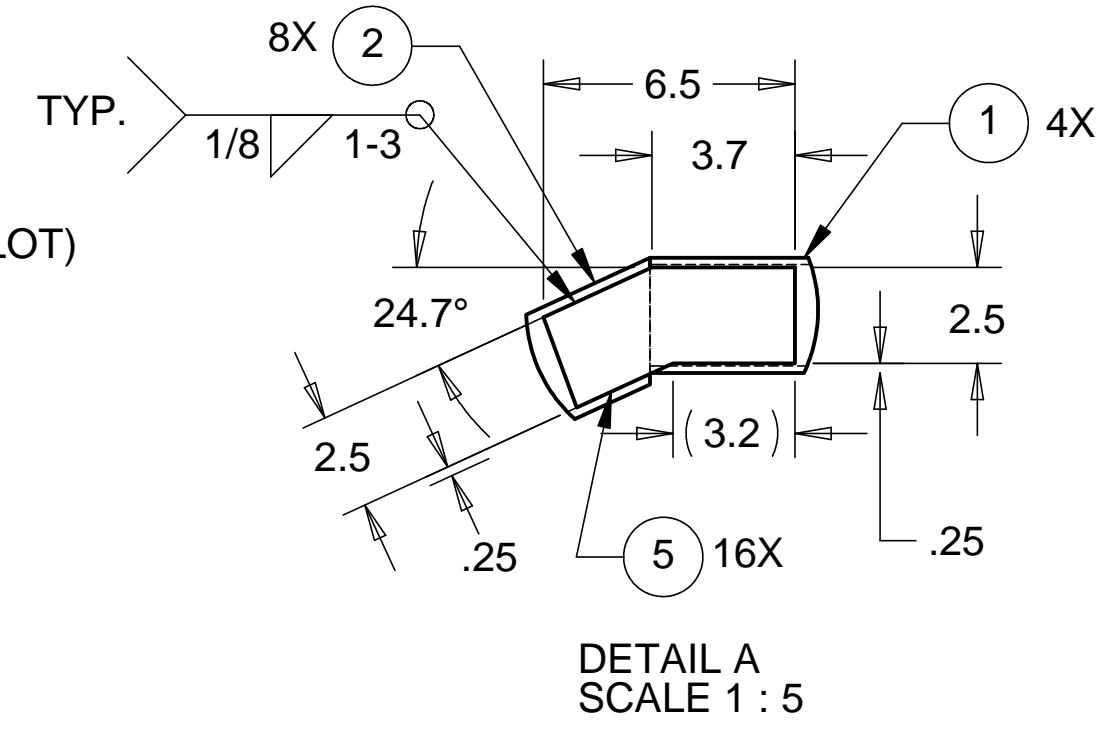
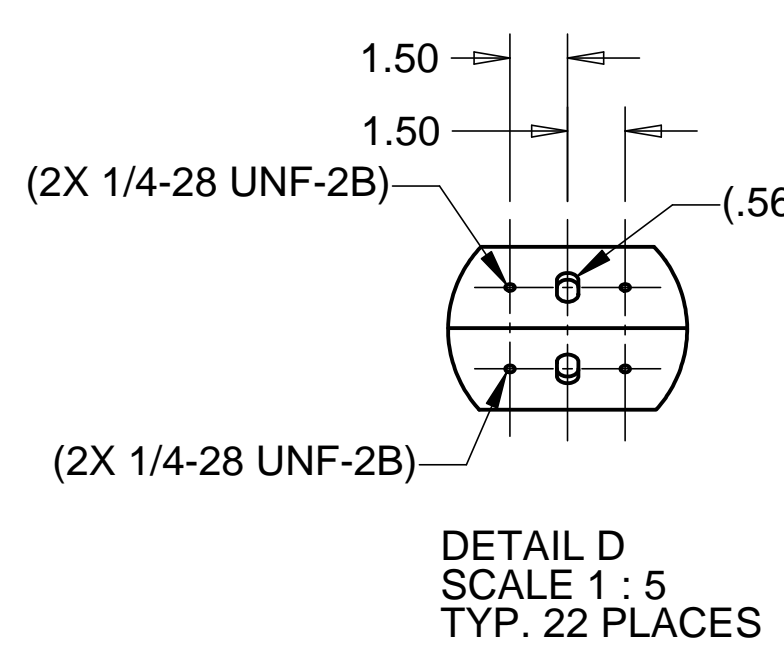
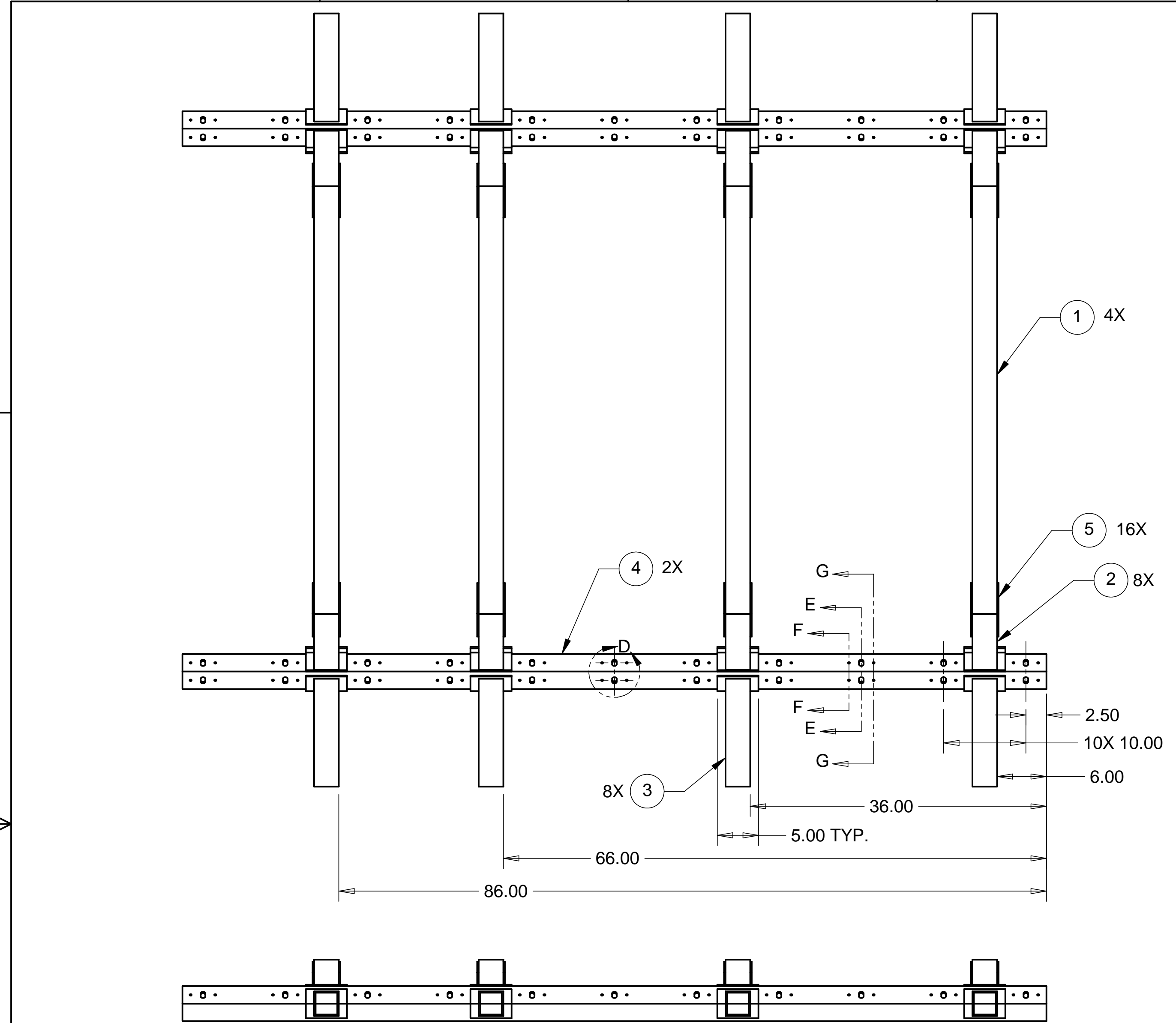


REVISIONS			
REV.	DESCRIPTION	DATE	APPROVED



NOTES: UNLESS OTHERWISE SPECIFIED

- ALL DIMENSIONS IN INCHES
- DIMENSIONS AND TOLERANCING PER ASME Y14.5M-1994
- SURFACE TEXTURE PER ANSI/ASME B 46.1-1985
- REMOVE ALL BURRS AND BREAK SHARP EDGES TO A MAXIMUM OF .015
- ALL INSIDE CORNERS TO BE .015 RADIUS MAX
- COUNTERSINK 82 DEGREES ALL TAPPED HOLES TO MAJOR DIAMETER
- COUNTERSINK 82 DEGREES APPROXIMATELY .015 DEEP ALL DRILLED HOLES
- PARTS TO BE THOROUGHLY CLEANED TO REMOVE ALL OIL, GREASE, DIRT AND CHIPS
- PART NUMBER (DRAWING NO. PLUS DASH NO. PLUS SERIAL NO.) TO BE CLEARLY MARKED ON THE PART ITSELF.
- PART WEIGHS 425.0 Lbs.
- PAINT PART USING SHERMAN WILLIAMS MEDIUM TEXTURED BEIGE (D13 POLANE T-PLUS, POLYURETHANE ENAMEL, F63 SERIES, #SW-F63TX-H-1651-5864).

ITEM NO.	QTY.	DESCRIPTION	MATERIAL
1	4	TUBING, 3 X 3 X .18 WALL	A36 STEEL
2	8	TUBING, 3 X 3 X .18 WALL	A36 STEEL
3	8	TUBING, 3 X 3 X .25 WALL	A36 STEEL
4	2	TUBING, 3 X 3 X .25 WALL	A36 STEEL
5	16	PLATE, .125 THK	1010 STEEL
6	8	PLATE, .25 THK	1010 STEEL
7	8	PLATE, .25 THK	1010 STEEL
8	8	PLATE, .25 THK	1010 STEEL
9	8	PLATE, .25 THK	1010 STEEL

PARTS LIST

UNLESS OTHERWISE SPECIFIED: DIMENSIONS ARE IN INCHES -TOLERANCES-	CAD GENERATED DRAWING, DO NOT MANUALLY UPDATE DO NOT SCALE DRAWING		HYTEC, INC TITLE: BSC ROLLER SYSTEM MIDDLE STRUCTURE WELDMENT	
	DECIMALS .XX = +/- .06 .XXX = +/- .030	ANGULAR = +/- .30° SURFACE FINISH = 250		
PART NO. D972393-1	CHECKED HARRY SALAZAR	ENGR. T. THOMPSON	APPROVED T. THOMPSON	DWG. NO. D972393 SIZE D SHEET NO. 1 of 1 REVISION