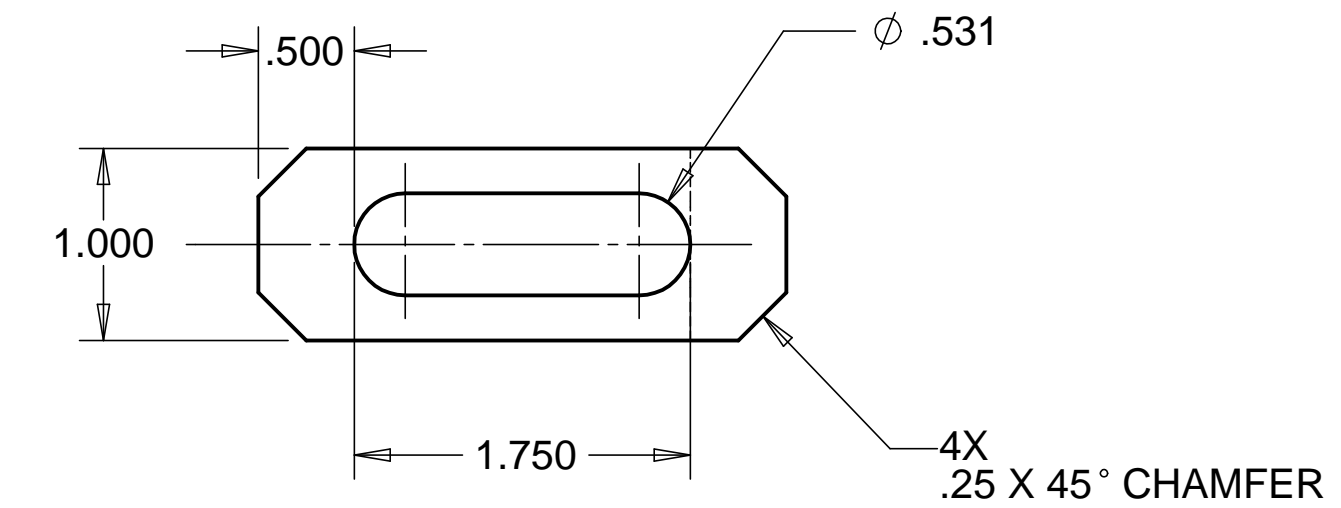


8 7 6 5 4 3 2 1

REVISIONS			
REV.	DESCRIPTION	DATE	APPROVED
A	SEE ECN# D972418-A FOR CHANGE LIST	03-27-98	T. THOMPSON

D

D

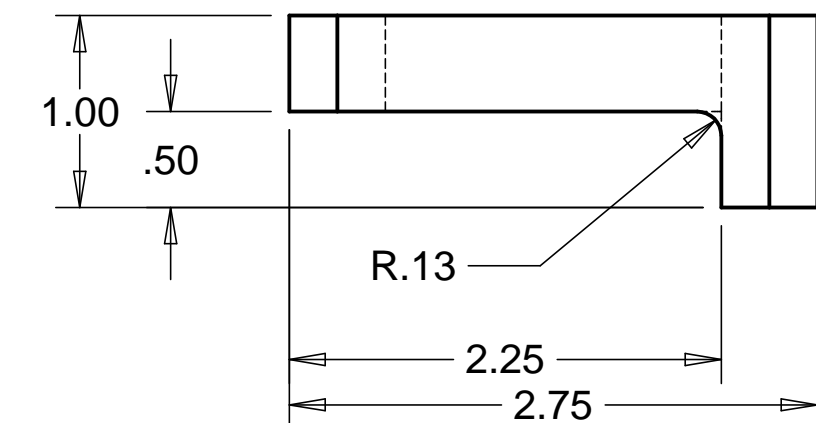
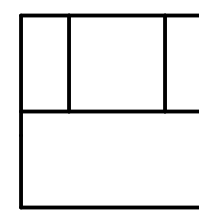


C

C

B

B



MATL: 6061-T6 ALUM.

WEIGHT: .08 lbs.



NOTES: UNLESS OTHERWISE SPECIFIED

- ALL DIMENSIONS IN INCHES
- DIMENSIONS AND TOLERANCING PER ASME Y14.5M-1994
- SURFACE TEXTURE PER ANSI/ASME B 46.1-1985
- REMOVE ALL BURRS AND BREAK SHARP EDGES TO A MAXIMUM OF .015
- ALL INSIDE CORNERS TO BE .015 RADIUS MAX
- COUNTERSINK 82 DEGREES ALL TAPPED HOLES TO MAJOR DIAMETER
- COUNTERSINK 82 DEGREES APPROXIMATELY .015 DEEP ALL DRILLED HOLES
- PARTS TO BE THOROUGHLY CLEANED TO REMOVE ALL OIL, GREASE, DIRT AND CHIPS
- PART NUMBER (DRAWING NO. PLUS DASH NO. PLUS SERIAL NO. ) TO BE CLEARLY MARKED ON THE PART ITSELF.

A

A

PARTS LIST			
UNLESS OTHERWISE SPECIFIED: DIMENSIONS ARE IN INCHES -TOLERANCES-  DECIMALS      ANGULAR = +/- .30' .XX = +/- .03      SURFACE FINISH = 250 .XXX = +/- .010	CAD GENERATED DRAWING, DO NOT MANUALLY UPDATE DO NOT SCALE DRAWING		<b>HYTEC, INC</b> TITLE <b>LIGO            PIER ADAPTER PLATE            MOUNTING CLAMP</b>
	FINISH	SIGNATURE	DATE
PART NO. <b>D972418-1</b>	DESIGNED	W. K. MILLER	11-17-97
	DRAWN	W. K. MILLER	11-17-97
	CHECKED	HARRY SALAZAR	11-20-97
	ENGR.	T. THOMPSON	12-01-97
	APPROVED	T. THOMPSON	12-01-97
	DWG. NO.	<b>D972418</b>	SIZE SHEET NO. <b>D 1 of 1</b>
	SCALE	1/1	REVISION <b>A</b>

8 7 6 5 4 3 2 1