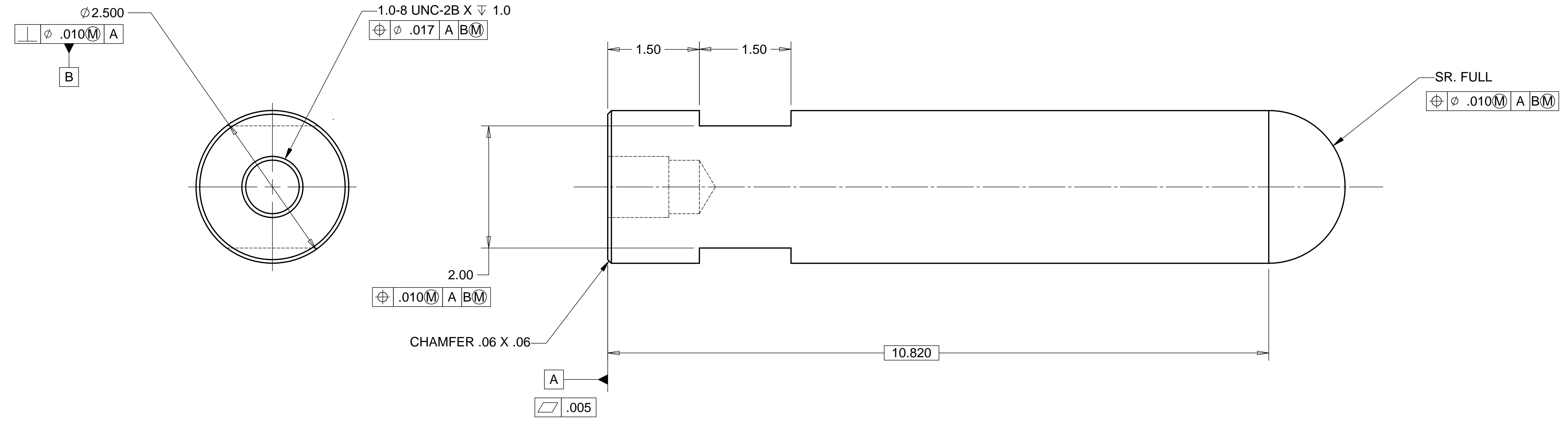
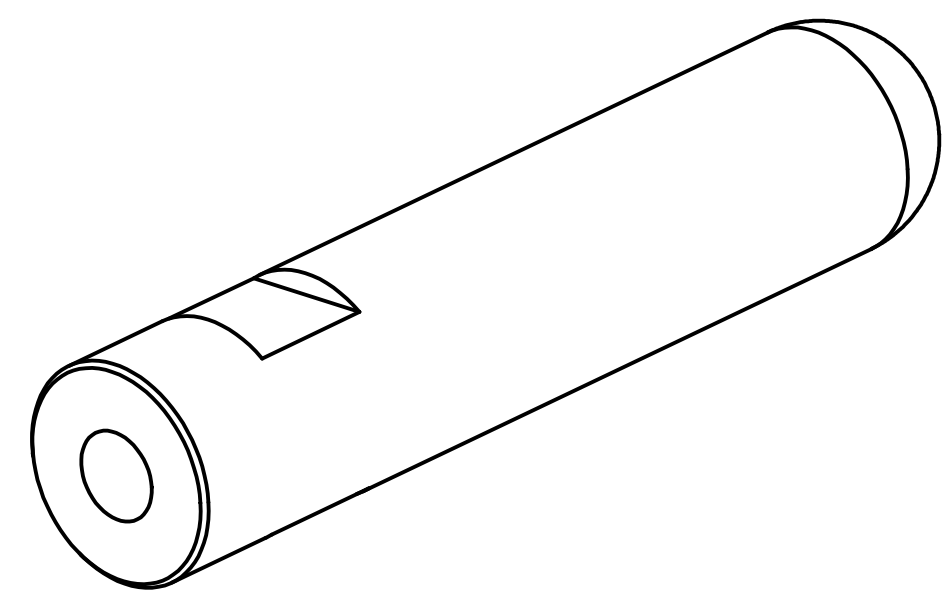


8 7 6 5 4 3 2 1

REVISIONS			
REV.	DESCRIPTION	DATE	APPROVED



WEIGHT: 16.0

NOTES: UNLESS OTHERWISE SPECIFIED

1. ALL DIMENSIONS IN INCHES
2. DIMENSIONS AND TOLERANCING PER ASME Y14.5M-1994
3. SURFACE TEXTURE PER ANSI/ASME B 46.1-1985
4. REMOVE ALL BURRS AND BREAK SHARP EDGES TO A MAXIMUM OF .015
5. ALL INSIDE CORNERS TO BE .015 RADIUS MAX
6. COUNTERSINK 82 DEGREES ALL TAPPED HOLES TO MAJOR DIAMETER
7. COUNTERSINK 82 DEGREES APPROXIMATELY .015 DEEP ALL DRILLED HOLES
8. PARTS TO BE THOROUGHLY CLEANED TO REMOVE ALL OIL, GREASE, DIRT AND CHIPS
9. PART NUMBER (DRAWING NO. PLUS DASH NO. PLUS SERIAL NO.) TO BE CLEARLY MARKED ON THE PART ITSELF.

ITEM NO.	QTY.	DESCRIPTION	MATERIAL
1	1	ROD, 2.50 DIA.	304 EZ CUT STAINLESS STEEL
PARTS LIST			
UNLESS OTHERWISE SPECIFIED: DIMENSIONS ARE IN INCHES -TOLERANCES-		CAD GENERATED DRAWING, DO NOT MANUALLY UPDATE DO NOT SCALE DRAWING	
DECIMALS	ANGULAR = +/- .30'	HYTEC, INC TITLE BSC CENTERING JIG POINT CONTACT DETAIL	
.XX = +/- .03	SURFACE FINISH = 250		
FINISH	SIGNATURE	DATE	DWG. NO. D972421 SIZE SHEET NO. D 1 of 1
DESIGNED	W. K. MILLER	1-14-98	
DRAWN	GERALD BUSTOS	1-14-98	
CHECKED	HARRY SALAZAR	----	
PART NO. D972421-1	ENGR.	T. THOMPSON	----
	APPROVED	T. THOMPSON	----
		SCALE 1/1	REVISION

8 7 6 5 4 3 2 1