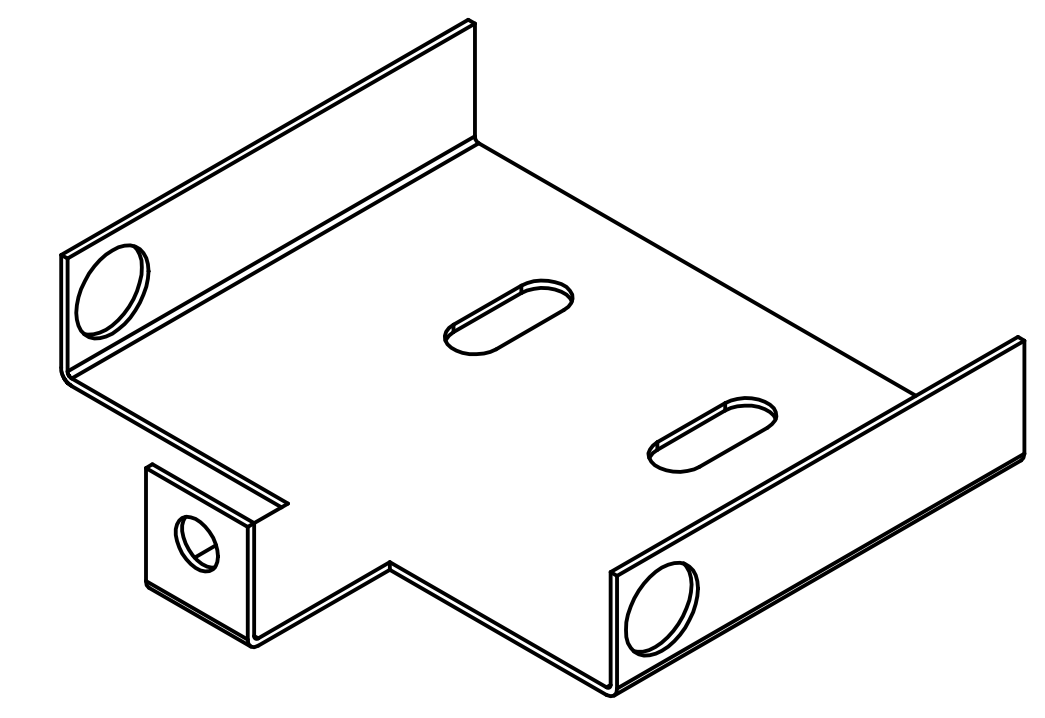
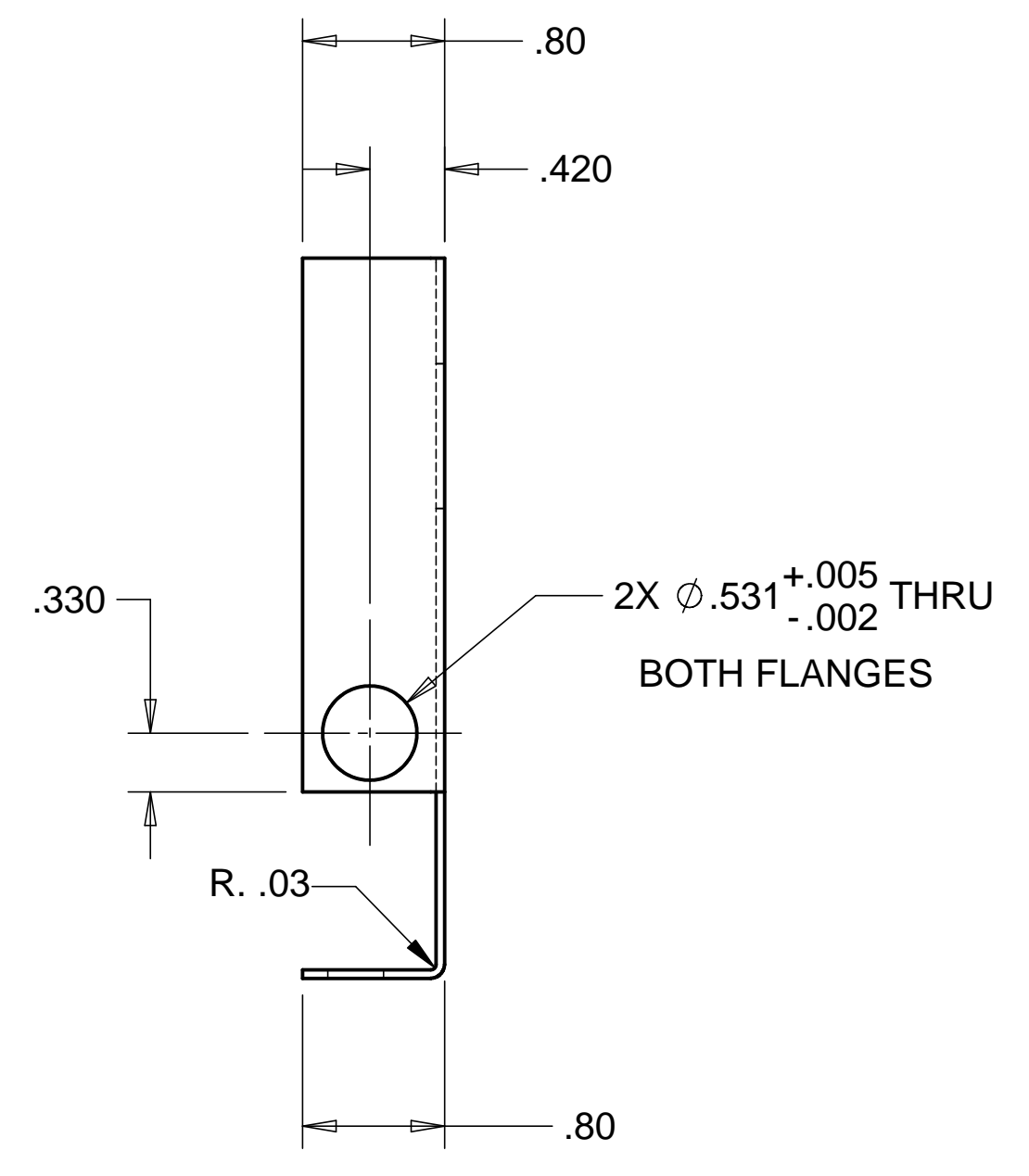
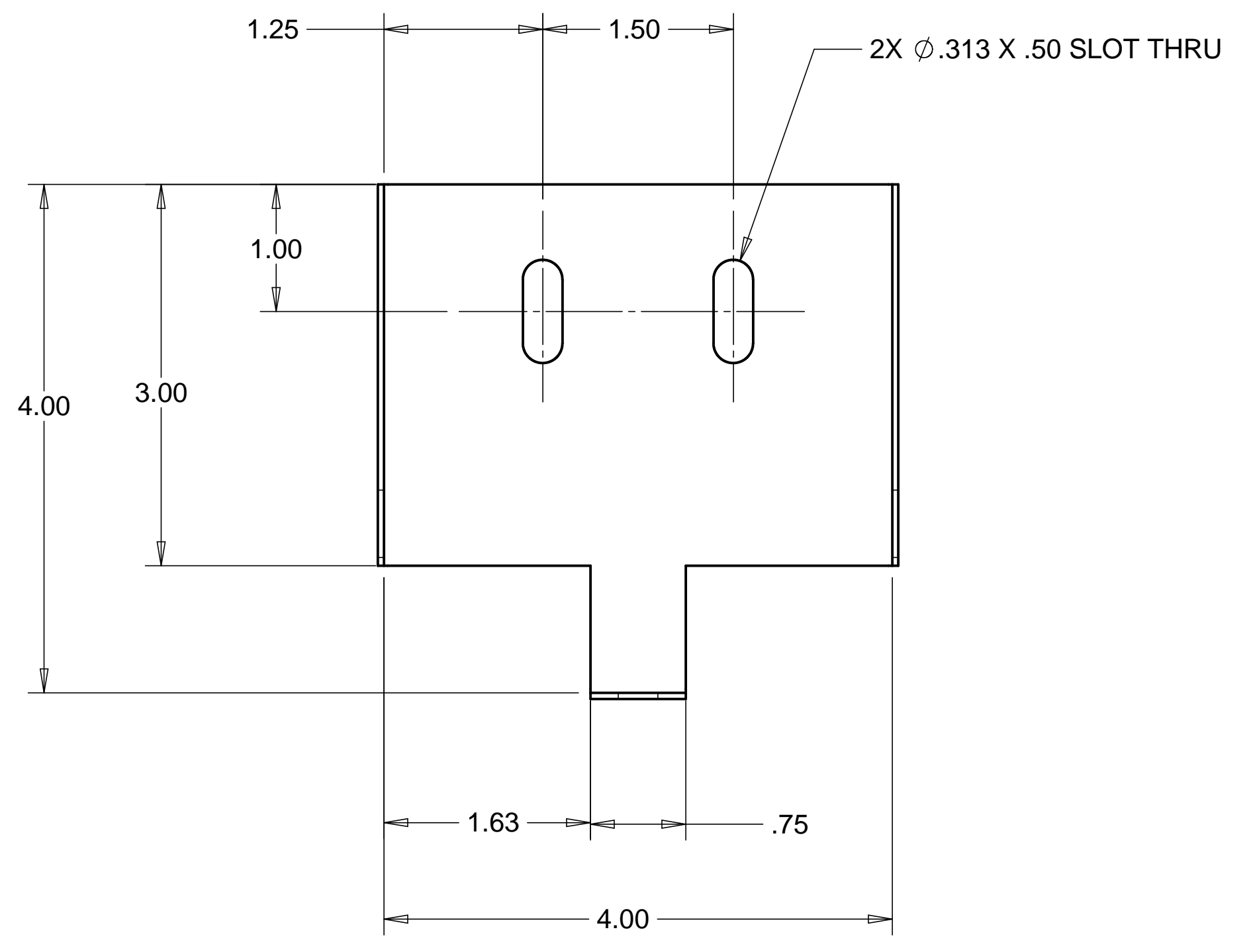
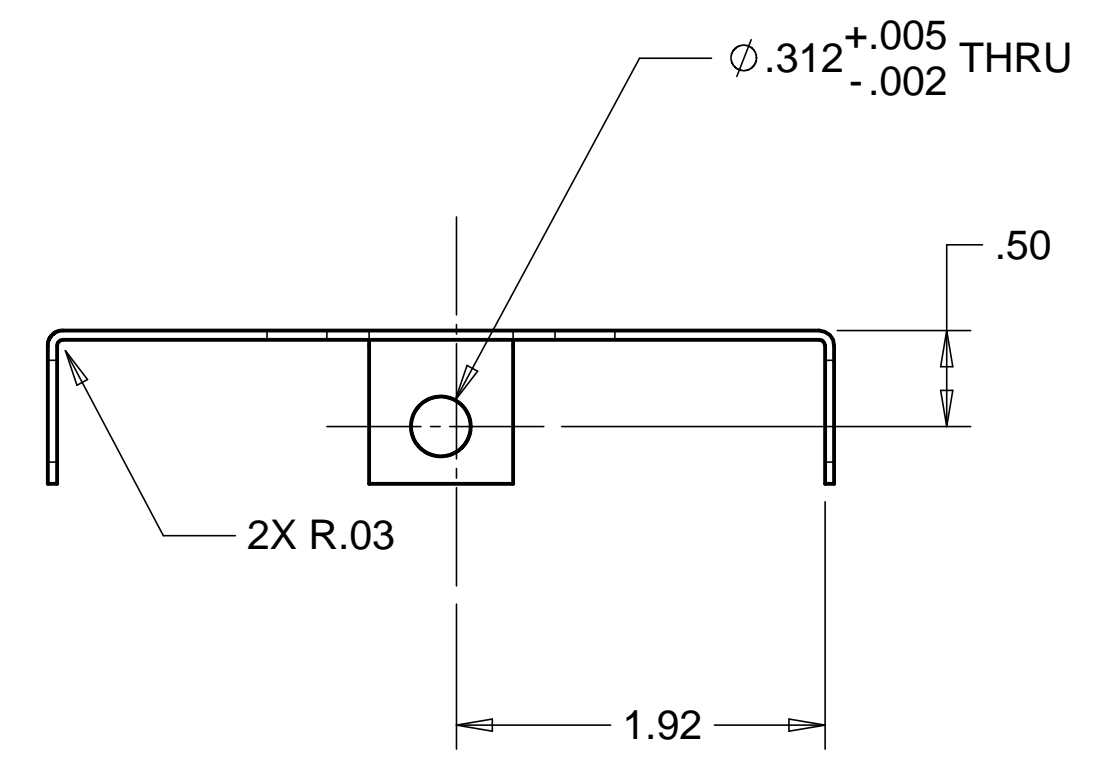


8 7 6 5 4 3 2 1

REVISIONS			
REV.	DESCRIPTION	DATE	APPROVED



WEIGHT: .25 lbs

NOTES: UNLESS OTHERWISE SPECIFIED

- ALL DIMENSIONS IN INCHES
- DIMENSIONS AND TOLERANCING PER ASME Y14.5M-1994
- SURFACE TEXTURE PER ANSI/ASME B 46.1-1985
- REMOVE ALL BURRS AND BREAK SHARP EDGES TO A MAXIMUM OF .015
- ALL INSIDE CORNERS TO BE .015 RADIUS MAX
- COUNTERSINK 82 DEGREES ALL TAPPED HOLES TO MAJOR DIAMETER
- COUNTERSINK 82 DEGREES APPROXIMATELY .015 DEEP ALL DRILLED HOLES
- PARTS TO BE THOROUGHLY CLEANED TO REMOVE ALL OIL, GREASE, DIRT AND CHIPS
- PART NUMBER (DRAWING NO. PLUS DASH NO. PLUS SERIAL NO.) TO BE CLEARLY MARKED ON THE PART ITSELF.

ITEM NO.	QTY.	DESCRIPTION	MATERIAL
1	1	SHEET, .048 THK.	304 STAINLESS STEEL
PARTS LIST			
UNLESS OTHERWISE SPECIFIED: DIMENSIONS ARE IN INCHES -TOLERANCES-		CAD GENERATED DRAWING, DO NOT MANUALLY UPDATE DO NOT SCALE DRAWING	
DECIMALS .XX = +/- .06 .XXX = +/- .020	ANGULAR = +/- .30° SURFACE FINISH = 250		
FINISH	SIGNATURE	DATE	HYTEC, INC TITLE CENTERING JIG Z-ELEVATION STAGE VERTICAL BASEPLATE
DESIGNED	W. K. MILLER	1-14-98	
DRAWN	GERALD BUSTOS	1-14-98	
CHECKED	HARRY SALAZAR	----	
PART NO. D972425-1	ENGR.	T. THOMPSON	----
	APPROVED	T. THOMPSON	----
		SCALE 1/1	DWG. NO. D972425 SIZE D SHEET NO. 1 of 1
			REVISION

8 7 6 5 4 3 2 1