

8 7 6 5 4 3 2 1

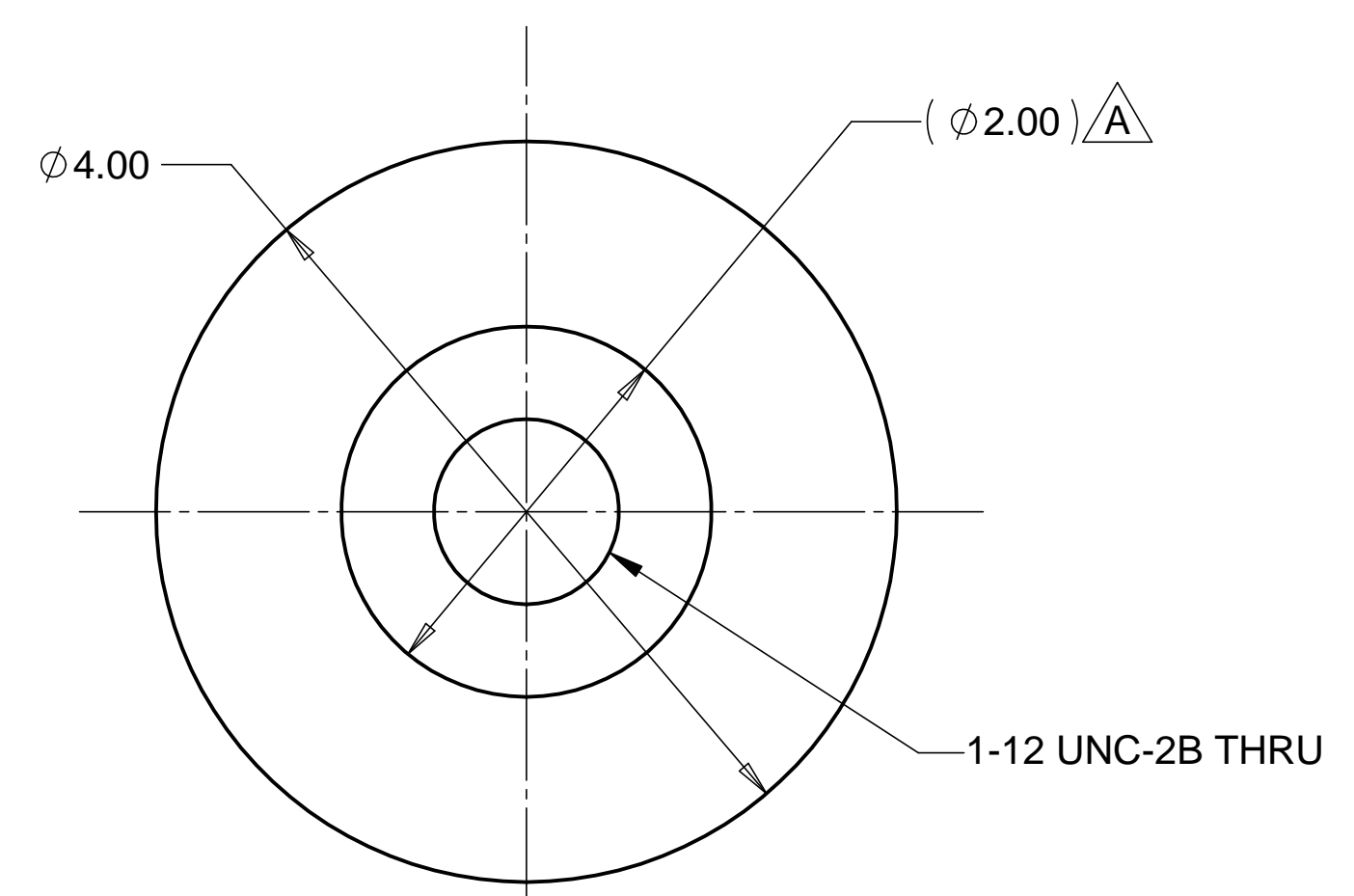
REVISIONS			
REV.	DESCRIPTION	DATE	APPROVED
A	REVISED DIM. AND PAINT SPEC.	3-16-98	WKM

D

D

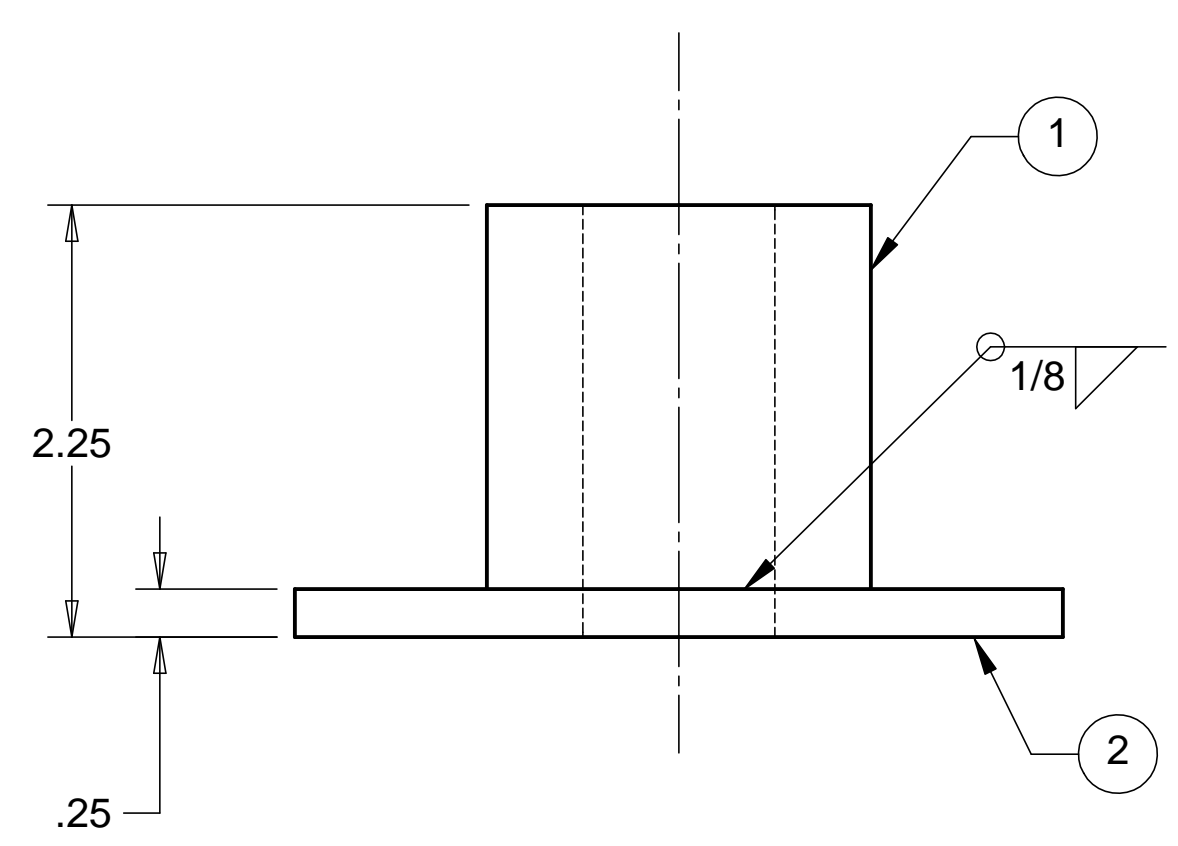
C

C



B

B



A

A

NOTES: UNLESS OTHERWISE SPECIFIED

1. ALL DIMENSIONS IN INCHES
2. DIMENSIONS AND TOLERANCING PER ASME Y14.5M-1994
3. SURFACE TEXTURE PER ANSI/ASME B 46.1-1985
4. REMOVE ALL BURRS AND BREAK SHARP EDGES TO A MAXIMUM OF .015
5. ALL INSIDE CORNERS TO BE .015 RADIUS MAX
6. COUNTERSINK 82 DEGREES ALL TAPPED HOLES TO MAJOR DIAMETER
7. COUNTERSINK 82 DEGREES APPROXIMATELY .015 DEEP ALL DRILLED HOLES
8. PARTS TO BE THOROUGHLY CLEANED TO REMOVE ALL OIL, GREASE, DIRT AND CHIPS
9. PART NUMBER (DRAWING NO. PLUS DASH NO. PLUS SERIAL NO.) TO BE CLEARLY MARKED ON THE PART ITSELF.
10. PART WEIGHS 2.0 Lbs.
11. PRIMER (ALL VISIBLE SURFACES):
SHERMAN WILLIAMS INDUSTRIAL WASH PRIMER PG062.
12. PAINT (ALL VISIBLE SURFACES):
SHERMAN WILLIAMS POLANE T POLYURETHANE COLOR BASIN,
COLOR #F63TXL-4054-4352 FLAT.

ITEM NO.	QTY.	PART NO.	DESCRIPTION
1	1	ROUND STOCK, 2.0 O.D.	1010 STEEL
2	1	PLATE	1010 STEEL

PARTS LIST				HYTEC, INC	
UNLESS OTHERWISE SPECIFIED: DIMENSIONS ARE IN INCHES -TOLERANCES-		CAD GENERATED DRAWING, DO NOT MANUALLY UPDATE DO NOT SCALE DRAWING		TITLE BSC ROLLER SYSTEM FOOT WELDMENT	
DECIMALS .XX = +/- .06 .XXX = +/- .010	ANGULAR = +/- 30'	SURFACE FINISH = 250		DWG. NO. D972441	
FINISH	SIGNATURE	DATE	SIZE SHEET NO.		
DESIGNED W. K. MILLER	2/7/98	D 1 of 1			
DRAWN W. K. MILLER	2/7/98	REVISION A			
CHECKED HARRY SALAZAR	3-16-98	SCALE 1/1			
ENGR. T. THOMPSON	3-16-98	REVISION A			
APPROVED T. THOMPSON	3-16-98	REVISION A			
PART NO. D972441-1	SCALE 1/1				

8 7 6 5 4 3 2 1