

8 7 6 5 4 3 2 1

REVISIONS			
REV.	DESCRIPTION	DATE	APPROVED

D

D

C

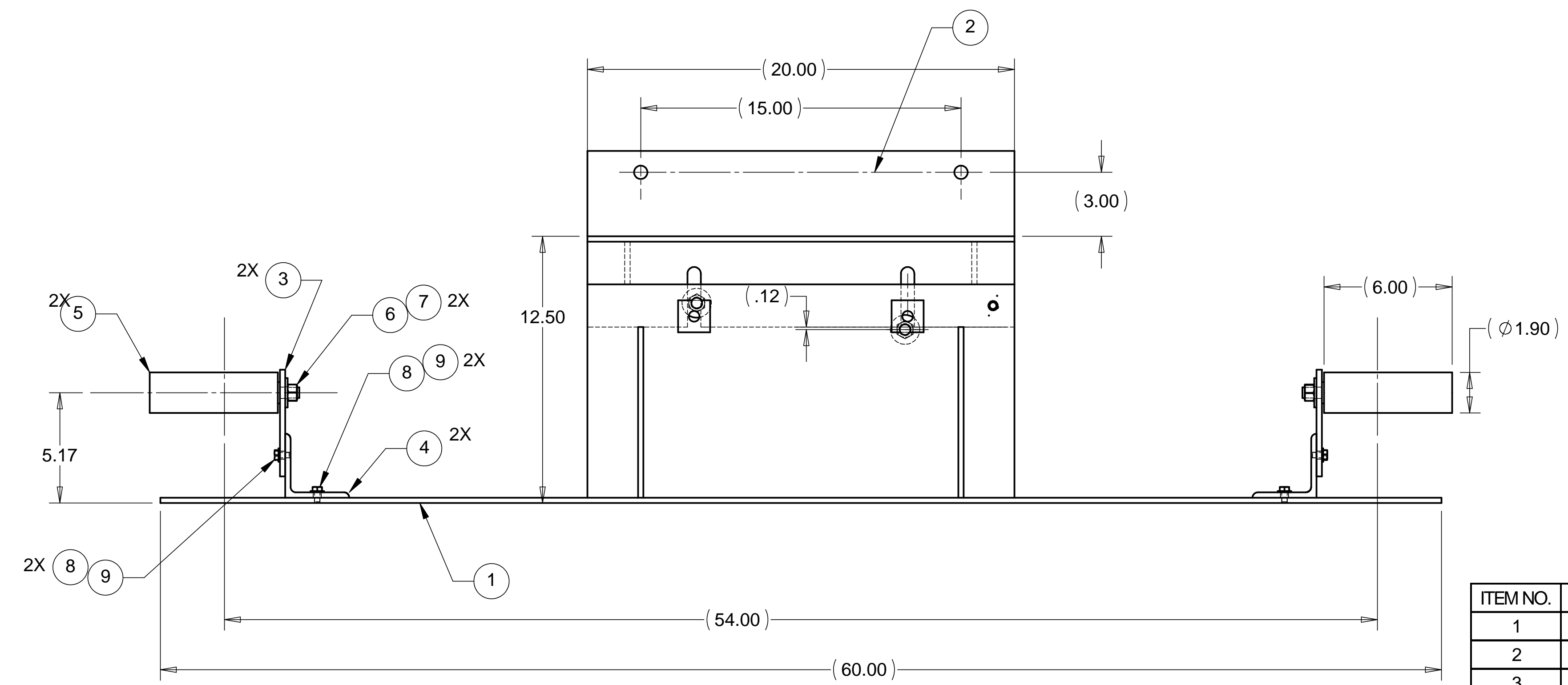
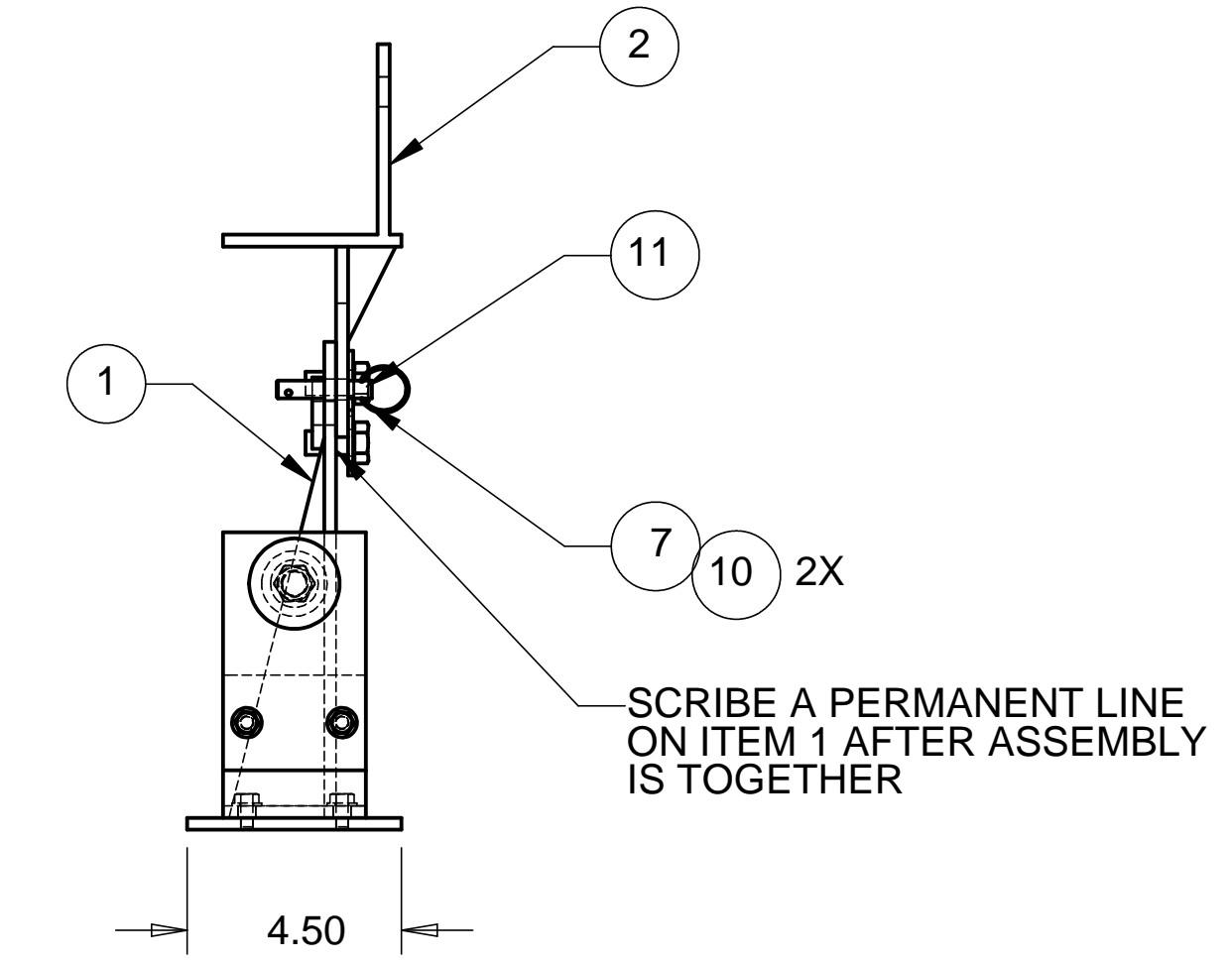
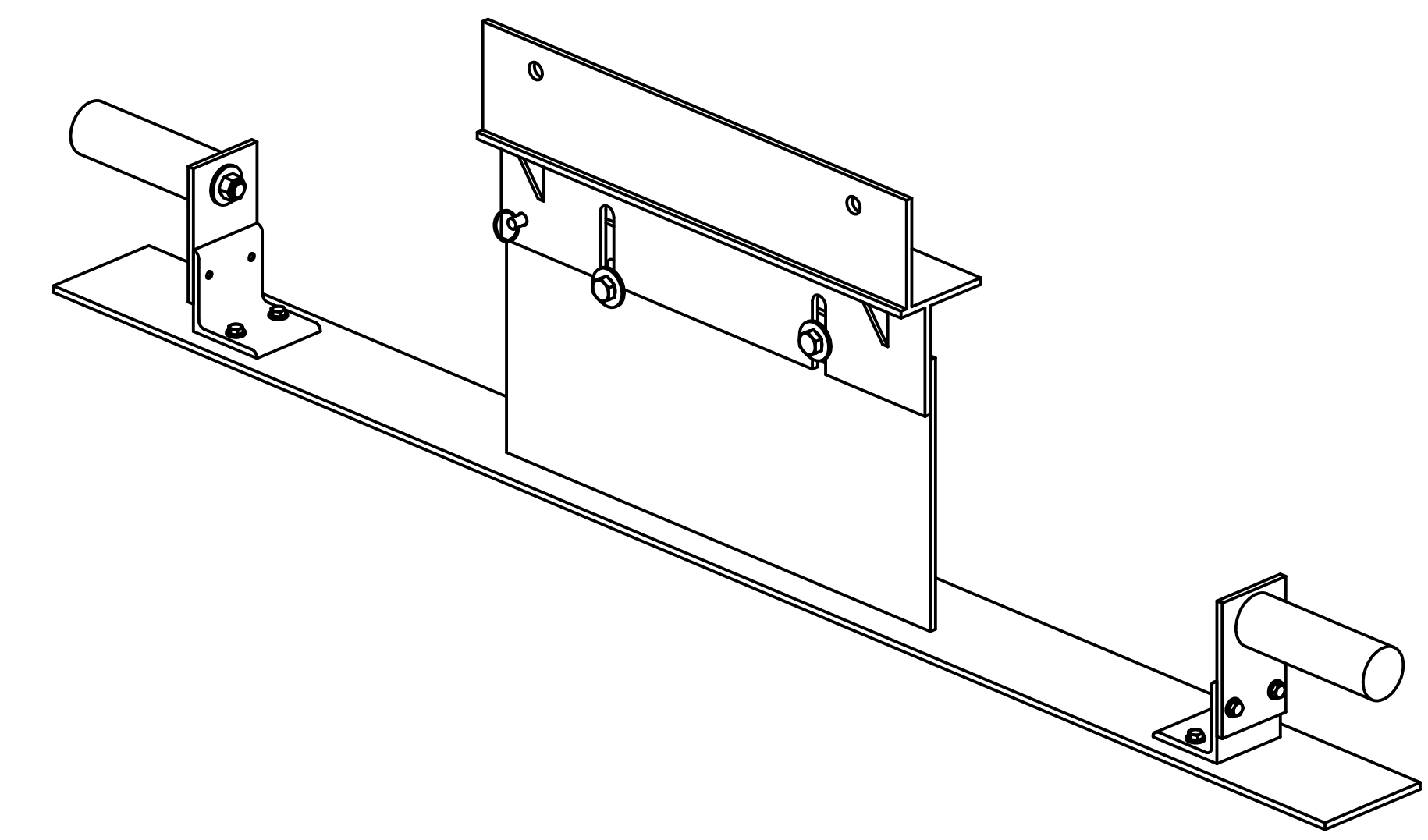
C

B

B

A

A



ITEM NO.	QTY.	PART NO.	DESCRIPTION
1	1	D972921-1	HAM CROSSBEAM SPACER BASE
2	1	D972922-1	HAM CROSSBEAM SPACER SUPPORT
3	2	D972923-1	HAM CROSSBEAM SPACER BRACKET #1
4	2	D972924-1	HAM CROSSBEAM SPACER BRACKET #2
5	2	1.340-A49-S53	CANTILEVER ROLLER, 1.9 O.D. X 5.0, INTERROLL CORP.
6	2	STD HARDWARE	SST HEX NUT, 1/2-13 UNC-2B
7	4	STD HARDWARE	WASHER, SST 1/2 FLAT
8	8	STD HARDWARE	HEX HEAD SST SCREW, 1/4-20 UNC-2A X .50 LONG
9	8	STD HARDWARE	WASHER, SST 1/4 FLAT
10	2	STD HARDWARE	HEX HEAD SST BOLT, 1/2-13 UNC-2A X .75 LONG
11	1	McMASTER 923821A072	POSITIVE LOCKING PIN, 3/8 O.D. X 1.0 LONG

NOTES: UNLESS OTHERWISE SPECIFIED
 1. ASSEMBLY WEIGHS 34.5 Lbs.

PARTS LIST				HYTEC, INC	
UNLESS OTHERWISE SPECIFIED: DIMENSIONS ARE IN INCHES -TOLERANCES-		CAD GENERATED DRAWING, DO NOT MANUALLY UPDATE DO NOT SCALE DRAWING		TITLE HAM CROSSBEAM PIPING PLATFORM SPACER ASSEMBLY	
DECIMALS .XX = +/- .03 .XXX = +/- .010	ANGULAR = +/- .30° SURFACE FINISH = 250	SIGNATURE	DATE	DWG. NO.	SIZE SHEET NO.
FINISH		DESIGNED W. K. MILLER	12/12/97	D972879	D 1 of 1
		DRAWN W. K. MILLER	12/12/97		
PART NO. D972879-1		CHECKED HARRY SALAZAR	2/2/98	SCALE 1/5	REVISION
		ENGR. T. THOMPSON	2/2/98		
		APPROVED T. THOMPSON	2/2/98		

8 7 6 5 4 3 2 1