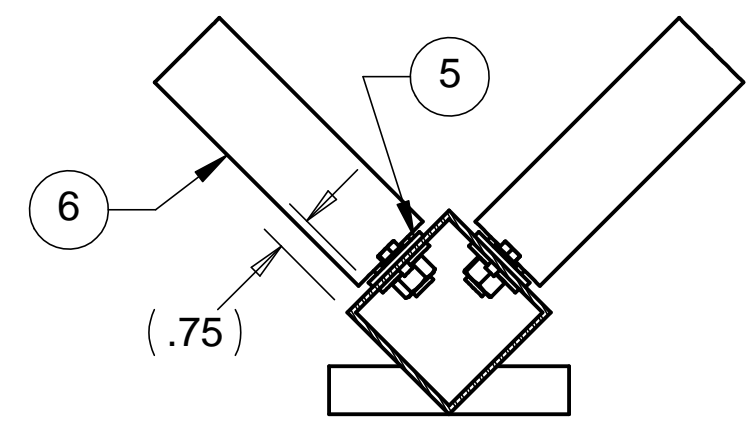


8 7 6 5 4 3 2 1

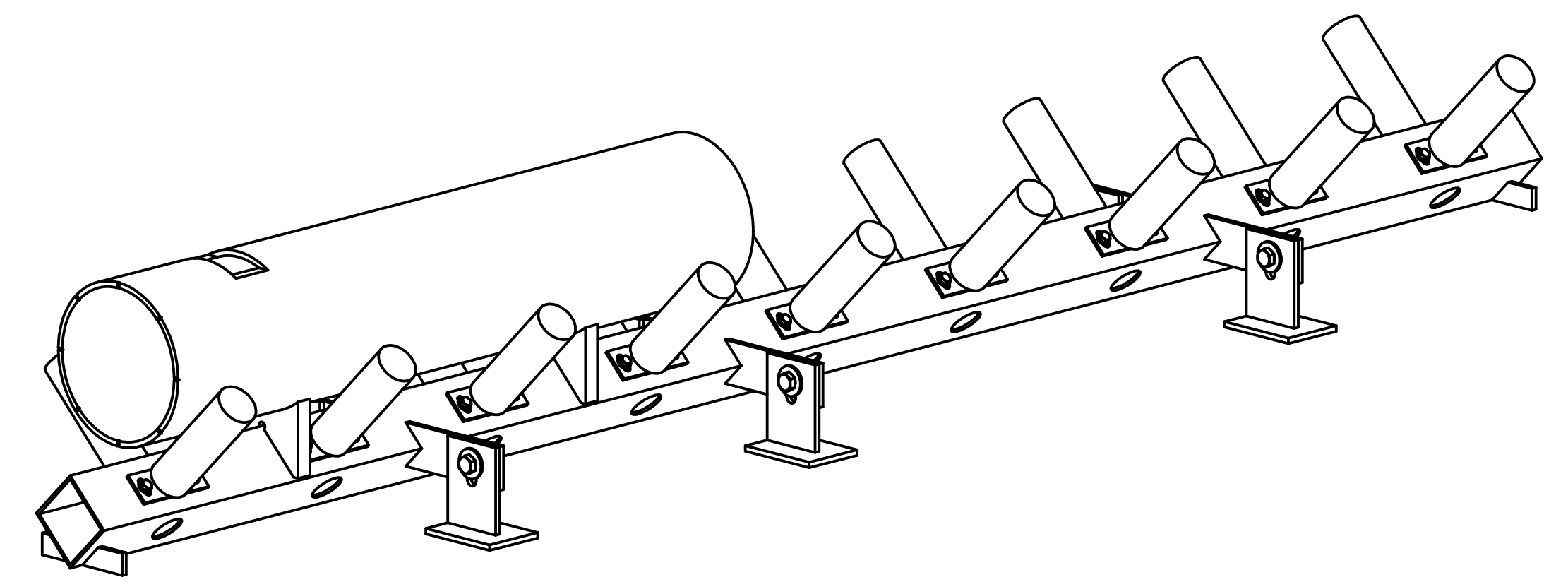
| REVISIONS | | | |
|-----------|-------------------|---------|----------|
| REV. | DESCRIPTION | DATE | APPROVED |
| A | ADDED SCRIBE NOTE | 3-13-98 | WKM |
| | | | |

D

D

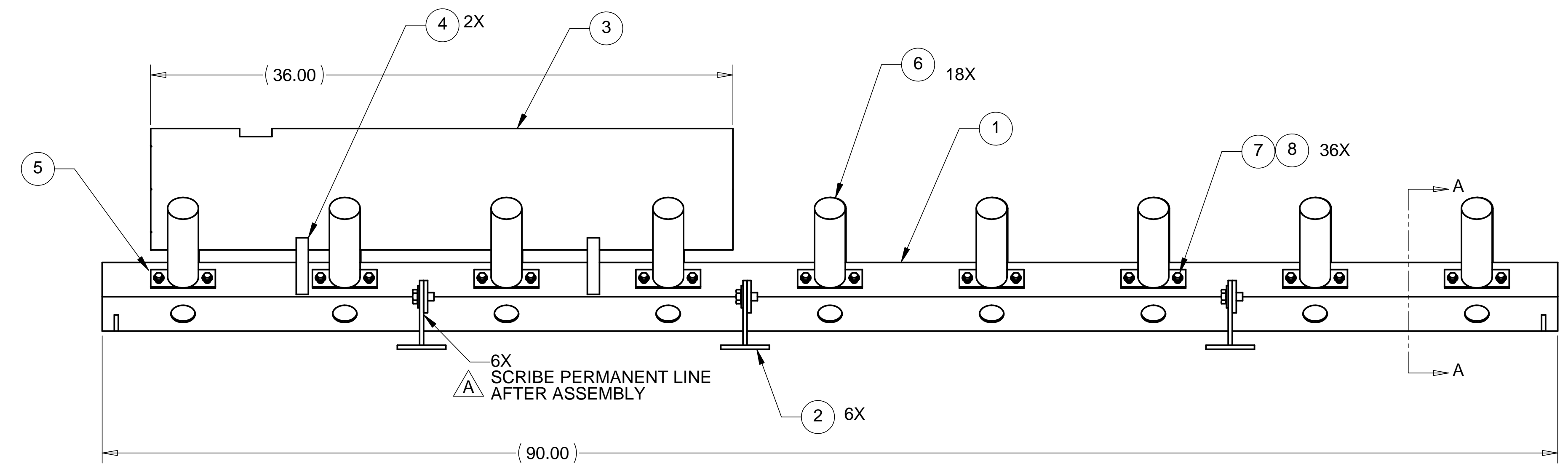
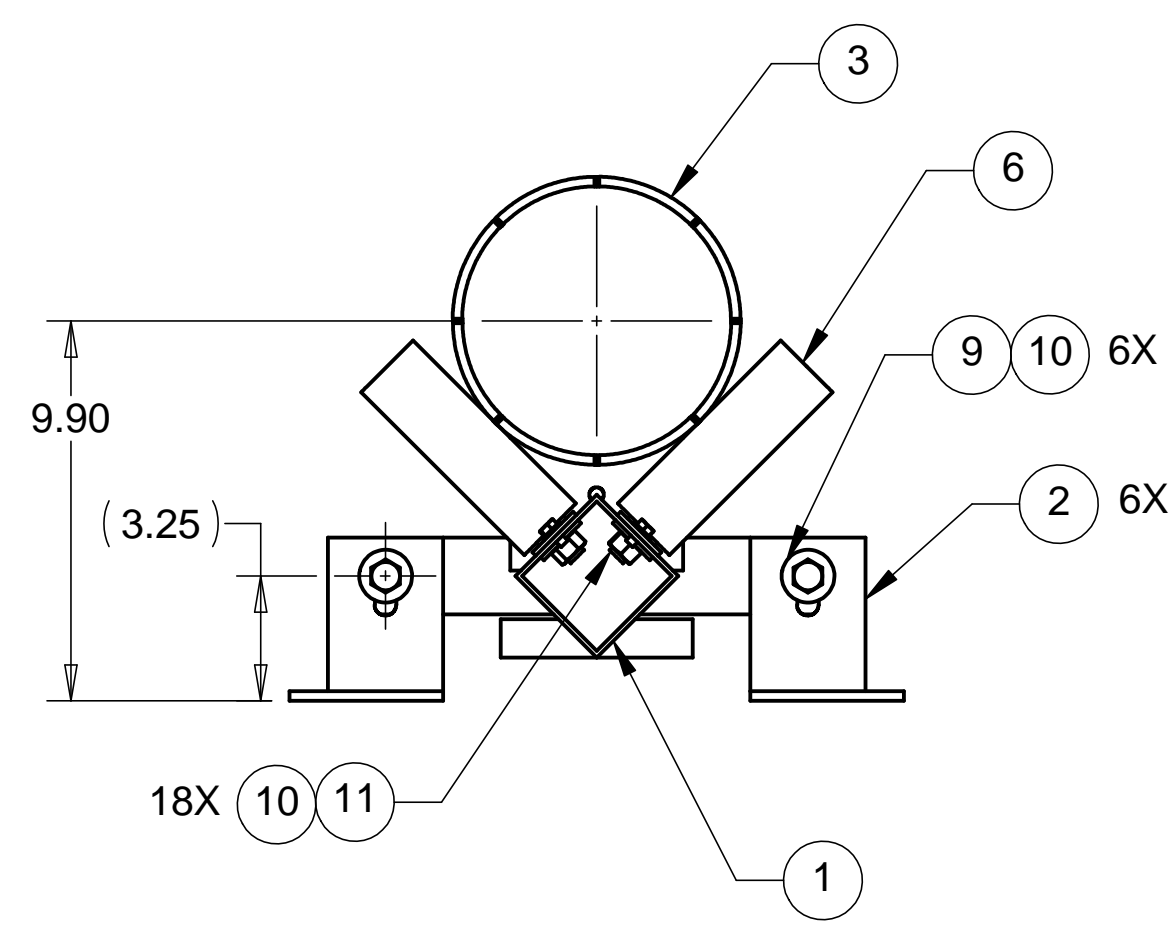


SECTION A-A
SCALE 1 : 4



C

C



B

B

A

A

NOTES: UNLESS OTHERWISE SPECIFIED
1. HAM ROLLER ASSEMBLY WITHOUT JIGS WEIGHS 62.2 Lbs.

| ITEM NO. | QTY. | PART NO. | DESCRIPTION |
|----------|------|---------------|--|
| 1 | 1 | D972931-1 | HAM ROLLER SYSTEM BEAM |
| 2 | 6 | D972932-1 | HAM ROLLER SYSTEM FOOT |
| 3 | 1 | D972933-1 | HAM ROLLER SYSTEM TUBE JIG |
| 4 | 2 | D972934-1 | HAM ROLLER SYSTEM TUBE SPACING JIG |
| 5 | 18 | D972935-1 | HAM ROLLER SYSTEM ROLLER MOUNTING PLATE |
| 6 | 18 | 1.340-A49-S53 | ROLLER, 1.90 O.D. X 5.0 RL, INTERROLL CORP. |
| 7 | 36 | STD HARDWARE | HEX HEAD SST SCREW, 1/4-28 UNF-2A X .50 LONG |
| 8 | 36 | STD HARDWARE | WASHER, SST 1/4 FLAT |
| 9 | 6 | STD HARDWARE | HEX HEAD SST BOLT, 1/2-13 UNC-2A X .75 LONG |
| 10 | 24 | STD HARDWARE | WASHER, SST 1/2 FLAT |
| 11 | 18 | STD HARDWARE | SST HEX NUT, 1/2-13 UNC-2B |

PARTS LIST

| | | | | | |
|---|--|--|------|-------------------|----------------------------|
| UNLESS OTHERWISE SPECIFIED: DIMENSIONS ARE IN INCHES -TOLERANCES- | | CAD GENERATED DRAWING, DO NOT MANUALLY UPDATE DO NOT SCALE DRAWING | | HYTEC, INC | |
| DECIMALS .XX = +/- .05 .XXX = +/- .010 | ANGULAR = +/- .30° SURFACE FINISH = 250 | TITLE HAM ROLLER SYSTEM ASSEMBLY | | | |
| FINISH | DESIGNED | W. K. MILLER | DATE | 12/12/97 | DWG. NO. D972884 |
| PART NO. D972884-1 | DRAWN | W. K. MILLER | DATE | 12/12/97 | |
| | CHECKED | HARRY SALAZAR | DATE | 2/2/98 | |
| | ENGR. | T. THOMPSON | DATE | 2/2/98 | |
| | APPROVED | T. THOMPSON | DATE | 2/2/98 | SCALE 1/5 |
| | | | | | REVISION A |

8 7 6 5 4 3 2 1