

8 7 6 5 4 3 2 1

REVISIONS			
REV.	DESCRIPTION	DATE	APPROVED

D

D

C

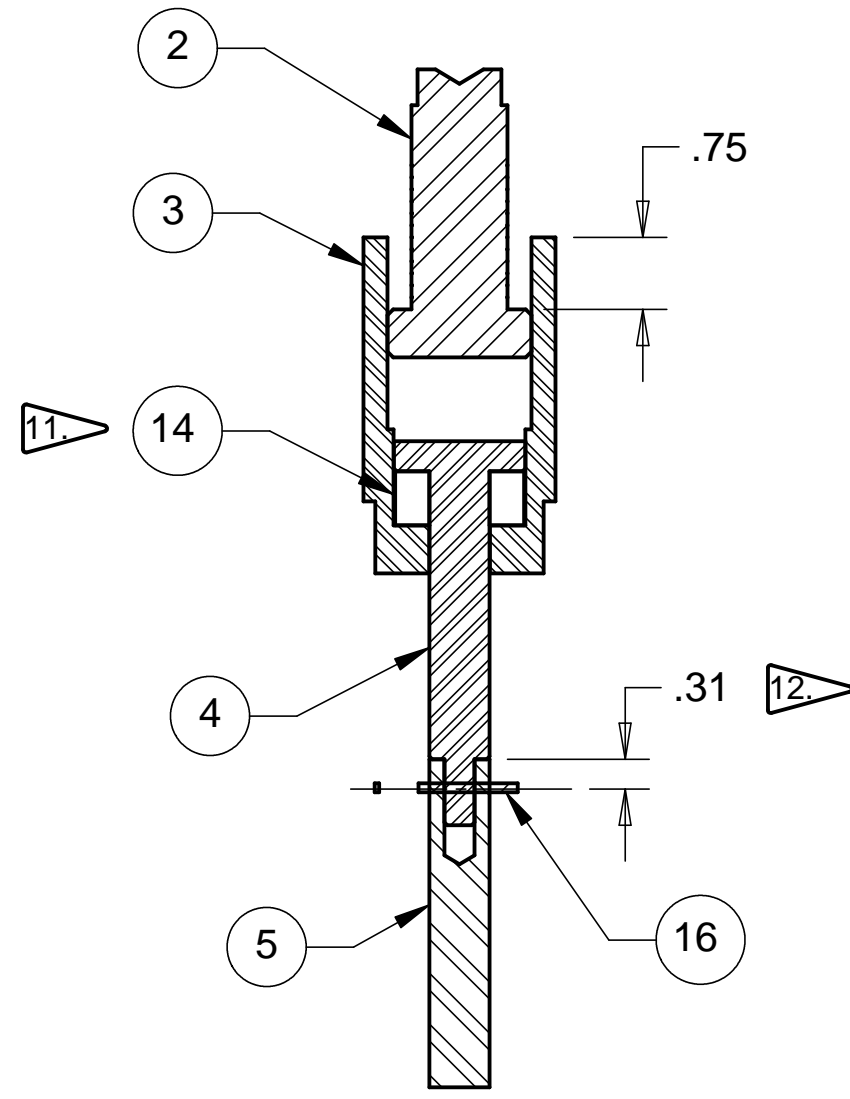
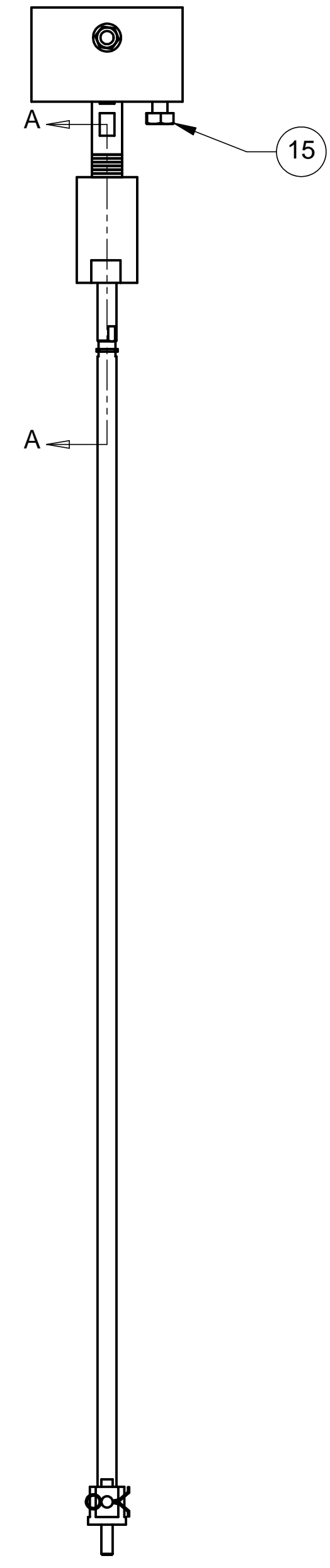
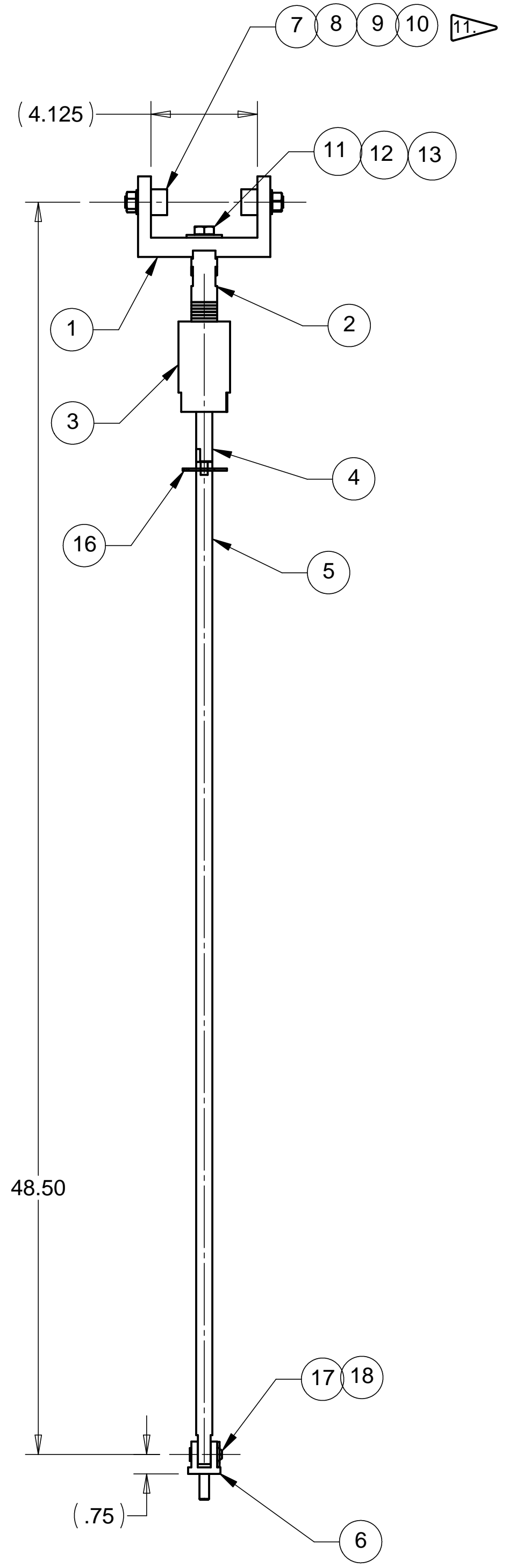
C

B

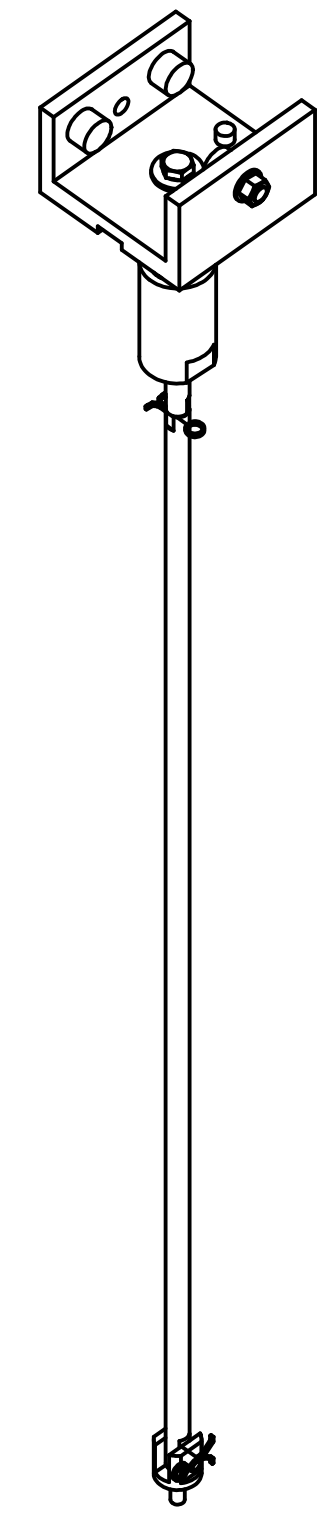
B

A

A



SECTION A-A



NOTES: UNLESS OTHERWISE SPECIFIED

1. ALL DIMENSIONS IN INCHES
2. DIMENSIONS AND TOLERANCING PER ASME Y14.5M-1994
3. SURFACE TEXTURE PER ANSI/ASME B 46.1-1985
4. REMOVE ALL BURRS AND BREAK SHARP EDGES TO A MAXIMUM OF .015
5. ALL INSIDE CORNERS TO BE .015 RADIUS MAX
6. COUNTERSINK 82 DEGREES ALL TAPPED HOLES TO MAJOR DIAMETER
7. COUNTERSINK 82 DEGREES APPROXIMATELY .015 DEEP ALL DRILLED HOLES
8. PARTS TO BE THOROUGHLY CLEANED TO REMOVE ALL OIL, GREASE, DIRT AND CHIPS
9. PART NUMBER (DRAWING NO. PLUS DASH NO. PLUS SERIAL NO.) TO BE CLEARLY MARKED ON THE PART ITSELF.
10. PART WEIGHS 15.4 Lbs.

- 11 USE A VAPOR DEGREASER TO REMOVE ALL GREASE FROM CAM FOLLOWERS (ITEM 7).
- 12 DRILL AND COTTER PIN AFTER BOLTING CONNECTION TOGETHER.
- 13 STAMP ALL PIECES OF THE ASSEMBLY WITH AN ASSEMBLY SERIAL NUMBER.

ITEM NO.	QTY.	PART NO.	DESCRIPTION
1	1	D972946-1	RAIL SYSTEM TROLLEY
2	1	D972949-1	RAIL SYSTEM TROLLEY LINK #1
3	1	D972950-1	RAIL SYSTEM TROLLEY LINK #2
4	1	D972951-1	RAIL SYSTEM TROLLEY LINK #3
5	1	D972952-1	RAIL SYSTEM TROLLEY LINK #4
6	1	D972953-1	RAIL SYSTEM TROLLEY LINK #5
7	3	RBC S-32-LW	CAM FOLLOWER, 1.0 O.D. X .625, UNSEALED, MOORE BEARING
8	3	STD HARDWARE	WASHER, 7/16 FLAT
9	3	STD HARDWARE	WASHER, 7/16 LOCK
10	3	STD HARDWARE	HEX NUT, 7/16-20 UNC-2B
11	1	STD HARDWARE	WASHER, 1/2 FLAT
12	1	STD HARDWARE	WASHER, 1/2 LOCK
13	1	STD HARDWARE	HEX HEAD BOLT, 1/2-13 UNC-2A X 1.0 LONG
14	1	McMASTER 60715K12	THRUST BEARING, 1 11/32 O.D. X .562 THK
15	1	STD HARDWARE	HEX HEAD BOLT, 1/2-13 UNC-2A X 1.5 LONG
16	1	McMASTER 98355A030	COTTER PIN, 1/16" X 1.0 LONG
17	1	McMASTER 92390A216	CLEVIS PIN, 5/16 DIA. X 1.25 LONG
18	1	McMASTER 98355A130	COTTER PIN, 1/8" X .75 LONG

PARTS LIST

UNLESS OTHERWISE SPECIFIED: DIMENSIONS ARE IN INCHES -TOLERANCES-		CAD GENERATED DRAWING, DO NOT MANUALLY UPDATE DO NOT SCALE DRAWING		<b>HYTEC, INC</b> TITLE <b>HAM RAIL SYSTEM          TROLLEY AND LINKAGE          ASSEMBLY</b>		
DECIMALS .XX = +/- .03 .XXX = +/- .010	ANGULAR = +/- 30' SURFACE FINISH = 250	SIGNATURE	DATE			
FINISH	DESIGNED	W. K. MILLER	1/18/98	DWG. NO.	SIZE	
PART NO. <b>D972888-1</b>	DRAWN	W. K. MILLER	1/18/98	<b>D972888</b>	D	
	CHECKED	HARRY SALAZAR	2/2/98			SHEET NO. <b>1 of 1</b>
	ENGR.	T. THOMPSON	2/2/98			
APPROVED	T. THOMPSON	2/2/98	SCALE	1/4	REVISION	

8 7 6 5 4 3 2 1