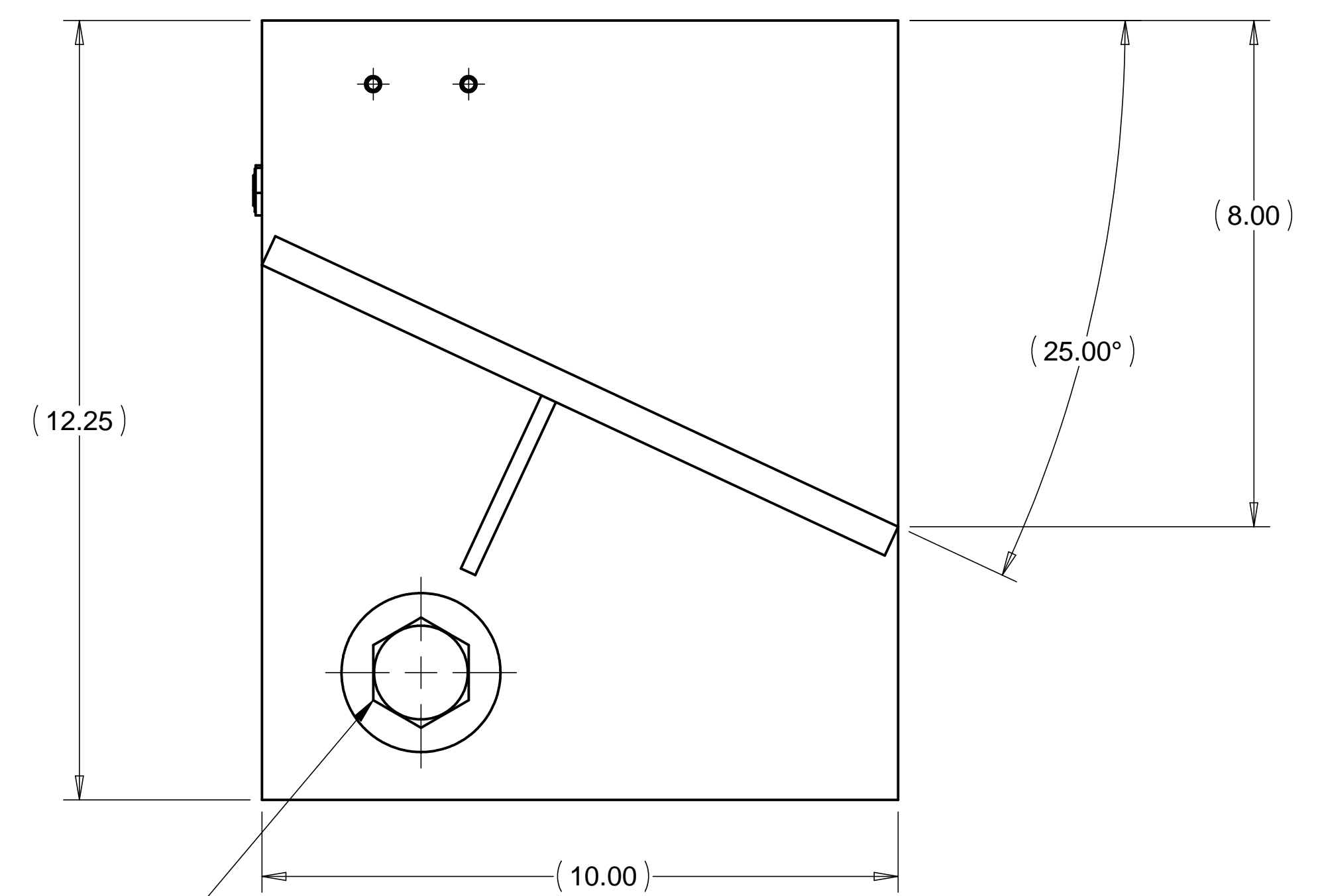
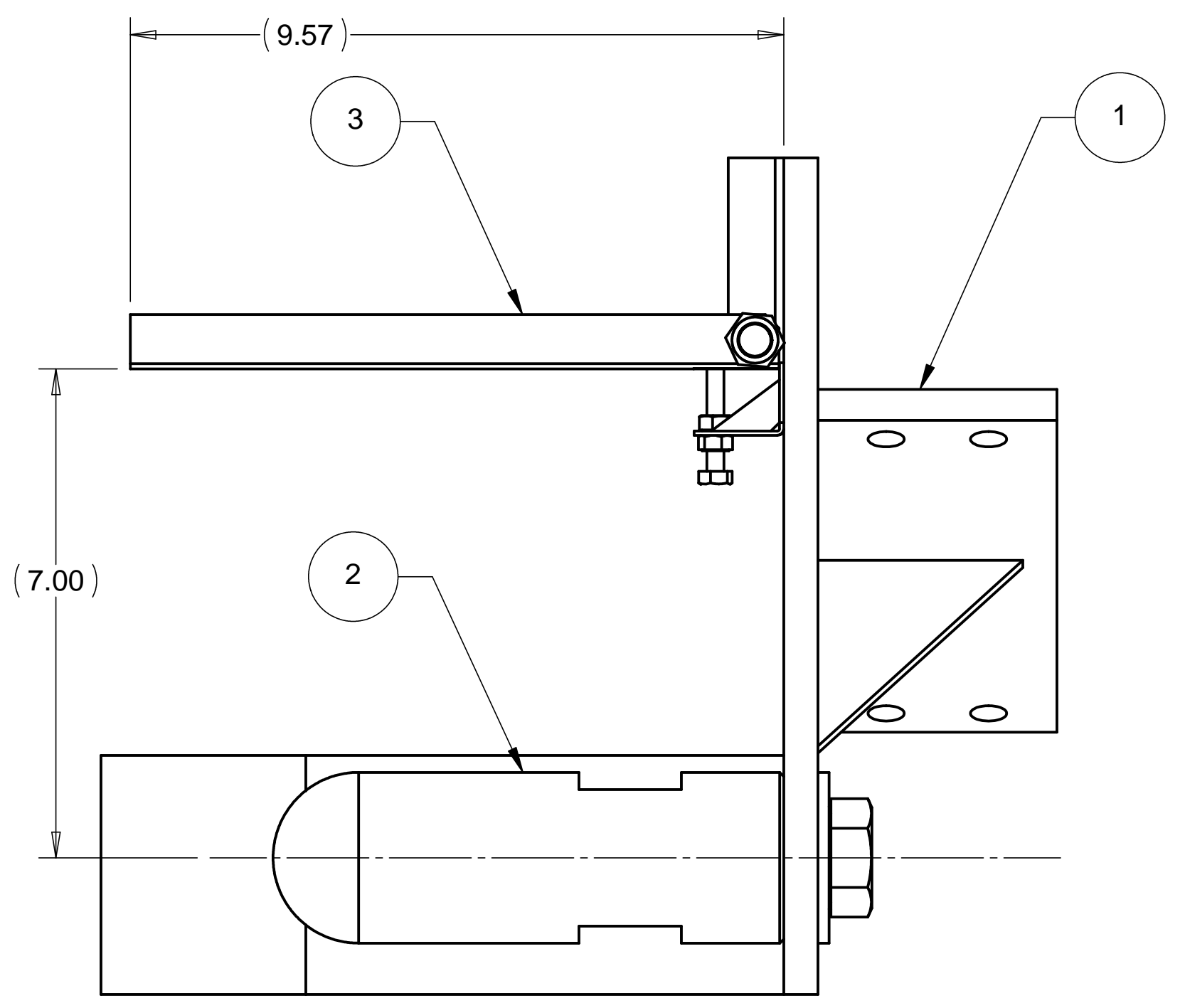
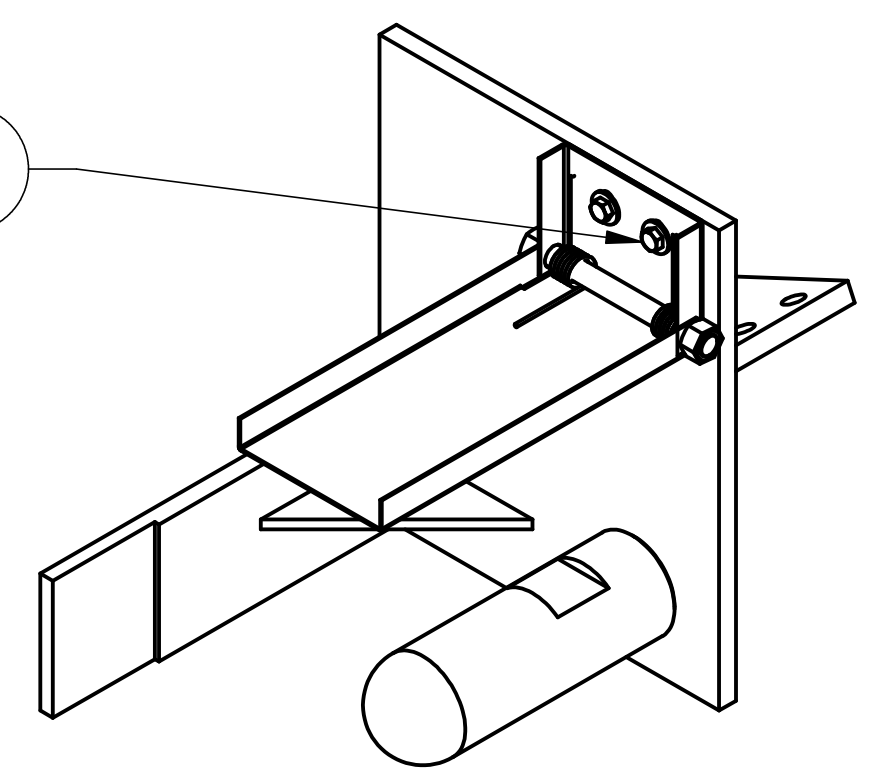


8 7 6 5 4 3 2 1

REVISIONS			
REV.	DESCRIPTION	DATE	APPROVED

2X 2X
7 6



5 4

WEIGHT: 39.28 lbs

ITEM NO.	QTY.	PART NO.	DESCRIPTION
1	1	D972958-1	HAM CENTERING JIG, LEFT SIDE
2	1	D972957-1	HAM CENTERING JIG, POINT CONTACT
3	1	D972891-1	HAM CENTERING JIG, Z-ELEVATION STAGE
4	1		BOLT, 1-8 UNC-2B X 1.25 LG., STAINLESS STEEL
5	1		WASHER, REGULAR 1.00 DIA., STAINLESS STEEL
6	2		SCREW, HEX HD .250-20 UNC-2B X .50 LG., STAINLESS STEEL
7	2		WASHER, REGULAR .250 DIA., STAINLESS STEEL

PARTS LIST

UNLESS OTHERWISE SPECIFIED: DIMENSIONS ARE IN INCHES -TOLERANCES-		CAD GENERATED DRAWING, DO NOT MANUALLY UPDATE DO NOT SCALE DRAWING		HYTEC, INC TITLE HAM CENTERING JIG LEFT SIDE SUB-ASSEMBLY	
DECIMALS .X = +/- .1 .XX = +/- .03 .XXX = +/- .010	ANGULAR = +/- 30' SURFACE FINISH = 250	SIGNATURE	DATE		
FINISH		DESIGNED ROGER L. SMITH	1-21-98	DWG. NO.	SIZE
		DRAWN GERALD BUSTOS	1-21-98	D972889	D
PART NO. D972889-1		CHECKED HARRY SALAZAR	---	SHEET NO.	1 of 1
		ENGR. T. THOMPSON	---	SCALE	1/2
		APPROVED T. THOMPSON	---	REVISION	

8 7 6 5 4 3 2 1

D
C
B
A

D
C
B
A