

8

7

6

5

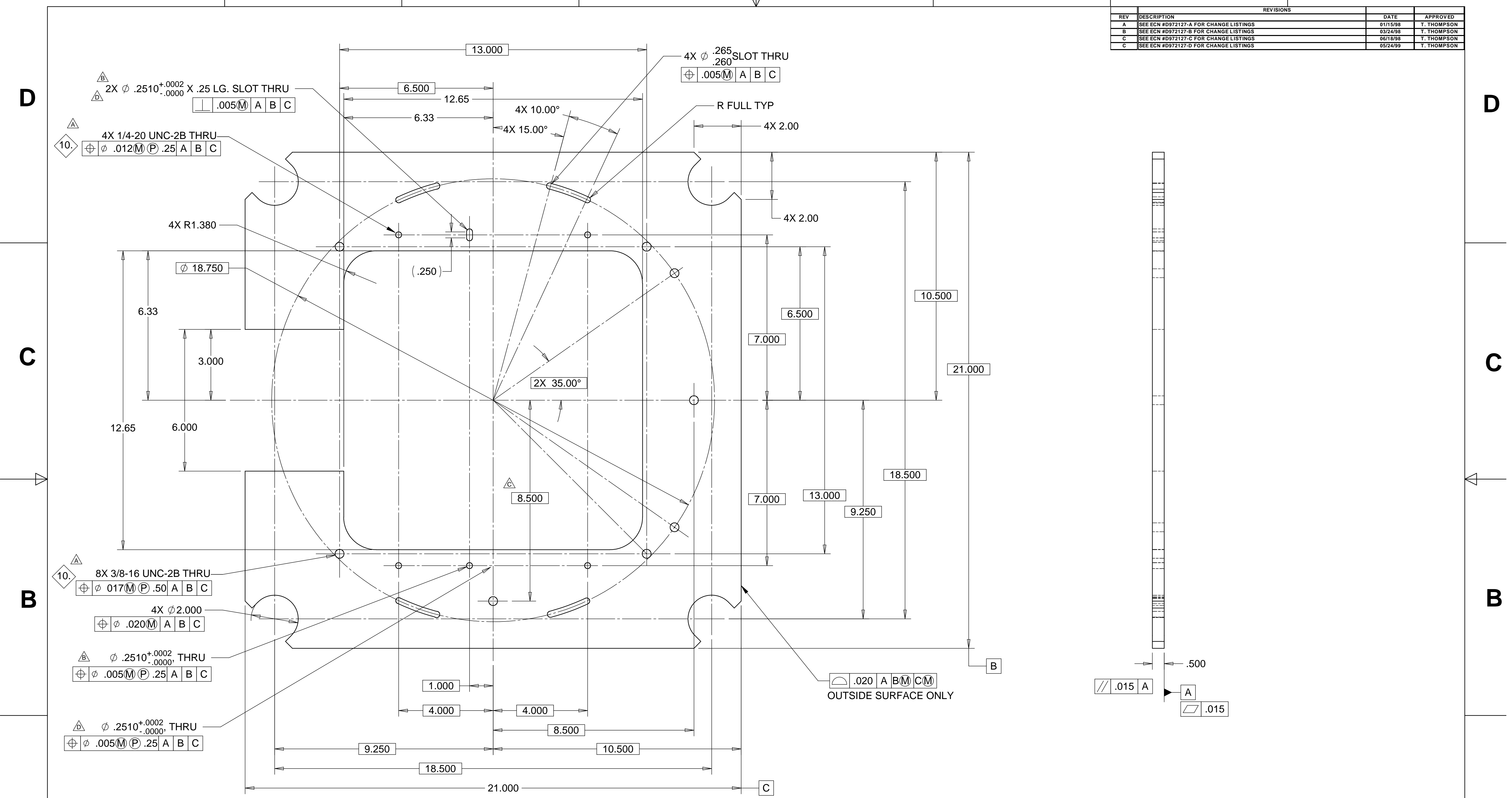
4

3

2

1

REVISIONS			
REV	DESCRIPTION	DATE	APPROVED
A	SEE ECN #D972127-A FOR CHANGE LISTINGS	01/15/98	T. THOMPSON
B	SEE ECN #D972127-B FOR CHANGE LISTINGS	03/24/98	T. THOMPSON
C	SEE ECN #D972127-C FOR CHANGE LISTINGS	06/18/98	T. THOMPSON
C	SEE ECN #D972127-D FOR CHANGE LISTINGS	05/24/99	T. THOMPSON



NOTES: UNLESS OTHERWISE SPECIFIED

- ALL DIMENSIONS IN INCHES
- DIMENSIONS AND TOLERANCING PER ASME Y14.5M-1994
- SURFACE TEXTURE PER ANSI/ASME B 46.1-1985
- REMOVE ALL BURRS AND BREAK SHARP EDGES TO A MAXIMUM OF .015
- ALL INSIDE CORNERS TO BE .015 RADIUS MAX
- COUNTERSINK 82 DEGREES ALL TAPPED HOLES TO MAJOR DIAMETER
- COUNTERSINK 82 DEGREES APPROXIMATELY .03/.06 DEEP ALL DRILLED HOLES
- PARTS TO BE THOROUGHLY CLEANED TO REMOVE ALL OIL, GREASE, DIRT AND CHIPS
- PART NUMBER (DRAWING NO., DASH NO., REVISION NO., SERIAL NO.) TO BE CLEARLY MARKED ON THE PART ITSELF.
- INSTALL HELI-COIL INSERTS OR EQUIV. PER MANUFACTURES INSTALLATION INSTRUCTIONS.

- MATL: 6061-T6 ALUM TOOLING PLATE
- WEIGHT: 11.4 lbs.

PARTS LIST			
UNLESS OTHERWISE SPECIFIED: DIMENSIONS ARE IN INCHES -TOLERANCES-		CAD GENERATED DRAWING, DO NOT MANUALLY UPDATE DO NOT SCALE DRAWING	
DECIMALS .XX = +/- .05 .XXX = +/- .010		ANGULAR = +/- .30° SURFACE FINISH = 250	
FINISH	SIGNATURE	DATE	TITLE
	DESIGNED W. K. MILLER	11/09/97	HYTEC, INC
	DRAWN W. K. MILLER	11/09/97	
PART NO.	CHECKED HARRY SALAZAR	11/11/97	DWG. NO.
D972904-1	ENGR. T. THOMPSON	11/11/97	D972904
	APPROVED T. THOMPSON	11/12/97	SIZE D SHEET NO. 1 of 1
SCALE 1/2			REVISION D

8

7

6

5

4

3

2

1