

8 7 6 5 4 3 2 1

| REVISIONS | | | |
|-----------|------------------------------------|----------|-------------|
| REV. | DESCRIPTION | DATE | APPROVED |
| A | SEE ECN# D972905-A FOR CHANGE LIST | 04-16-98 | T. THOMPSON |

D

D

C

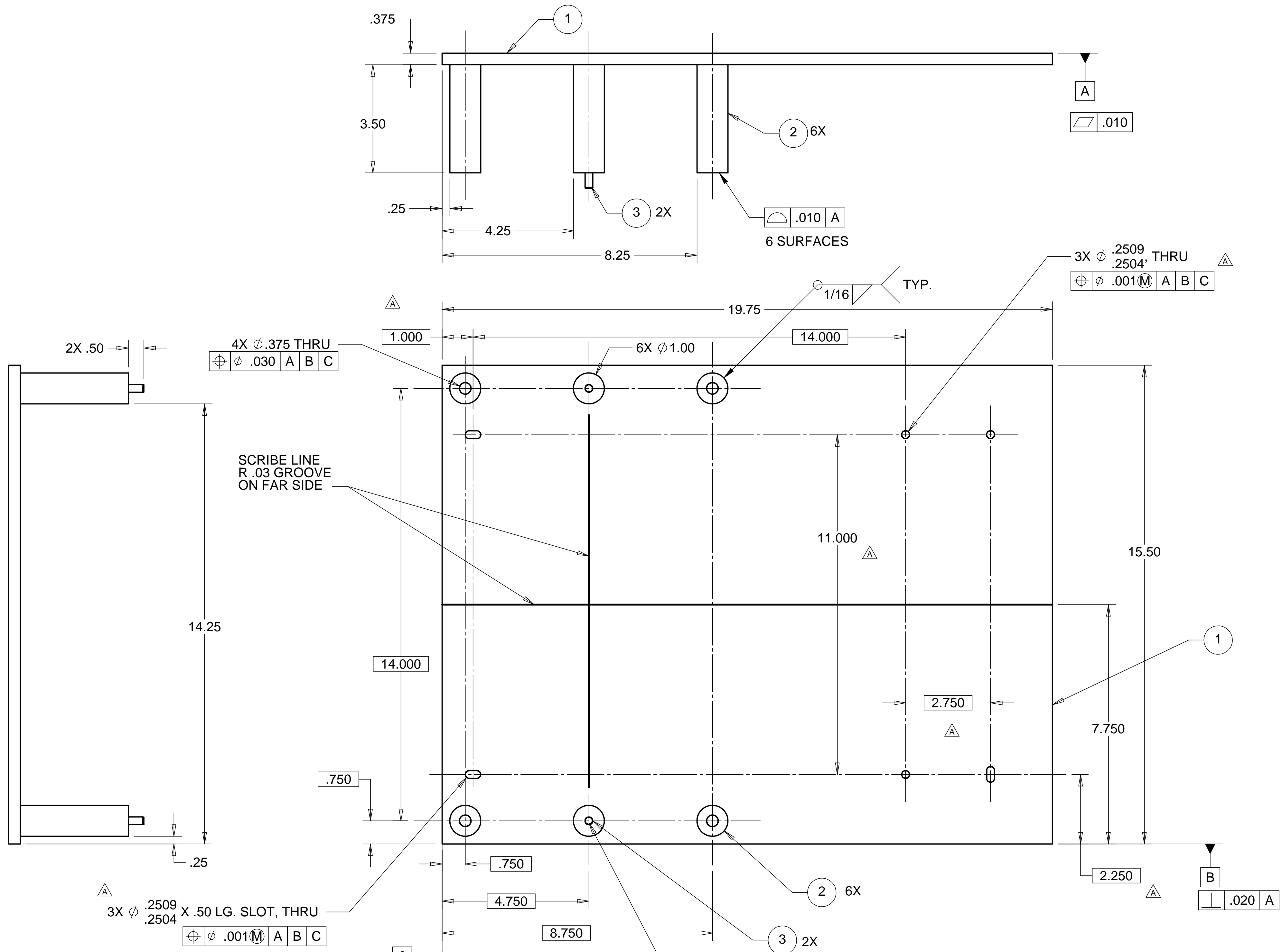
C

B

B

A

A



NOTES: UNLESS OTHERWISE SPECIFIED

- ALL DIMENSIONS IN INCHES
- DIMENSIONS AND TOLERANCING PER ASME Y14.5M-1994
- SURFACE TEXTURE PER ANSI/ASME B 46.1-1985
- REMOVE ALL BURRS AND BREAK SHARP EDGES TO A MAXIMUM OF .015
- ALL INSIDE CORNERS TO BE .015 RADIUS MAX
- COUNTERSINK 82 DEGREES ALL TAPPED HOLES TO MAJOR DIAMETER
- COUNTERSINK 82 DEGREES APPROXIMATELY .015 DEEP ALL DRILLED HOLES
- PARTS TO BE THOROUGHLY CLEANED TO REMOVE ALL OIL, GREASE, DIRT AND CHIPS
- PART NUMBER (DRAWING NO. PLUS DASH NO. PLUS SERIAL NO.) TO BE CLEARLY MARKED ON THE PART ITSELF.
- PART WEIGHS 37.5 Lbs.

| ITEM NO. | QTY. | DESCRIPTION | MATERIAL |
|----------|------|-------------------------------|-------------------|
| 1 | 1 | HAM OPTICS PLATE | 304 SST |
| 2 | 6 | SPACERS | 1.0 DIA SST ROUND |
| 3 | 2 | DOWEL PIN, 1/4 DIA X .75 LONG | McMASTER 98381A50 |

| PARTS LIST | | | | HYTEC, INC | |
|---|---|--|----------|--|----------------|
| UNLESS OTHERWISE SPECIFIED: DIMENSIONS ARE IN INCHES -TOLERANCES- | | CAD GENERATED DRAWING, DO NOT MANUALLY UPDATE DO NOT SCALE DRAWING | | TITLE HAM ADAPTER PLATE OPTICS PLATE | |
| DECIMALS .XX = +/- .03 .XXX = +/- .010 | ANGULAR = +/- 30' SURFACE FINISH = 250 | SIGNATURE | DATE | DWG. NO. | SIZE SHEET NO. |
| FINISH | | DESIGNED W. K. MILLER | 11/09/97 | D972905 | D 1 of 1 |
| PART NO. D972905-1 | | DRAWN W. K. MILLER | 11/09/97 | SCALE 1/2 | REVISION A |
| | | CHECKED HARRY SALAZAR | 11/11/97 | | |
| | | ENGR. T. THOMPSON | 11/11/97 | | |
| | | APPROVED T. THOMPSON | 11/12/97 | | |

8 7 6 5 4 3 2 1