

8 7 6 5 4 3 2 1

REVISIONS			
REV.	DESCRIPTION	DATE	APPROVED
A	REVISED GDT TOLERANCE	3-16-98	WKM

D

D

C

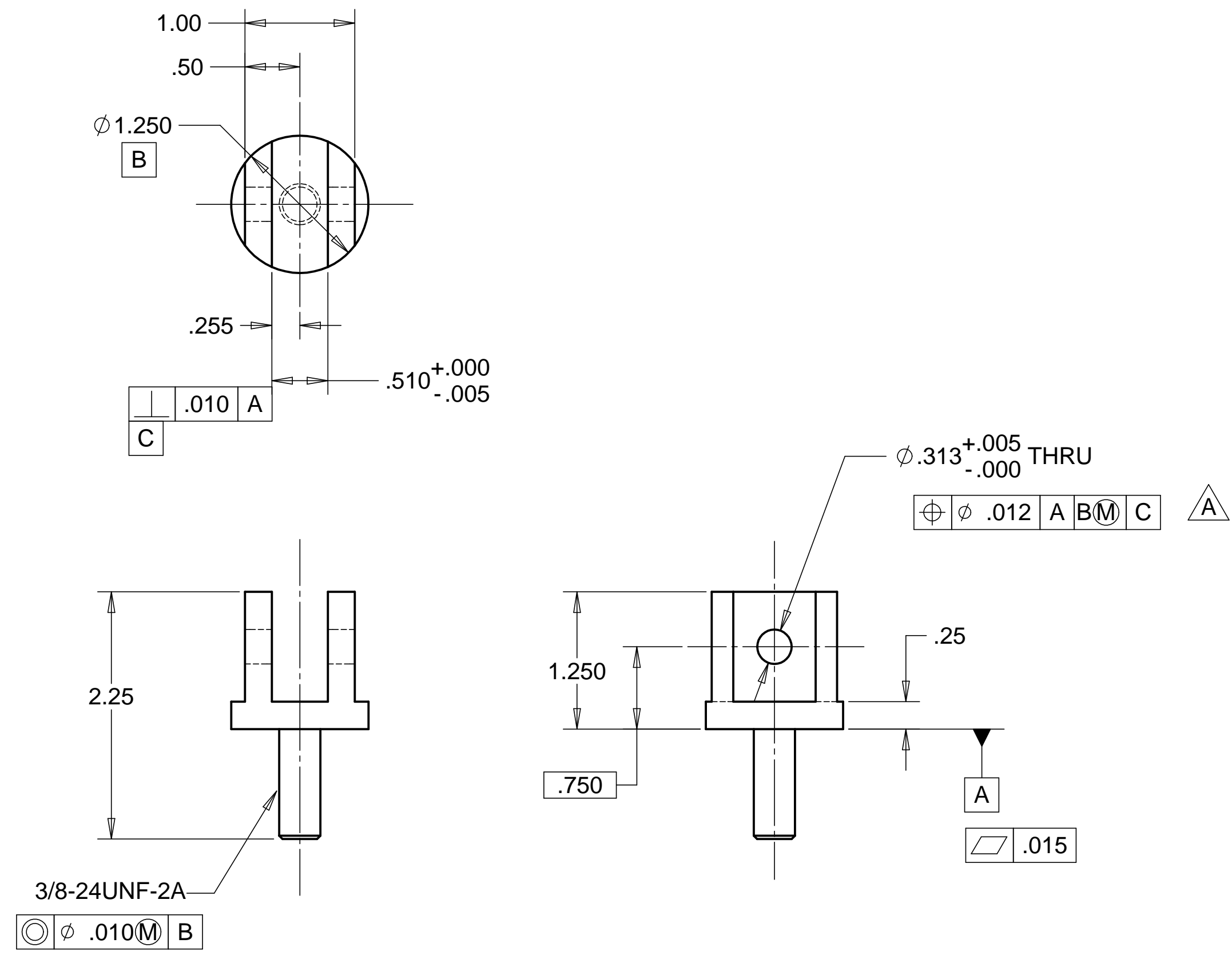
C

B

B

A

A



MATL: 303 SST

NOTES: UNLESS OTHERWISE SPECIFIED

- ALL DIMENSIONS IN INCHES
- DIMENSIONS AND TOLERANCING PER ASME Y14.5M-1994
- SURFACE TEXTURE PER ANSI/ASME B 46.1-1985
- REMOVE ALL BURRS AND BREAK SHARP EDGES TO A MAXIMUM OF .015
- ALL INSIDE CORNERS TO BE .015 RADIUS MAX
- COUNTERSINK 82 DEGREES ALL TAPPED HOLES TO MAJOR DIAMETER
- COUNTERSINK 82 DEGREES APPROXIMATELY .015 DEEP ALL DRILLED HOLES
- PARTS TO BE THOROUGHLY CLEANED TO REMOVE ALL OIL, GREASE, DIRT AND CHIPS
- PART NUMBER (DRAWING NO. PLUS DASH NO. PLUS SERIAL NO.) TO BE CLEARLY MARKED ON THE PART ITSELF.
- PART WEIGHS .25 Lbs.

PARTS LIST			
UNLESS OTHERWISE SPECIFIED: DIMENSIONS ARE IN INCHES -TOLERANCES-	CAD GENERATED DRAWING, DO NOT MANUALLY UPDATE DO NOT SCALE DRAWING		<b>HYTEC, INC</b> TITLE <b>LIGO - TROLLEY LINKAGE -            SUPPORT TUBE PLUG</b>
	DECIMALS .XX = +/- .03 .XXX = +/- .010	ANGULAR = +/- 30' SURFACE FINISH = 250	
FINISH	SIGNATURE	DATE	SIZE SHEET NO. D 1 of 1
PART NO. <b>D972953-1</b>	DESIGNED	ROGER L. SMITH	1/18/97
	DRAWN	ROGER L. SMITH	1/18/97
	CHECKED	HARRY SALAZAR	2/4/98
	ENGR.	T. THOMPSON	2/4/98
	APPROVED	T. THOMPSON	2/4/98
	SCALE	1/1	REVISION A

8 7 6 5 4 3 2 1