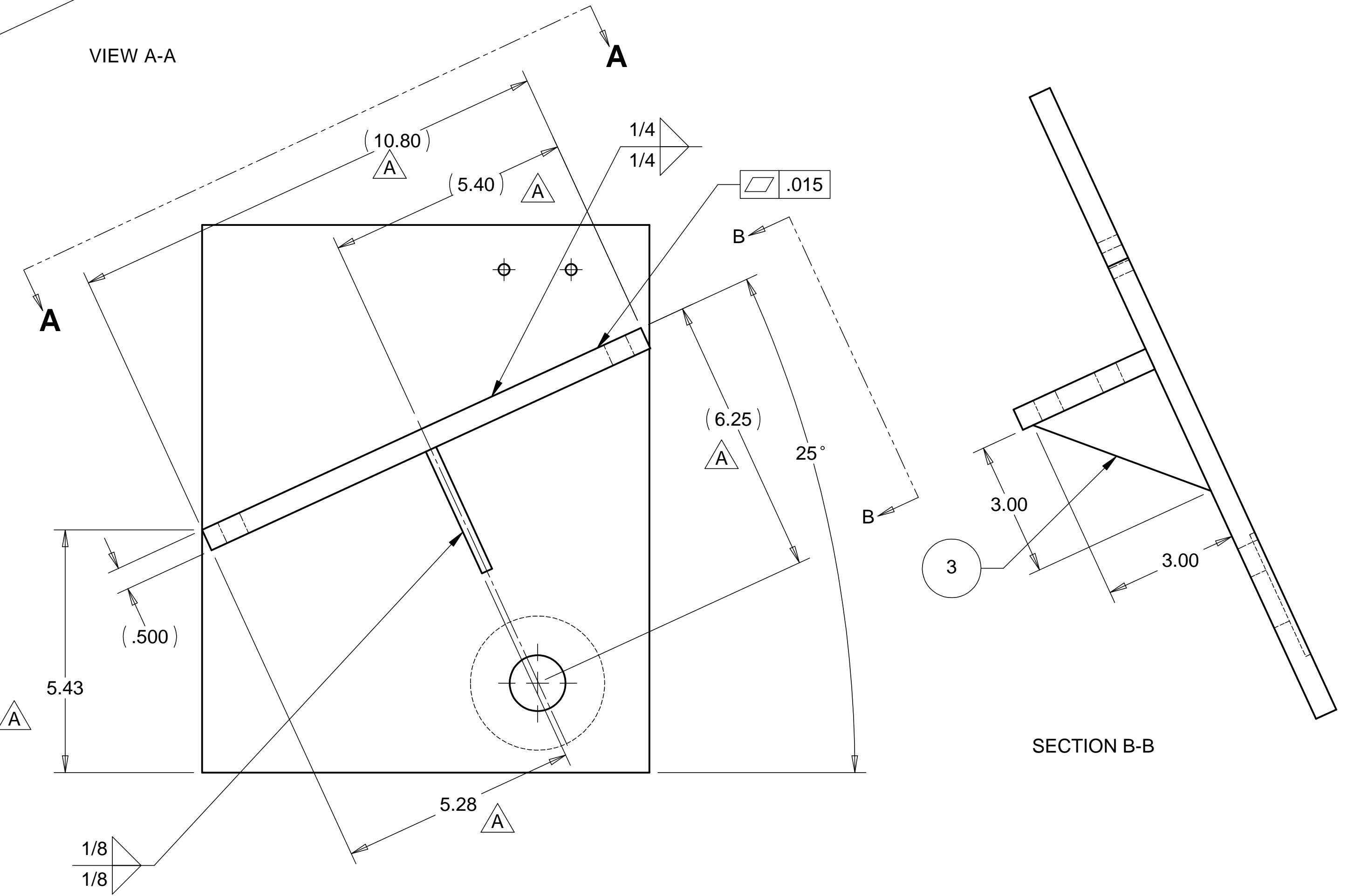
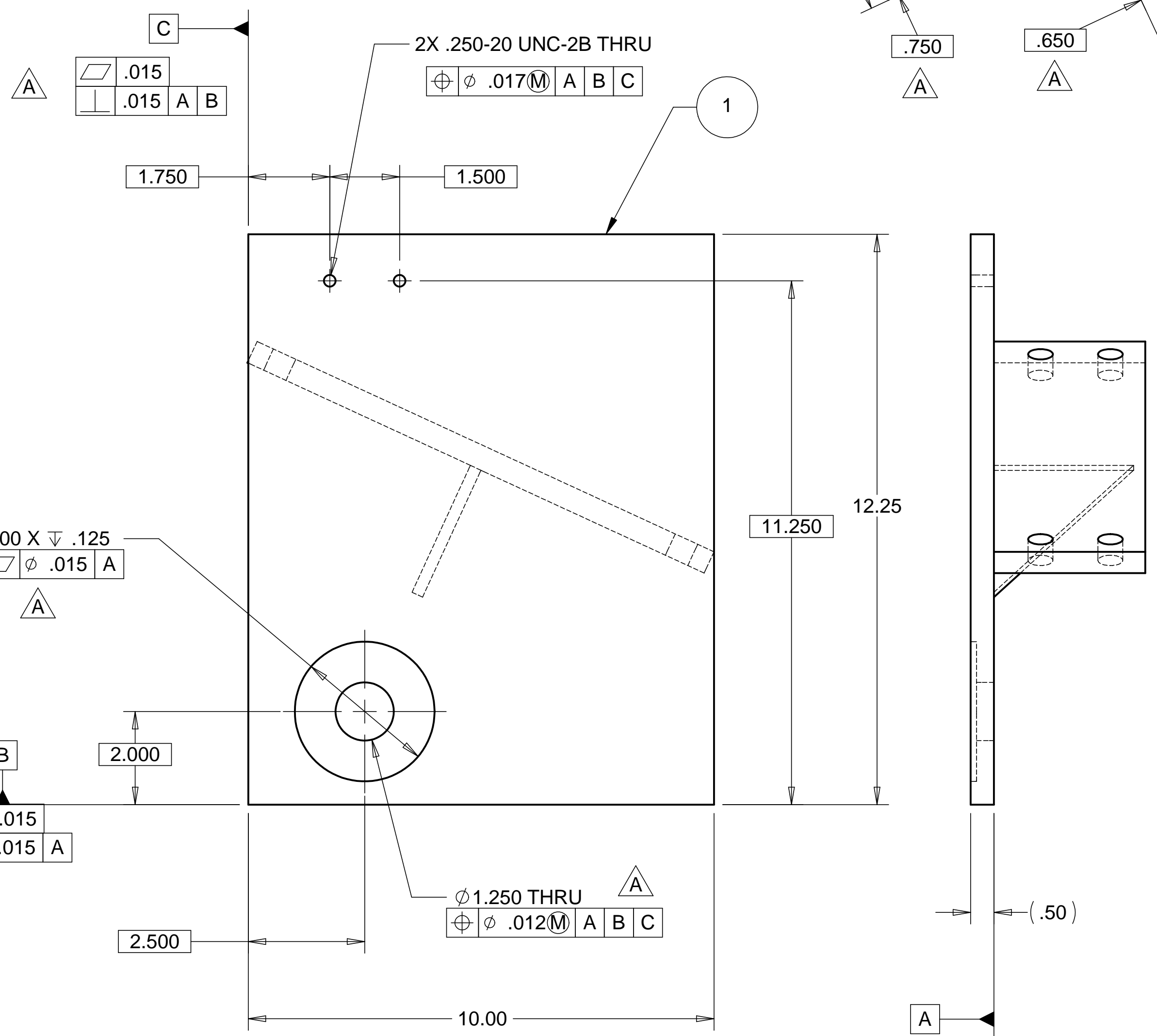
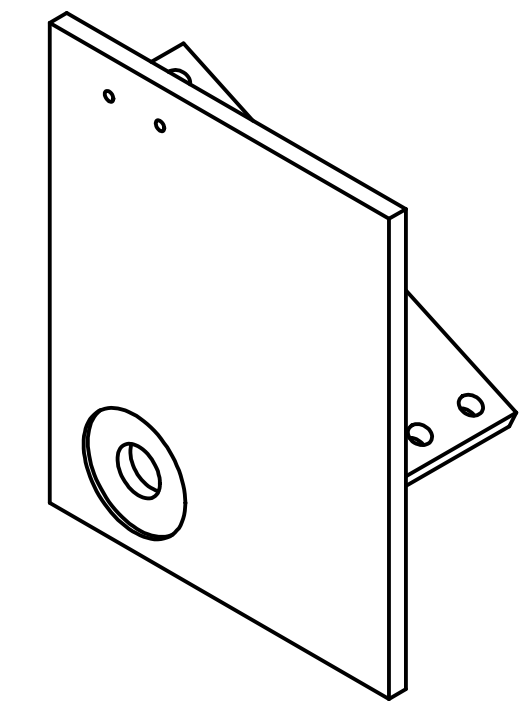
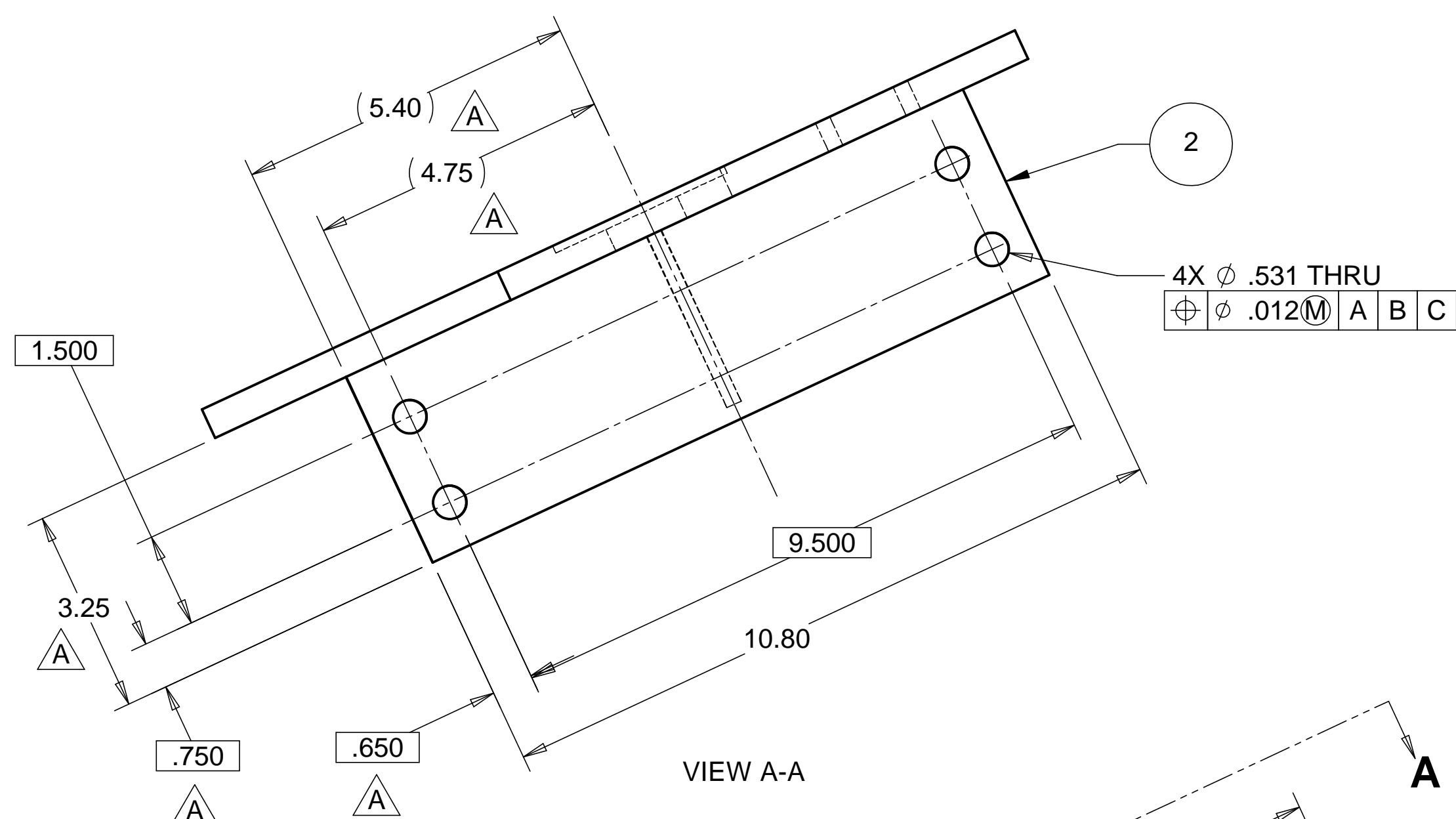


8 7 6 5 4 3 2 1

REV.	DESCRIPTION	DATE	APPROVED
A	SEE ECN FOR CHANGES	3-23-98	WKM



NOTES: UNLESS OTHERWISE SPECIFIED

- ALL DIMENSIONS IN INCHES
- DIMENSIONS AND TOLERANCING PER ANASI Y14.5M-1994
- SURFACE TEXTURE PER ANI/ASME B 46.1-1985
- REMOVE ALL BURRS AND BREAK SHARP EDGES TO A MAXIMUM OF .015
- ALL INSIDE CORNERS TO BE .015 RADIUS MAX
- COUNTERSINK 82 DEGREES ALL TAPPED HOLES TO MAJOR DIAMETER
- COUNTERSINK 82 DEGREES APPROXIMATELY .015 DEEP ALL DRILLED HOLES
- PARTS TO BE THOROUGHLY CLEANED TO REMOVE ALL OIL, GREASE, DIRT AND CHIPS
- PART NUMBER (DRAWING NO. PLUS DASH NO. PLUS SERIAL NO.) TO BE CLEARLY MARKED ON THE PART ITSELF.
- PART WEIGHS 23.2 Lbs.

ITEM NO.	QTY.	DESCRIPTION	MATERIAL
1	1	PLATE, .50 THK.	303 STAINLESS STEEL
2	1	PLATE, .50 THK.	303 STAINLESS STEEL
3	1	PLATE, .25 THK.	303 STAINLESS STEEL

PARTS LIST				HYTEC, INC	
UNLESS OTHERWISE SPECIFIED: DIMENSIONS ARE IN INCHES -TOLERANCES-				TITLE	
DECIMALS: X = +/- .1, XX = +/- .03, XXX = +/- .010				HAM CENTERING JIG RIGHT SIDE WELDMENT	
ANGULAR = +/- 30'				DWG. NO.	
SURFACE FINISH = 250				D972959	
FINISH		SIGNATURE		SIZE	
DESIGNED W. K. MILLER		DATE 1-21-98		SHEET NO.	
DRAWN GERALD BUSTOS		DATE 3-14-98		D 1 of 1	
CHECKED HARRY SALAZAR		DATE 3-14-98		REVISION	
ENGR. T. THOMPSON		DATE 3-14-98		A	
APPROVED T. THOMPSON		DATE 3-14-98		SCALE 1/2	
PART NO. D972959-1					

8 7 6 5 4 3 2 1