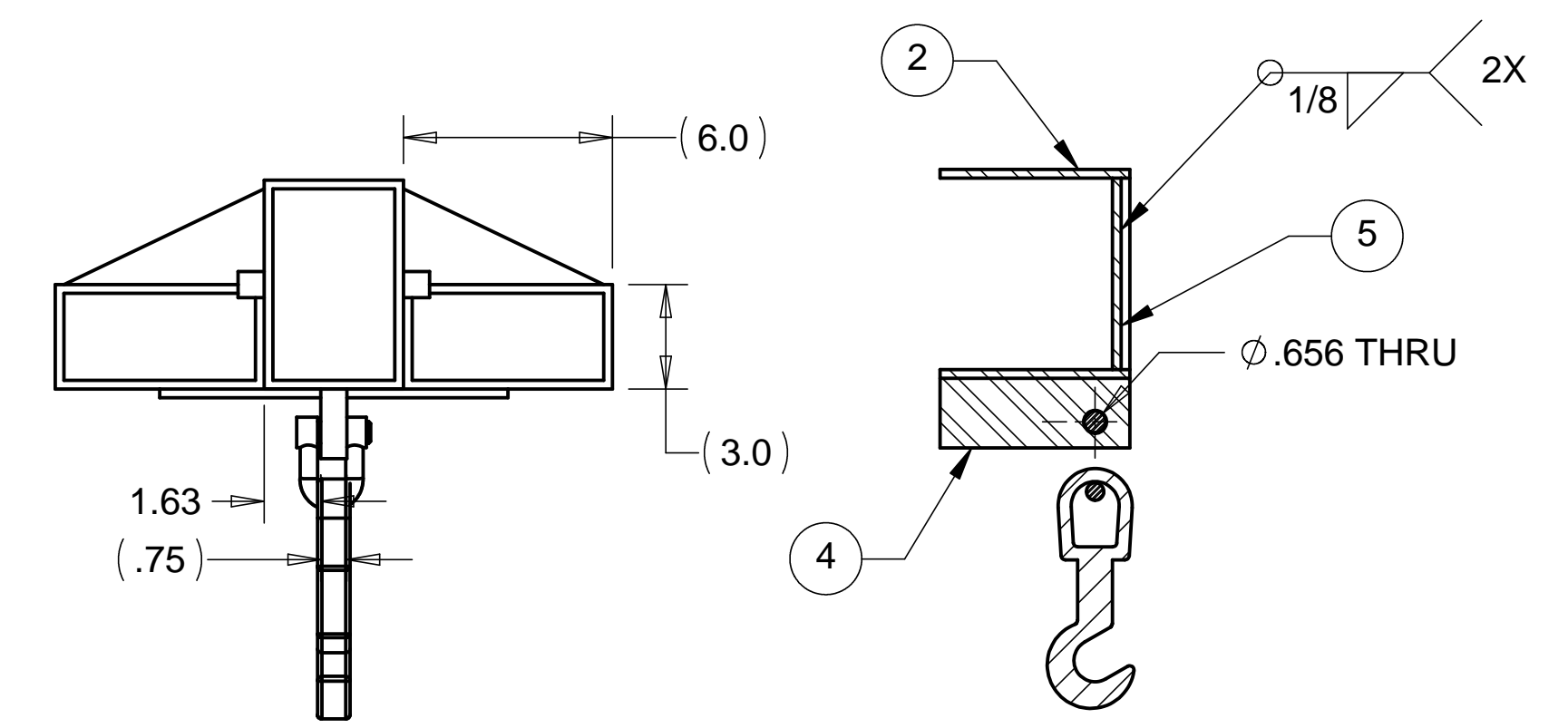
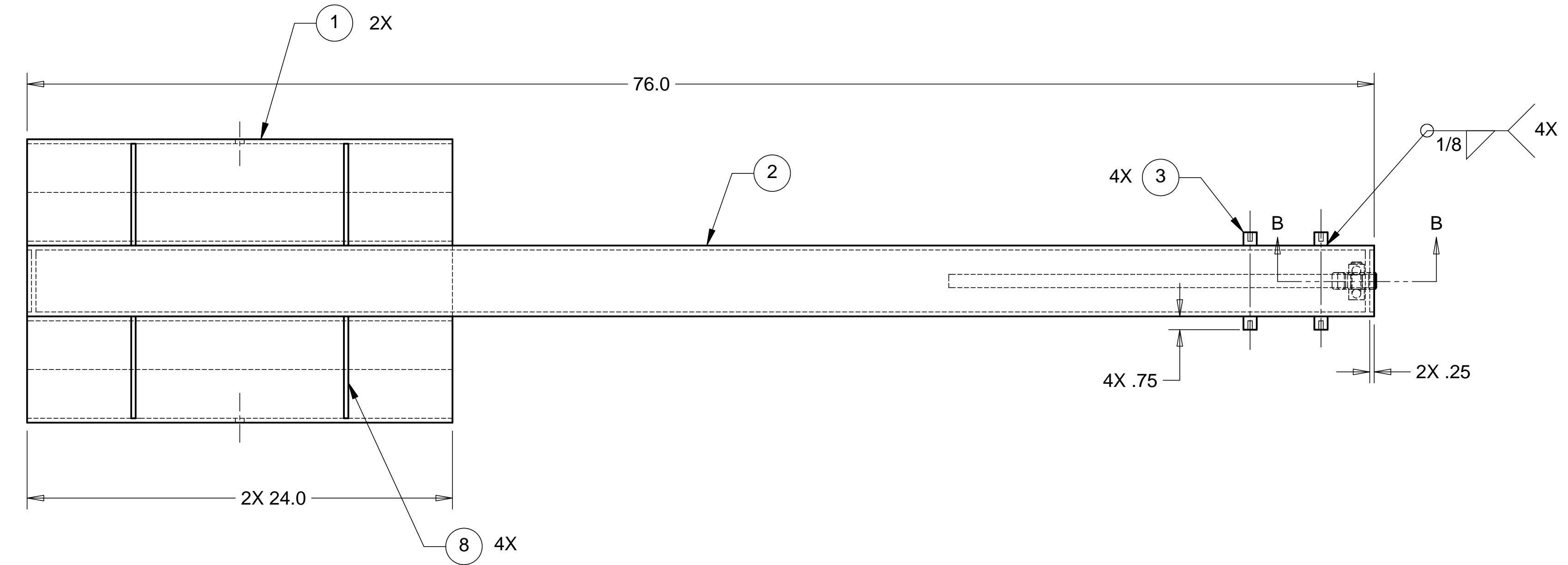


8 7 6 5 4 3 2 1

REVISIONS			
REV.	DESCRIPTION	DATE	APPROVED

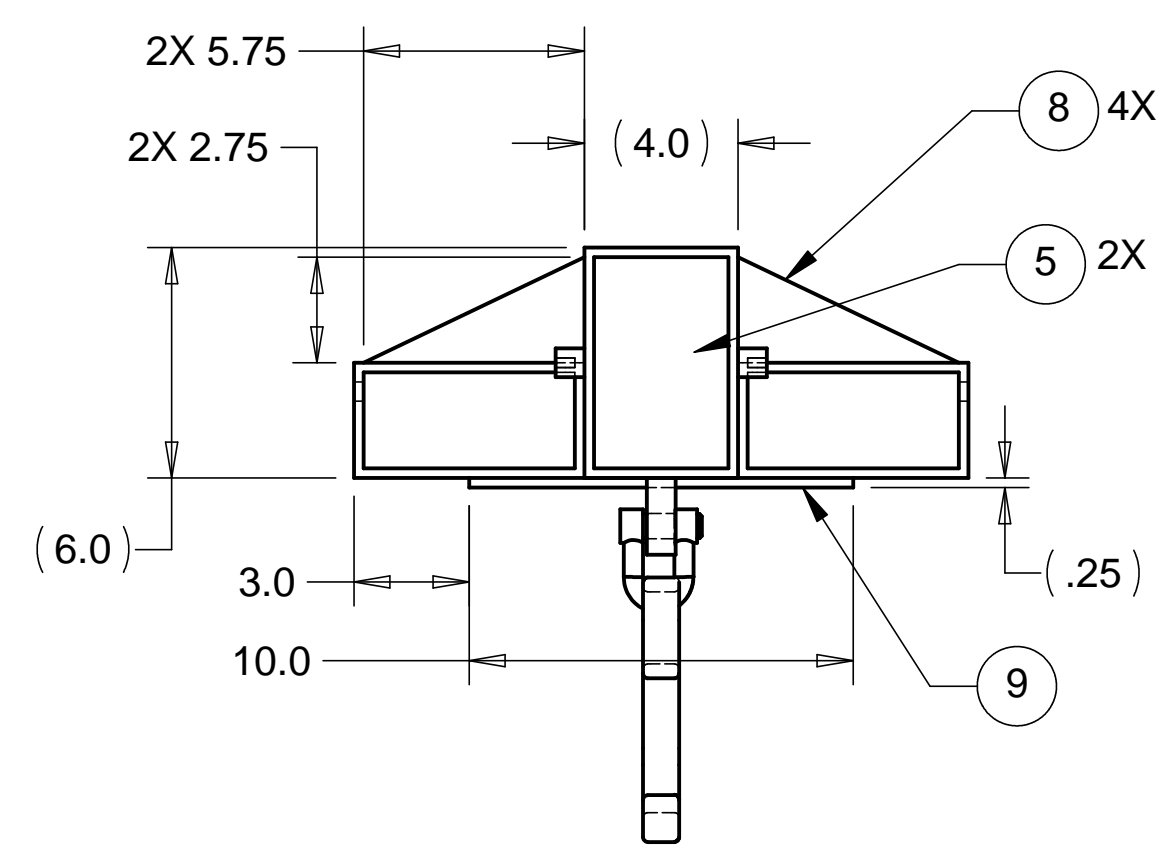
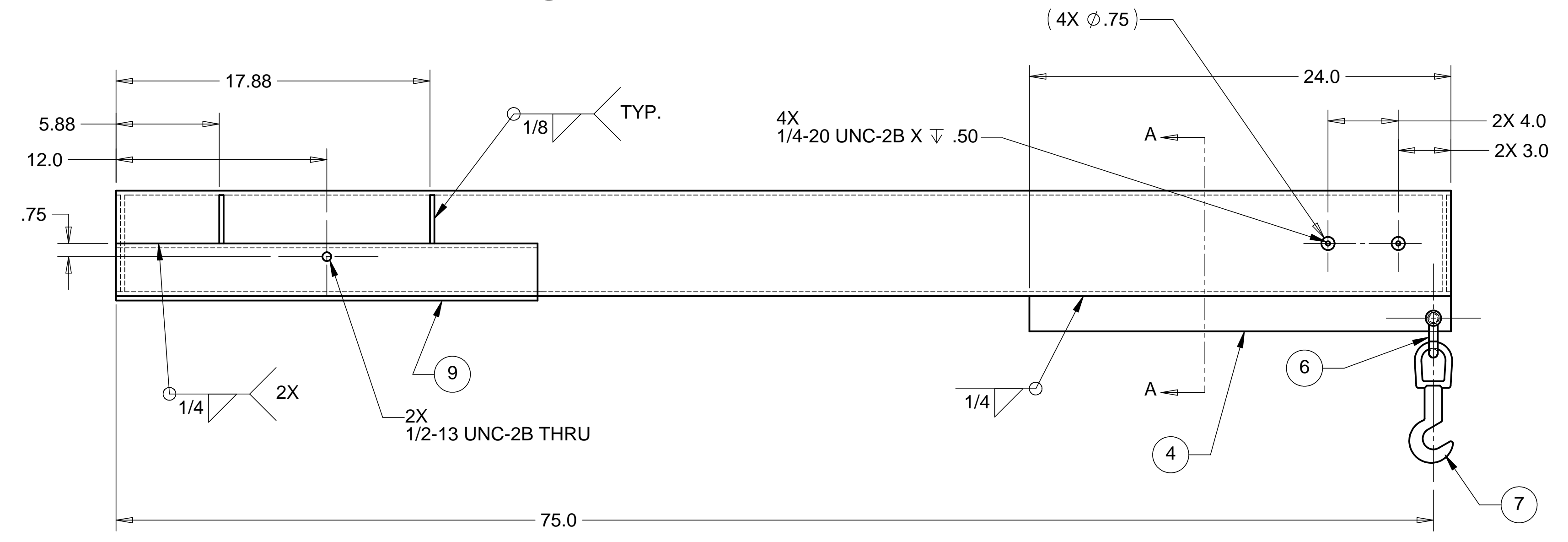
D

D



C

C



B

B

NOTES: UNLESS OTHERWISE SPECIFIED

1. ALL DIMENSIONS IN INCHES
2. DIMENSIONS AND TOLERANCING PER ASME Y14.5M-1994
3. SURFACE TEXTURE PER ANSI/ASME B 46.1-1985
4. REMOVE ALL BURRS AND BREAK SHARP EDGES TO A MAXIMUM OF .015
5. ALL INSIDE CORNERS TO BE .015 RADIUS MAX
6. COUNTERSINK 82 DEGREES ALL TAPPED HOLES TO MAJOR DIAMETER
7. COUNTERSINK 82 DEGREES APPROXIMATELY .015 DEEP ALL DRILLED HOLES
8. PARTS TO BE THOROUGHLY CLEANED TO REMOVE ALL OIL, GREASE, DIRT AND CHIPS
9. PART NUMBER (DRAWING NO. PLUS DASH NO. PLUS SERIAL NO.) TO BE CLEARLY MARKED ON THE PART ITSELF.
10. ALL FABRICATION, CLEANING, AND HANDLING MAINTAINED TO HYTEC SPECIFICATION: LIGO-TS-03 CATEGORY 1.
11. NO SULFUR BASED CUTTING FLUIDS ALLOWED. APPROVED STAINLESS STEEL MACHINE LUBRICANT: RELTON A-9, RELTON
12. PAINT MILD STEEL PARTS ONLY.
13. PRIMER (ALL VISIBLE SURFACES): SHERMAN WILLIAMS INDUSTRIAL WASH PRIMER PG062.
14. PAINT (ALL VISIBLE SURFACES): SHERMAN WILLIAMS POLANE T POLYURETHANE COLOR JUNCTION YELLOW, COLOR #F63TXY-0310-4352.
15. FORKLIFT BOOM WEIGHS 196.6 Lbs.

ITEM NO.	QTY.	PART NO.	DESCRIPTION
1	2		TUBING, 3 X 6 X .25 WALL, 303 OR 304 SSTL
2	1		TUBING, 4 X 6 X .25 WALL, A500 MILD STEEL
3	4		ROUND STOCK, .75 DIA., 303 OR 304 SSTL
4	1		PLATE, .75 THK, 303 OR 304 SSTL
5	2		PLATE, .25 THK, MILD STEEL
6	1	McMASTER 35895T14	CAST D-SHACKLE, 5/8 DIA. PIN, 316 SSTL
7	1	McMASTER 35165T9	SWIVEL EYE HOOK, 316 SSTL
8	4		PLATE, .25 THK, MILD STEEL
9	1		PLATE, .25 THK, 304 SSTL

PARTS LIST

UNLESS OTHERWISE SPECIFIED: DIMENSIONS ARE IN INCHES -TOLERANCES-		CAD GENERATED DRAWING, DO NOT MANUALLY UPDATE DO NOT SCALE DRAWING		HYTEC, INC TITLE HAM CHAMBER FORKLIFT BOOM	
DECIMALS .XX = +/- .03 .XXX = +/- .010	ANGULAR = +/- 30' SURFACE FINISH = 250				
FINISH	SIGNATURE		DATE		DWG. NO. D972962
	DESIGNED	ROGER L. SMITH	3-24-98		
	DRAWN	ROGER L. SMITH	3-24-98		
	CHECKED	HARRY SALAZAR	4/20/98		
	ENGR.	T. THOMPSON	4/20/98		
PART NO. D972962-1	APPROVED	T. THOMPSON	4/20/98		SCALE 1/5 SHEET NO. D 1 of 1

8 7 6 5 4 3 2 1

A

A