

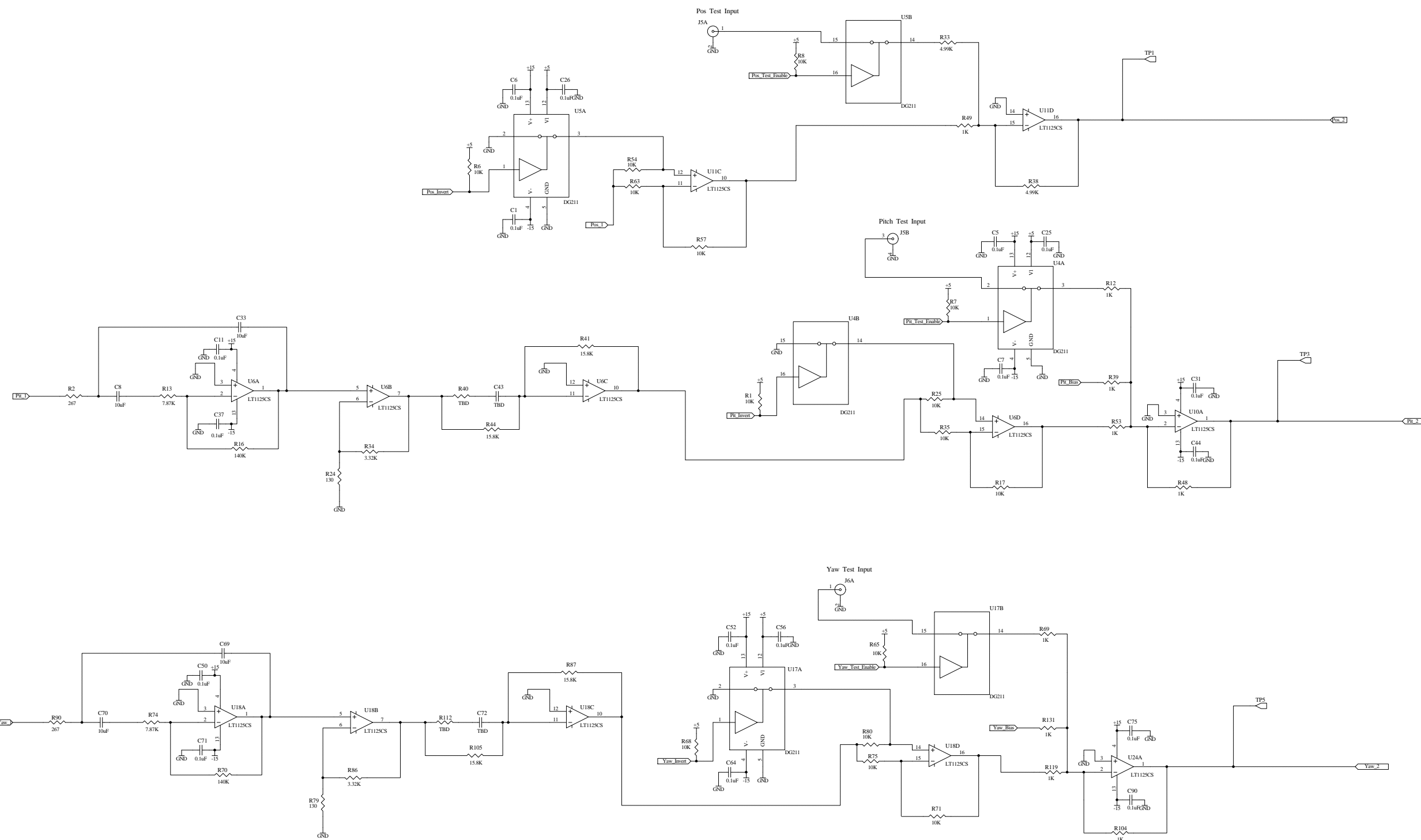
Rev C2 Upgrade
 Note: In some cases the input MAX9809s have been replaced by fixed resistors. The MAX9809 is removed and the resistor placed from the input pin to the output pin. If a fixed pot value of 25% is needed the fixed resistor will be a 3K ohm resistor.

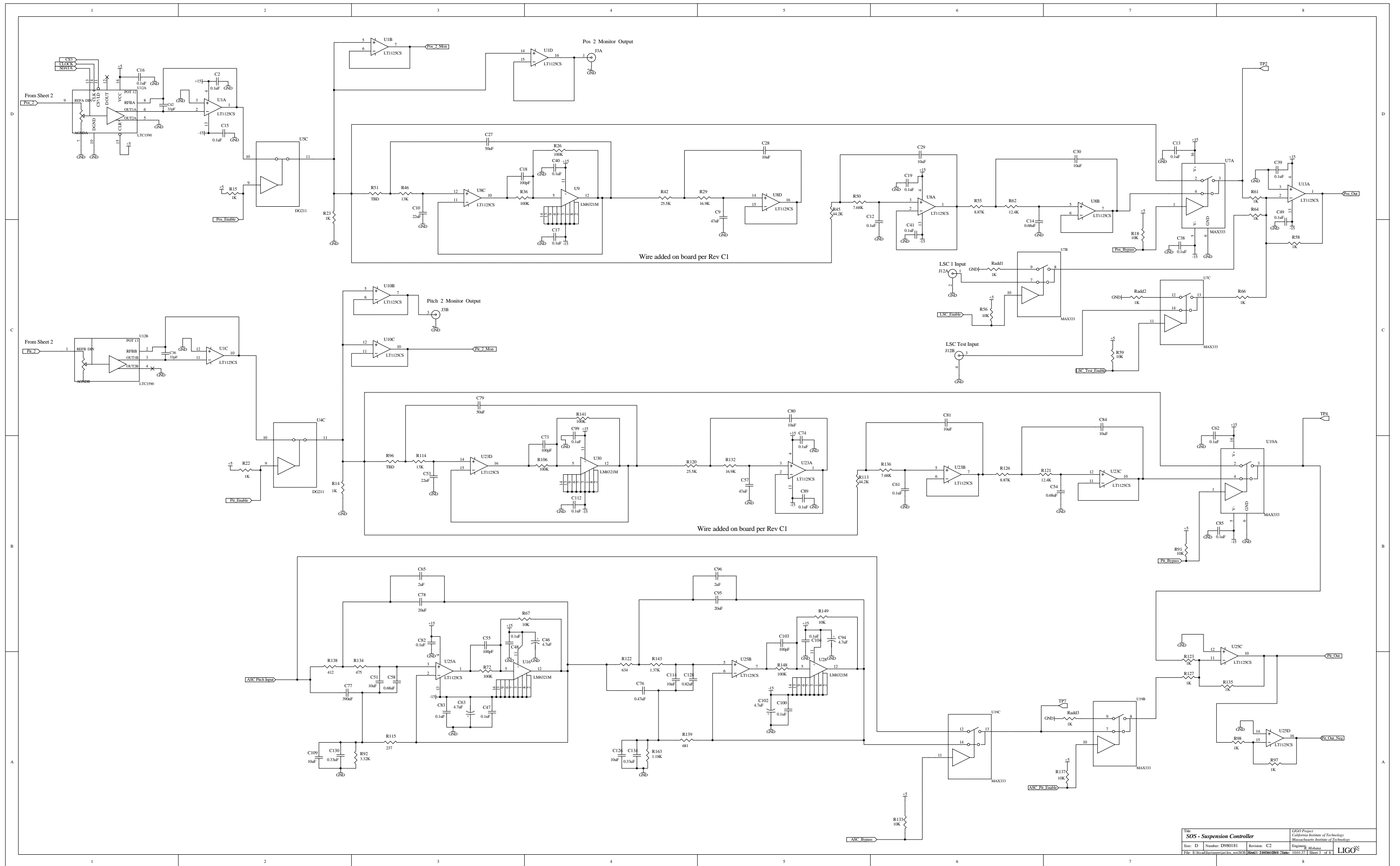
D

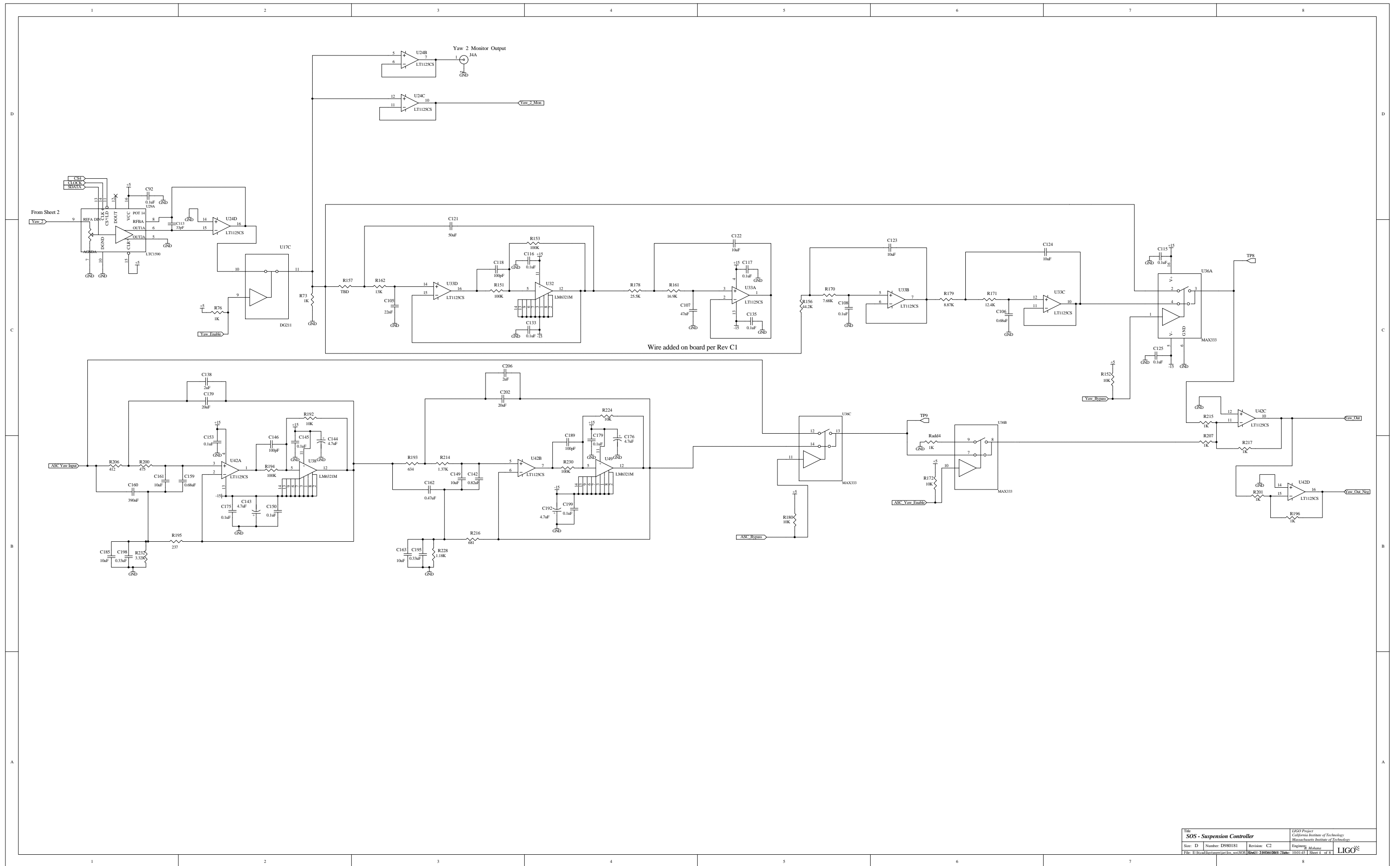
C

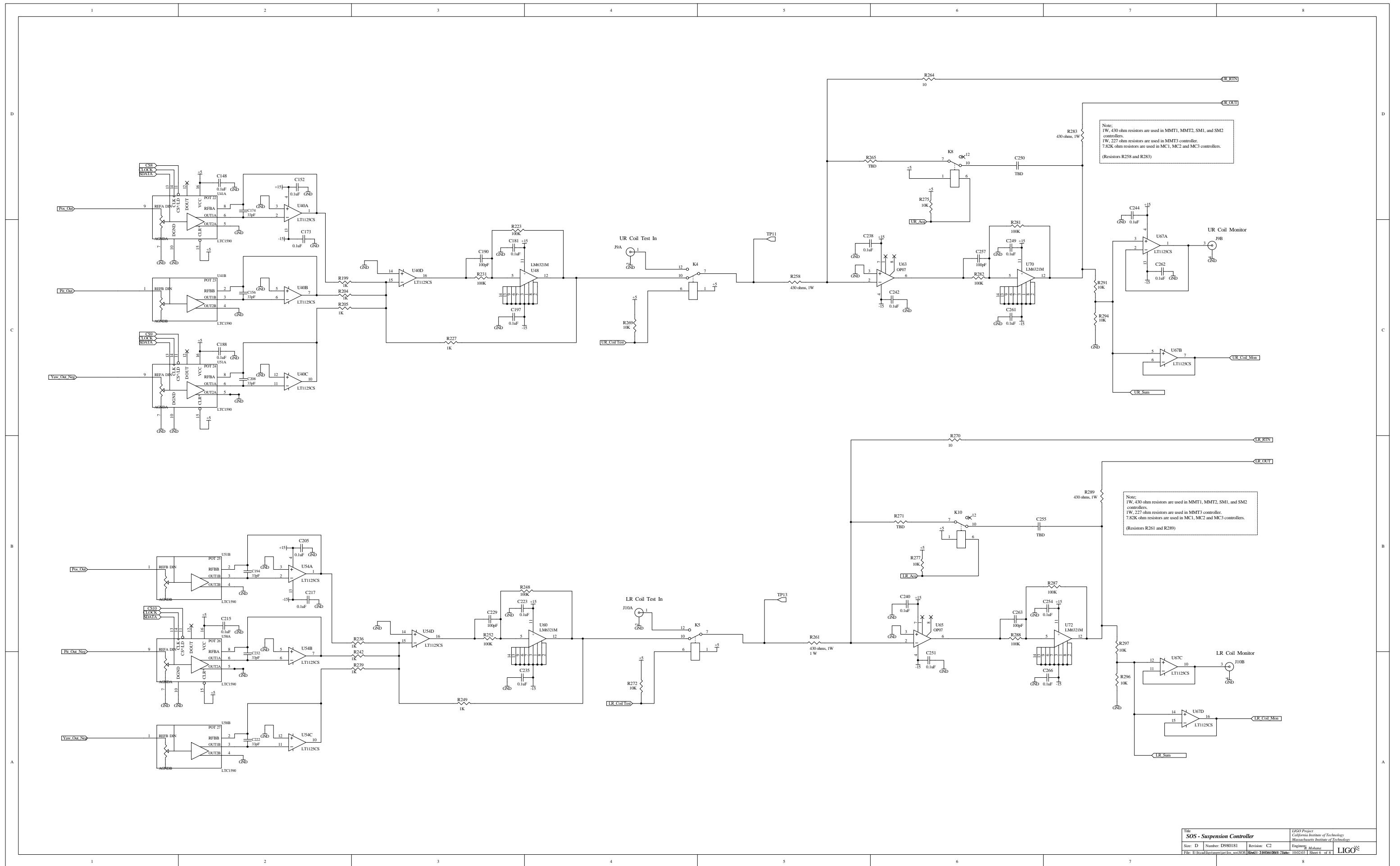
B

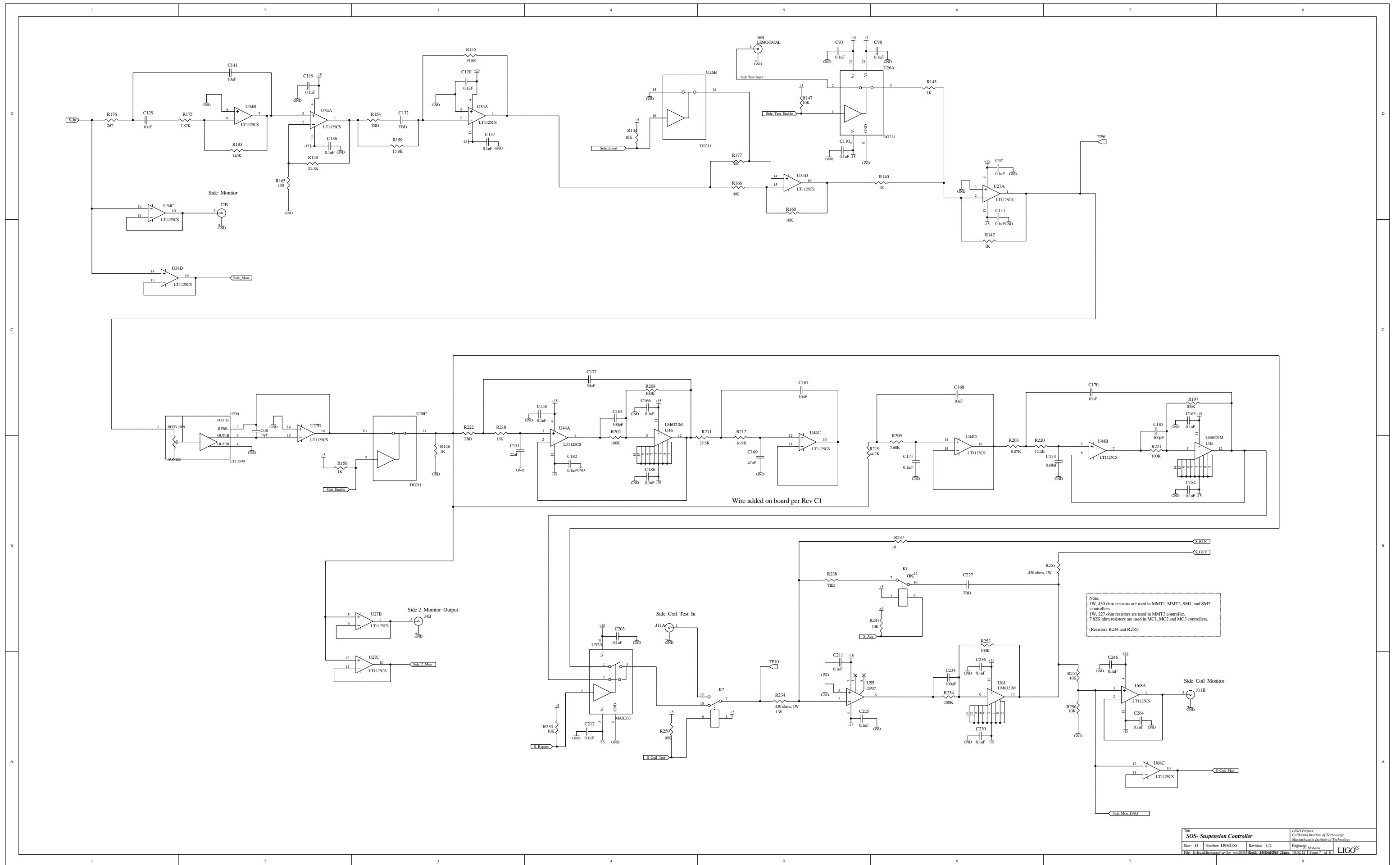
A











Note:
 1W, 430 ohm resistors are used in MMT1, MMT2, SM1, and SM2 controllers.
 1W, 227 ohm resistors are used in MMT3 controller.
 7.82K ohm resistors are used in MC1, MC2 and MC3 controllers.
 (Resistors R234 and R255)

