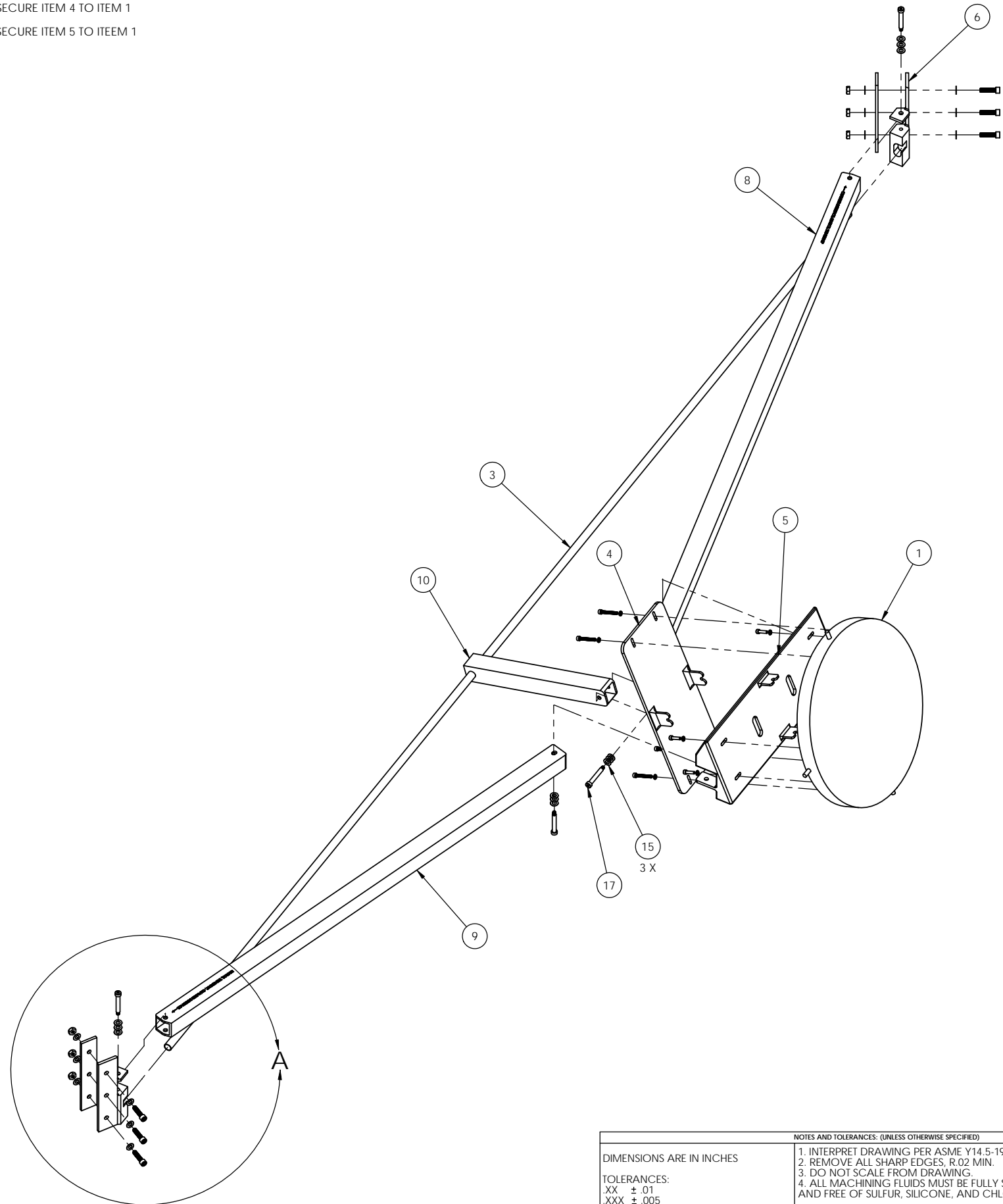


- NOTES CONTINUED:
- 5 NUTS ARE USED TO SECURE ASSEMBLY TO INTERIOR FLANGES OF THE BSC WELDMENT
 - 6 MACHINED FEATURES OF ITEM 2 MUST BE ALIGNED WITH THE FLANGES OF ITEM 5
 - 7 MACHINED FEATURES OF ITEM 2 MUST BE ALIGNED WITH FLANGES OF ITEM 4
 - 8 ITEM 13 ARE USED TO SECURE ITEM 4 TO ITEM 1
 - 9 ITEM 14 ARE USED TO SECURE ITEM 5 TO ITEM 1

REV.	DATE	DCN #	DRAWING TREE #
v1	12-OCT-2010	-	-
v2	21-DEC-2010	E1000883-v1	E1000884-v1
-	-	-	-



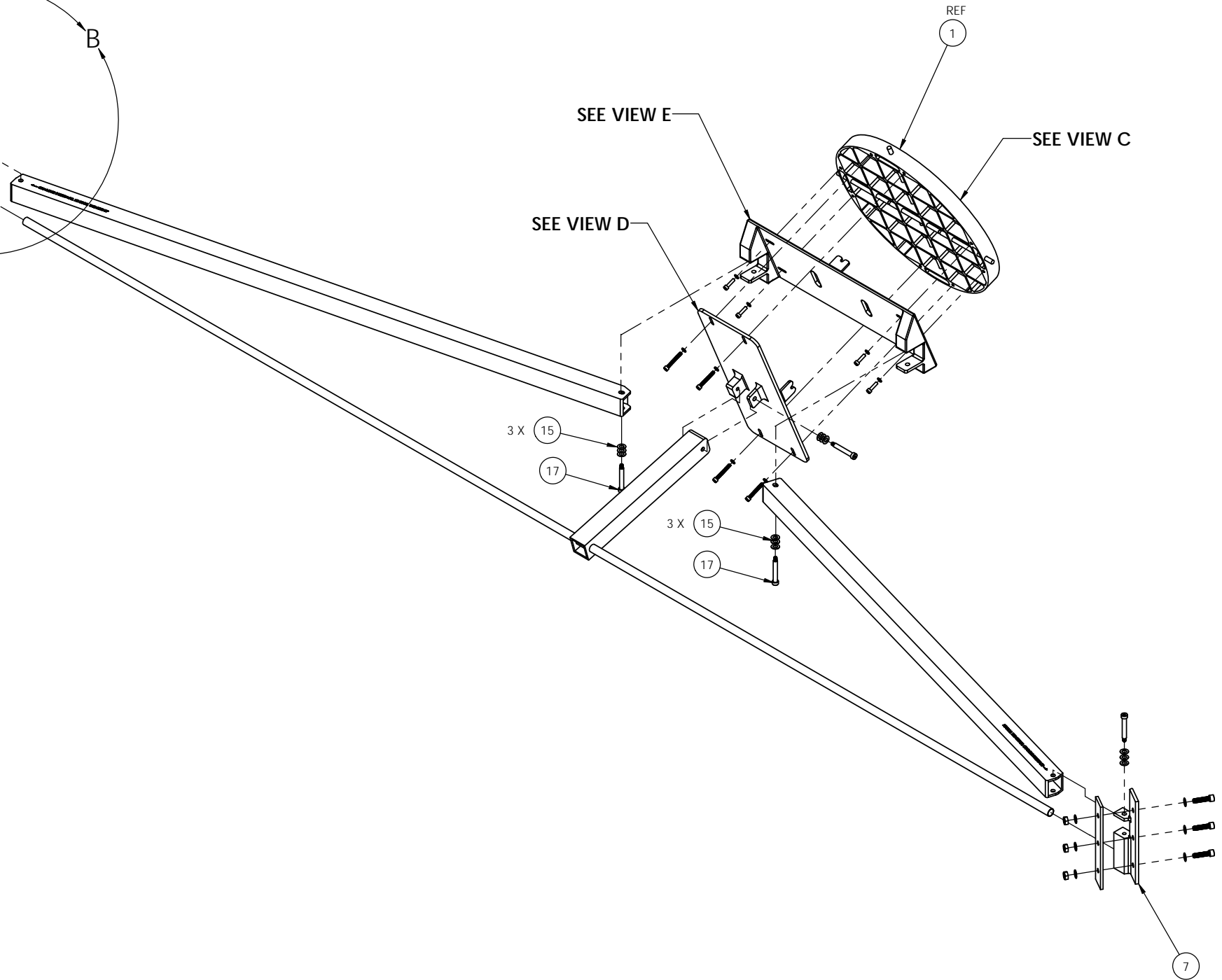
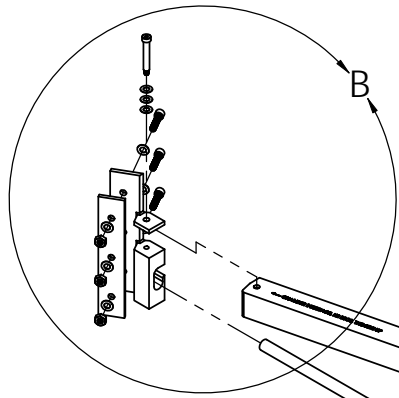
18	D1003328	aLIGO TCS UHV H2 ASSEMBLY INTERFACE DAMPER	VITON	2	2
17	SHCV-4436	SSHD, #10-32 UNC 2A X 1.5 LG, VENTED, UC-COMPONENTS	18-8 SSSL	5	1 6
16	N-2520-A	NUT, HEX, 1/4-20 UC-COMPONENTS	18-8 SSSL, Ag PLATED	6	1 7
15	WFV-25	WASHER, FLAT, VENTED, .26 ID X .47 OD X .032 THK. UC-COMPONENTS	18-8 SSSL	27	3 30
14	C-812-A	SSHC, #8-32 UNC-2A X 3/4 LG, VENTED. UC-COMPONENTS	18-8 SSSL, Ag PLATED	4	1 5
13	C-820-A	SSHC, #8-32 UNC-2A X 1-1/4 LG, VENTED. UC-COMPONENTS	18-8 SSSL, Ag PLATED	4	1 5
12	WFV-08	WASHER, FLAT, VENTED, #8.169 ID X .304 OD X .032 THK. UC-COMPONENTS	18-8 SSSL	8	2 10
11	C-2016-N	SSHC, 1/4-20 UNC-2A X 1 LG VENTED, UC-COMPONENTS	18-8 SSSL	6	1 7
10	D1002333	TCS UHV BACK BRACE, BSC7 & BSC8	6063-T5	1	1
9	D1002327	TCS UHV SHORT SUPPORT, BSC7 & BSC8	6063-T5	1	1
8	D1002317	TCS UHV LONG SUPPORT, BSC7 & BSC8	6063-T5	1	1
7	D1002453	aLIGO TCS UHV BRACKET, SHORT SIDE, BSC8	AISI 304	1	1
6	D1002454	aLIGO TCS UHV BRACKET, LONG SIDE, BSC8	AISI 304	1	1
5	D1002455	aLIGO TCS UHV AZ FINE ADJUST PIVOT PLATE, BSC8	6061-T6 (SS)	1	1
4	D1002311	EL FINE ADJUST PIVOT PLATE	6061-T6 (SS)	1	1
3	D1002334	TCS UHV COARSE ADJUST PIVOT ROD	AISI 316 ANNEALED SSSL BAR	1	1
2	D1002313	aLIGO TCS UHV FINE ADJUST PIVOT ROD	AISI 304	2	2
1	D1001727	aLIGO TCS H2 IN-VAC MIRROR	COPPER	1	1

ITEM NO.	PART NUMBER	DESCRIPTION	MATERIAL	REQ	SPARE	TOTAL
PARTS LIST						

NOTES AND TOLERANCES: (UNLESS OTHERWISE SPECIFIED)	
1. INTERPRET DRAWING PER ASME Y14.5-1994.	
2. REMOVE ALL SHARP EDGES, R.02 MIN.	
3. DO NOT SCALE FROM DRAWING.	
4. ALL MACHINING FLUIDS MUST BE FULLY SYNTHETIC, FULLY WATER SOLUBLE AND FREE OF SULFUR, SILICONE, AND CHLORINE.	
DIMENSIONS ARE IN INCHES	
TOLERANCES:	
.XX ± .01	
.XXX ± .005	
ANGULAR ± 0.1°	
MATERIAL	N/A
FINISH	N/A μinch

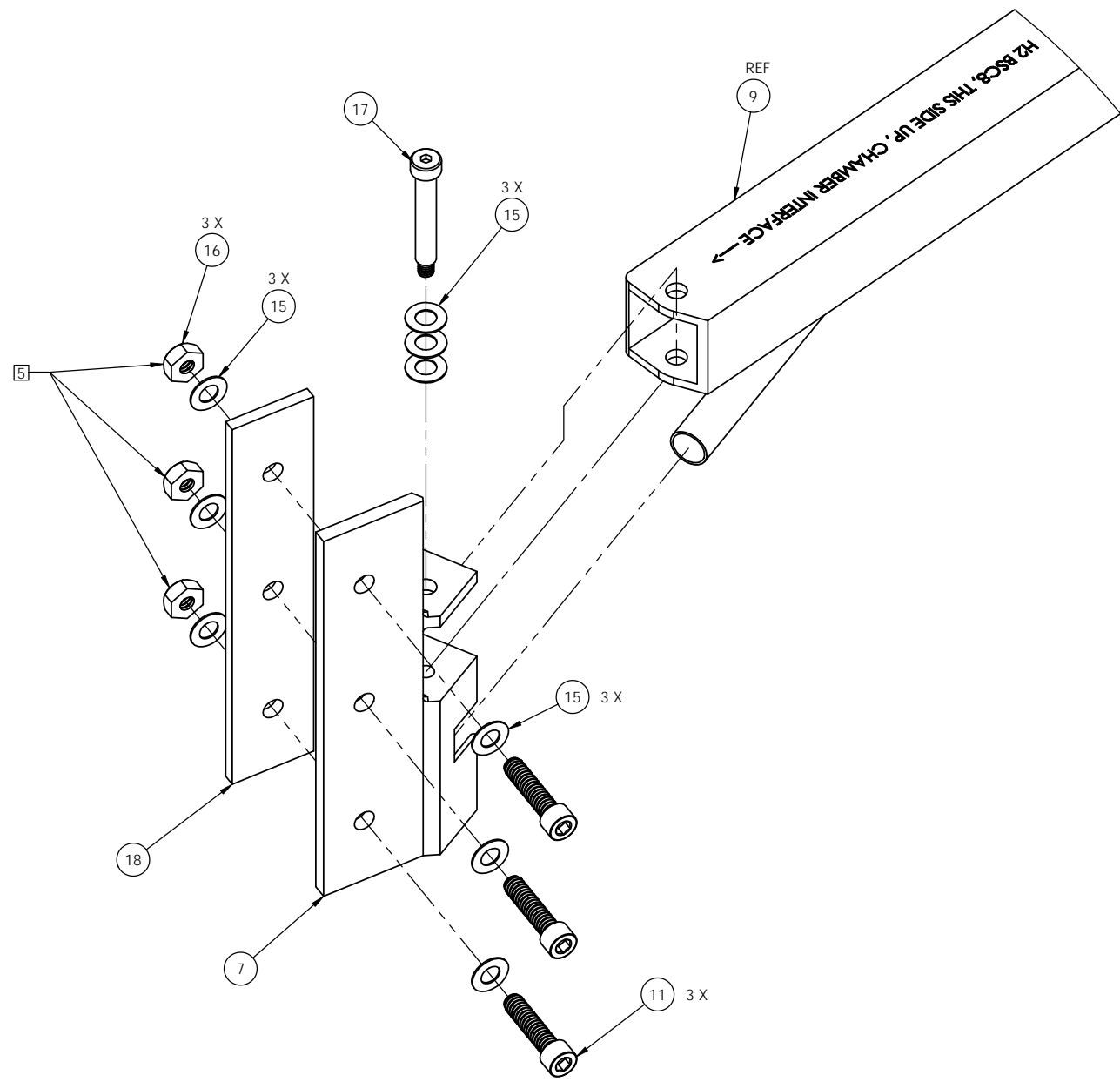
CALIFORNIA INSTITUTE OF TECHNOLOGY MASSACHUSETTS INSTITUTE OF TECHNOLOGY		PART NAME TCS CO2P IN-VAC STEERING OPTICS ASSY, H2, BSC8	
SYSTEM	ADVANCED LIGO	SUB-SYSTEM	AOS
NEXT ASSY	D1001227	DESIGNER	M. JACOBSON
		DRAFTER	A. COLE
		CHECKER	M. JACOBSON
		APPROVAL	C. TORRRE
DATE	15 SEP 2010	SIZE	D
DATE	12-OCT-2010	DWG. NO.	D1002431
DATE	12-OCT-2010	REV.	v2
DATE	12-OCT-2010	SCALE:	NONE
		PROJECTION:	
		SHEET 1 OF 4	

D1002431_TCS CO2P IN-VAC STEERING OPTICS ASSY, H2, BSC8 PART PDM REV: X.056, DRAWING PDM REV: X.010

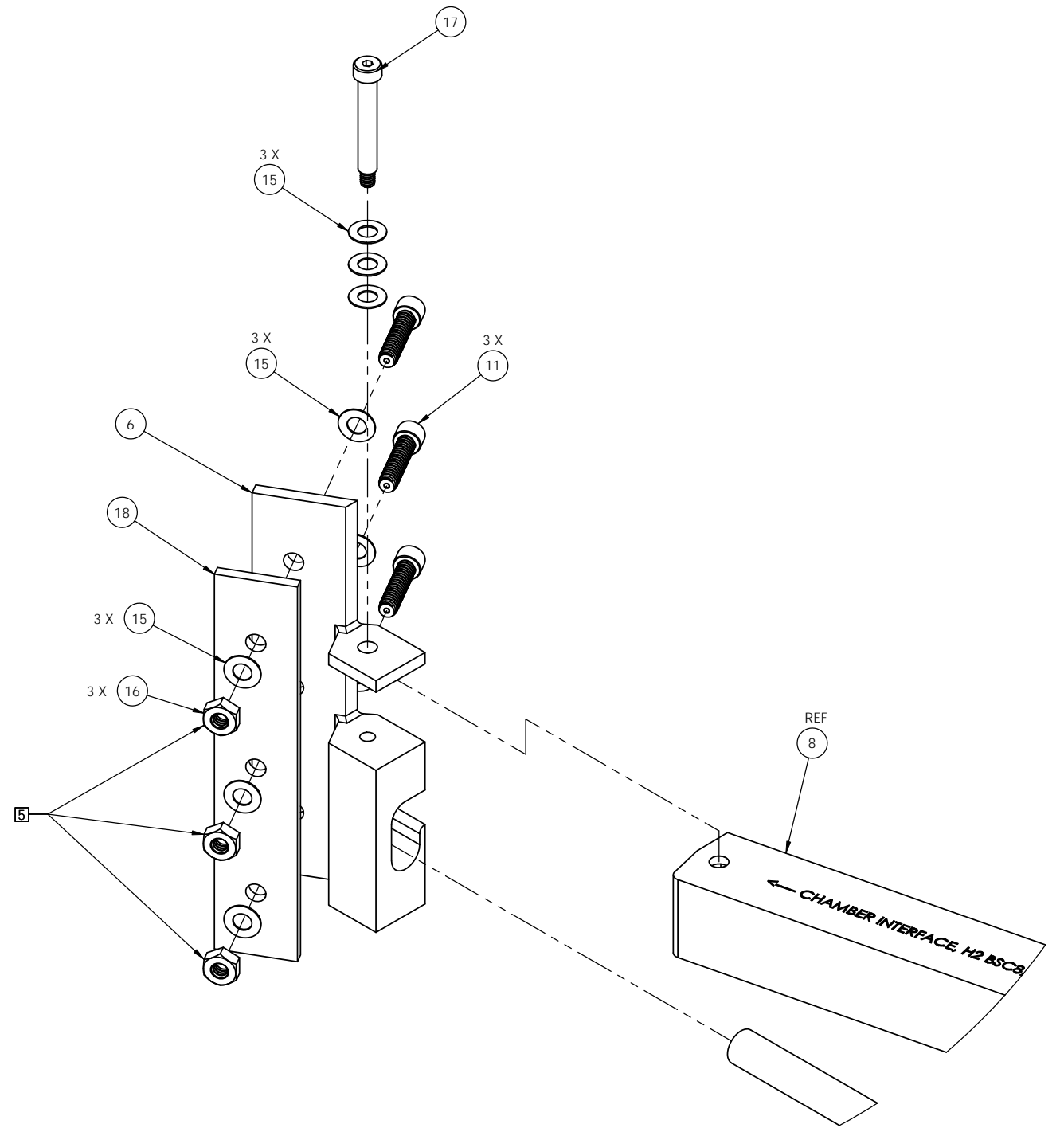


		CALIFORNIA INSTITUTE OF TECHNOLOGY MASSACHUSETTS INSTITUTE OF TECHNOLOGY	
SIZE	DWG. NO.	REV.	
D	D1002431	v2	
SCALE: 1:8	PROJECTION:	SHEET 2 OF 4	

D1002431_ICS_C03P1NAC_STEERING_OPTICS_ASSY_I2_BSC1_PART_PDM_REV_X.056_DRAWING_PDM_REV_X.010



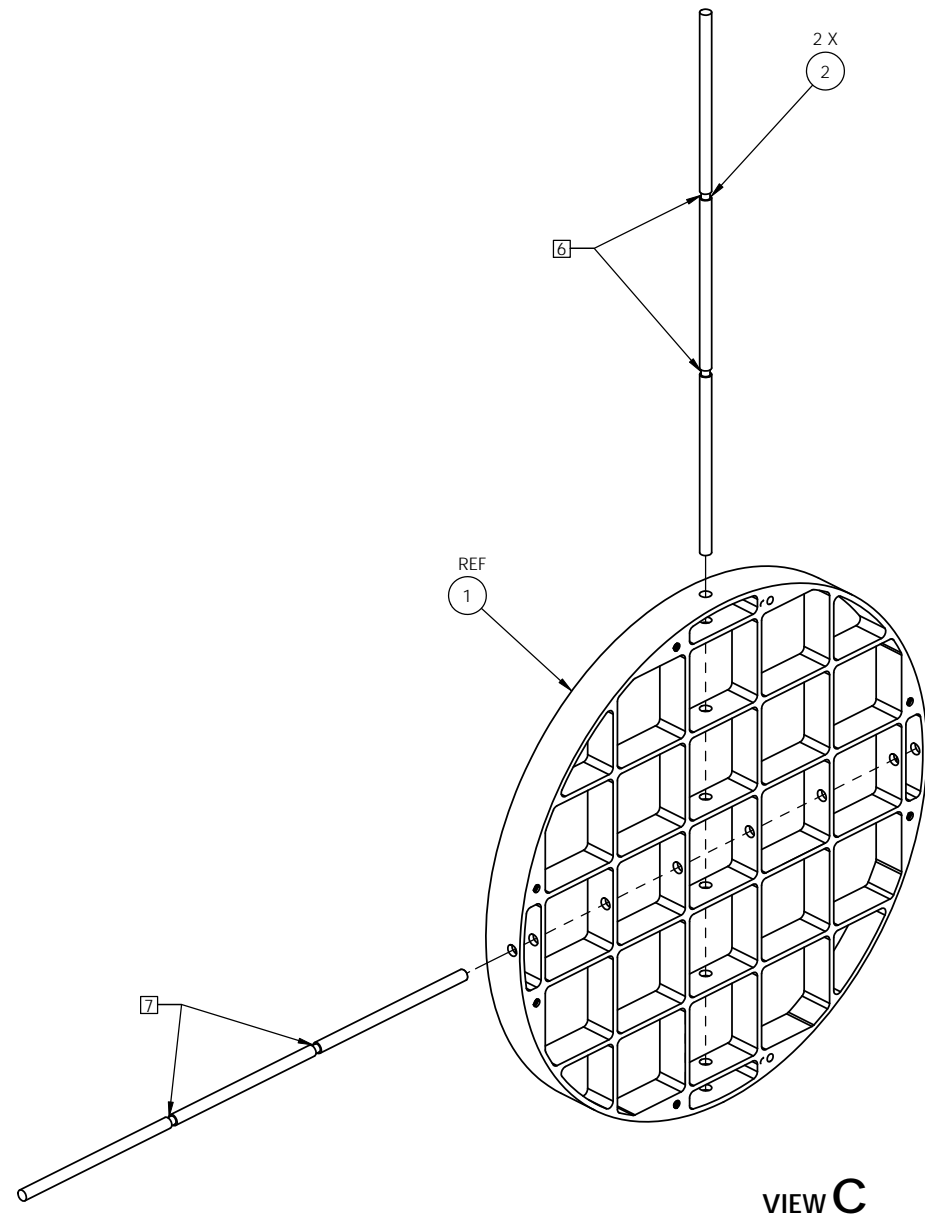
DETAIL A
SCALE 1 : 1



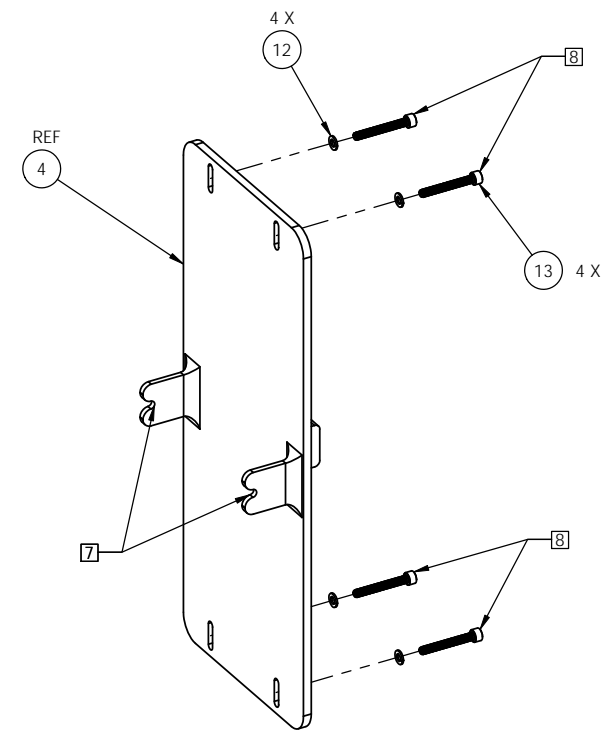
DETAIL B
SCALE 1 : 1

LIGO CALIFORNIA INSTITUTE OF TECHNOLOGY MASSACHUSETTS INSTITUTE OF TECHNOLOGY		
SIZE	DWG. NO.	REV.
D	D1002431	v2
SCALE: 1:8	PROJECTION:	SHEET 3 OF 4

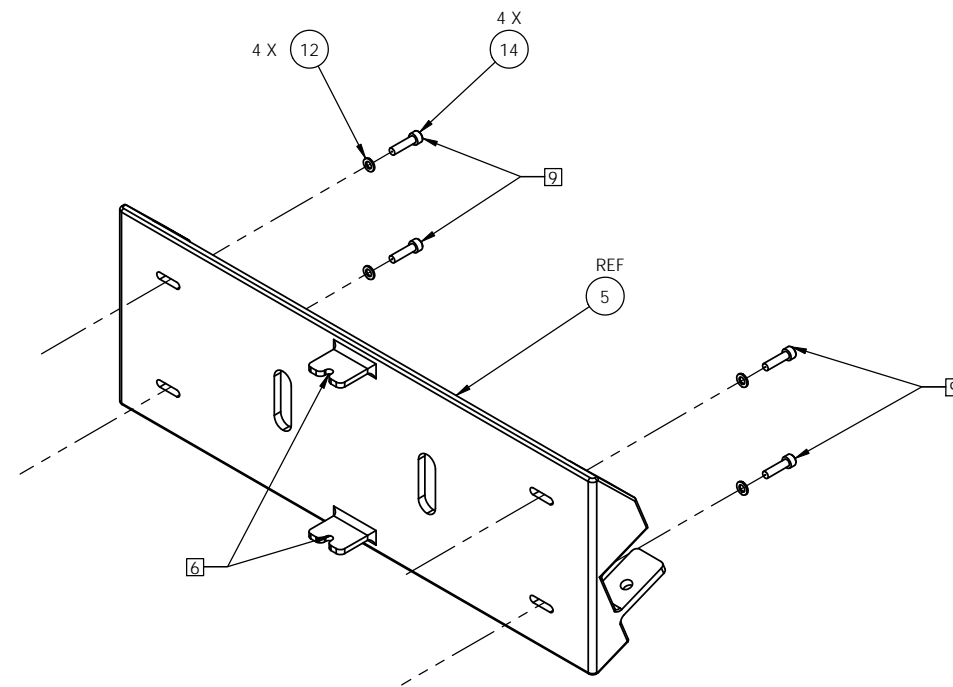
D1002431_ICS_CCDP_IN_VAC_STEERING_OPTICS_ASSY_H2_BSCB_PART_PDM_REV_X.C66_DRAWING_PDM_REV_X.010



VIEW C



VIEW D



VIEW E

LIGO CALIFORNIA INSTITUTE OF TECHNOLOGY MASSACHUSETTS INSTITUTE OF TECHNOLOGY		
SIZE	DWG. NO.	REV.
D	D1002431	v2
SCALE: 1:8	PROJECTION:	SHEET 4 OF 4

D1002431_ICS_CCDP_IN_VAC_STEERING_OPTICS_ASSY_H2_BSC1_PART_PDM_REV_X.013_DRAWING_PDM_REV_X.010