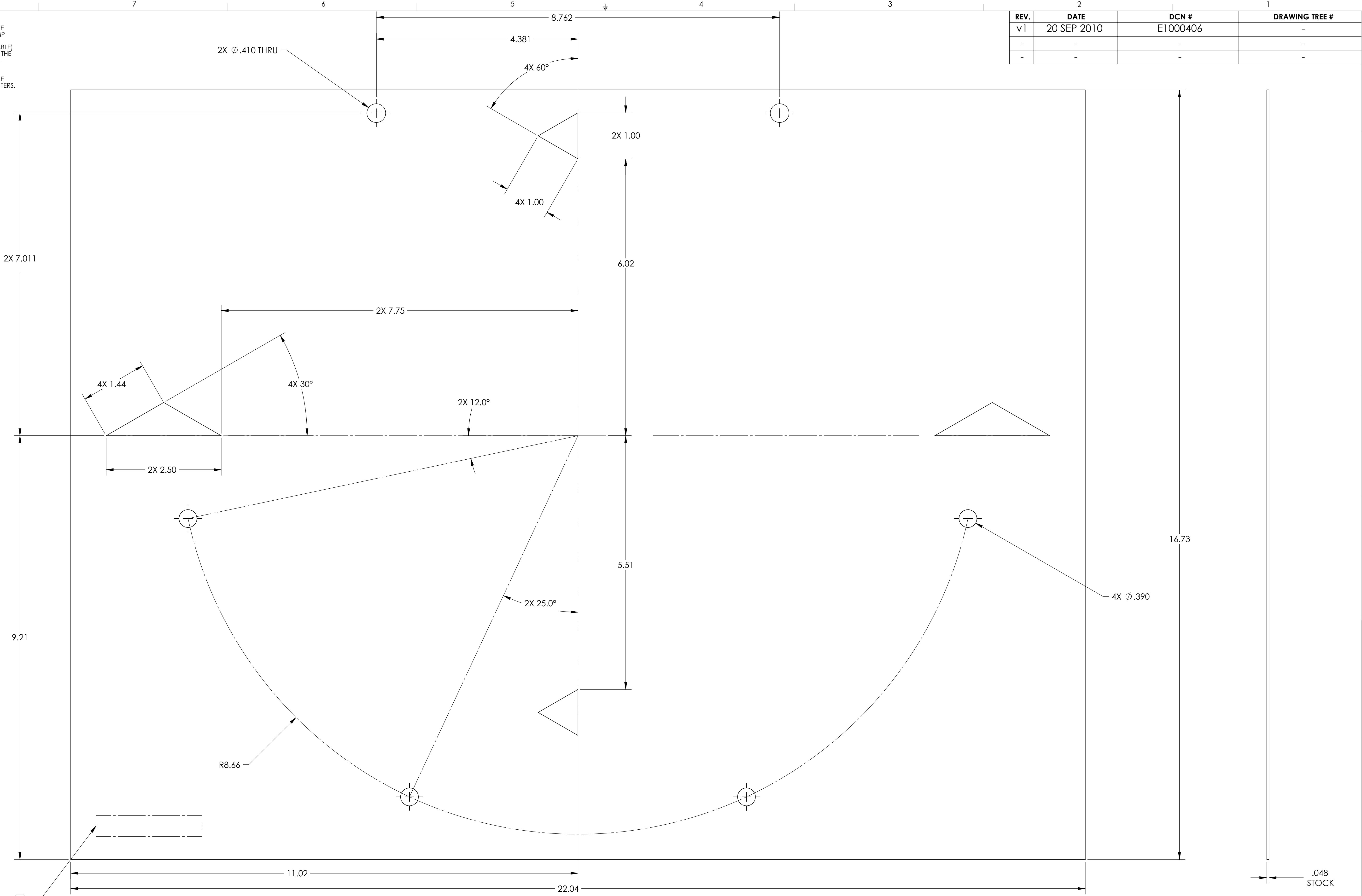


NOTES CONTINUED:
 ⑤ SCRIBE, ENGRAVE (A VIBRATORY TOOL MAY BE USED), LASER MARK OR MECHANICALLY STAMP (NO INKS OR DYES) DRAWING PART NUMBER, REVISION (AND VARIANT OR 'TYPE' IF APPLICABLE) ON NOTED SURFACE OF PART FOLLOWED ON THE NEXT LINE WITH A THREE DIGIT SERIAL NUMBER. SERIAL NUMBERS START AT 001 FOR THE FIRST ARTICLE AND PROCEED CONSECUTIVELY. USE MINIMUM 0.12" HIGH CHARACTERS, UNLESS THE SIZE OF THE PART DICTATES SMALLER CHARACTERS. EXAMPLE: DXXXXXX-VY, TYPE-XX, S/N XXX

REV.	DATE	DCN #	DRAWING TREE #
v1	20 SEP 2010	E1000406	-
-	-	-	-
-	-	-	-



D1002446_AudLGO_AQS_SLC FM Ellip Baffle Engrave Lines Template_PART.PDM.REV.Y-003_DRAWING.PDM.REV.X-002

NOTES AND TOLERANCES: (UNLESS OTHERWISE SPECIFIED)	
1. INTERPRET DRAWING PER ASME Y14.5-1994. 2. REMOVE ALL SHARP EDGES R.02 MIN. 3. DO NOT SCALE FROM DRAWING. 4. ALL MACHINING FLUIDS MUST BE FULLY SYNTHETIC, FULLY WATER SOLUBLE AND FREE OF SULFUR, SILICONE, AND CHLORINE.	
DIMENSIONS ARE IN INCHES TOLERANCES: .XX ± .01 .XXX ± .005 ANGULAR ± 0.5°	MATERIAL: 6061-T6 Al FINISH: μinch

CALIFORNIA INSTITUTE OF TECHNOLOGY MASSACHUSETTS INSTITUTE OF TECHNOLOGY	
SYSTEM: ADVANCED LIGO NEXT ASSY: N/A	SUB-SYSTEM: AOS

PART NAME: SLC FM ELLIPTICAL BAFFLE ENGRAVE LINE TEMPLATE			
DESIGNER: N. Nguyen	15 SEP 2010	SIZE: D	DWG. NO.: D1002446
DRAFTER: N. Nguyen	15 SEP 2010	SCALE: 1:1	PROJECTION:
CHECKER: M. Smith	20 Sep 2010	SHEET 1 OF 1	REV. v1
APPROVAL: D. Coyne	30 Sep 2010		