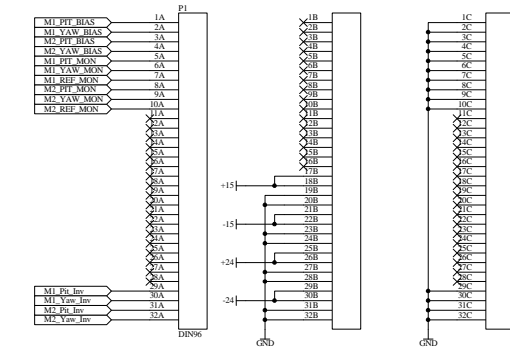
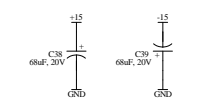
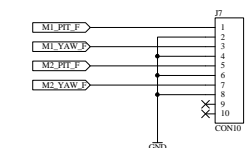
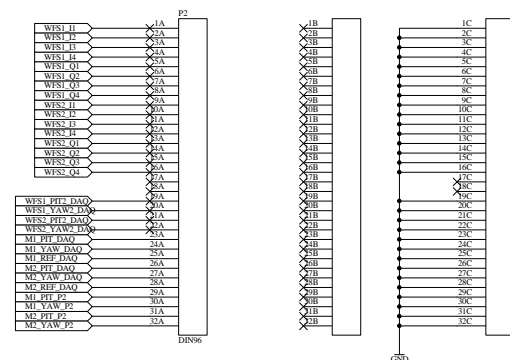


Revision	Description of Changes	Date
A	Hanford as built boards (using rev 00 boards) 1. Made Yaw- output fixed at 100V 2. Modified output circuit to allow 100V max output w/ 150 PS 3. Switched pins 2 and 3 of U1, U3, U4, U7, U8 4. Changed logic and pull up power for swites from +5 to +15 5. Removed R26, R28, R33, R35 and connected bias adjust pot to -15	8/99
B	1. Modified PCB from Rev. 00 to accomodate changes made for Rev A 2. Added series output resistors to outputs and monitors 3. Reannotated board and schematic	10/99
C	1. Added front panel input connector J7 with jumpers JP1-Jp4 for input selection. 2. Replaced FP HV output connectors with SMB to avoid confusion. 3. Reannotated FP connectors. 4. Grounded P1-29C, P1-30C, P1-31C, P1-32C.	1/02



Daisy-Chained Connection to Whitening and Servo Amp Modules



PZTDiverRecC
PZTDiverRecSCH

- M1_YAW2
- M1_PT2
- M1_PT_BIAS
- M1_YAW_BIAS
- M2_YAW2
- M2_PT2
- M2_PT_BIAS
- M2_YAW_BIAS
- M1_PT_MON
- M1_PT_DDAQ
- M1_YAW_MON
- M1_YAW_DDAQ
- M1_REF_MON
- M1_REF_DDAQ
- M2_PT_MON
- M2_PT_DDAQ
- M2_YAW_MON
- M2_YAW_DDAQ
- M2_REF_MON
- M2_REF_DDAQ
- M1_Pc_Inv
- M1_PT
- M1_PT2
- M1_Yaw_Inv
- M1_YAW
- M2_Pc_Inv
- M2_PT
- M2_PT2
- M2_Yaw_Inv
- M2_YAW
- M2_YAW2

PZTDiver2RecC
PZTDiver2RecSCH

- M1_PT
- M1_YAW
- M2_PT
- M2_YAW
- M1_PT_BIAS
- M1_YAW_BIAS
- M2_PT_BIAS
- M2_YAW_BIAS
- M1_PT_DDAQ
- M1_YAW_DDAQ
- M1_REF_DDAQ
- M2_PT_DDAQ
- M2_YAW_DDAQ
- M2_REF_DDAQ
- M1_PT_MON
- M1_YAW_MON
- M1_REF_MON
- M2_REF_MON
- M2_YAW_MON
- M2_PT_MON
- M1_Pc_Inv
- M1_Yaw_Inv
- M2_Pc_Inv
- WS1_I1
- WS1_I2
- WS1_I3
- WS1_I4
- WS1_Q1
- WS1_Q2
- WS1_Q3
- WS1_Q4
- WS1_I1
- WS1_I2
- WS1_I3
- WS1_I4
- WS2_I1
- WS2_I2
- WS2_I3
- WS2_I4
- WS2_Q1
- WS2_Q2
- WS2_Q3
- WS2_Q4
- WS1_PT2_DDAQ
- WS1_YAW2_DDAQ
- WS2_PT2_DDAQ
- WS2_YAW2_DDAQ