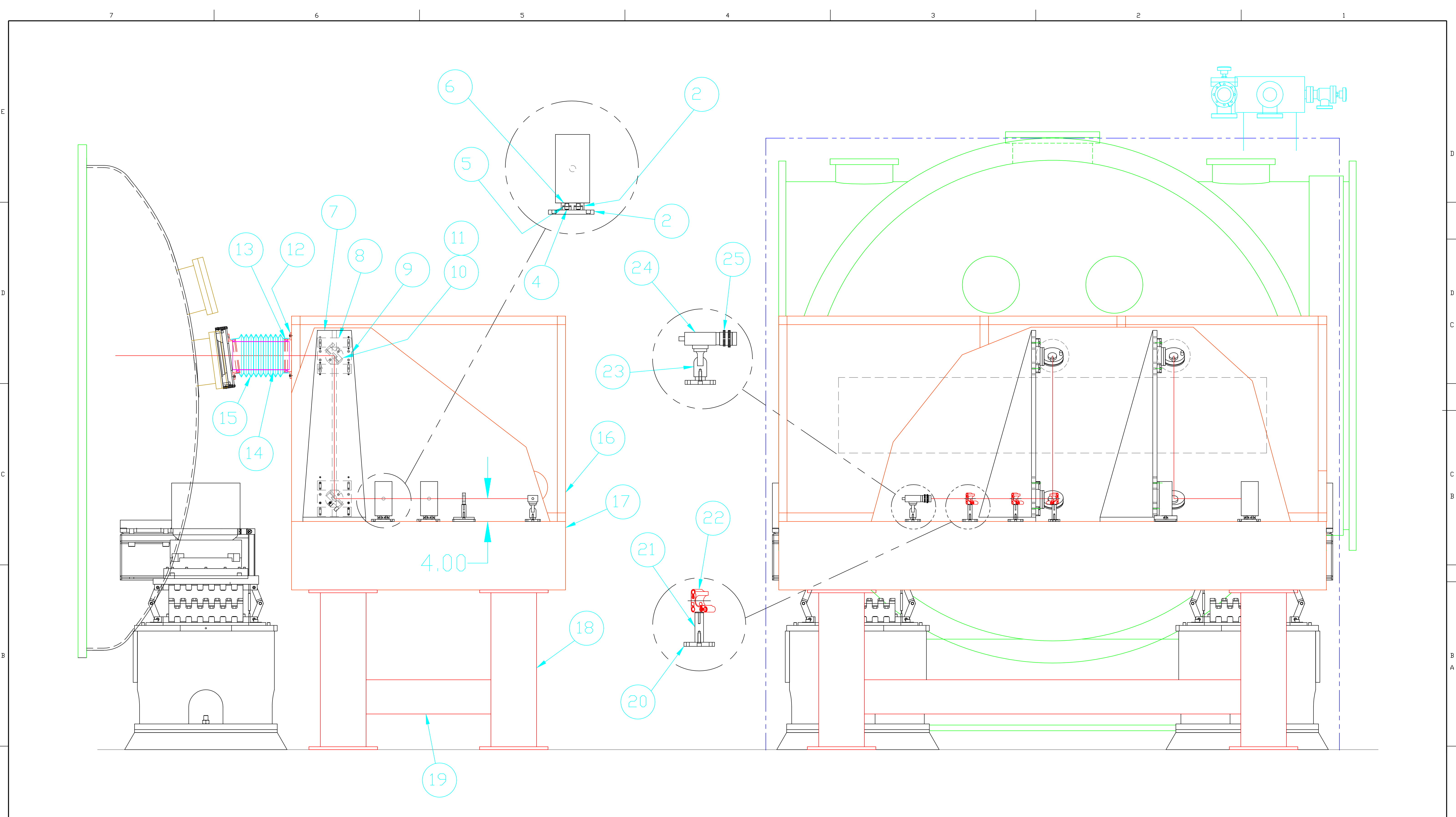


63	2	8807	MOTORIZED CENTER MOUNT	NEW FOCUS
62	2	D970197-A-D	VIEWPORT ADAPTER	-
61	1	BSI-1064-80-1025-45P	BEAMSPLITTER	CVI
60	4	5104	MIRROR	NEW FOCUS
59	2	BICC-25.4-77.6-C	LENS	CVI
58	1	BSI-1064-50-1025-45P	BEAMSPLITTER	CVI
57	1	D980340-0-D	LSC PHOTODIODE MOUNT	-
56	1	TBD	LSPD ASSEMBLY	-
55	3	BSI-1064-98-1025-45P	BEAMSPLITTER	CVI
54	3	BT500	BEAM DUMP	THORLABS
53	3	9909	HOLDING FORK	NEW FOCUS
52	3	9956	3.0" PEDESTAL	NEW FOCUS
51	-	BPX-050-C	1.0" FL LENS	THORLABS
50	1	ND05A	ND FILTER	THORLABS
49	1	SMIL03	LENS TUBE	THORLABS
48	1	SMIL10	LENS TUBE	THORLABS
47	1	SM1RR	LOCKING NUT	THORLABS
46	1	BPX-050-C	1.0" FL LENS	THORLABS
45	1	PD255	PHOTODETECTOR	THORLABS
44	1	TBD	QUAD DIODE ASSEMBLY	-
43	1	D980339-0-D	VIEWPORT ADAPTER- END	-
42	1	D980338-0-D	VIEWPORT ADAPTER- MID	-
41	A/R	92196A197	8-32 x 3/4" SHCS	MCMMASTER CARR
40	A/R	92141A029	1/4" FLAT WASHERS	MCMMASTER CARR
39	32	92196A544	1/4-20 x 1.25 SHCS	MCMMASTER CARR
38	1	D980337-0-D	PEDESTAL 2.260	-
37	1	TFPC12-1100	POLARIZING CUBE	KARL LAMBRECT
36	1	1304	POLARIZER ADAPTER	CVI
35	1	1100-10	POLARIZER MOUNT	CVI
34	1	3903	ELECTRO-OPTIC SHUTTER	LASER METRICS
33	1	D980336-0-D	EOS MOUNT	-
32	1	9071	KINEMATIC STAGE	NEW FOCUS
31	3	D980335-0-D	PEDESTAL 3.015"	-
30	1	PLCX-25.4-515.1-C	1016.7 FL LENS	CVI
29	4	LH100	LENS MOUNT	NEWPORT
28	3	9914	BASEPLATE	NEW FOCUS
27	1	D980334-00-D	SHUTTER PEDESTAL	-
26	1	VS14S2WD	SAFETY SHUTTER	UNIBLITZ
25	2	TBD	CAMERA LENS	-
24	2	XC-75	CAMERA	SONY
23	2	DS3.886	CAMERA MOUNT	EDMUND SCIENTIFIC
22	10	U100-A	MIRROR MOUNT	NEWPORT
21	1	D980333-0-D	2.635" PEDESTAL	-
20	11	B-2	2.0" BASE	NEWPORT
19	1	TB-48	TIE BARS	NEWPORT
18	1	NN4-23.5-TC	FIXED LEG SYSTEM	NEWPORT
17	1	RS4000-48-12	TABLE	NEWPORT
16	1	D980332-00-D	ISC TABLE ENCLOSURE	DATA OPTICS
15	2	D970198-A-D	BEAM TUBE	-
14	2	CT-6	BELLOWS	A & A MFG.
13	4	71275S	LIPSEAL	JOHNS MANVILLE
12	2	D980206-0-D	SEAL MOUNT	-
11	4	TBD	38 MM MIRROR	-
10	4	SL38.1	OPTIC MOUNT	NEWPORT
9	4	D980331-00-D	SPACER BLOCK	-
8	4	D980330-0-D	VERTICAL ADJUST PLATE	-
7	2	D980329-0-D	PERISCOPE SUPPRT STRUCTURE	-
6	A/R	7648A35	KAPTON INSULATION TAPE	MCMMASTER-CARR
5	4	17455-D-1	INSULATING BUSHING	ACCURATE SCREW MACH.
4	A/R	92196A542	1/4-20 x 1.0" LG SHCS	MCMMASTER-CARR
3	8	B-3	3.0" BASE	NEWPORT
2	2	D980328-00-D	WFS BASEPLATE	-
1	2	D980012-00-D	WFS ASSEMBLY	-
REF	QTY	PART NO.	DESCRIPTION	SUPPLIER

		UNLESS OTHERWISE SPECIFIED DIMENSIONS ARE IN INCHES												<b>LIGO</b> CALIFORNIA INSTITUTE OF TECHNOLOGY MASSACHUSETTS INSTITUTE OF TECHNOLOGY			
		TOLERANCES: FRACTIONAL ± 1/16(.16) ANGULAR ± 1° TWO PLACE DECIMAL ± .01(.025) THREE PLACE DECIMAL ± .005(.013)		FINISHED SURFACE RMS 63 BREAK CORNERS IN: OUT: .02 REMOVE ALL BURRS												IO SENSING TABLE ASSEMBLY WA-IOT7, WA-IOT1, LA-IOT1 - -	
		MATERIAL: -		HEAT TREAT: -		FINISH: -		00 PRE-RELEASE				MASON 7/9/98		CAD FILE D980327-00-S1.dwg D SIZE DWG. NO. D980327-00-D SCALE 1:16 SHEET 1 of 2			
DWG. NO.		DESCRIPTION		USED ON: -		NEXT ASS'Y: D980220-A-D		REV		DESCRIPTION		DCC SYS DET CDS VE CC BT CHECK DRWN DATE		ISSUE DESCRIPTION			



		UNLESS OTHERWISE SPECIFIED DIMENSIONS ARE IN INCHES													<b>LIGO</b> CALIFORNIA INSTITUTE OF TECHNOLOGY MASSACHUSETTS INSTITUTE OF TECHNOLOGY					
		TOLERANCES:		FINISHED SURFACE RMS												ID SENSING TABLE ASSEMBLY WA-IOT7, WA-IOT1, LA-IOT1				
		FRACTIONAL ± 1/16(.16)		63												-				
		ANGULAR ± 1°		BREAK CORNERS IN: .02												-				
		TWO PLACE DECIMAL ± .01(.025)		REMOVE ALL BURRS												-				
		THREE PLACE DECIMAL ± .005(.013)														-				
		MATERIAL:	HEAT TREAT:	FINISH:	00	PRE-RELEASE											MASON	7/9/98		
DWG. NO.		-	-	-	REV	DESCRIPTION	DCC	SYS	DET	CDS	VE	CC	BT	CHECK	DRWN	DATE	CAD FILE	SIZE	DWG. NO.	
REFERENCE DRAWINGS		USED ON: -	NEXT ASS'Y:	D980220-A-D													D980327-0-S2.dwg	D	D980327-00-D	
																	SCALE	1:16	SHEET	2 of 2