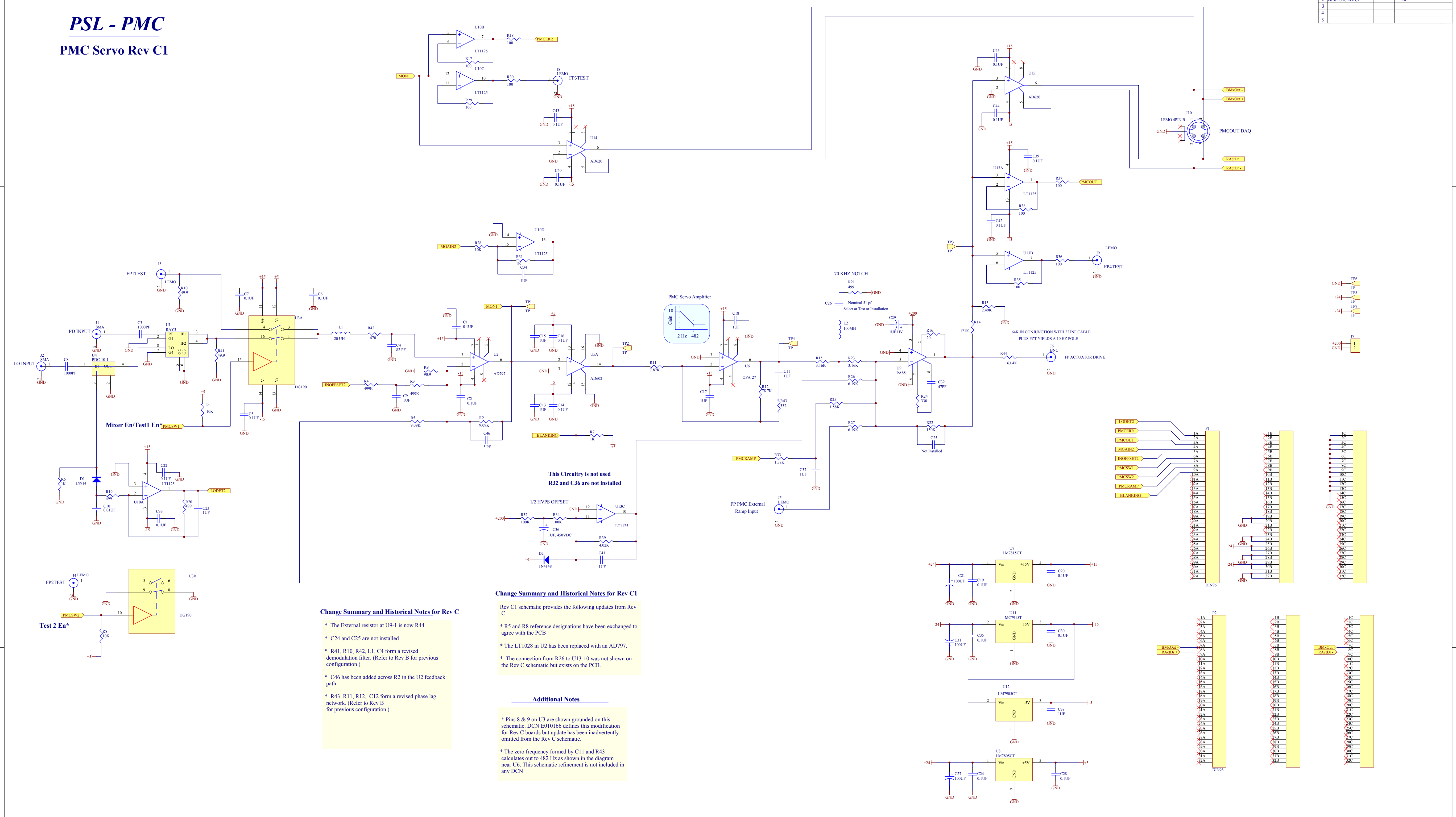


PSL - PMC

PMC Servo Rev C1

Engineering Change Order History		
ECO number	Date	Originator
1	E010166 to Rev C	RK
2	E010223 to Rev C1	RK
3		
4		
5		



Change Summary and Historical Notes for Rev C

- * The External resistor at U9-1 is now R44.
- * C24 and C25 are not installed
- * R41, R10, R42, L1, C4 form a revised demodulation filter. (Refer to Rev B for previous configuration.)
- * C46 has been added across R2 in the U2 feedback path.
- * R43, R11, R12, C12 form a revised phase lag network. (Refer to Rev B for previous configuration.)

Change Summary and Historical Notes for Rev C1

Rev C1 schematic provides the following updates from Rev C.

- * R5 and R8 reference designations have been exchanged to agree with the PCB
- * The LT1028 in U2 has been replaced with an AD797.
- * The connection from R26 to U13-10 was not shown on the Rev C schematic but exists on the PCB.

Additional Notes

- * Pins 8 & 9 on U3 are shown grounded on this schematic. DCN E010166 defines this modification for Rev C boards but update has been inadvertently omitted from the Rev C schematic.
- * The zero frequency formed by C11 and R43 calculates out to 482 Hz as shown in the diagram near U6. This schematic refinement is not included in any DCN

This Circuitry is not used
R32 and C36 are not installed

REV	DATE	DRAWN BY	CHECKED BY	DCC	DCN / DESCRIPTION
C1	Nov 6 2001				E010223