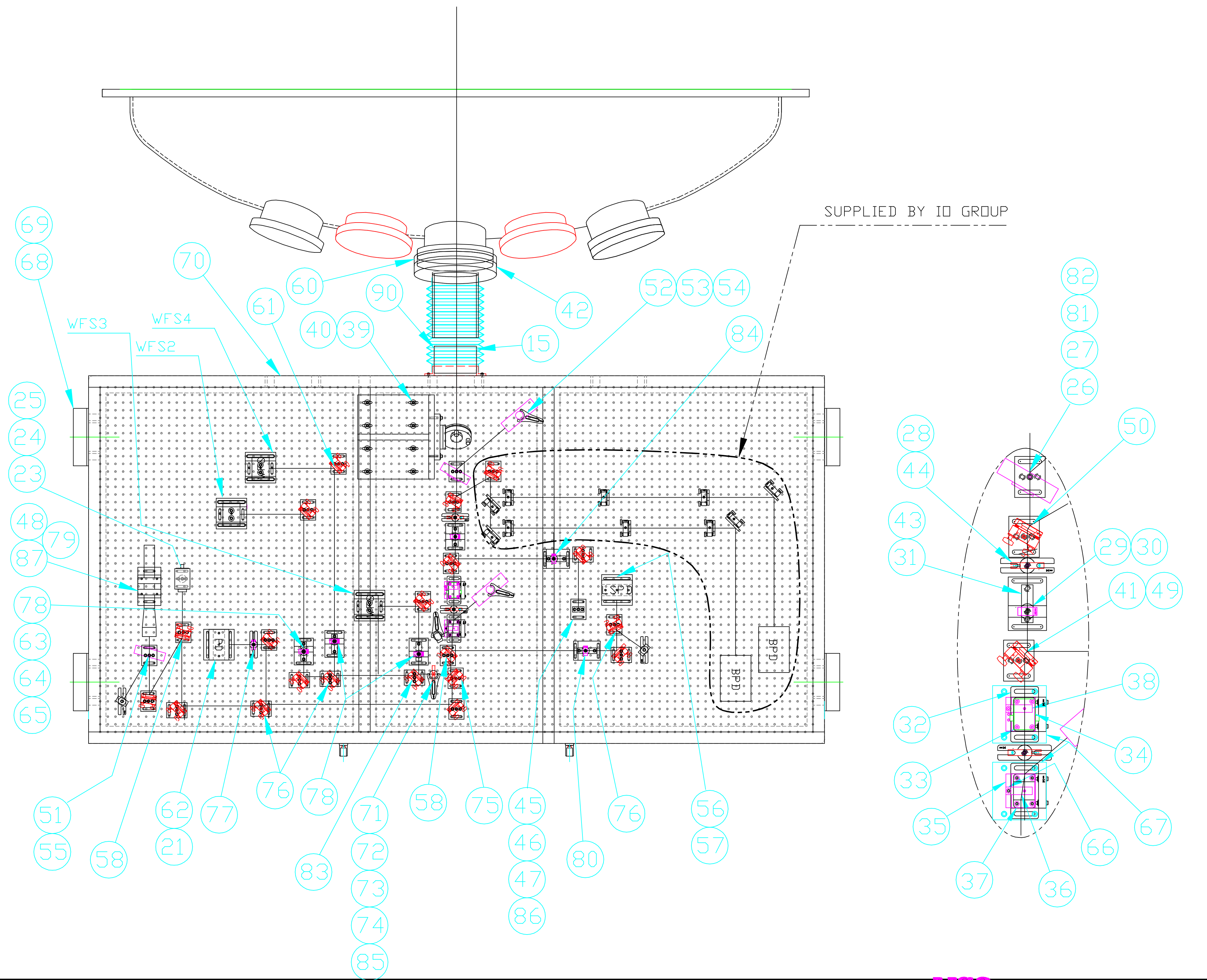


92	1	D990197-A-D	VIEWPORT PLATE	-
91	2	D990672-A-D	VIEWPORT SPACER PLATE	-
90	8	92311A194	8-32 x .5 LG SOCKET HEAD SET SCREW	MCMMASTER-CARR
89	4	P1010	SPRING NUT	UNISTRUT
88	A/R	P1000	CHANNEL	UNISTRUT
87	1	D980498-0-D	SPECTRUM ANALYZER RISER	-
86	1	SP-2	POST	NEWPORT
85	1	9910	PEDESTAL BASE	NEW FOCUS
84	1	PLCX-25.4-206.0-C-1064	LENS	CVI
83	1	10B20NC.3	BEAM SAMPLER	NEWPORT
82	2	710C-17'	17' CABLE	UNIBLITZ
81	2	D122	POWER SUPPLY	UNIBLITZ
80	1	PLCC-25.4-257.5-C-1064	LENS	CVI
79	1	LM-1	LASER MOUNT	AEROTECH
78	3	BICC-25.4-77.6-C-1064	LENS	CVI
77	1	PLCX-25.4-38.6-C-1064	LENS	CVI
76	3	10B20NP.29	50/50 BEAMSPLITTER	NEWPORT
75	1	BSI-1064-80-1025-45P	80/20 BEAMSPLITTER	CVI
74	1	D980346-A-D	2.375" PEDESTAL	-
73	1	LH1-100R	THREADED HOLDER	NEWPORT
72	1	LM-1R	POLARIZER MOUNT	NEWPORT
71	1	10RP12	HALF WAVEPLATE	NEWPORT
70	2	D980469-A-D	COVER PLATE	-
69	8	D980468-A-D	FFEDTHRU PLATE	-
68	A/R	8694K89	SPONGE RUBBER	MCMMASTER-CARR
67	1	517-1100	BNC CONNECTOR	NEWARK
66	1	D980342-A-D	PRISM BLOCK	-
65	6	9025	TRACK CARRIER	NEW FOCUS
64	6	9022	TRACK	NEW FOCUS
63	6	9021	BASE PLATE	NEW FOCUS
62	1	I811-FS-AC	PHOTODETECTOR	NEW FOCUS
61	3	8807	MOTORIZED CENTER MOUNT	NEW FOCUS
60	1	D970197-A-D	VIEWPORT ADAPTER	-
59	11	5104	MIRROR	NEW FOCUS
58	2	BSI-1064-90-1025-45P	BEAMSPLITTER	CVI
57	1	D980340-A-D	LSC PHOTODIODE MOUNT	-
56	1	D980345-A-D	RISER BLOCK	-
55	3	LB1	BEAM BLOCK	THORLABS
54	2	BT500	BEAM DUMP	THORLABS
53	4	9909	HOLDING FORK	NEW FOCUS
52	4	9956	3.0" PEDESTAL	NEW FOCUS
51	5	VPH-2	POST HOLDER	NEWPORT
50	1	W1-PW1-1037-UV-1064-45S	LASER WINDOW	CVI
49	1	W2-PW1-1025-C-1064-45P	LASER WINDOW	CVI
48	1	MODEL 216	OPTICAL SPECTRUM ANALYZER	COHERENT
47	2	SM1C	CAMERA 'C' MOUNT ADAPTER	THORLABS
46	1	NDK01	ND FILTER KIT	THORLABS
45	1	PDA255	PHOTODETECTOR	THORLABS
44	2	ID-1.0	IRIS DIAPHRAGM	NEWPORT
43	6	84975A13	8-32 SPRING PLUNGER	MCMMASTER-CARR
42	1	D980394-A-D	VIEWPORT ADAPTER, TUBE	-
41	A/R	92196A197	8-32 x 3/4" SHCS	MCMMASTER CARR
40	A/R	92141A029	1/4" FLAT WASHERS	MCMMASTER CARR
39	A/R	92196A544	1/4-20 x 1.25 SHCS	MCMMASTER CARR
38	1	D980337-A-D	EDS CONNECTOR	-
37	1	MGLB-12	BREWSTER ANGLE POLARIZER W. HOUSING	KARL LAMBRECT
36	1	D980344-A-D	POLARIZER CLAMP	-
35	1	D980343-A-D	POLARIZER MOUNT	-
34	1	3903-1064	ELECTRO-OPTIC SHUTTER	LASER METRICS
33	1	D980336-A-D	EDS MOUNT	-
32	2	9071	KINEMATIC STAGE	NEW FOCUS
31	6	D980335-A-D	PEDESTAL 2.250"	-
30	1	PLCX-25.4-515.1-C-1064	1016.7 FL LENS	CVI
29	6	LH100	LENS MOUNT	NEWPORT
28	5	9912	BASEPLATE	NEW FOCUS
27	2	D980334-A-D	SHUTTER PEDESTAL	-
26	2	VS25S2ZD	SAFETY SHUTTER	UNIBLITZ
25	1	-	CAMERA FILTER	-
24	1	XC-75	CAMERA	SONY
23	1	D980494-A-D	CAMERA MOUNT	-
22	20	U100-A28	MIRROR MOUNT	NEWPORT
21	22	D980333-A-D	2.635" PEDESTAL	-
20	25	B-2	2.0" BASE	NEWPORT
19	1	TBC-48	TIE BAR/CASTERS	NEWPORT
18	1	NN4-28-TC	FIXED LEG SYSTEM	NEWPORT
17	1	RS4000-48-12	TABLE	NEWPORT
16	1	D980332-A-D	ISC TABLE ENCLOSURE	-
15	1	D970198-A-D	BEAM TUBE	-
14	1	CT-6	BELLOWS	A & A MFG.
13	4	D990503-A-D	MOUNTING BRACKET, ENCLOSURE	-
12	1	D980206-A-D	SEAL MOUNT	-
11	2	-	50.8 MM MIRROR	RED
10	2	SL51BM	OPTIC MOUNT	NEWPORT
9	2	D980331-A-D	SPACER BLOCK	-
8	2	D980330-A-D	VERTICAL ADJUST PLATE	-
7	1	D980329-A-D	PERISCOPE SUPPORT STRUCTURE	-
6	A/R	7648A35	KAPTON INSULATION TAPE	MCMMASTER-CARR
5	8	17455-D-1	INSULATING BUSHING	ACCURATE SCREW MACH.
4	A/R	92196A542	1/4-20 x 1.0" LG SHCS	MCMMASTER-CARR
3	5	B-3	3.0" BASE	NEWPORT
2	3	D980328-A-D	WFS BASEPLATE	-
1	3	D980012-A-D	WFS ASSEMBLY	-
REF	QTY	PART NO.	DESCRIPTION	SUPPLIER

NOTES:

1. ITEM 15 TO BE ADDED AND CUT TO FIT AT ASSEMBLY, IF RQD TO HOLD ITEM 14.



DWG. NO.	DESCRIPTION
7	REFERENCE DRAWINGS

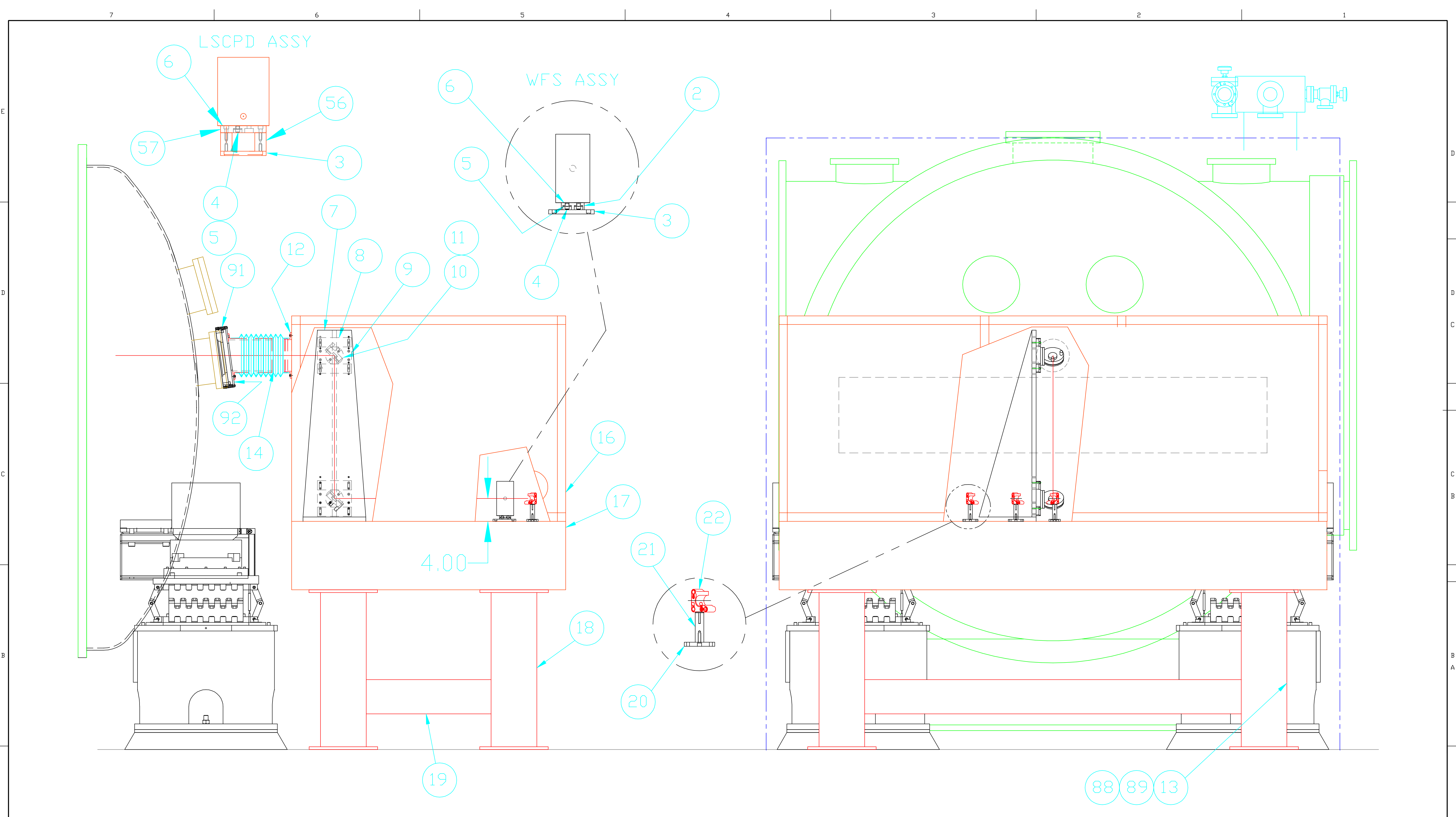
UNLESS OTHERWISE SPECIFIED DIMENSIONS ARE IN INCHES		
TOLERANCES: FRACTIONAL ± 1/16(16) ANGULAR ± 1° TWO PLACE DECIMAL ± .01(.025) THREE PLACE DECIMAL ± .005(.013)	FINISHED SURFACE RMS BREAK CORNERS IN: OUT: .02 REMOVE ALL BURRS	
MATERIAL:	HEAT TREAT:	FINISH:
USED ON: -	NEXT ASS'Y: D980220-A-D	

A	INITIAL RELEASE	MASON	3/00								
00	PRE-RELEASE	MASON	1/14/99								
REV	DESCRIPTION	DCC	SYS	DET	CDS	VE	CC	BT	CHECK	DRWN	DATE
ISSUE DESCRIPTION											

LIGO
CALIFORNIA INSTITUTE OF TECHNOLOGY
MASSACHUSETTS INSTITUTE OF TECHNOLOGY

ISC TABLE ASSEMBLY
WA-ISCT7
REFLECTED PORT

CAD FILE: D980493-A-S1.dwg
SCALE: 1:8
SIZE/DWG. NO.: D
D980493-A-D
SHEET: 1 of 2



		UNLESS OTHERWISE SPECIFIED DIMENSIONS ARE IN INCHES													LIGO CALIFORNIA INSTITUTE OF TECHNOLOGY MASSACHUSETTS INSTITUTE OF TECHNOLOGY																		
		TOLERANCES:		FINISHED SURFACE RMS												ISC TABLE ASSEMBLY WA-ISCT7 -																	
		FRACTIONAL ± 1/16(.16)		63																													
		ANGULAR ± 1°		BREAK CORNERS IN: .02												CAD FILE: D980493-0-S2.dwg D SIZE: D980493-0-D																	
		TWO PLACE DECIMAL ± .01(.025)		REMOVE ALL BURRS																													
		THREE PLACE DECIMAL ± .005(.013)														DATE: 1/14/99																	
DWG. NO.		MATERIAL:		HEAT TREAT:		FINISH:		A		DCC		SYS		DET		CDS		VE		CC		BT		CHECK		DRWN		DATE		SCALE		SHEET	
		USED ON: -		NEXT ASSY: D980220-A-D				00		INITIAL RELEASE		PRE-RELEASE																1:8		2 of 2			