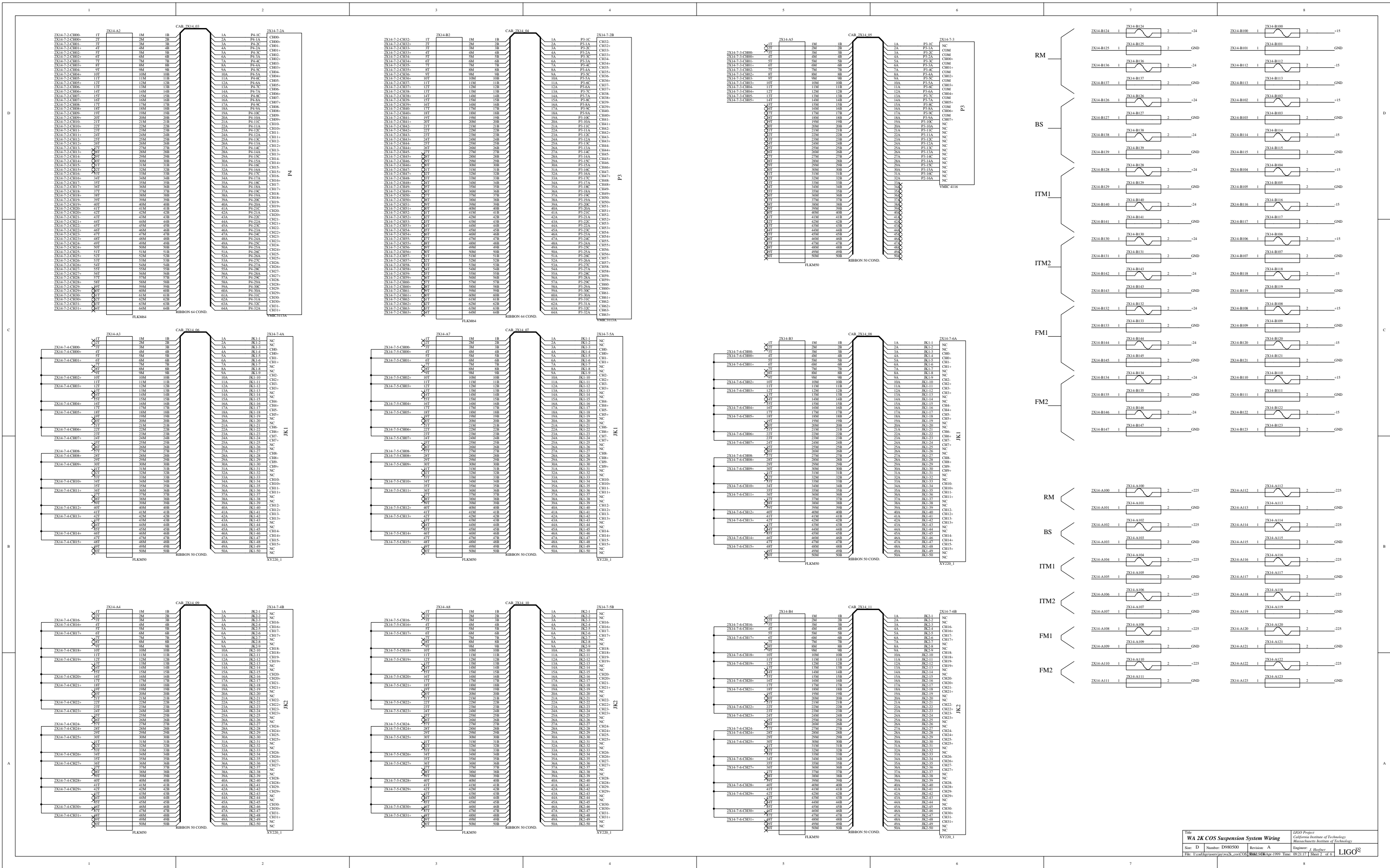
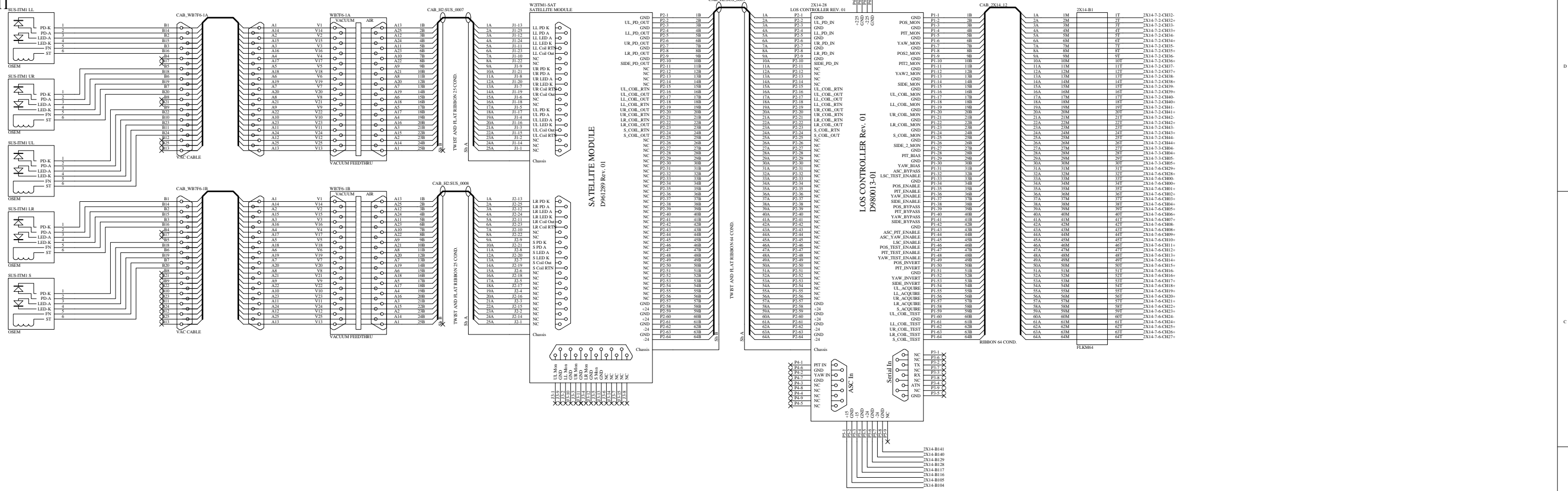




Notes:
 1. 2X14-7-2 is VMIC 3113A ADC module.
 2. 2X14-7-3 is VMIC 4100 DAC module.
 3. 2X14-7-4 is XYCOM XY 220 binary out module.
 4. 2X14-7-5 is XYCOM XY 220 binary out module.
 5. 2X14-7-6 is XYCOM XY 220 binary out module.
 6. See Sheet 2 for net connections.

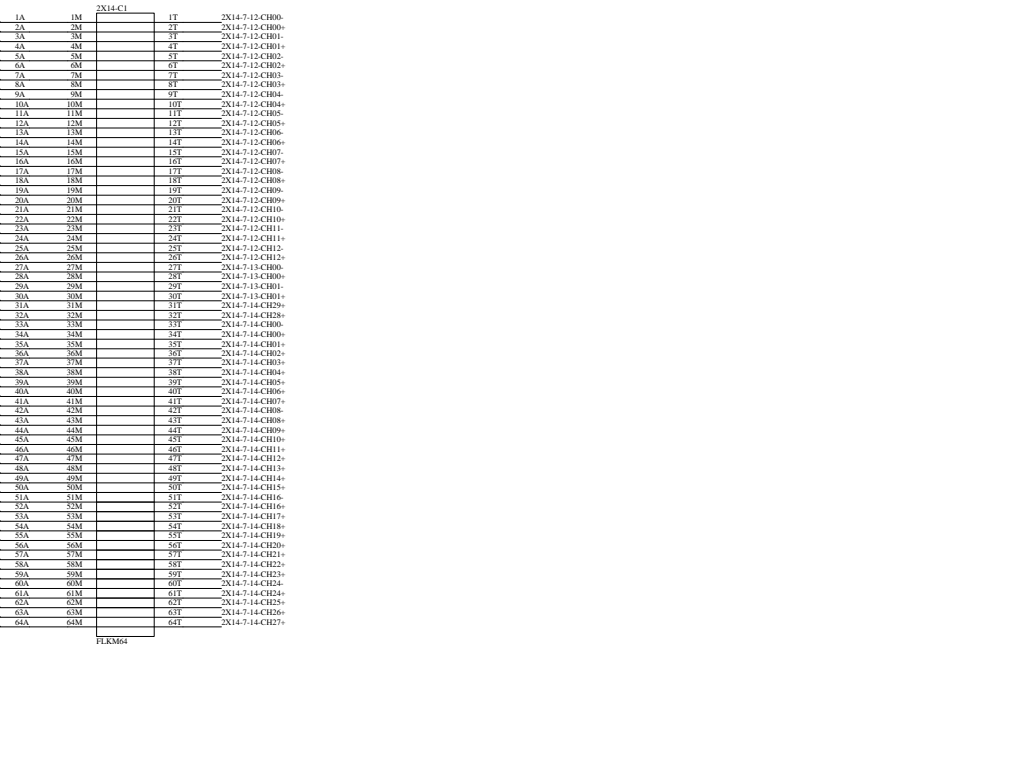
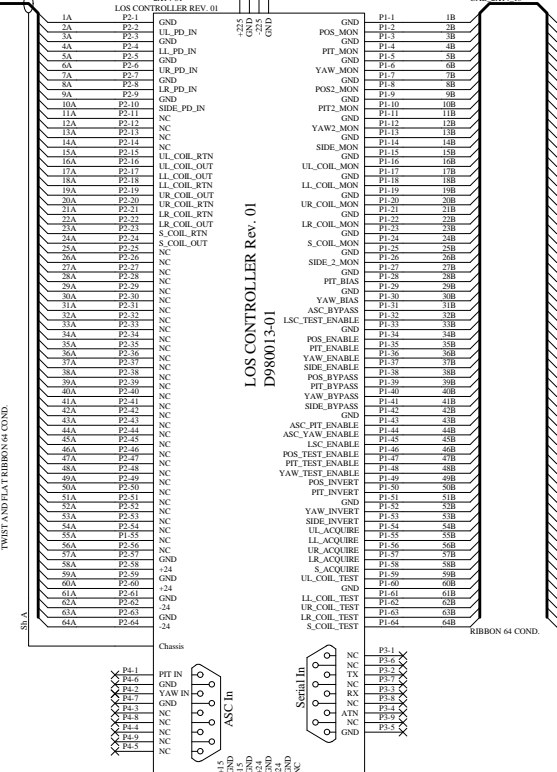
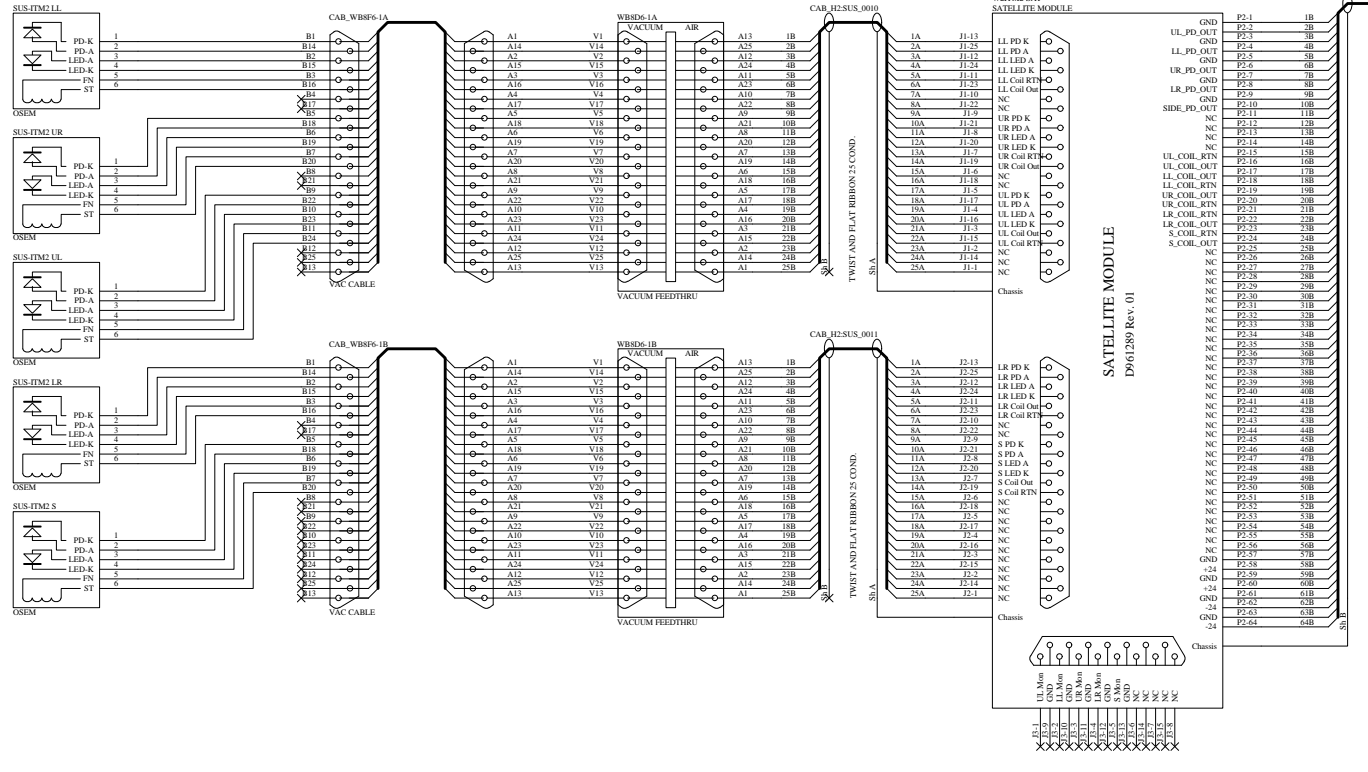


ITM1

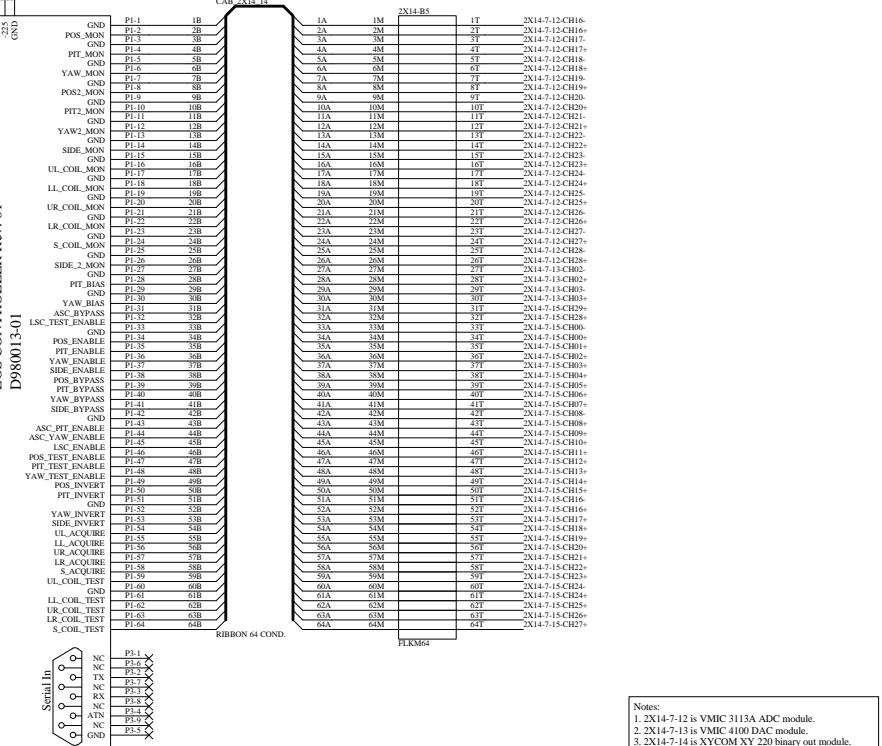
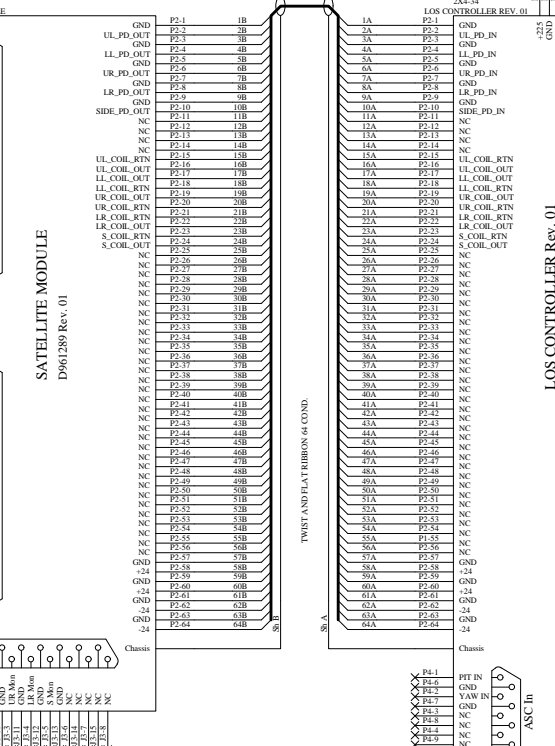
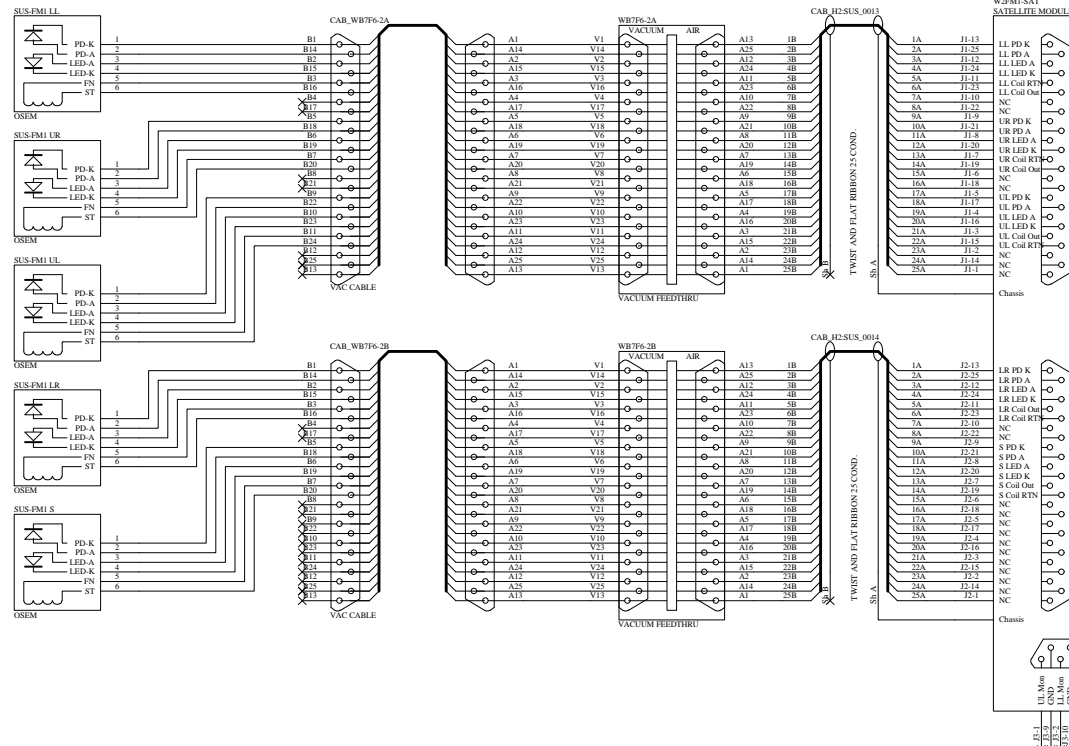


Notes:
 1. 2X14-7-2 is VMIC 3113A ADC module.
 2. 2X14-7-3 is VMIC 4100 DAC module.
 3. 2X14-7-4 is XYCOM XY 220 binary out module.
 4. 2X14-7-5 is XYCOM XY 220 binary out module.
 5. 2X14-7-6 is XYCOM XY 220 binary out module.
 6. See sheet 2 for net connections.

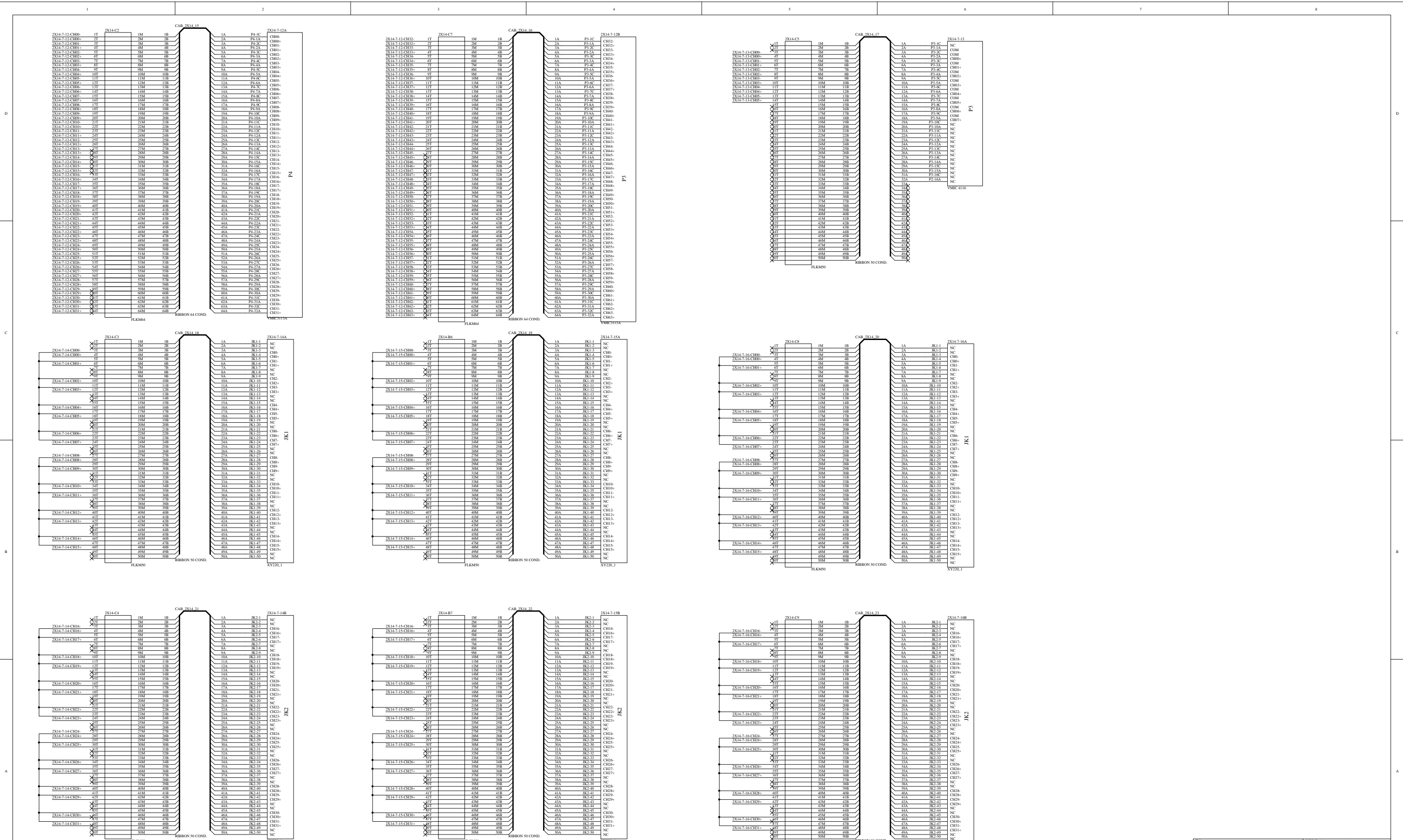
ITM2



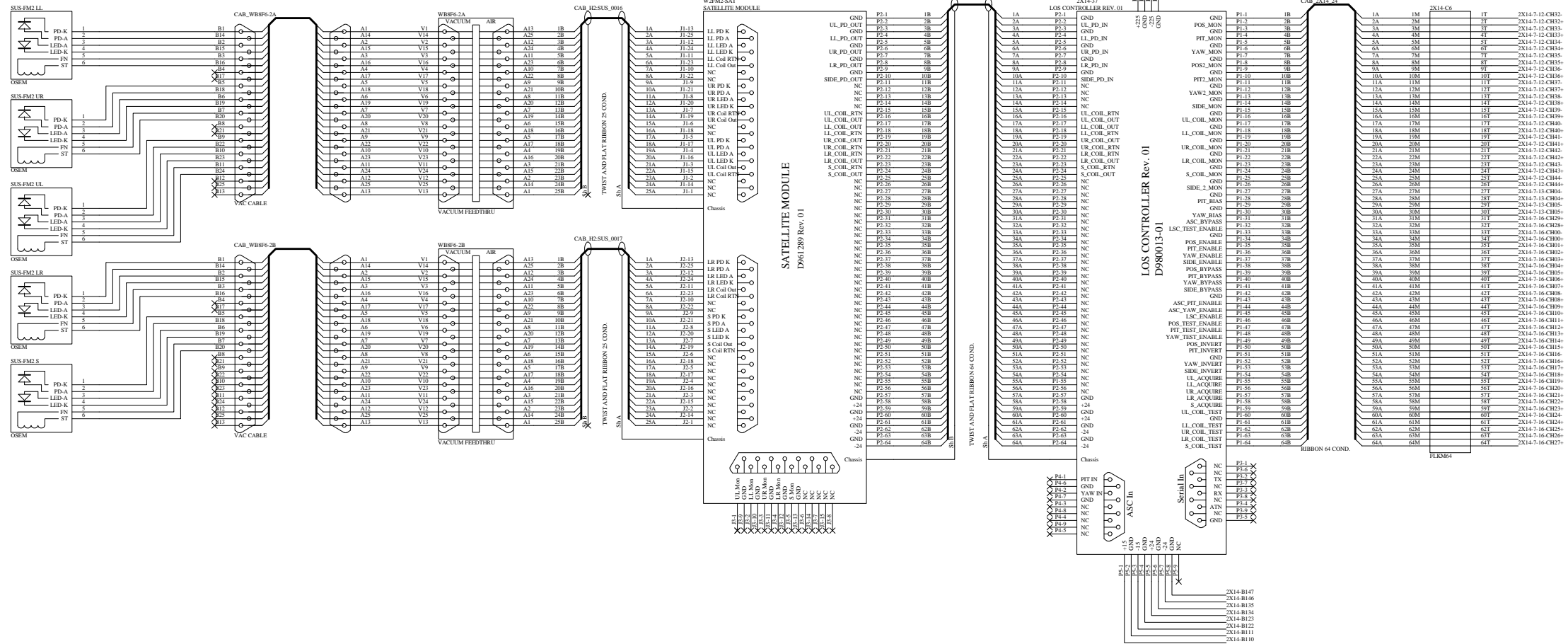
FM1



Notes:
 1. 2X14-7-12 is VMIC 3113A ADC module.
 2. 2X14-7-13 is VMIC 4100 DAC module.
 3. 2X14-7-14 is XVCOM XY 220 binary out module.
 4. 2X14-7-15 is XVCOM XY 220 binary out module.
 5. 2X14-7-16 is XVCOM XY 220 binary out module.
 6. See sheet 5 for net connections.



FM2



Notes:
 1. 2X14-7-12 is VMC 3113A ADC module.
 2. 2X14-7-13 is VMC 4100 DAC module.
 3. 2X14-7-14 is XYCOM XY 220 binary out module.
 4. 2X14-7-15 is XYCOM XY 220 binary out module.
 5. 2X14-7-16 is XYCOM XY 220 binary out module.
 6. See sheet 5 for net connections.



1 2 3 4 5 6 7 8

D

D

C

C

B

B

A

A

COS_SUS1
COS_SUS1.SCH

COS_SUS2
COS_SUS2.SCH

COS_SUS3
COS_SUS3.SCH

COS_SUS4
COS_SUS4.SCH

COS_SUS5
COS_SUS5.SCH

COS_SUS6
COS_SUS6.SCH

1 2 3 4 5 6 7 8