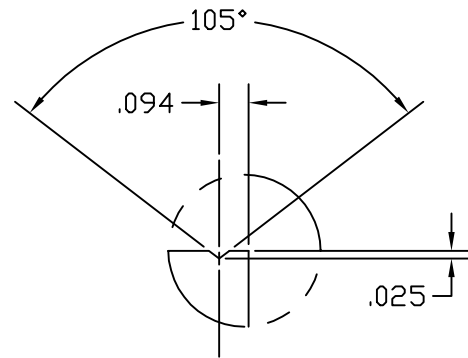
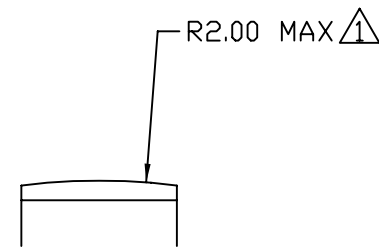
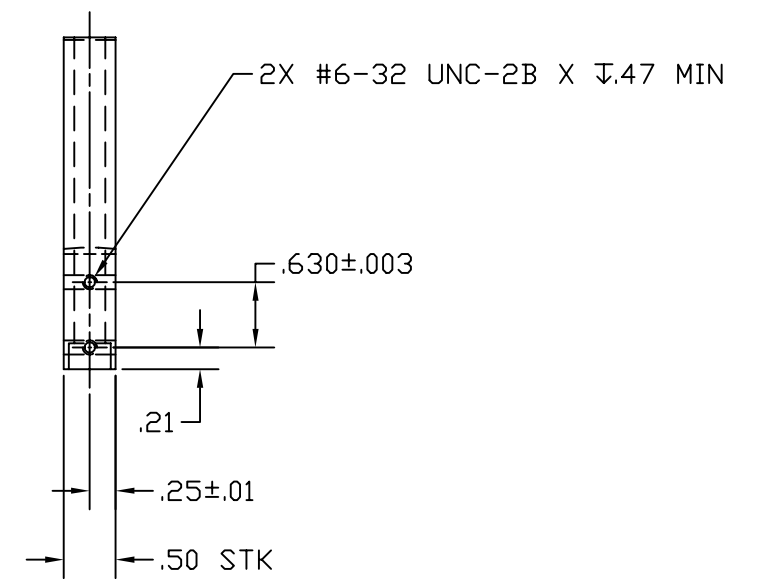
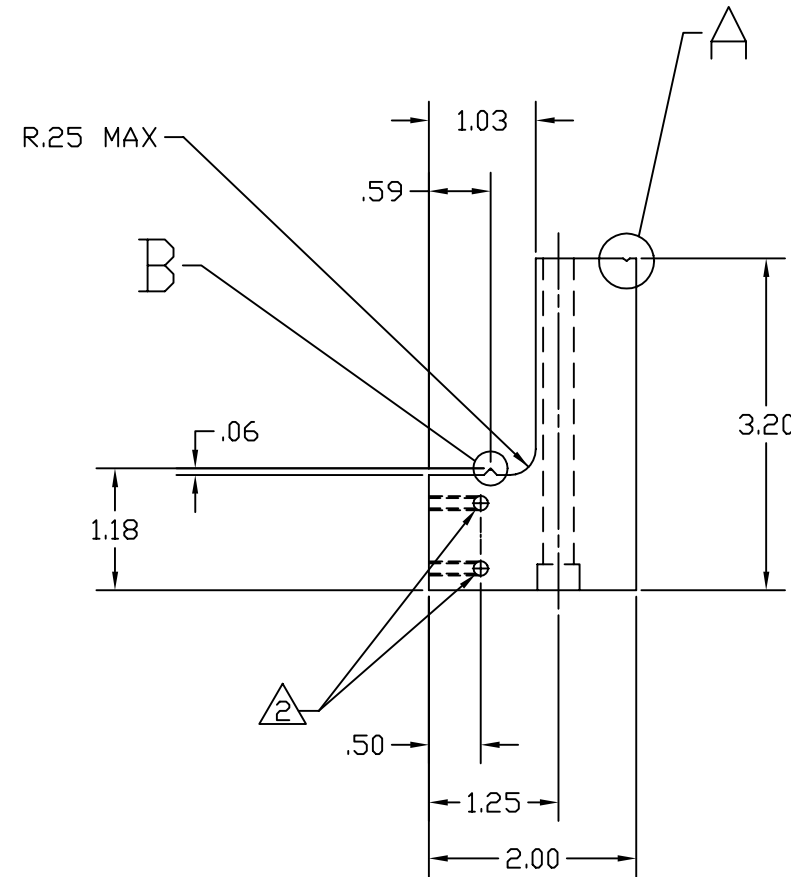


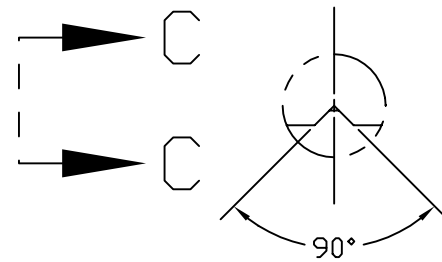
- NOTES: (UNLESS OTHERWISE SPECIFIED)
- 1. \triangle .02 MAX FLAT AT HIGHEST POINT OF RADIUS.
 - 2. \triangle \emptyset .140-.156 VENT HOLE. DRILL THRU WHERE SHOWN ON CENTERLINE OF TAPPED HOLE.
 - 3. STAMP OR ENGRAVE SERIAL NUMBER ON PART PER LIGD L970196.
 - 4. ALL MACHINING FLUIDS SHALL BE WATER SOLUBLE AND FREE OF SULFUR, CHLORINE, AND SILICONE, SUCH AS CINCINNATI MILACRON'S CIMTECH 410 (STAINLESS STEEL).



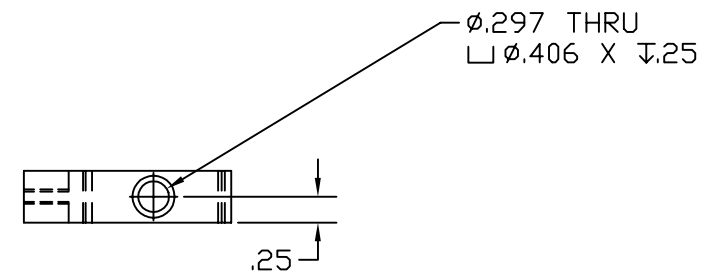
DETAIL A



SECTION C-C



DETAIL B



		UNLESS OTHERWISE SPECIFIED DIMENSIONS ARE IN INCHES							LIGO CALIFORNIA INSTITUTE OF TECHNOLOGY MASSACHUSETTS INSTITUTE OF TECHNOLOGY		
		TOLERANCES: FRACTIONAL ± ANGULAR ±1° ANGULAR MACH ± BEND ± TWO PLACE DECIMAL ±.03		THREE PLACE DECIMAL ±.005 FINISHED SURFACE RMS BREAK CORNERS IN: .005-.010 REMOVE ALL BURRS						ELLIPTICAL BAFFLE CLAMP BRACKET	
		MATERIAL: 300 SERIES STAINLESS STEEL	HEAT TREAT:	FINISH:	A	DCN E990107	CONLEY	1-18-99		CAD FILE D990003-Adwg	SIZE/DWG. NO. B D990003-A
DWG. NO.	DESCRIPTION	USED ON:	NEXT ASS'Y: D990002	REV	DESCRIPTION	DRWN	DATE	CHECK	DATE	SCALE NTS	SHEET 1 OF 1
REFERENCE DRAWINGS				ISSUE DESCRIPTION							