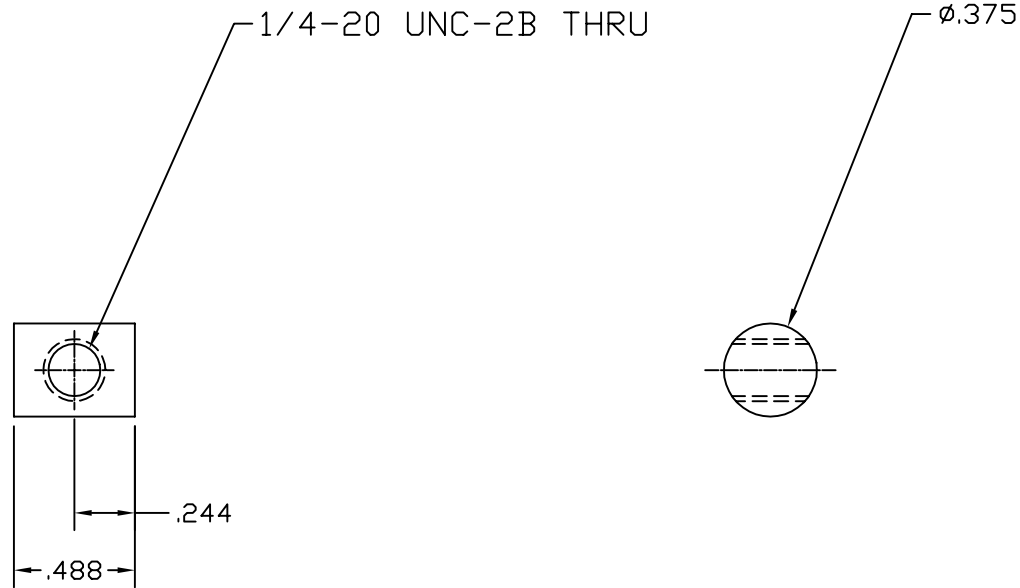


- NOTES: (UNLESS OTHERWISE SPECIFIED)
1. MATERIAL: 300 SERIES STAINLESS STEEL
 2. ALL MACHINING FLUIDS SHALL BE WATER SOLUBLE AND FREE OF SULFUR, CHLORINE, AND SILICONE; SUCH AS CINCINNATI MILACRON'S CIMTECH 410 (STAINLESS STEEL).



<p>UNLESS OTHERWISE SPECIFIED DIMENSIONS ARE IN INCHES</p> <p>TOLERANCES: FRACTIONAL ± ANGULAR ± 0.5° ANGULAR MACH ± BEND ± TWO PLACE DECIMAL ± .03</p> <p>THREE PLACE DECIMAL ± .005 FINISHED SURFACE 32 microinch average BREAK CORNERS IN: .005-.010 REMOVE ALL BURRS</p>								<p>LIGO CALIFORNIA INSTITUTE OF TECHNOLOGY MASSACHUSETTS INSTITUTE OF TECHNOLOGY</p>	
								<p>ELLIPTICAL BAFFLE SWIVEL NUT</p>	
<p>MATERIAL: </p>		<p>HEAT TREAT:</p>		<p>FINISH:</p>		<p>A DCN E990107</p>		<p>C. Conley 1-19-99</p>	
<p>USED ON:</p>		<p>NEXT ASS'Y: D990002</p>		<p>REV</p>		<p>DESCRIPTION</p>		<p>CHECK DATE DRWN DATE</p>	
				<p>ISSUE DESCRIPTION</p>				<p>SCALE NTS</p>	
								<p>SHEET 1 OF 1</p>	