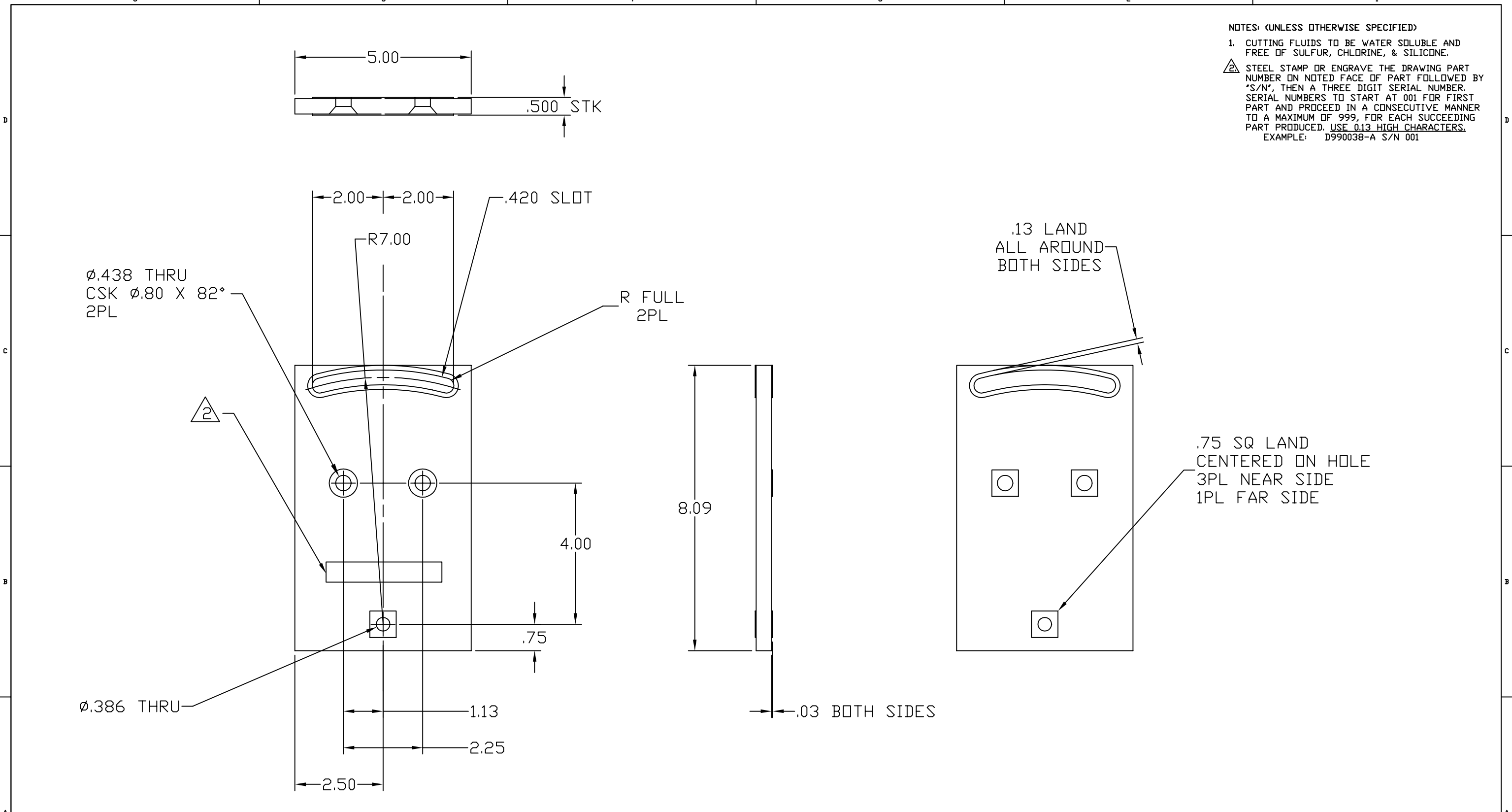


NOTES: (UNLESS OTHERWISE SPECIFIED)

- CUTTING FLUIDS TO BE WATER SOLUBLE AND FREE OF SULFUR, CHLORINE, & SILICONE.

△ STEEL STAMP OR ENGRAVE THE DRAWING PART NUMBER ON NOTED FACE OF PART FOLLOWED BY "S/N", THEN A THREE DIGIT SERIAL NUMBER. SERIAL NUMBERS TO START AT 001 FOR FIRST PART AND PROCEED IN A CONSECUTIVE MANNER TO A MAXIMUM OF 999, FOR EACH SUCCEEDING PART PRODUCED. USE 0.13 HIGH CHARACTERS.
EXAMPLE: D990038-A S/N 001



		UNLESS OTHERWISE SPECIFIED DIMENSIONS ARE IN INCHES				LIGO CALIFORNIA INSTITUTE OF TECHNOLOGY MASSACHUSETTS INSTITUTE OF TECHNOLOGY																	
		TOLERANCES: FRACTIONAL ± ANGULAR ± ANGULARMACH ± BEND ± TWO PLACE DECIMAL ±.01		THREE PLACE DECIMAL ±.005 FINISHED SURFACE RMS BREAK CORNERS IN: OUT: .005-.010 REMOVE ALL BURRS		<table border="1"> <tr> <td>D</td> <td>DCN E990209</td> <td>Conley</td> <td>6-1-99</td> </tr> <tr> <td>C</td> <td>DCN E990209</td> <td>Conley</td> <td>5-13-99</td> </tr> <tr> <td>B</td> <td>DCN E990205</td> <td>Conley</td> <td>5-6-99</td> </tr> <tr> <td>A</td> <td>DCN E990108</td> <td>Conley</td> <td>3-16-99</td> </tr> </table>		D	DCN E990209	Conley	6-1-99	C	DCN E990209	Conley	5-13-99	B	DCN E990205	Conley	5-6-99	A	DCN E990108	Conley	3-16-99
D	DCN E990209	Conley	6-1-99																				
C	DCN E990209	Conley	5-13-99																				
B	DCN E990205	Conley	5-6-99																				
A	DCN E990108	Conley	3-16-99																				
MATERIAL: 6061-T6 ALU PLATE .500" THICK		HEAT TREAT:		FINISH:		<table border="1"> <tr> <td>CAD FILE</td> <td>D990140-D.dwg</td> <td>SIZE</td> <td>DWG. NO. B</td> </tr> <tr> <td>SCALE</td> <td>NTS</td> <td>SHEET</td> <td>1 OF 1</td> </tr> </table>		CAD FILE	D990140-D.dwg	SIZE	DWG. NO. B	SCALE	NTS	SHEET	1 OF 1								
CAD FILE	D990140-D.dwg	SIZE	DWG. NO. B																				
SCALE	NTS	SHEET	1 OF 1																				
DWG. NO.	DESCRIPTION	USED ON:	NEXT ASS'Y: D990141	REV	DESCRIPTION	APPR'D	CHECK	DRWN	DATE														
REFERENCE DRAWINGS				ISSUE DESCRIPTION																			