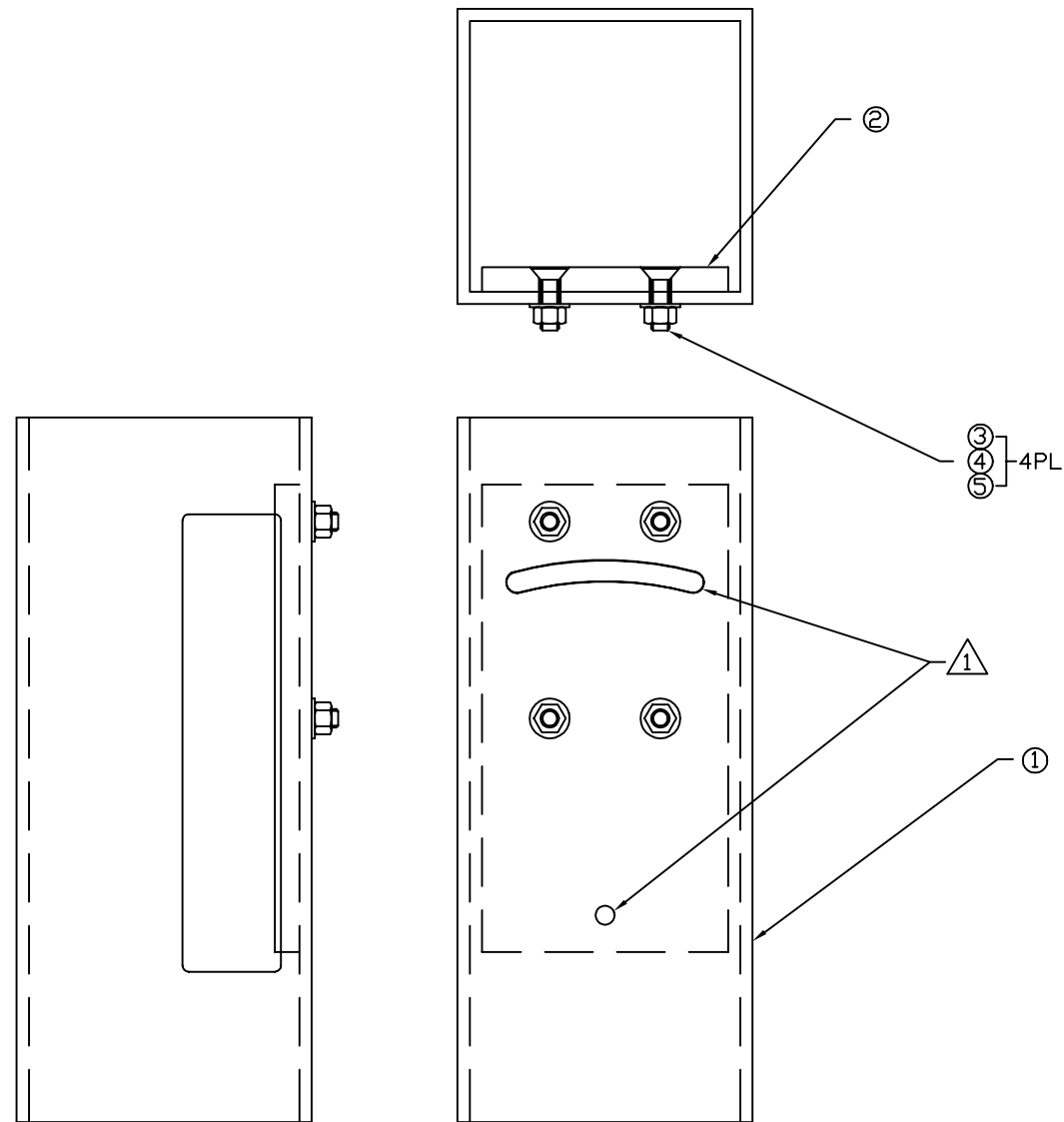


NOTES: (UNLESS OTHERWISE SPECIFIED)
 △ ALIGN NOTED MATING FEATURES IN ITEMS 1 & 2 AS FOLLOWS:
 ALIGN HOLES USING A SIZE V OR W DRILL ROD OR EQUIVALENT. ROTATE SLOTS INTO ALIGNMENT BY EYE, THEN FASTEN HARDWARE.



5	4	McM-Carr 98019A399	.406 ID X .812 OD X .051-.080 THICK FLAT WASHER	300 SERIES ST STEEL
4	4	McM-Carr 94804A320	3/8-16 HEX NUT	316 ST STEEL
3	4	McM-Carr 91500A626	3/8-16 X 1.25 PHILLIPS FLAT HEAD SCREW	316 ST STEEL
2	1	D990140	HOUSING PLATE	-
1	1	D990138	HOUSING TUBE	-
REF.	QTY.	PART or DRWG No.	NOMENCLATURE or DESCRIPTION	MATERIAL

PARTS and MATERIAL LIST

		UNLESS OTHERWISE SPECIFIED DIMENSIONS ARE IN INCHES							LIGO CALIFORNIA INSTITUTE OF TECHNOLOGY MASSACHUSETTS INSTITUTE OF TECHNOLOGY		
		TOLERANCES: FRACTIONAL ± ANGULAR ± ANGULAR MACH ± BEND ± TWO PLACE DECIMAL		THREE PLACE DECIMAL FINISHED SURFACE RMS BREAK CORNERS IN OUT REMOVE ALL BURRS						CAVITY BEAM DUMP HOUSING ASSEMBLY (SINGLE)	
		MATERIAL:	HEAT TREAT:	FINISH:	A	DCN E990133	Conley	3-17-99	CAD FILE	SIZE DWG. NO.	D990141-A
DWG. NO.	DESCRIPTION	USED ON:	NEXT ASS'Y:	B990145	REV	DESCRIPTION	APPR'D	CHECK	DRWN	DATE	SCALE
REFERENCE DRAWINGS					ISSUE DESCRIPTION						SHEET 1 OF 1

6 5 4 3 2 1

D
C
B
A

D
C
B
A

6 5 4 3 2 1