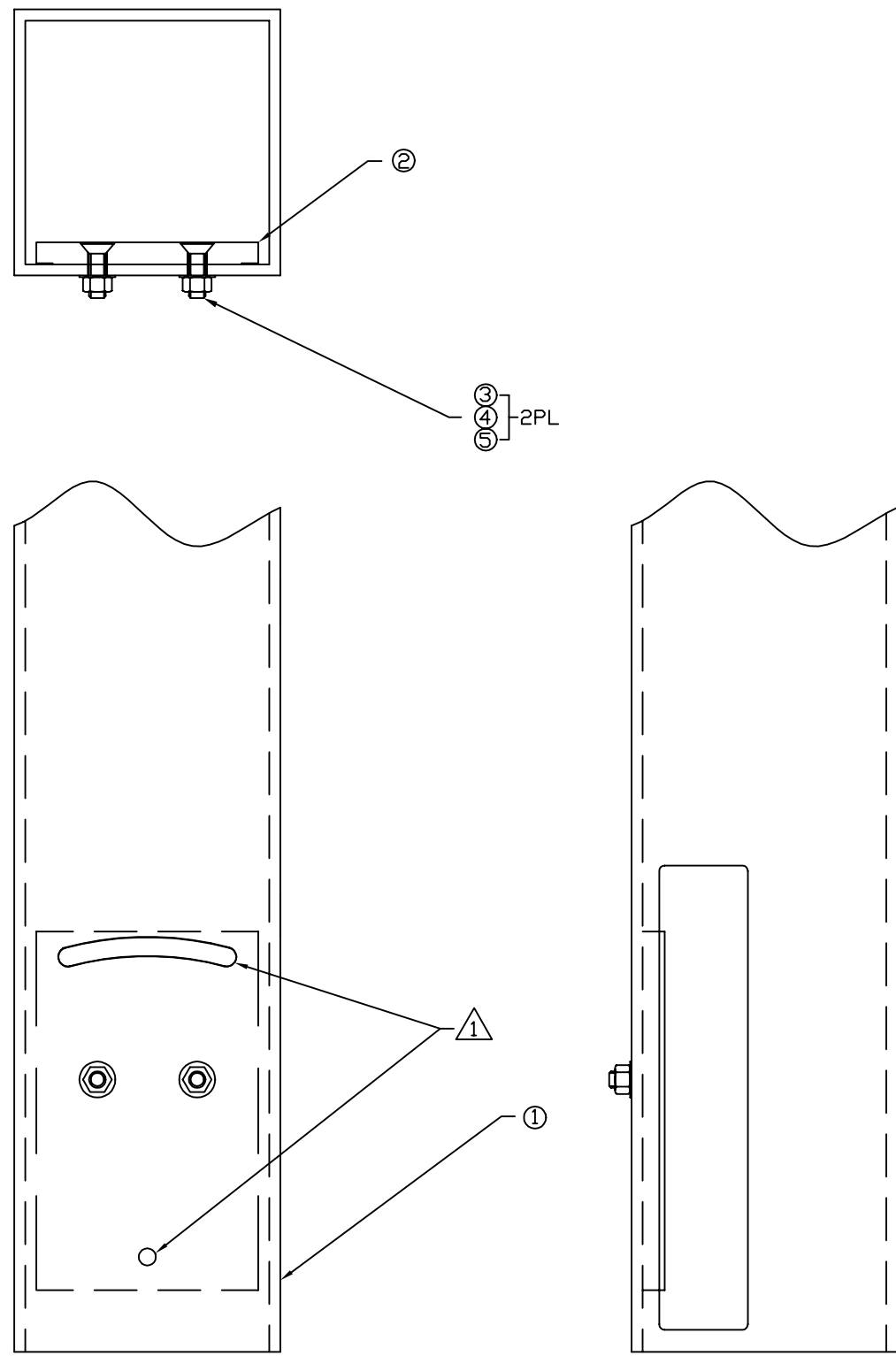


NOTES: (UNLESS OTHERWISE SPECIFIED)
 △ ALIGN NOTED MATING FEATURES IN ITEMS
 1 & 2 AS FOLLOWS:
 ALIGN HOLES USING A SIZE V (Ø.377) OR
 W (Ø.386) DRILL ROD OR EQUIVALENT. ROTATE
 SLOTS INTO ALIGNMENT BY EYE, THEN FASTEN
 HARDWARE.



REF.	QTY.	PART or DRWG No.	NOMENCLATURE or DESCRIPTION	MATERIAL
5	2	U-C Components WFV-38	.39 ID X .625 OD X .032 THICK FLAT WASHER	18-8 ST STEEL
4	2	McM-Carr 94804A320	3/8-16 HEX NUT	316 ST STEEL
3	2	McM-Carr 90585A626	3/8-16 X 1.25 SOCKETED FLAT HEAD SCREW	316 ST STEEL
2	1	D990140	HOUSING PLATE	-
1	1	-	HOUSING TUBE	-

PARTS and MATERIAL LIST

		UNLESS OTHERWISE SPECIFIED DIMENSIONS ARE IN INCHES			LIGO CALIFORNIA INSTITUTE OF TECHNOLOGY MASSACHUSETTS INSTITUTE OF TECHNOLOGY			
		TOLERANCES: FRACTIONAL ± ANGULAR ± ANGULAR MACH ± BEND ± TWO PLACE DECIMAL		THREE PLACE DECIMAL FINISHED SURFACE RMS BREAK CORNERS IN OUT REMOVE ALL BURRS		C DCN E990209		Conley 5-13-99
		MATERIAL:		HEAT TREAT:		B DCN E990205		Conley 5-6-99
DWG. NO.		DESCRIPTION		FINISH:		A DCN E990133		Conley 3-17-99
REFERENCE DRAWINGS		USED ON:		NEXT ASS'Y: D990230		REV		DESCRIPTION
						APPR'D		CHECK
						DRWN		DATE
						SCALE		NTS
						SHEET		1 OF 1

CAVITY BEAM DUMP
HOUSING ASSEMBLY

CAD FILE: D990141-C.dwg
 SIZE: B
 DWG. NO.: D990141-C
 SHEET: 1 OF 1