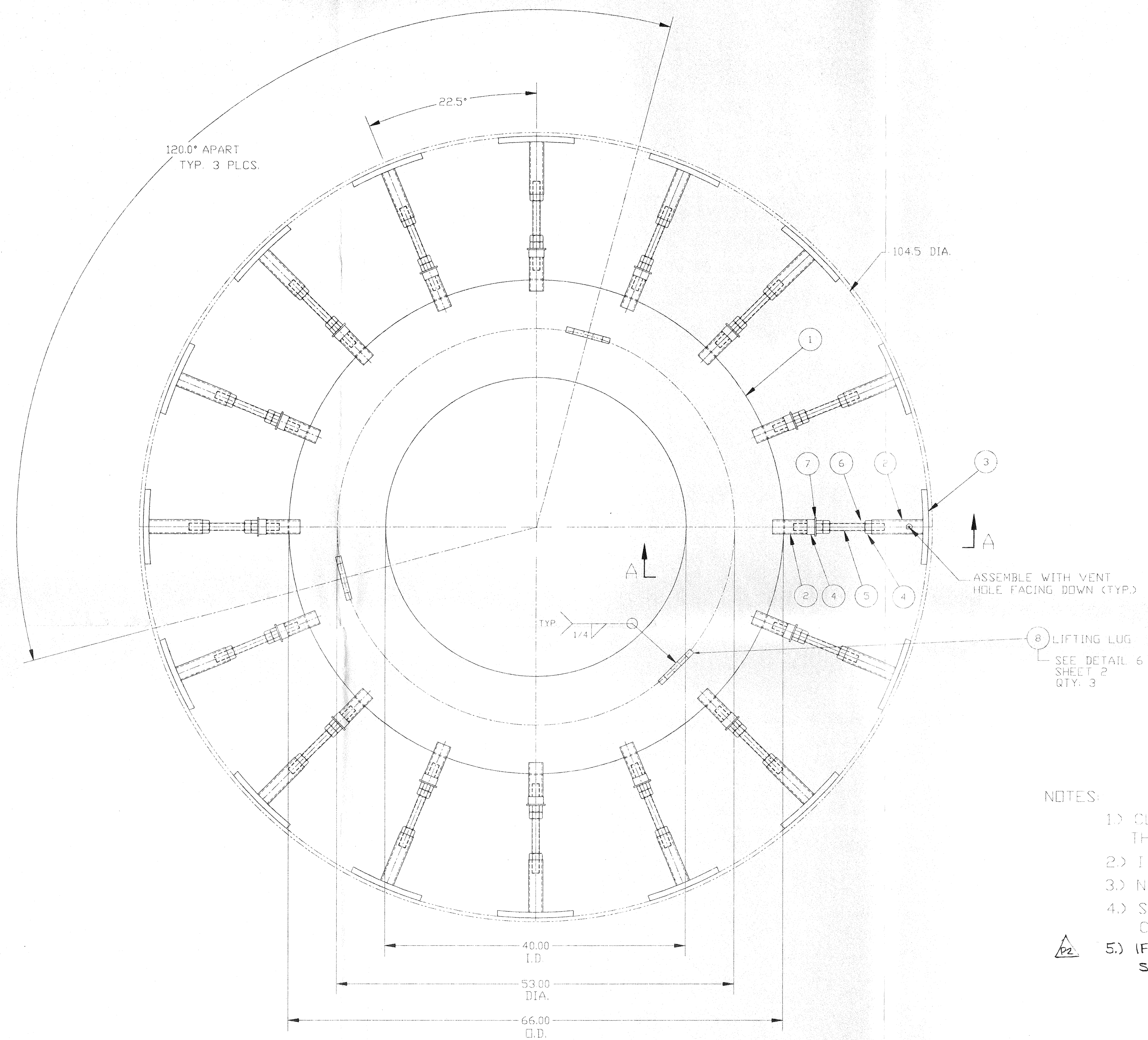


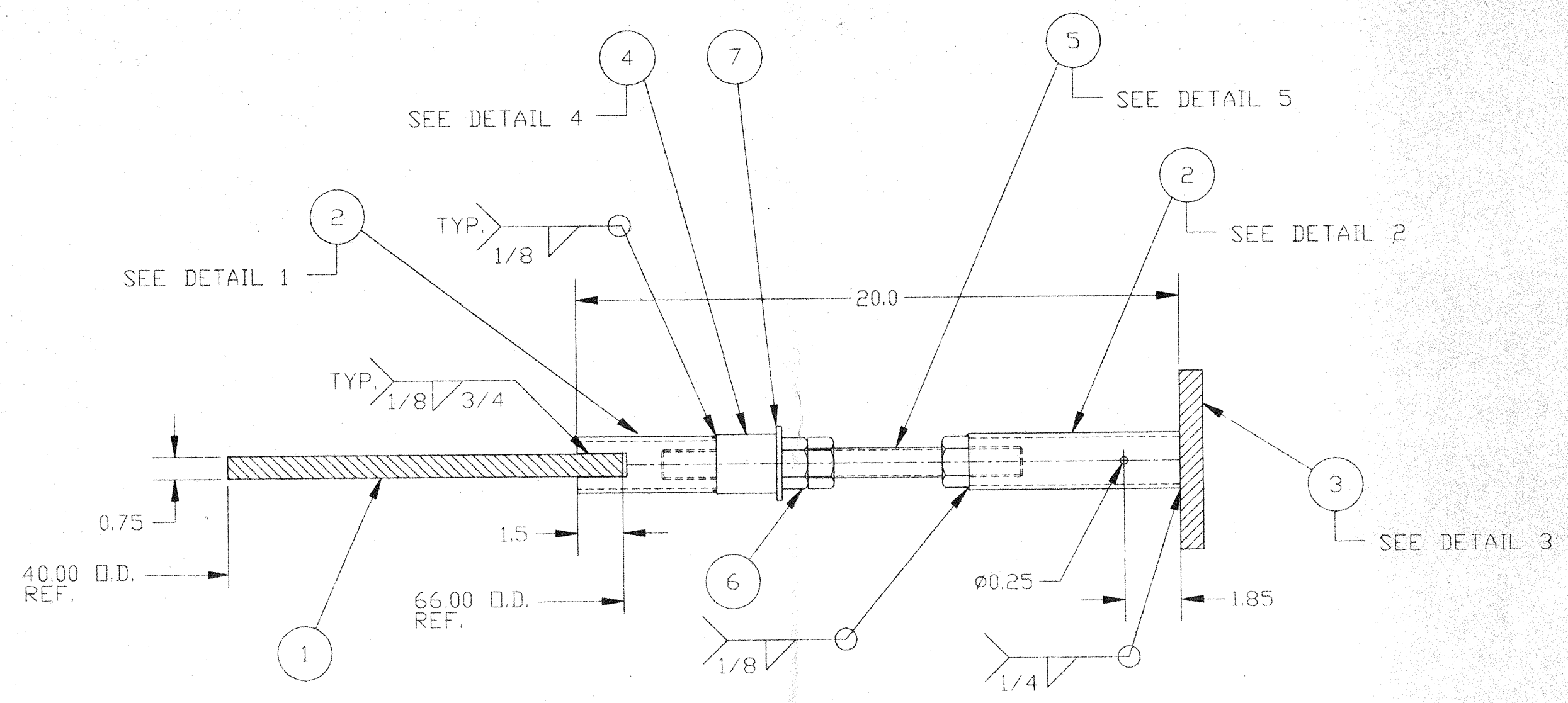
ITEM	PART NUMBER	SUFFIX	QTY	UM	DESCRIPTION
1	V049P8114		1	EA	RING, 3/4" X 66" O.D. X 40" I.D. 304 A479 BUGHT TO SIZE
2	C011002-1D		20	FT	PIPE, SCH 40 304 A312
3	C387912-06		20	FT	BAR, FLAT 3/4" X 6" 304 A479 ROLL TO 104.5 O.D.
4	C467932		3	FT	BAR, ROUND 2" O.D. 304 A479
5	V049M076		16	FT	ROD, THREADED 1"-8 UNC A193 GRB8 NICKLE PLATED
6	C106308		48	EA	NUT, HEAVY HEX 1"-8 UNC A193 GRB8
7	C429608		16	EA	WASHER, FLAT 1" SST
8			3	EA	MADE FROM DROP OF ITEM 3



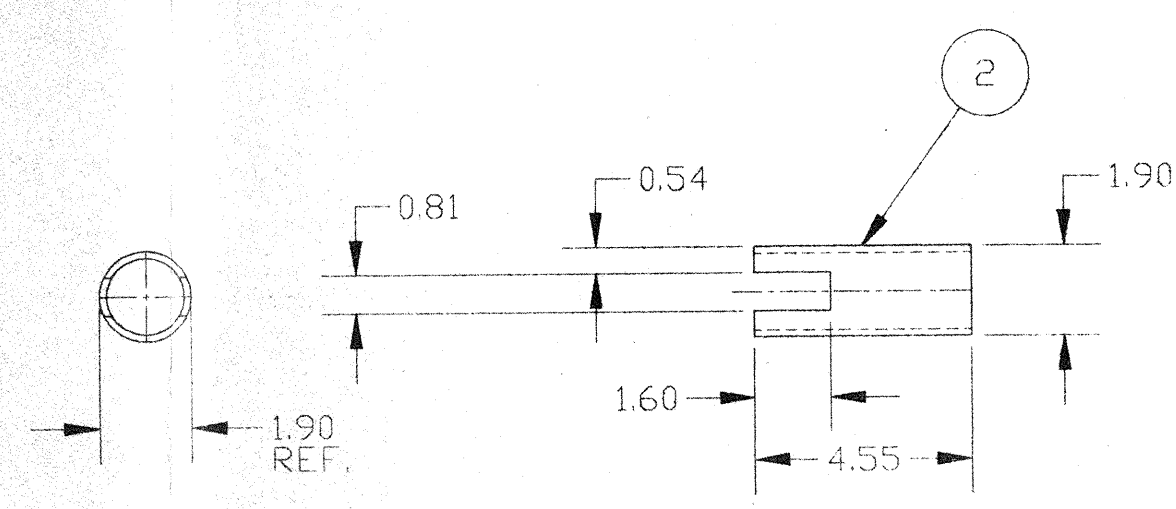
- NOTES:
- 1.) CLEANING: ASSEMBLY TO BE SCRUBBED WITH NYLON BRUSH AND DETERGENT, THEN RINSED WITH STEAM AND DRIED.
 - 2.) ITEM 2 TO BE CLEANED AND INSPECTED BEFORE EACH INSTALLATION IN A SHELL.
 - 3.) NO LUBRICANTS ARE ALLOWED ON ANY PARTS, KEEP CLEAN OF ALL HYDROCARBONS.
 - 4.) SPECIAL CARE IS REQUIRED TO PREVENT CONTAMINATION OF FIXTURE BY COVERING WITH TARPS AND STORING INSIDE WHEN NOT IN USE.
 - 5.) IF REQUIRED, CHAMBER FABRICATOR TO PROVIDE SUITABLE TEMPORARY INTERNAL SUPPORTS AND SPACERS BETWEEN FIXTURES.

2-REQ'D APR 30 1996

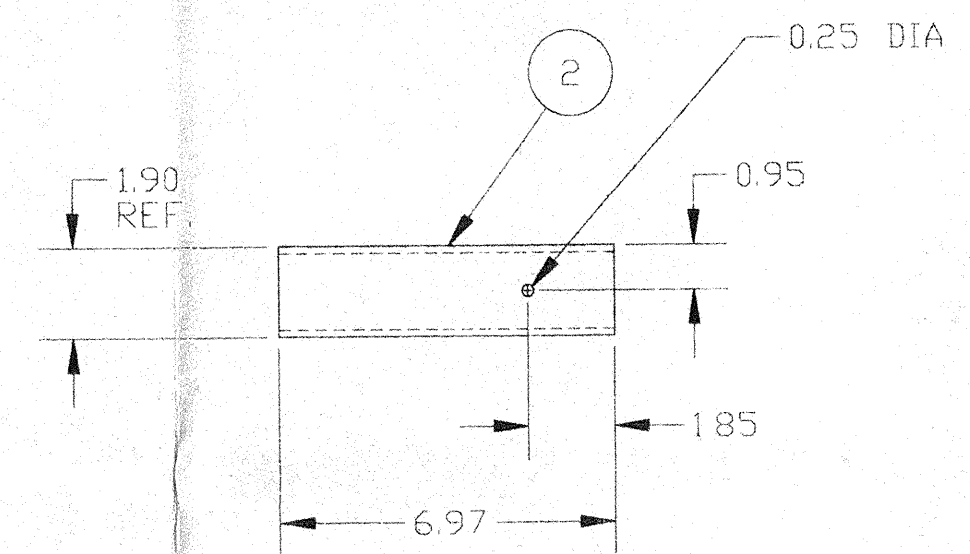
PROPRIETARY AND CONFIDENTIAL THIS DOCUMENT CONTAINS PROPRIETARY INFORMATION BELONGING TO PROCESS SYSTEMS INTERNATIONAL, INC OR ITS AFFILIATED COMPANIES AND SHALL BE USED ONLY FOR THE PURPOSE FOR WHICH IT WAS SUPPLIED. IT SHALL NOT BE COPIED, REPRODUCED OR OTHERWISE USED, NOR SHALL SUCH INFORMATION BE FURNISHED IN WHOLE OR IN PART TO OTHERS EXCEPT IN ACCORDANCE WITH THE TERMS OF ANY AGREEMENT UNDER WHICH IT WAS SUPPLIED OR WITH THE PRIOR WRITTEN CONSENT OF PROCESS SYSTEMS INTERNATIONAL, INC AND SHALL BE RETURNED UPON REQUEST.		UNLESS OTHERWISE SPECIFIED DIMENSIONS ARE IN INCHES TOLERANCES: FRACTIONAL ± .005 ANGULAR/RADIUS ± .01 30° BEND ± .02 TWO PLACE DECIMAL ± .01 THREE PLACE DECIMAL ± .005 FINISHED SURFACE ONE BREAK CORNERS IN OUT- REMOVE ALL BURRS		P2 RELEASED FOR FABRICATION P1 RELEASED FOR PROTOTYPE FABRICATION		P2F REC. MA 03/26/96 0097 PV 03/1/96		D990296-P2-V PROCESS SYSTEMS INTERNATIONAL, INC. 20 WALKUP DR. WESTBOROUGH, MASSACHUSETTS 01581 USA BSC FIXTURE, 104.5 I.D. INTERNAL LIGO VACUUM EQUIPMENT			
DWG. NO.	DESCRIPTION	V049-4-001	BEAM SPLITTER CHAMBER ASSY.	USED ON:	REV	DESCRIPTION	ISSUE DESCRIPTION	CAD FILE	SIZE	DWG. NO.	REV.
	REFERENCE DRAWINGS			NEXT ASS'Y:				4049S1	D	V049-4-048	P2
								SCALE	AS NOTED	SHEET	1 OF 2



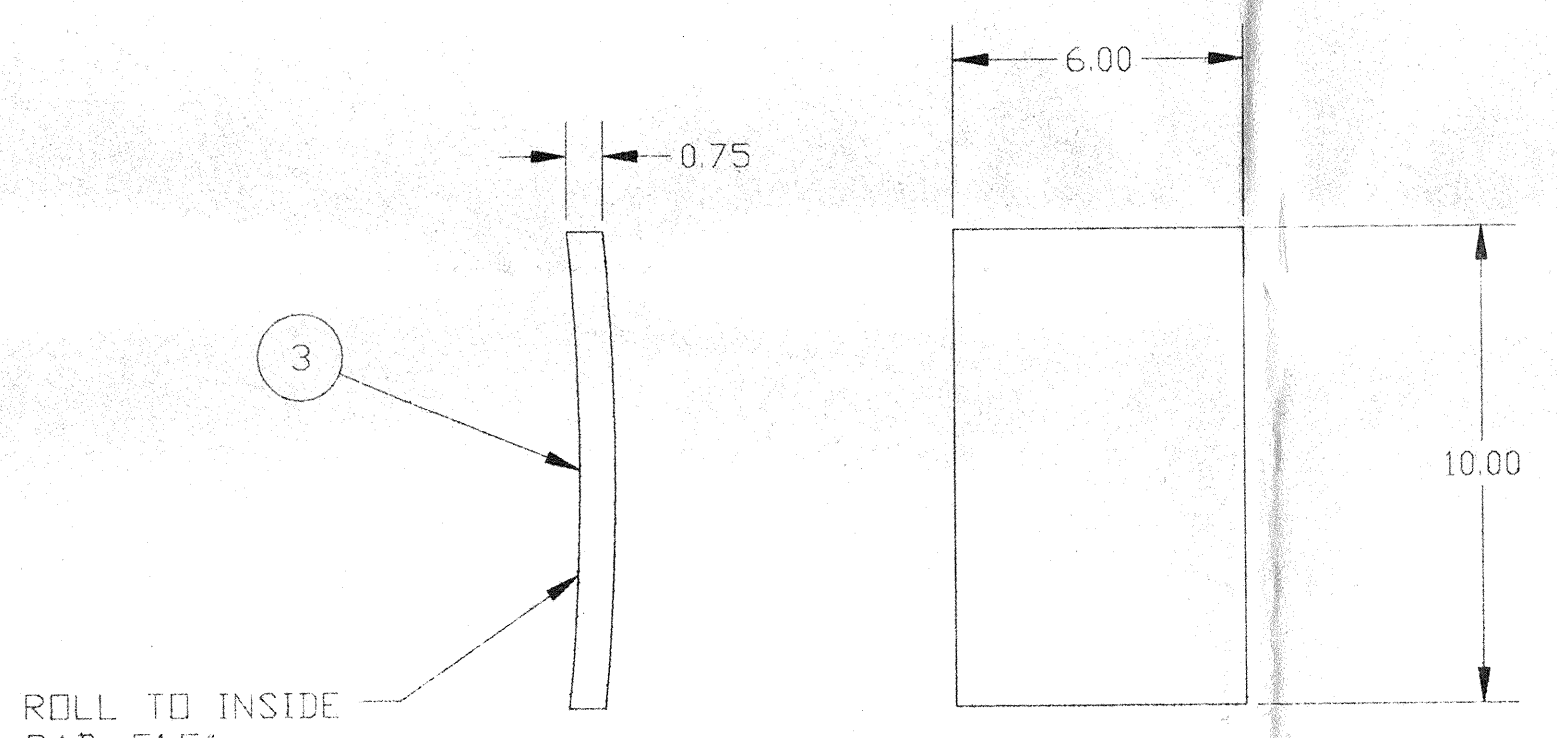
SECTION "A"- "A"
SCALE: 3"=1'-0"
16 PLCS



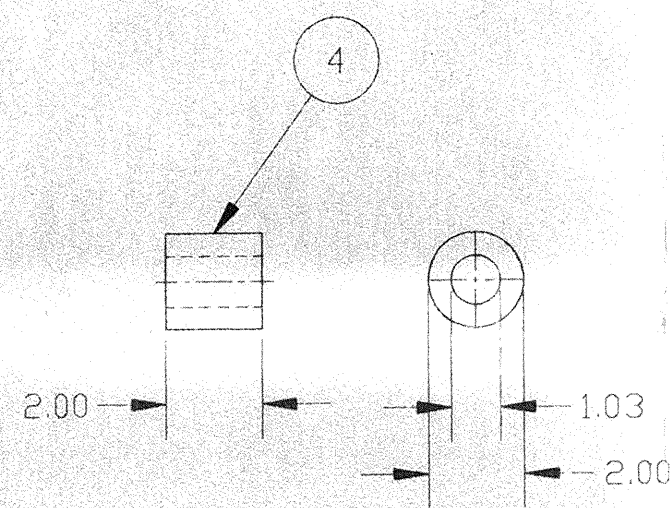
DETAIL 1
SCALE: 3"=1'-0"
QTY: 16



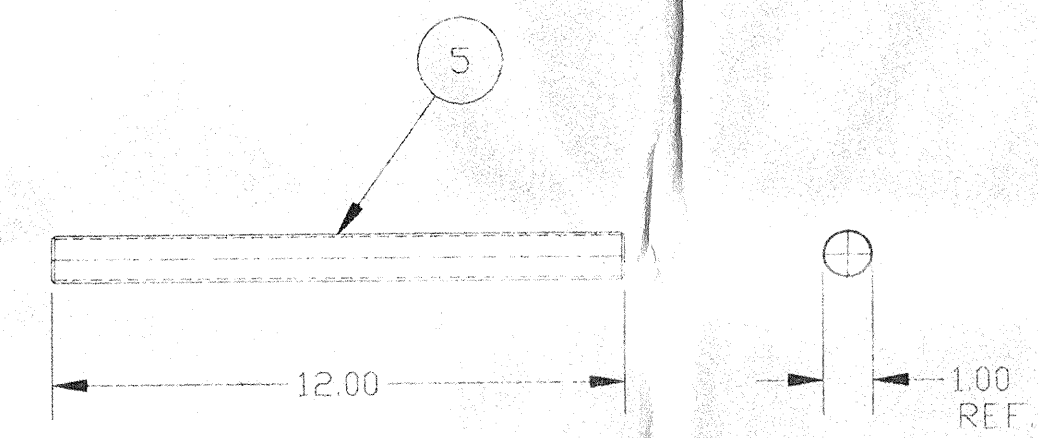
DETAIL 2
SCALE: 3"=1'-0"
QTY: 16



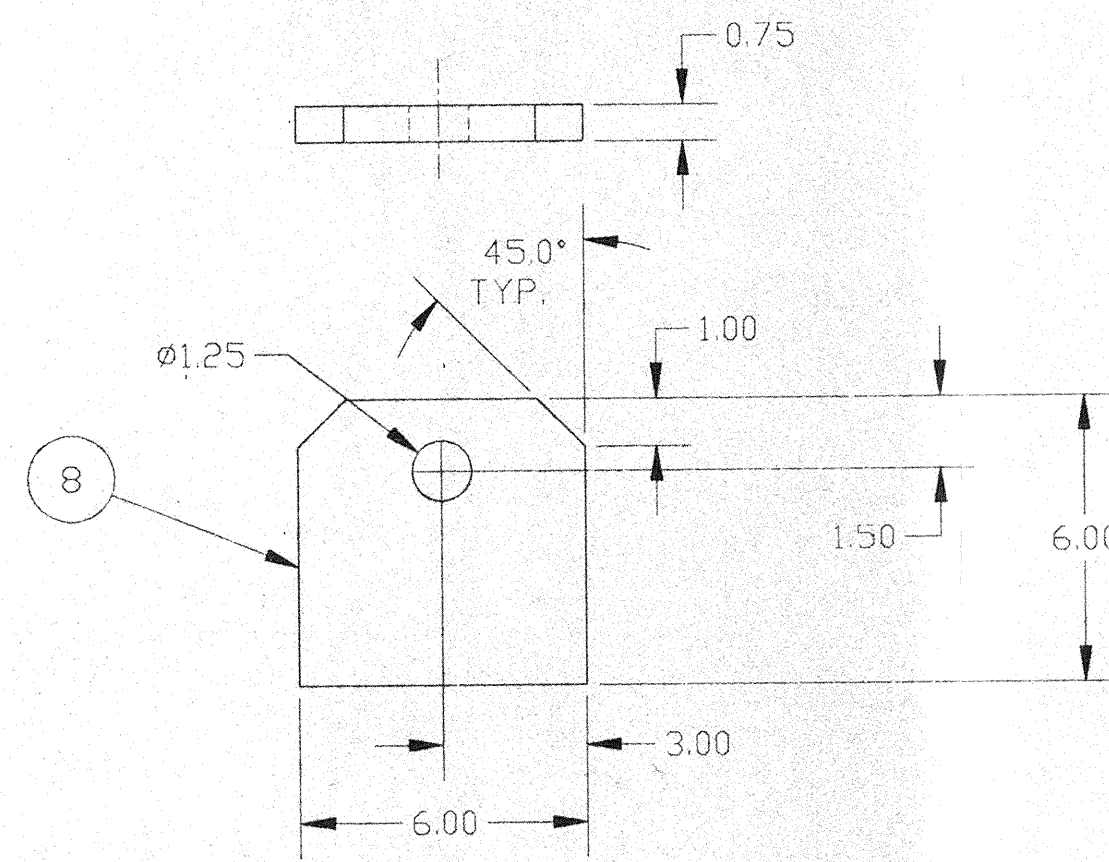
DETAIL 3
SCALE: 3"=1'-0"
QTY: 16



DETAIL 4
SCALE: 3"=1'-0"
QTY: 16



DETAIL 5
SCALE: 3"=1'-0"
QTY: 16



DETAIL 6
SCALE: 3"=1'-0"
QTY: 3

APR 30 1996

0990296-P2-V SEE SHEET 1 FOR REVISIONS

PROCESS SYSTEMS INTERNATIONAL INC.
20 WALKUP DR. WESTBOROUGH, MASSACHUSETTS 01581 USA

BSC FIXTURE
104.5 I.D. INTERNAL
LIGD VACUUM EQUIPMENT

CAD FILE 4048S2	SIZE D	DWG. NO. V049-4-048	REV. P2
SCALE AS NOTED	SHEET 2 OF 2		

Mar 19, 1996 - 09:31:36