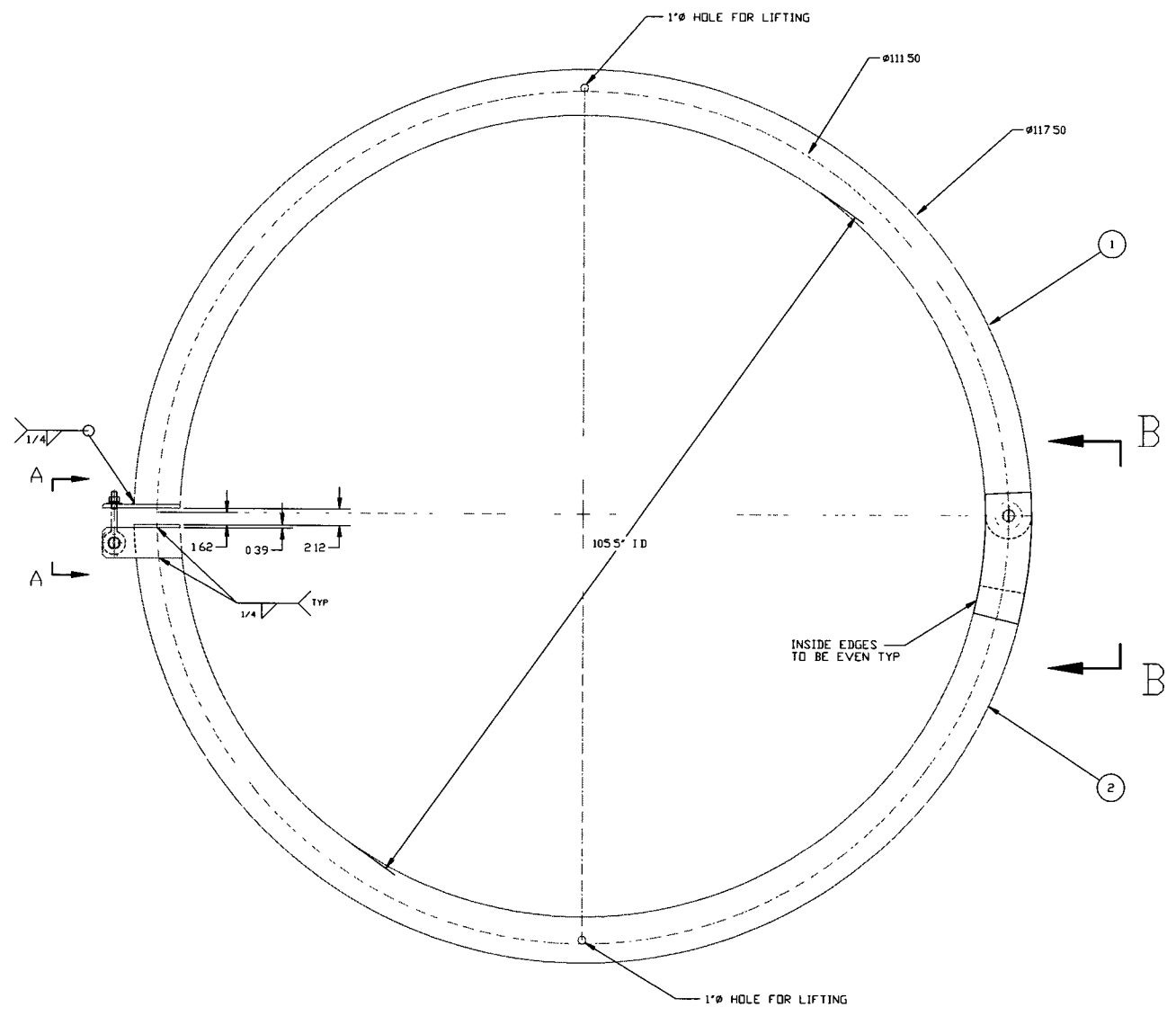
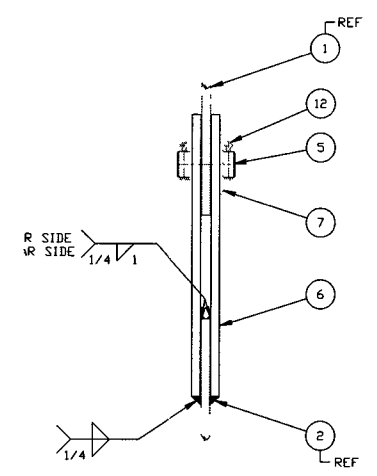


ITEM	PART NUMBER	SUFFIX	QTY	UM	DESCRIPTION
1	V049M074		2	EA	FLAT BAR 1/2x6x20FT 304 A479 ROLLED HW TO 105.5 ID
2			1	EA	FLAT BAR 1/2x6x20FT 304 A479 ROLLED HW TO 105.5 ID
3					MADE FROM DROP OF ITEM (1)
4			1	EA	EYE BOLT MCMASTER CARR 3016763
5	C467924		1	FT	ROUND BAR 1 1/2" x 3" LG 304 A479
6					MADE FROM DROP OF ITEM (1)
7			4	EA	WASHER MCMASTER CARR 90108A041
8					MADE FROM DROP OF ITEM (2)
9	C429806		1	EA	FLAT WASHER 3/4 A436 C.S.
10	C439806		1	EA	LOCK WASHER 3/4 A436
11	C109706		1	EA	HEX NUT 3/4 A563
12			2	EA	COTTER PIN 1/4 X 3" C.S.

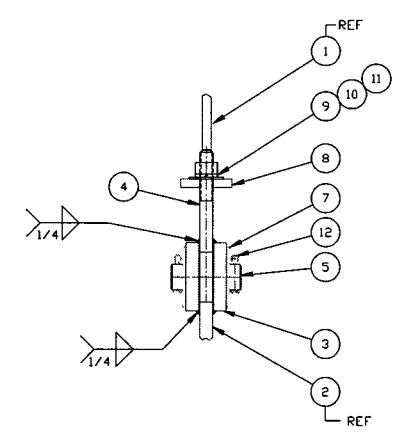


PLAN VIEW
SCALE 1 1/2"=1'-0"



VIEW "B-B"
SCALE 3"=1'-0"

ELECTRONIC COPY

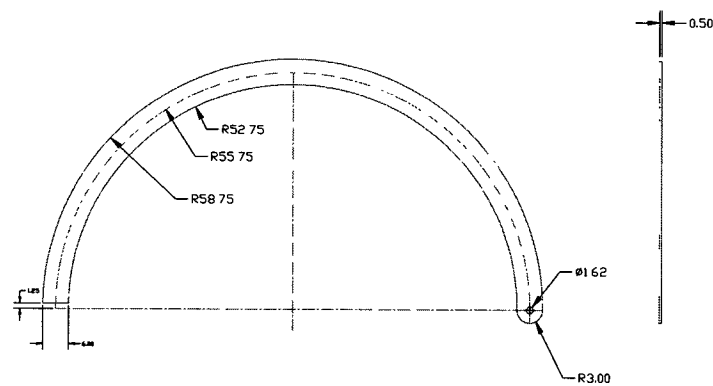


VIEW "A-A"
SCALE 3"=1'-0"

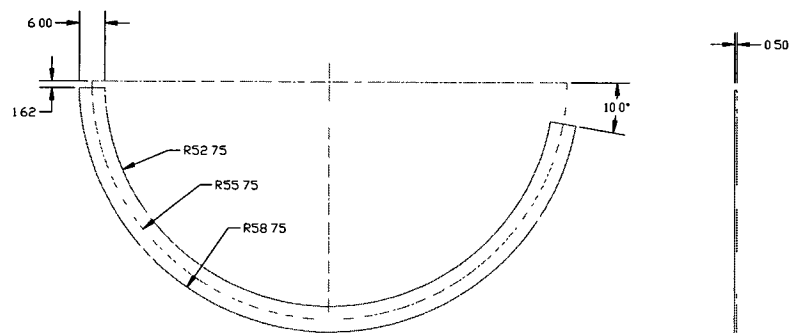
2-REQ'D
LIGO-D990299-P2

PROPRIETARY AND CONFIDENTIAL THIS DOCUMENT CONTAINS PROPRIETARY INFORMATION BELONGING TO PROCESS SYSTEMS INTERNATIONAL, INC. OR ITS AFFILIATED COMPANIES AND SHALL BE KEPT CONFIDENTIAL FOR THE PURPOSES FOR WHICH IT WAS SUPPLIED. IT SHALL NOT BE COPIED, REPRODUCED OR OTHERWISE TRANSMITTED IN ANY MANNER TO ANY OTHER PERSON WITHOUT THE WRITTEN CONSENT OF PROCESS SYSTEMS INTERNATIONAL, INC. AND SHALL BE RETURNED UPON REQUEST.		UNLESS OTHERWISE SPECIFIED DIMENSIONS ARE IN INCHES TOLERANCES: FRACTIONS: ± .005 DECIMALS: ± .005 ANGLES: ± .005 HOLE POSITION: ± .005 THREE PLACE DECIMAL ± .005 FINISHED SURFACE: ± .005 BREAK CORNERS: R1 REMOVE ALL BARRIS		P2 RELEASED FOR FABRICATION P1 RELEASED FOR PROTOTYPE FABRICATION		MA 03/26/96 0097 PV 03/11/96		PROCESS SYSTEMS INTERNATIONAL, INC. 20 WALKUP DR. WESTBOROUGH MASSACHUSETTS 01581 USA		EXTERNAL FIXTURE 105.5 I.D. LIGO VACUUM EQUIPMENT		CAD FILE 4051S1 SIZE 11 DWG NO V049-4-051 SHEET 1 OF 2	
DWG NO	DESCRIPTION	DWG NO	DESCRIPTION	USED ON	REV	CHKD	DRWN	DATE	DESN	SCALE	AS NOTED	SHEET	1 OF 2
		V049-4-001	BEAM SPLITTER CHAMBER ASSY	NEXT ASSY									

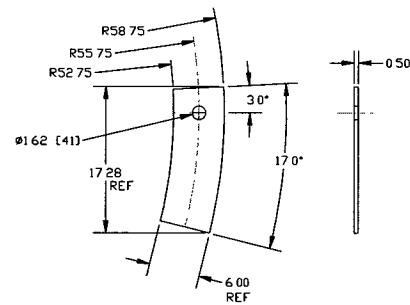
FOR COMMERCIAL USE



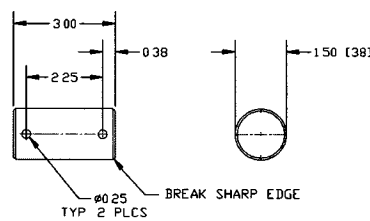
DETAIL OF ITEM 1
SCALE: 3/4"=1'-0"



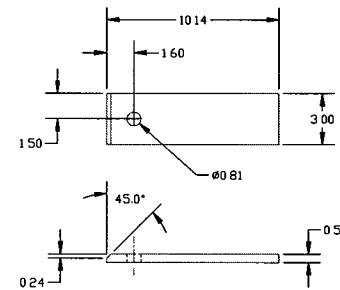
DETAIL OF ITEM 2
SCALE: 3/4"=1'-0"



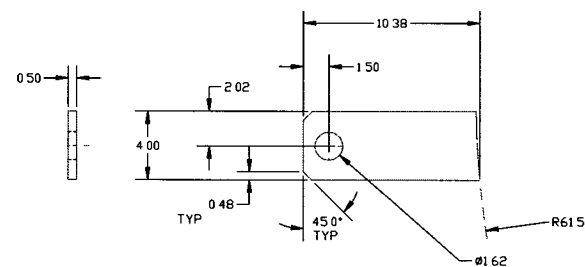
DETAIL OF ITEM 6
SCALE: 1 1/2"=1'-0"
2-REQ'D



DETAIL OF ITEM 5
SCALE: HALF



DETAIL OF ITEM 8
SCALE: 3"=1'-0"



DETAIL OF ITEM 3
SCALE: 3"=1'-0"
2-REQ'D

**ELECTRONIC
COPY**

SEE SHEET 1 FOR REVISIONS

PROCESS SYSTEMS INTERNATIONAL INC. <small>20 WALKUP DR. WESTBOROUGH, MASSACHUSETTS 01581 USA</small>			
EXTERNAL FIXTURE 105.5 I.D.			
LIGD VACUUM EQUIPMENT			
CAD FILE 405152	SIZE D	FIG. NO. V049-4-051	REV. P2
SCALE AS NOTED	SHEET 2 OF 2		