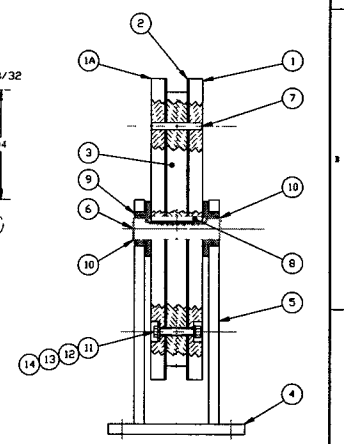


ITEM	PART NUMBER	SUFFIX	QTY	LM	DESCRIPTION	MAT'L
1	XX		1	EA	PLATE 1" X 22 1/4" X 22 1/4"	ALUM
1A	XX		1	EA	PLATE 1" X 22 1/4" X 22 1/4"	ALUM
2	XX		2	EA	SHEET 1/8" X 22" X 22"	TEFLON
3	XX		1	EA	PLATE 2" X 18 1/4" X 18 1/4"	304 SST
4	XX		1	EA	PLATE 3/4" X 9" X 16 1/2"	304 SST
5	XX		2	EA	PLATE 3/4" X 8" X 16 1/4"	304 SST
6	XX		1	EA	ROUND, 1 1/2" DIA X 7" LG	304 SST
7	XX		2	EA	PH. LOCATING, 1/2" DIA X 4" LG	304 SST
8	XX		1	EA	KEY, 3/8" SQ X 4" LG	304 SST
9	XX		2	EA	ROD, 4" DIA X 1 1/4" LG NUT/STW/CARR #870X59	UNVV
10	XX		2	EA	RING RETAINING, OMS/CARR #150X120	SST
11	XX		6	EA	BOLT HEX HD, 1/2"-13UNC-2A X 3 1/2 LG	SST
12	XX		6	EA	WASHER FLAT 1/2"	SST
13	XX		6	EA	WASHER LOCK 1/2"	SST
14	XX		6	EA	NUT HEX 1/2"-13UNC	SST

Oct 23, 1996 - 11:33:02

ELECTRONIC COPY



<p>DISCREETARY AND CONFIDENTIAL</p> <p>THIS DOCUMENT CONTAINS PROPRIETARY INFORMATION BELONGING TO PROCESS SYSTEMS INTERNATIONAL, INC. OR ITS AFFILIATED COMPANIES AND SHALL BE USED ONLY FOR THE PURPOSES FOR WHICH IT WAS ISSUED. IT SHALL NOT BE COPIED, REPRODUCED OR DISSEMINATED IN ANY MANNER WITHOUT THE WRITTEN CONSENT OF PROCESS SYSTEMS INTERNATIONAL, INC. AND SHALL BE RETURNED UPON REQUEST.</p>		<p>UNLESS OTHERWISE SPECIFIED</p> <p>DIMENSIONS ARE IN INCHES</p> <p>TOLERANCES UNLESS OTHERWISE SPECIFIED:</p> <p>FRACTIONS ±.005</p> <p>DECIMALS ±.005</p> <p>ANGLES ±.005</p> <p>FINISHES UNLESS OTHERWISE SPECIFIED:</p> <p>ALL SURFACES SHALL BE FINISHED TO A 320 RA</p> <p>REMOVE ALL BURRS</p>		<p>NO SCALE THIS DRAWING</p> <p>0 RELEASE FOR FABRICATION</p> <p>DA 31/20/96</p> <p>USED ON: REV DESCRIPTION</p> <p>CHKD: DRVN: DATE: DECN</p>		<p>PROCESS SYSTEMS INTERNATIONAL, INC.</p> <p>30 WALSH DR. WESTBOROUGH, MASSACHUSETTS 01581 USA</p> <p>SUPPORT WHEEL ASSY HAM WASH CART LIGO VACUUM EQUIPMENT</p> <p>FIG FILE: V0494151 REV: 0 SHEET: 1 OF 1</p>	
1	DESCRIPTION	2	DESCRIPTION	3	ISSUE DESCRIPTION	4	SCALE