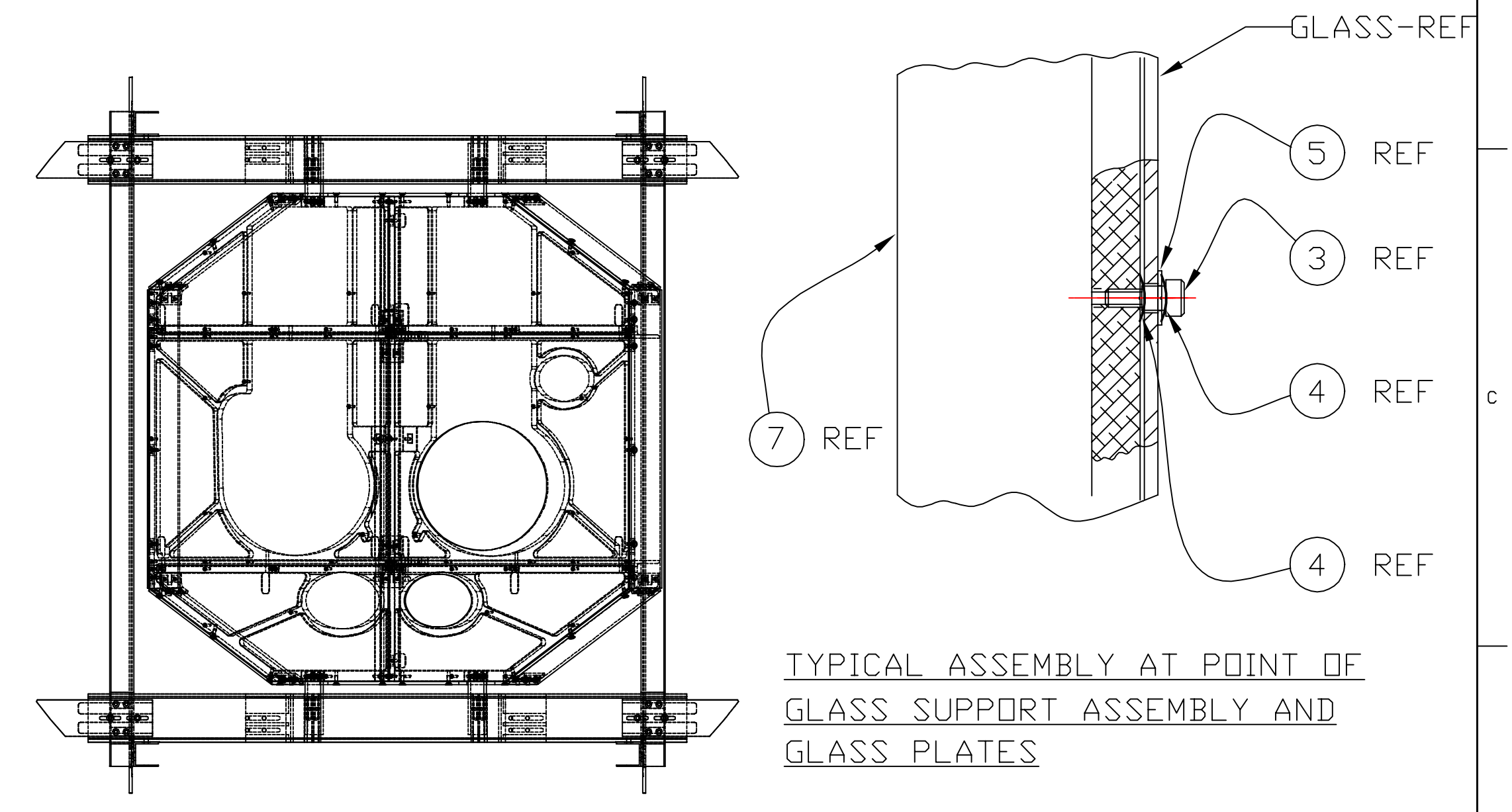
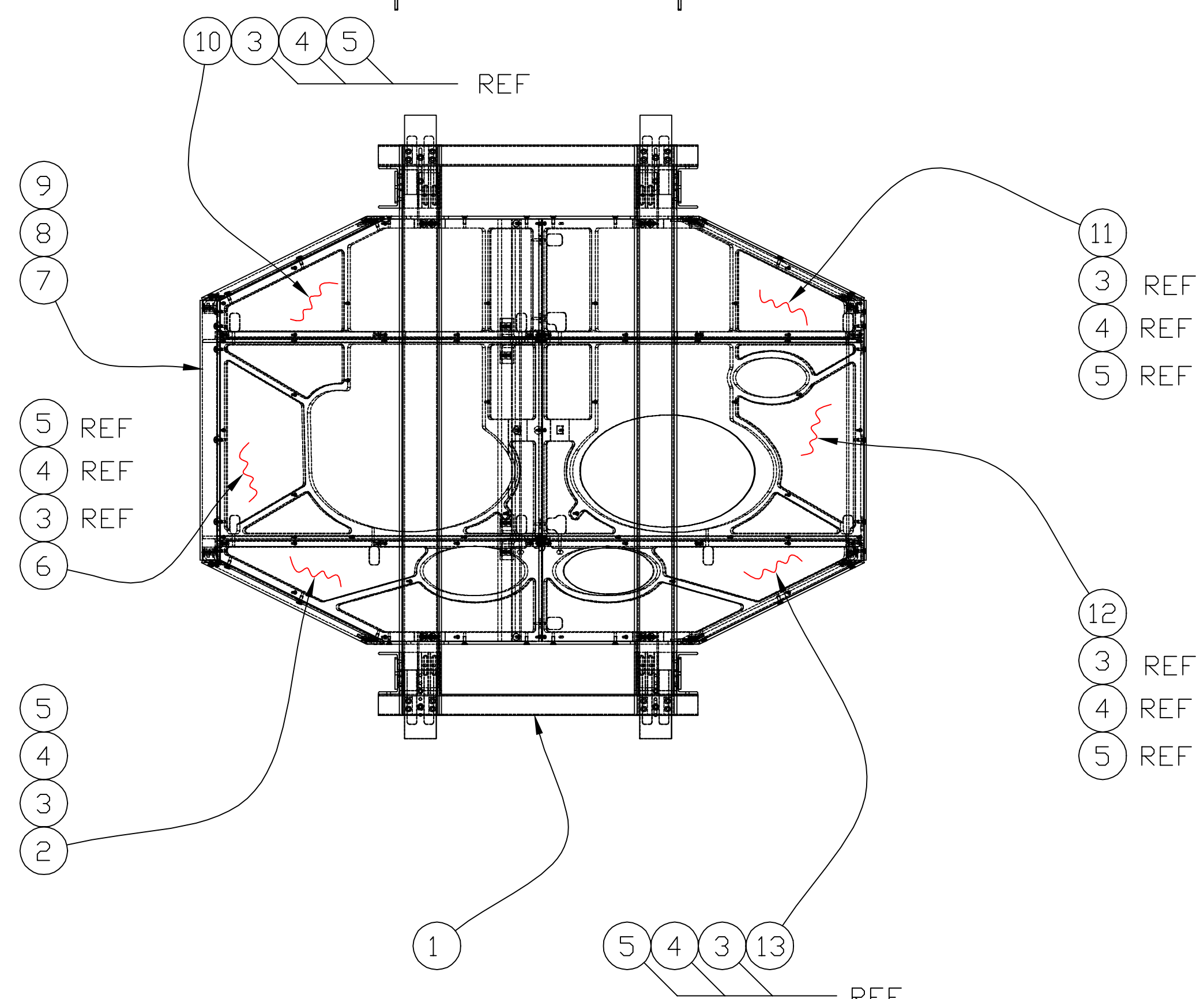
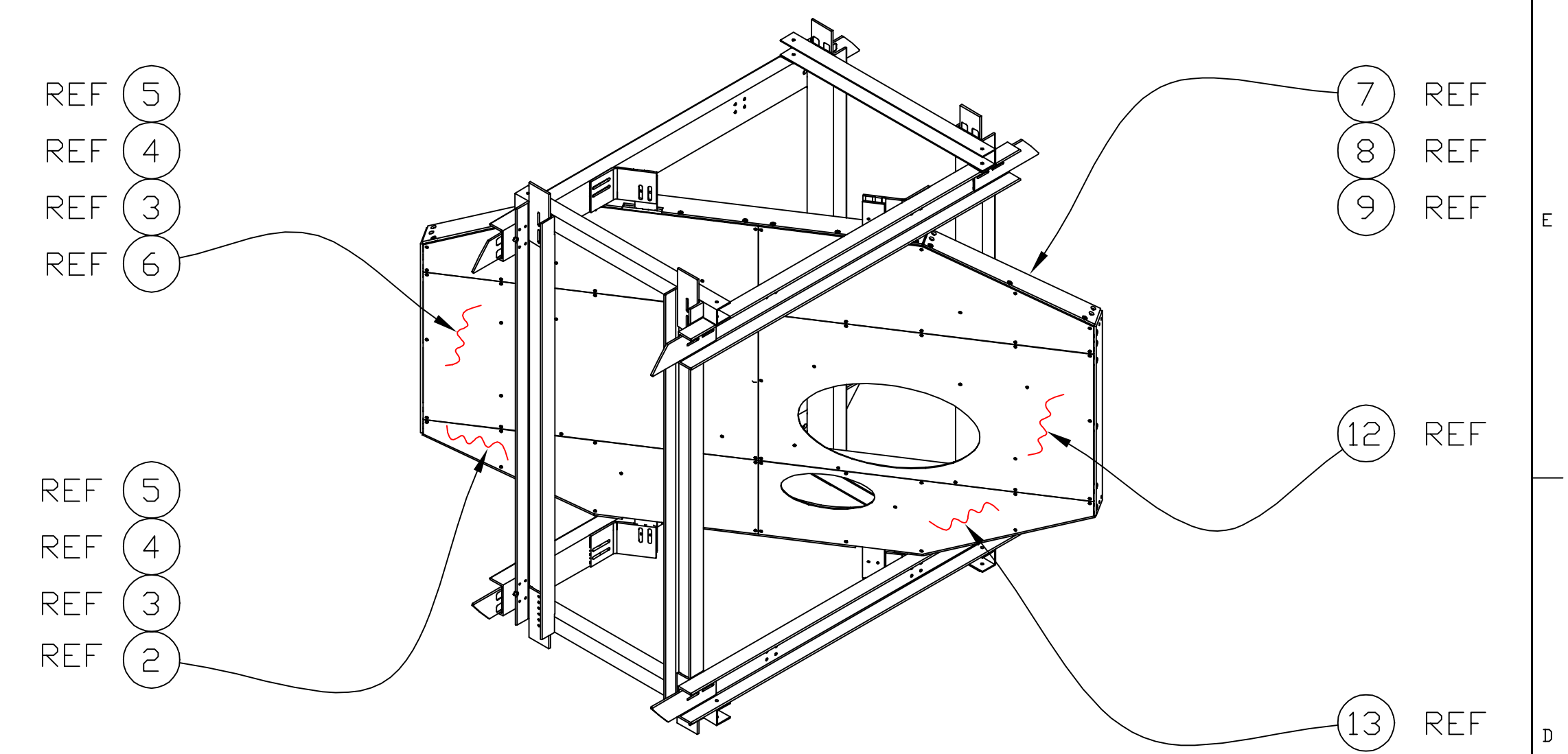


TYPICAL ASSEMBLY AT POINT OF GLASS SUPPORT ASSEMBLY AND OUTER FRAME ASSEMBLY



TYPICAL ASSEMBLY AT POINT OF GLASS SUPPORT ASSEMBLY AND GLASS PLATES

REF	QTY	PART OR DRWG NO.	DESCRIPTION	MATERIAL
13	1	D990492-A	GLASS PLATE #6E	-
12	1	D990388-A	GLASS PLATE #4E	-
11	1	D990494-A	GLASS PLATE #2	-
10	1	D990497-A	GLASS PLATE #1	-
9	8	McMaster-Carr #92141A030	FLAT WASH 5/16 NOM id	STAINLESS STEEL
8	8	McMaster-Carr #92196A580	SHCS 5/16-18 x 5/8 LG	STAINLESS STEEL
7	1	D990341-A	GLASS SUPPRT ASSEMBLY, ITM-X	-
6	1	D990502-A	GLASS PLATE #3L	-
5	76	BOKERS INC. #999	FLAT WASH .263 id x .560 od x .040 thk	STAINLESS STEEL
4	152	McMaster-Carr #9716K77	CURV'D SPRING .26id x .49od x .063 thk	STAINLESS STEEL
3	76	McMaster-Carr #94035A534	SHLD SCR 1/4 DIA x 1/4 LG/#10-32 THD	STAINLESS STEEL
2	1	D990497-A	GLASS PLATE #5	-
1	1	D990380-A	OUTER SUPPRT ASSEMBLY, ITM-X	-
REF	QTY	PART OR DRWG NO.	DESCRIPTION	MATERIAL

UNLESS OTHERWISE SPECIFIED DIMENSIONS ARE IN INCHES		TOLERANCES: FRACTIONAL ± ANGULAR ± TWO PLACE DECIMAL ± THREE PLACE DECIMAL ±		INSIDE RADII FINISHED SURFACE RMS BREAK OUTSIDE CORNERS REMOVE ALL BURRS		MATERIAL:		HEAT TREAT:		FINISH:		A RELEASE E000098 - - - KABOT 3-5-00		LIGO CALIFORNIA INSTITUTE OF TECHNOLOGY MASSACHUSETTS INSTITUTE OF TECHNOLOGY	
DWG. NO.		DESCRIPTION		MATERIAL:		HEAT TREAT:		FINISH:		A RELEASE E000098 - - - KABOT 3-5-00		CAD FILE 990342A.dwg		SIZE DWG. NO. D D990342-A	
REFERENCE DRAWINGS		USED ON:		NEXT ASS'Y: D980221		A RELEASE E000098 - - - KABOT 3-5-00		A RELEASE E000098 - - - KABOT 3-5-00		SCALE NTS		SHEET 1 OF 1		ARM CAVITY BAFFLE, LIVINGSTON SITE, ITM-X ASSEMBLY	