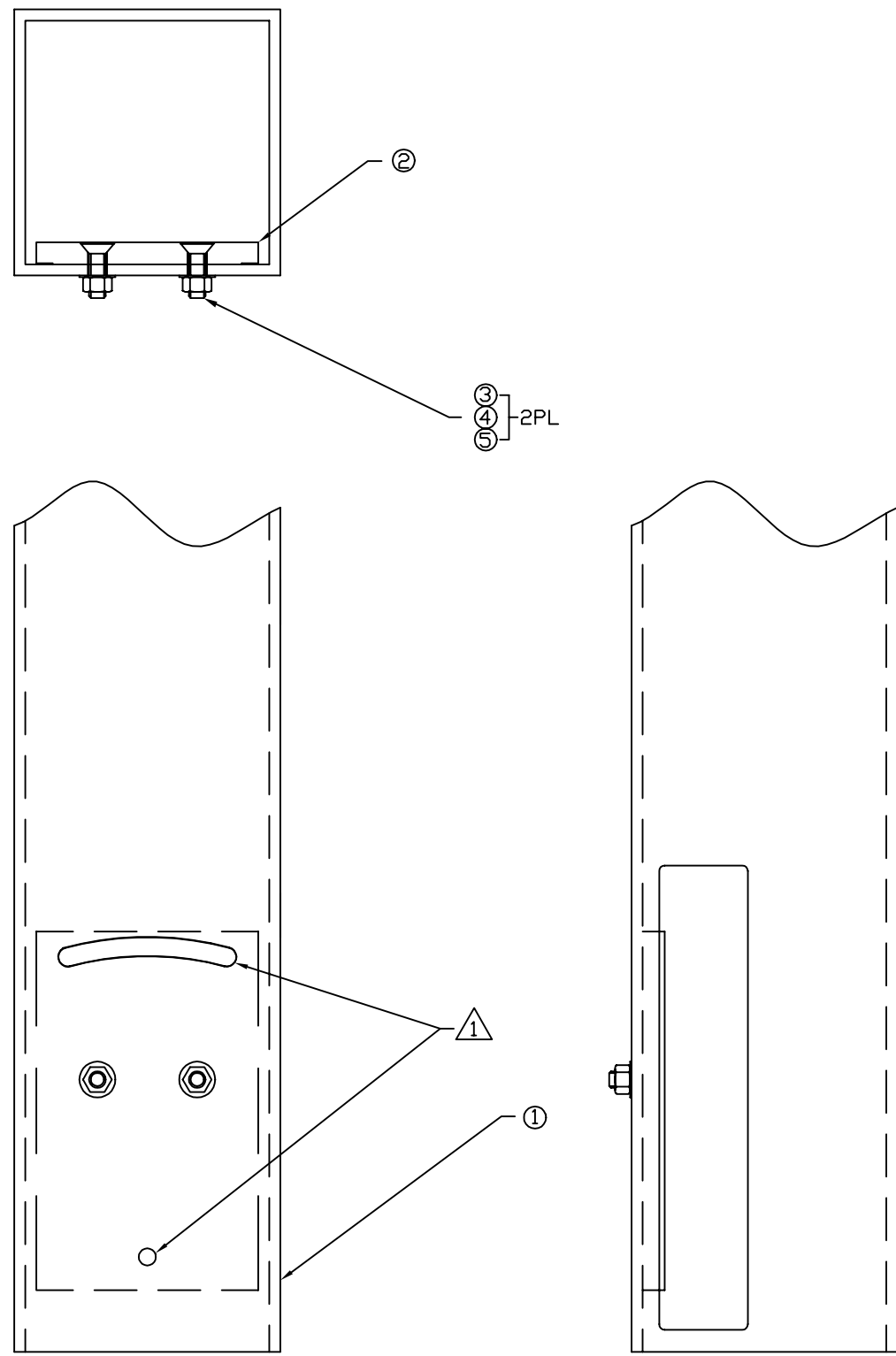


NOTES: (UNLESS OTHERWISE SPECIFIED)
 △ ALIGN NOTED MATING FEATURES IN ITEMS
 1 & 2 AS FOLLOWS:
 ALIGN HOLES USING A SIZE V (Ø.377) OR
 W (Ø.386) DRILL ROD OR EQUIVALENT. ROTATE
 SLOTS INTO ALIGNMENT BY EYE, THEN FASTEN
 HARDWARE.



REF.	QTY.	PART or DRWG No.	NOMENCLATURE or DESCRIPTION	MATERIAL
5	2	U-C Components WFV-38	.39 ID X .625 OD X .032 THICK FLAT WASHER	18-8 ST STEEL
4	2	McM-Carr 94804A320	3/8-16 HEX NUT	316 ST STEEL
3	2	McM-Carr 90585A626	3/8-16 X 1.25 SOCKETED FLAT HEAD SCREW	316 ST STEEL
2	1	D990140	HOUSING PLATE	-
1	1	D990222	HOUSING TUBE	-

PARTS and MATERIAL LIST

		UNLESS OTHERWISE SPECIFIED DIMENSIONS ARE IN INCHES							LIGO CALIFORNIA INSTITUTE OF TECHNOLOGY MASSACHUSETTS INSTITUTE OF TECHNOLOGY		
		TOLERANCES: FRACTIONAL ± ANGULAR ± ANGULAR MACH ± BEND ± TWO PLACE DECIMAL		THREE PLACE DECIMAL FINISHED SURFACE RMS BREAK CORNERS IN OUT REMOVE ALL BURRS						CAVITY BEAM DUMP HOUSING ASSEMBLY BSC8, 2KBSAR3	
		MATERIAL:	HEAT TREAT:	FINISH:	A	DCN E990256-00	Conley	6-17-99	CAD FILE	SIZE DWG. NO.	
DWG. NO.	DESCRIPTION				REV	DESCRIPTION	APPR'D	CHECK	DRWN	DATE	
	REFERENCE DRAWINGS	USED ON:	NEXT ASS'Y: D990230			ISSUE DESCRIPTION					
6		5	4		3		2		1		1 OF 1

SCALE: NTS
 SHEET: 1 OF 1