

6.752 KHz Notch Filter

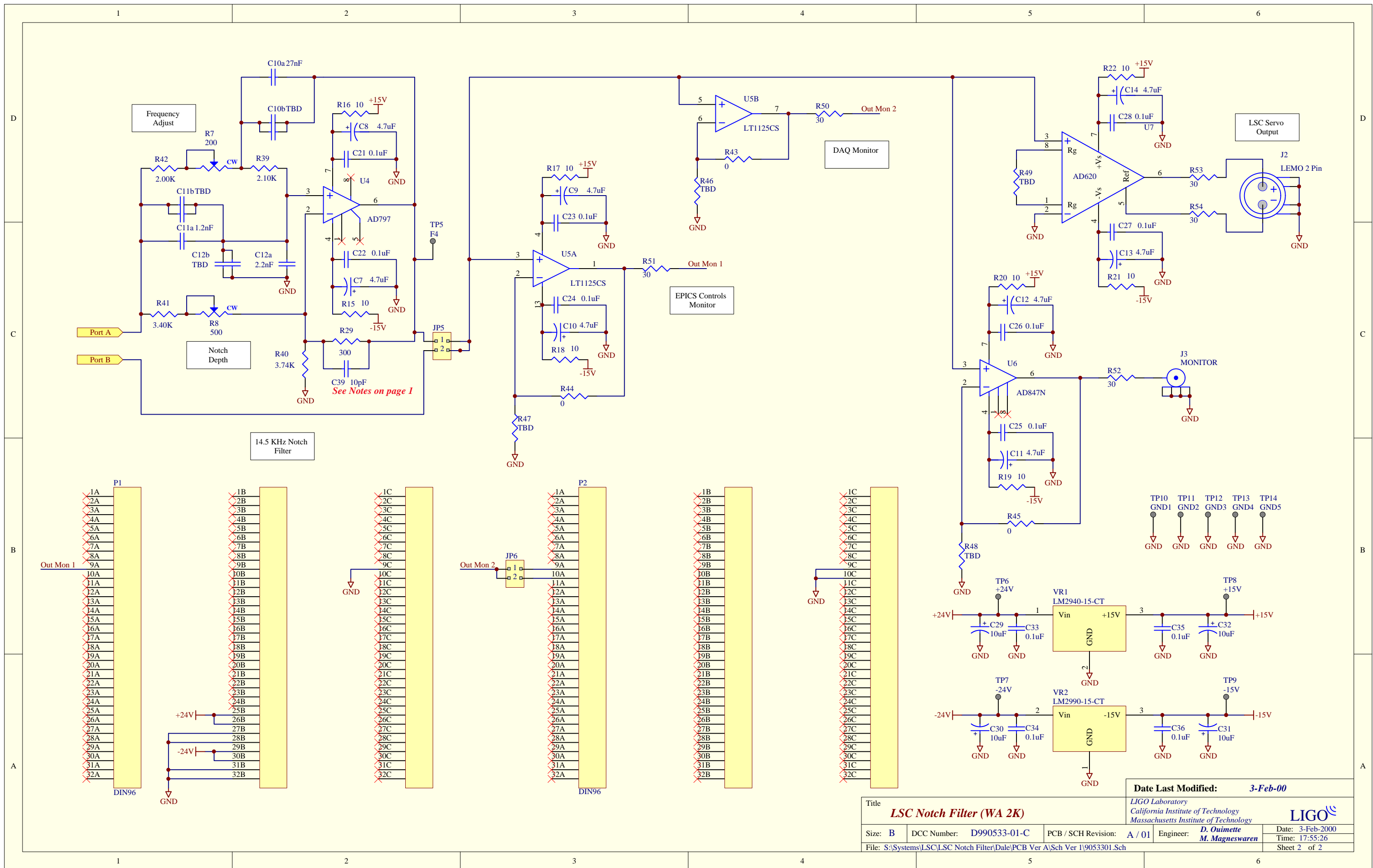
6.752 KHz Notch Filter

9.8 KHz Notch Filter

NOTES:
 This is a 6U single width EUROCARD.
 No controls are required to operate this card. EPICS and DAQ readback are provided.
 C37, C38, C39, C40 are installed directly on top of R26, R27, R28, R29 respectively.

Date Last Modified: 3-Feb-00

Title LSC Notch Filter (WA 2K)		LIGO Laboratory California Institute of Technology Massachusetts Institute of Technology		LIGO	
Size: B	DCC Number: D990533-01-C	PCB / SCH Revision: A / 01	Engineer: D. Ouimette M. Magneswaren	Date: 3-Feb-2000	Time: 17:55:18
File: S:\Systems\LSC\LSC Notch Filter\Date\PCB Ver A\Sch Ver 1\9053300.prj			Sheet 1 of 2		



Title LSC Notch Filter (WA 2K)			
Size: B	DCC Number: D990533-01-C	PCB / SCH Revision: A / 01	Engineer: D. Ouimette M. Magneswaren
File: S:\Systems\LSC\LSC Notch Filter\Date\PCB Ver A\Sch Ver 1\9053301.Sch			

Date Last Modified: 3-Feb-00
LIGO Laboratory California Institute of Technology Massachusetts Institute of Technology
LIGO
Date: 3-Feb-2000 Time: 17:55:26 Sheet 2 of 2