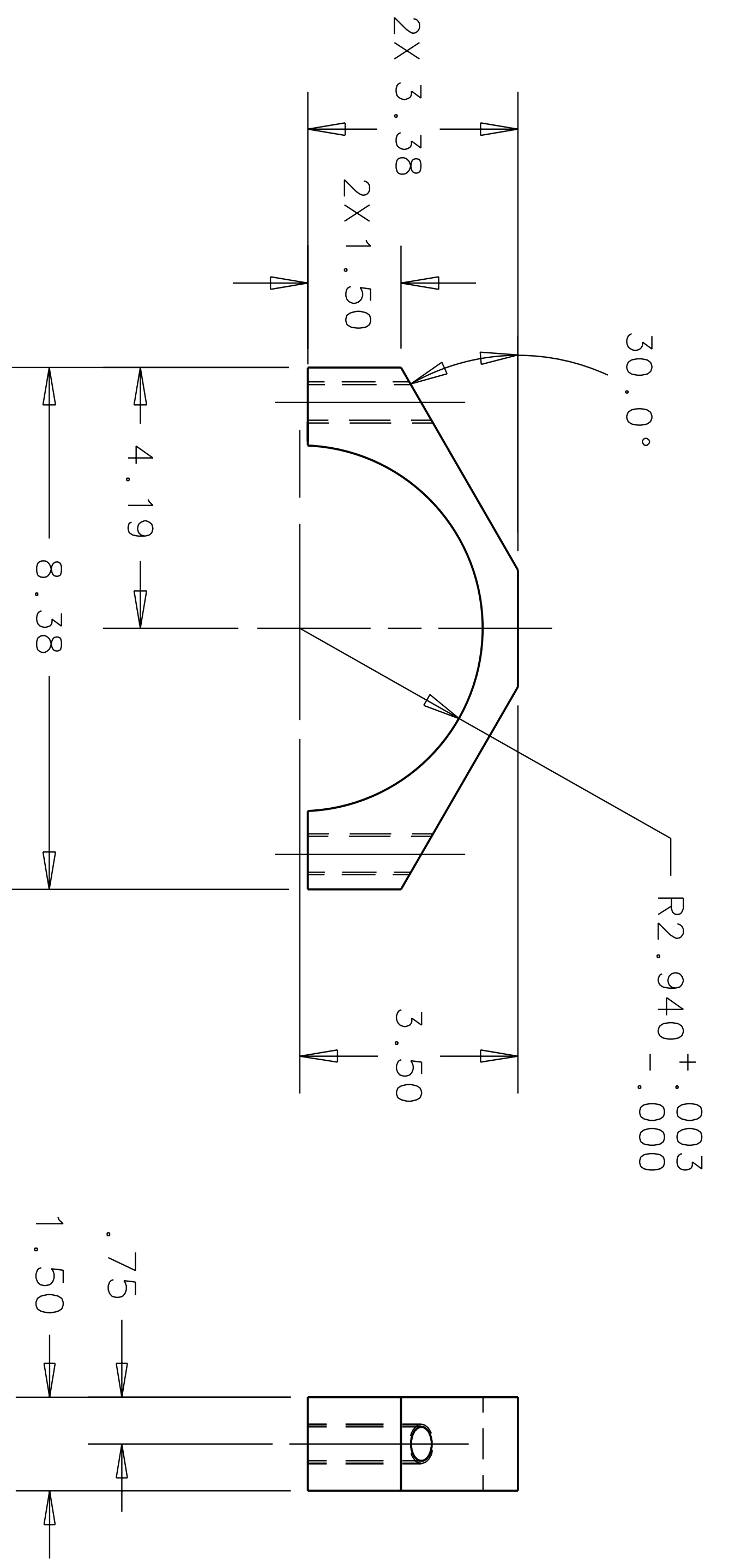
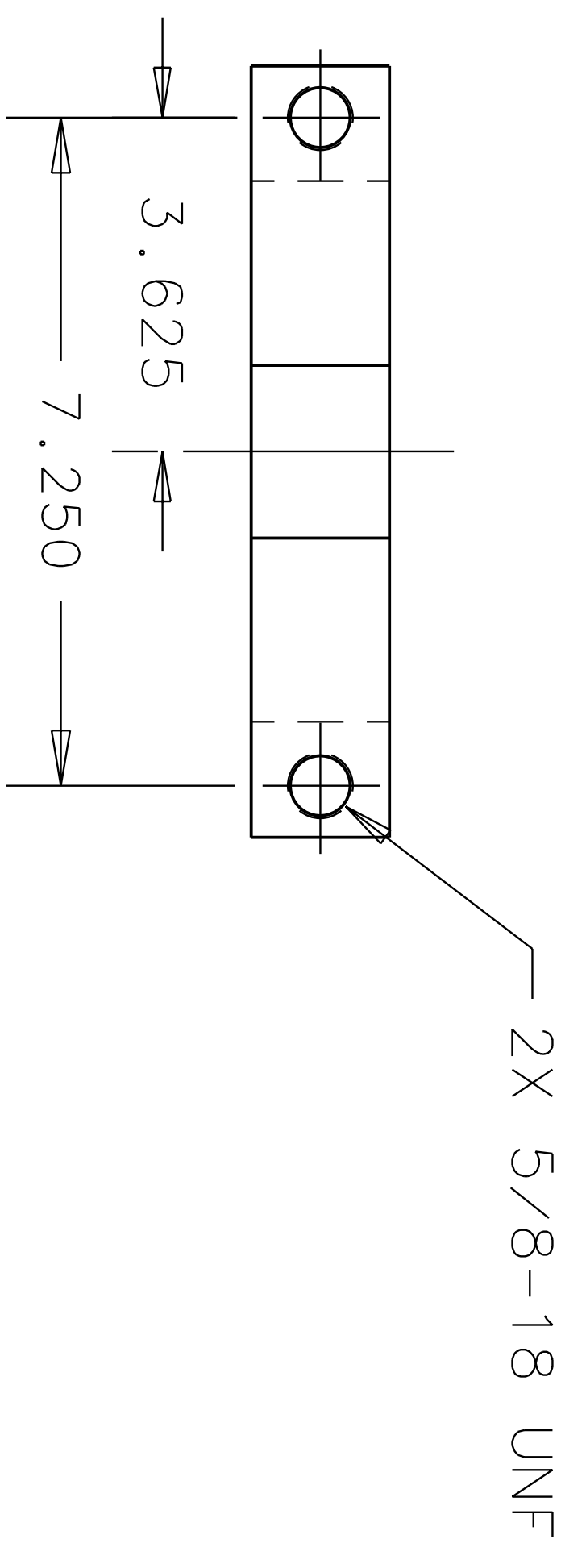


- NOTES: (UNLESS OTHERWISE SPECIFIED)
1. FILLETS: R.015 MAX
  2. BREAK ALL SHARP EDGES .01/.02 X 45°.
  3. THIS DRAWING HAS BEEN RENUMBERED. THE PREVIOUS DRAWING NUMBER IS 1205437.
  4. MAKE FROM 300 SERIES STAINLESS STEEL.
  5. MACHINE ALL OVER  $\sqrt{64}$ .



REV	DATE	DRAWN BY	CHECKED	DOC	DGN/DESCRIPTION
A	9/20/99	C. CONLEY			E990349-00-R
B	4/25/00	L. JONES			E000232-00-R

DATE	DATE
DRAWN	
CHKD	
ENGR	
APPD	

UNLESS OTHERWISE SPECIFIED:  
 DIMENSION UNITS ARE inch (mm)  
 TOLERANCES ARE:  
 X.XXX:  $\pm$ .005  
 X.XX:  $\pm$ .01  
 ANGLES:  $\pm$ .25°

SCALE: 1/8" = 1" DRAWING NUMBER: D990555-B SHEET 1 OF 1

LOWER BEAM CLAMP

CALIFORNIA INSTITUTE OF TECHNOLOGY  
 MASSACHUSETTS INSTITUTE OF TECHNOLOGY  
 LIGO PROJECT  
 1-Dwg CAD file: D990555-B.dwg  
 ddc file: D990555-B.pdf

