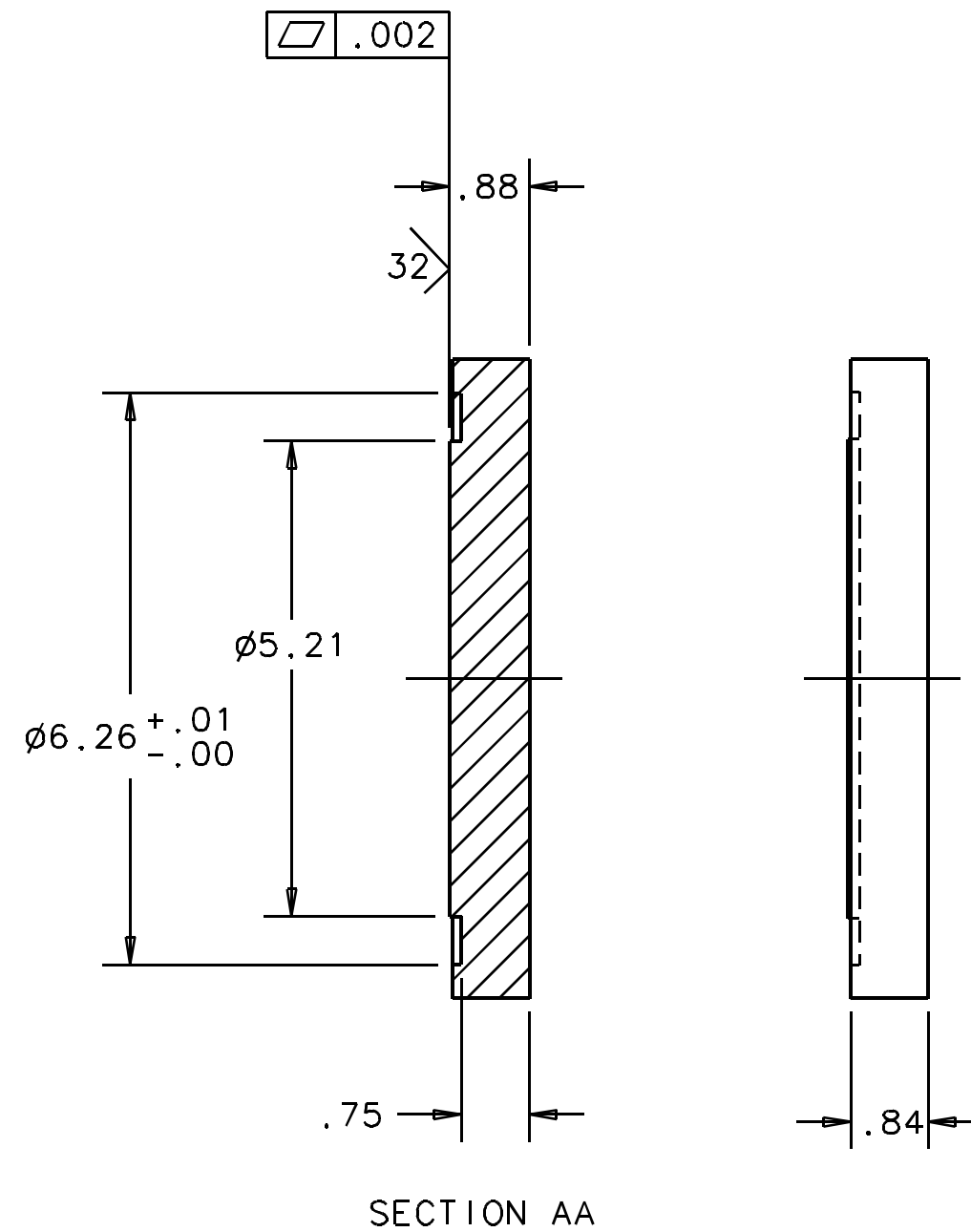
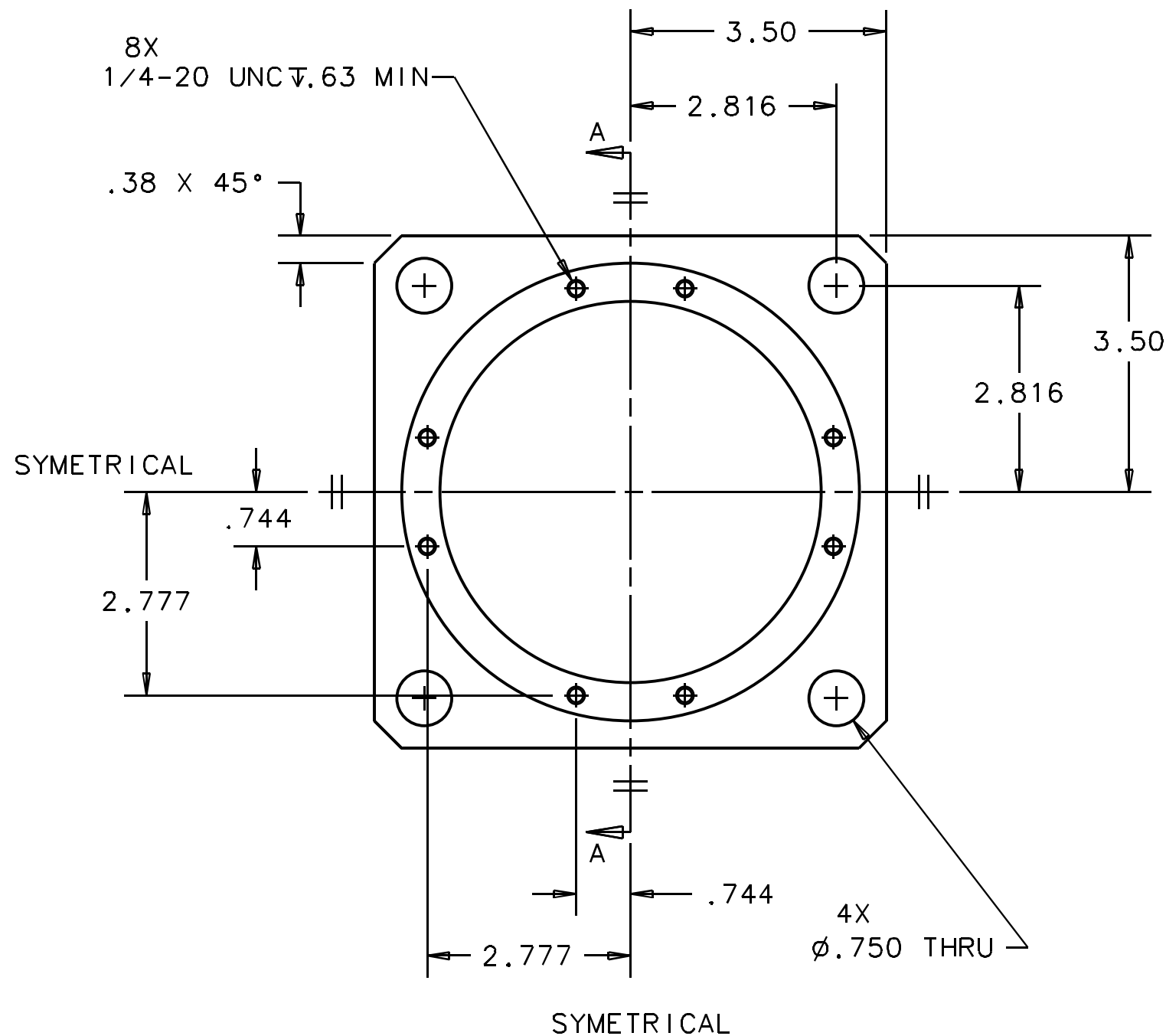


NOTES: (UNLESS OTHERWISE SPECIFIED)

1. FILLETS: R.015 MAX.
2. BREAK ALL SHARP EDGES .01/.02 X 45°.
3. THIS DRAWING HAS BEEN RENUMBERED. THE PREVIOUS DRAWING NUMBER IS 1205447.
4. MAKE FROM 400 SERIES STAINLESS STEEL.
5. HARDEN TO ROCKWELL 60/65

| REV | DATE | DRAWN BY | CHECKED | DCC | DCN/DESCRIPTION |
|-----|---------|-----------|---------|-----|-----------------|
| A | 9/20/99 | C. CONLEY | | | E990349-00-R |



| DRWN | DATE | CALIFORNIA INSTITUTE OF TECHNOLOGY MASSACHUSETTS INSTITUTE OF TECHNOLOGY | LIGO PROJECT |
|---|------|---|---|
| CHKD | | 1-Deas CAD file: D990564-A.dwg | |
| ENGR | | dcc file: D990564-A.pdf | |
| APPD | | TITLE | BASE SIDE CHAMBER DRIFT COMPENSATOR |
| UNLESS OTHERWISE SPECIFIED: DIMENSION UNITS ARE inch (mm) TOLERANCES ARE: X.XXX: \pm .01 X.XX: \pm .005 ANGLES: \pm .25° | | SCALE: 1/8 | SHEET 1 OF 1 |
| NEXT ASSEMBLY: | | SIZE B | DRAWING NUMBER D990564-A |