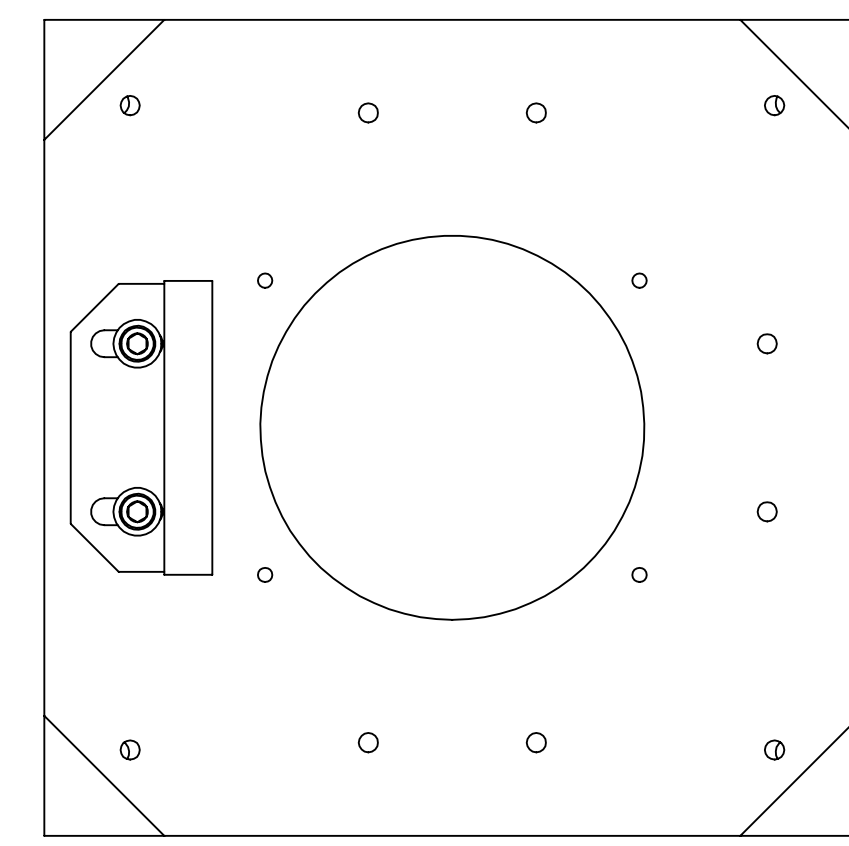
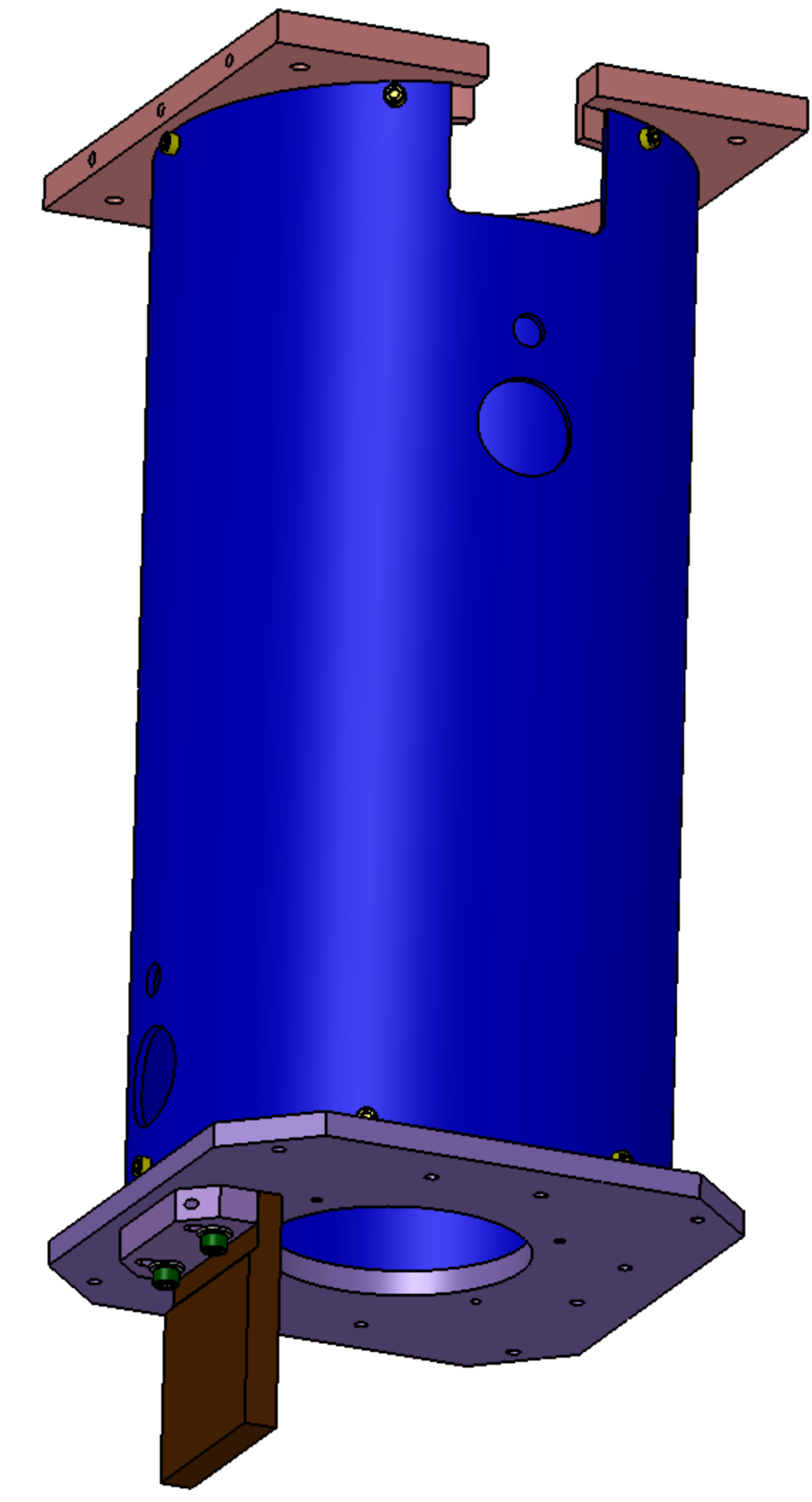
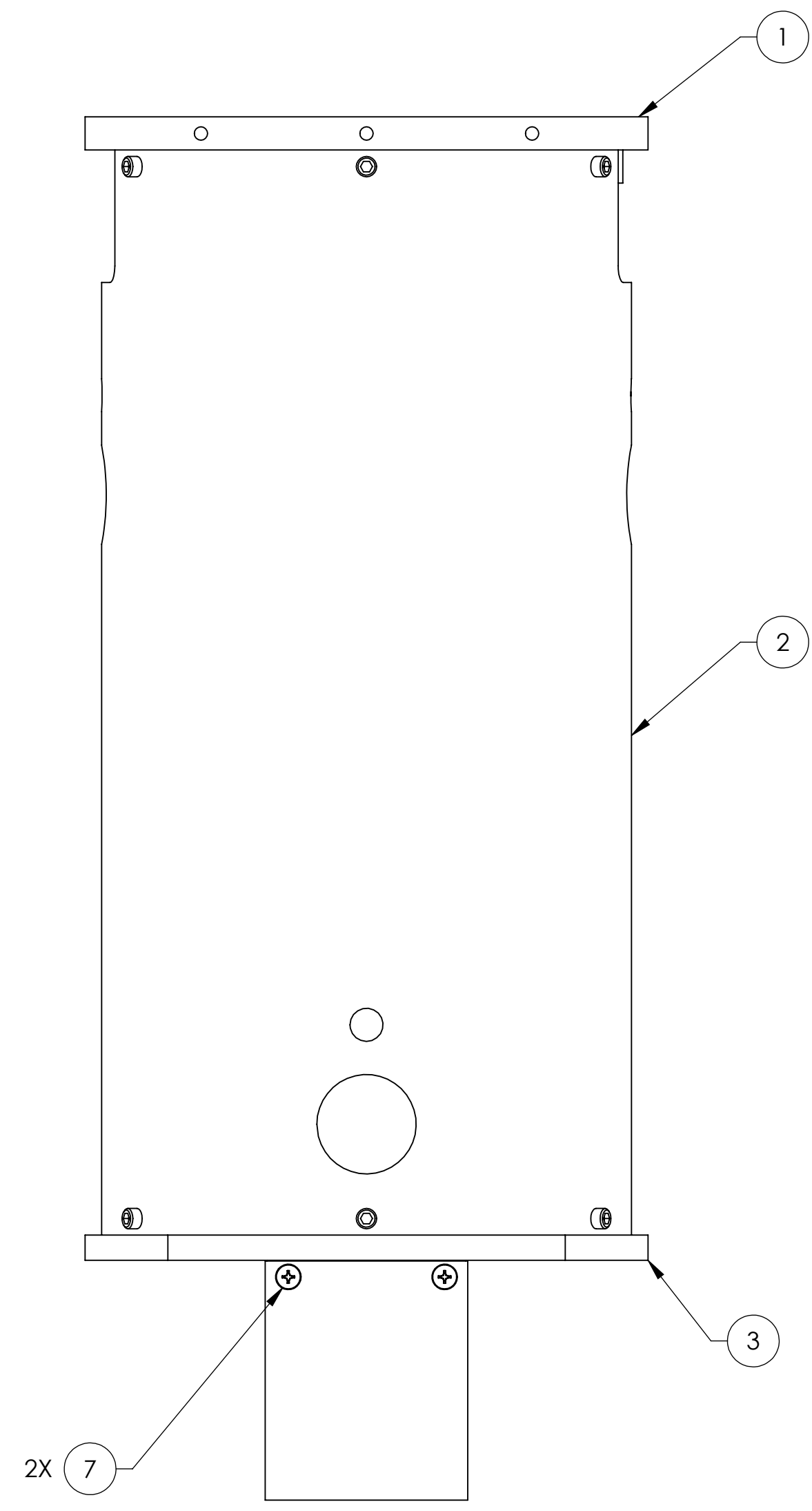
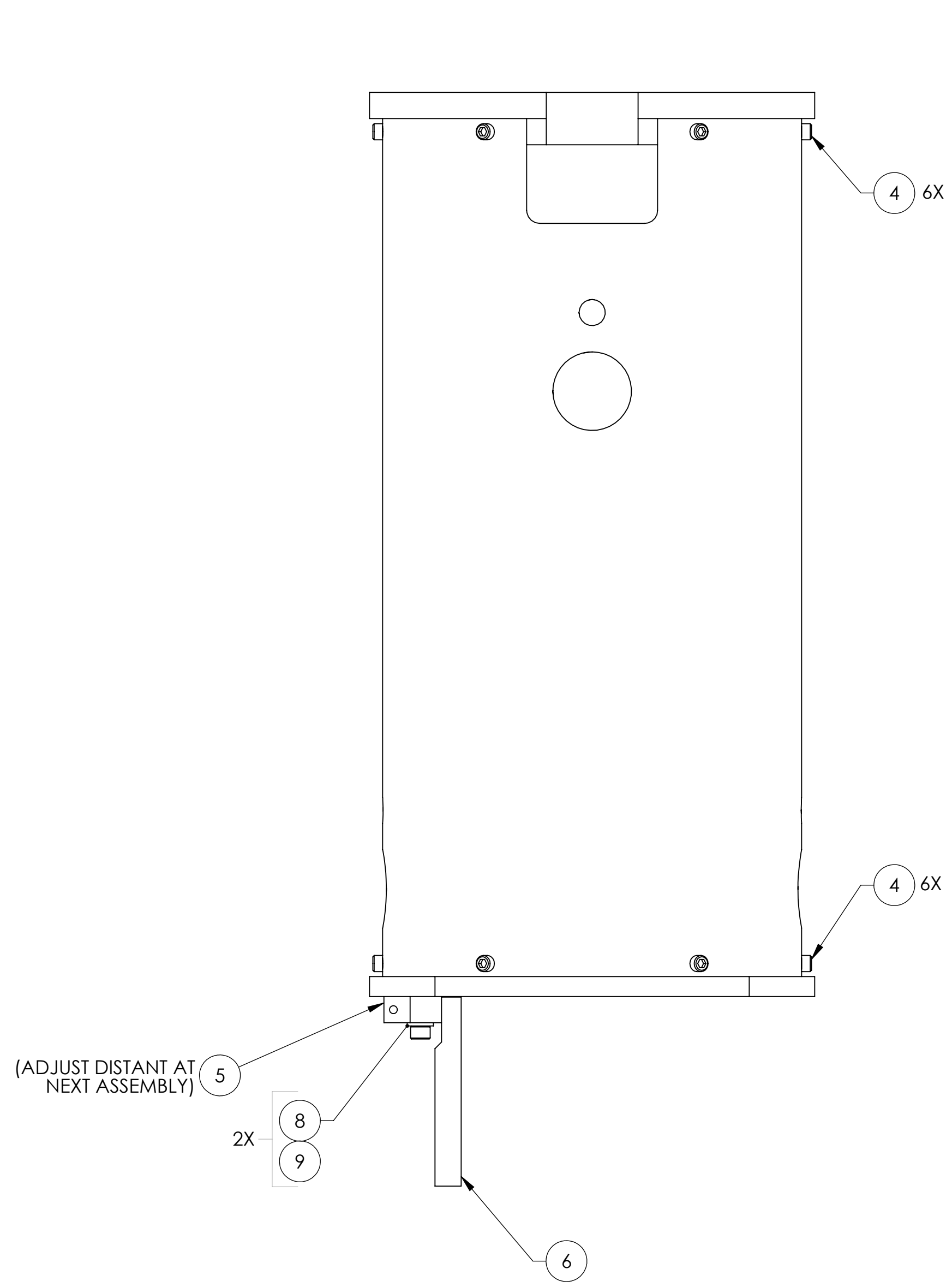


REV.	DATE	DCN #	DRAWING TREE #
v1	4 APR 2011	E1100216	E1000653
v2	15 SEP 2011	E1100335	-
-	-	-	-



ITEM NO.	PART NUMBER	DESCRIPTION	MATERIAL	REQ	SPARE	TOTAL
9	95435A755	SCREW SHCS #.25-20 X .75, McMASTER	TITANIUM	2		2
8	93286A044	WASHER #25 ALUM, McMASTER	6061-T6	2		2
7	90233A815	FLAT HD SCREW # 10-24 X .50, McMASTER	TITANIUM	2		2
6	D1000909	SLC COPPER PLATE	COPPER	1		1
5	D1000929	SLC COPPER SUPPORT PLATE	6061-T6 Al	1		1
4	-	SCREW, SOCKET HEAD CAP, #10-24 UNC-2A X 0.5 LONG, FULLY THREADED	300 SSSL	12		12
3	D1002617	SLC DAMPING TUBE LOWER PLATE	6061-T6 Al	1		1
2	D1002561	SLC DAMPING 8 DIA TUBE	6061-T6 Al	1		1
1	D1002560	SLC DAMPING TUBE TOP PLATE	6061-T6 Al	1		1

NOTES AND TOLERANCES: (UNLESS OTHERWISE SPECIFIED)

- INTERPRET DRAWING PER ASME Y14.5-1994.
- REMOVE ALL SHARP EDGES, R.02 MIN.
- DO NOT SCALE FROM DRAWING.
- ALL MACHINING FLUIDS MUST BE FULLY SYNTHETIC, FULLY WATER SOLUBLE AND FREE OF SULFUR, SILICONE, AND CHLORINE.

DIMENSIONS ARE IN INCHES

TOLERANCES:
 .XX ±
 .XXX ±

ANGULAR ± °

MATERIAL: N/A
 FINISH: N/A

LIGO CALIFORNIA INSTITUTE OF TECHNOLOGY
 MASSACHUSETTS INSTITUTE OF TECHNOLOGY

SYSTEM: ADVANCED LIGO
 SUB-SYSTEM: AOS
 NEXT ASSY: D1001011

PART NAME
 SLC EDDY CURRENT DAMPING 8 DIA TUBE ASSY

DESIGNER: N.Nguyen (01 Jun 2010)
 DRAFTER: N.Nguyen (24 AUG 2010)
 CHECKER: M. Smith (01 NOV 2010)
 APPROVAL: D. Coyne (10 NOV 2010)

SIZE: D
 DWG. NO.: D1002564
 SCALE: 1:1
 PROJECTION: [Symbol]

REV. v2
 SHEET 1 OF 1

D1002564_AslLIGO_AOS_SLC Eddy Current Damping 8 Dia Tube Assy, PART PDM REV: X.047, DRAWING PDM REV: X.011