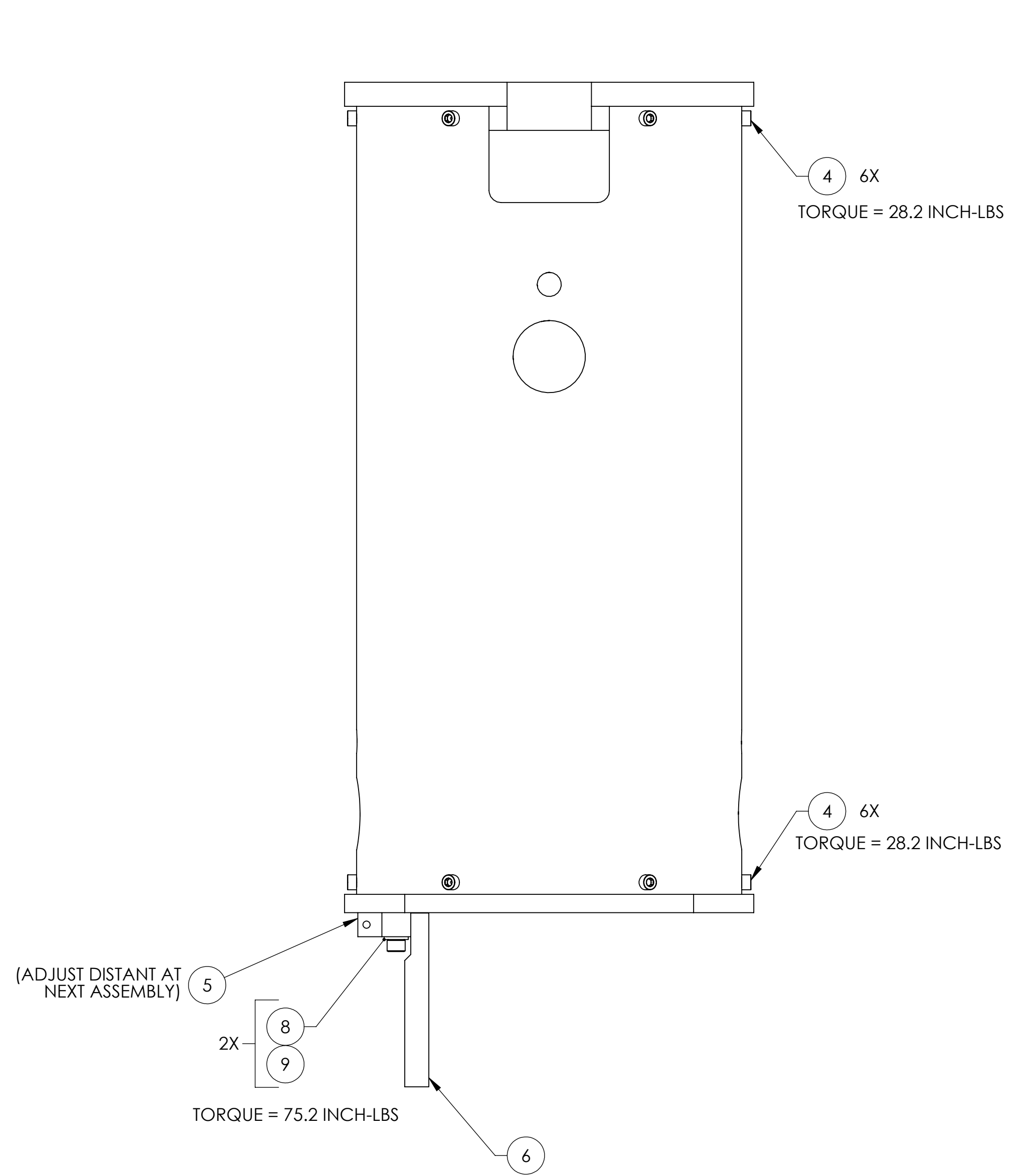
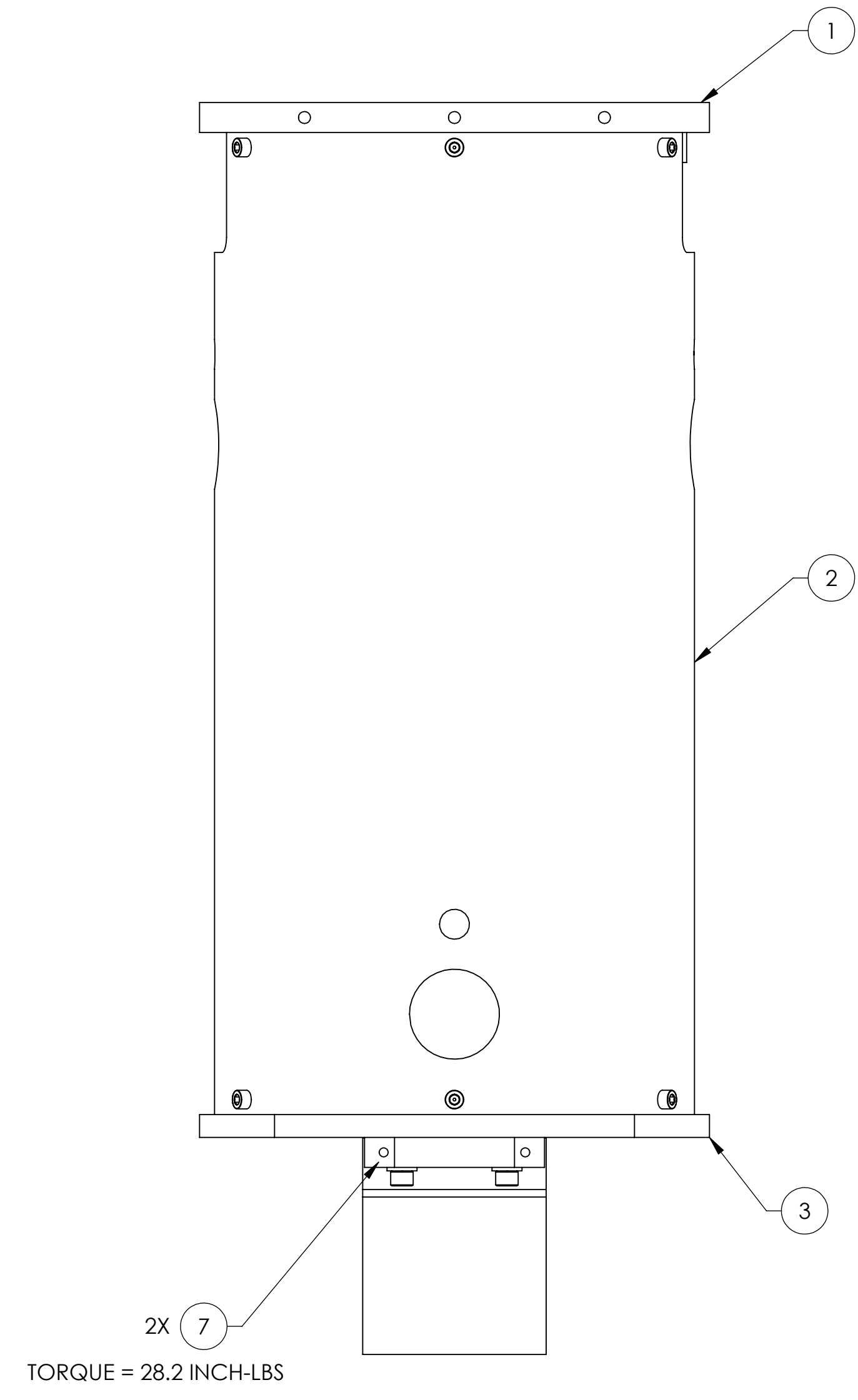


NOTES CONTINUED:

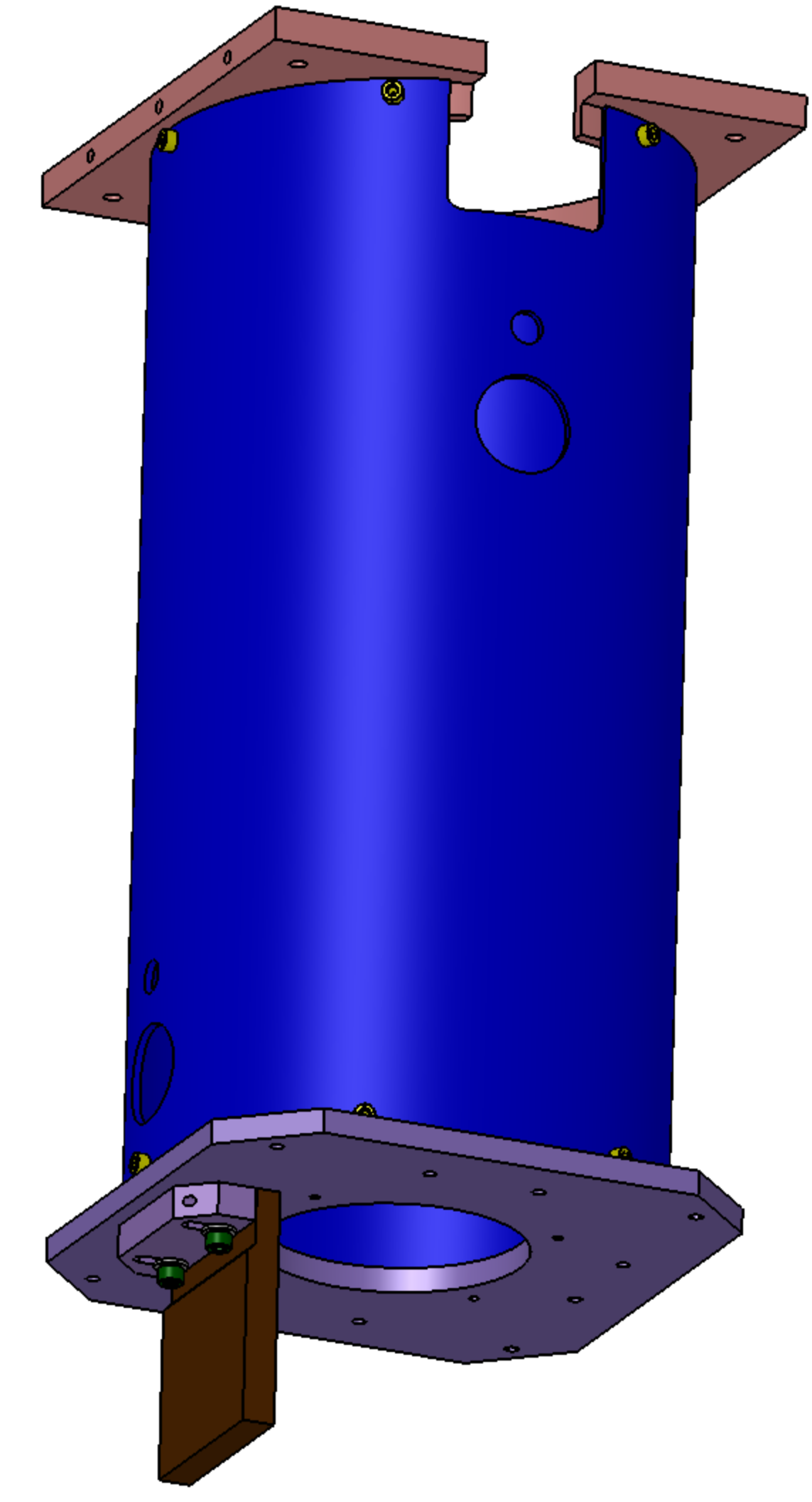
REV.	DATE	DCN #	DRAWING TREE #
v1	4 APR 2011	E1100216	E1000653
v2	15 SEP 2011	E1100335	E1000653
V3	08 Nov. 2011	E1101007	E1000653
v4	08 AUG 2012	E1101007	



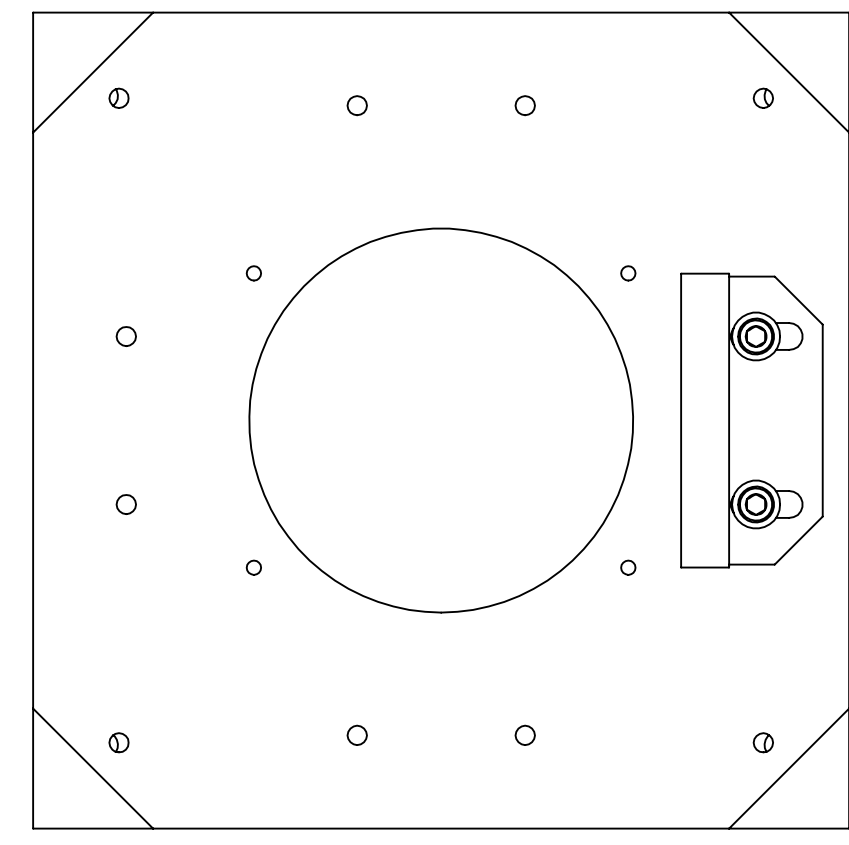
FRONT VIEW
01-LEFT MOUNTED COPPER PLATE
(ARM CAVITY BAFFLE)



RIGHT VIEW



GENERAL VIEW



BOTTOM VIEW

ITEM NO.	PART NUMBER	DESCRIPTION	MATERIAL	REQ	SPARE	TOTAL
9	95435A755	SCREW SHCS #.25-20 X .75, McMASTER	TITANIUM	2		2
8	93286A044	WASHER #25 ALUM, McMASTER	6061-T6	2		2
7	90233A815	FLAT HD SCREW # 10-24 X .50, McMASTER	TITANIUM	2		2
6	D1000909	SLC COPPER PLATE	COPPER	1		1
5	D1000929	SLC COPPER SUPPORT PLATE	6061-T6 Al	1		1
4	92200A242	SOCKET HEAD SCREW, #10-24 X .50 LG (MS16995-36)	300 SSSL	12		12
3	D1002617	SLC DAMPING TUBE LOWER PLATE	6061-T6 Al	1		1
2	D1002561	SLC DAMPING 8 DIA TUBE	6061-T6 Al	1		1
1	D1002560	SLC DAMPING TUBE TOP PLATE	6061-T6 Al	1		1

NOTES AND TOLERANCES: (UNLESS OTHERWISE SPECIFIED)

1. APPROXIMATE WEIGHT = 10.66 LBS.

DIMENSIONS ARE IN INCHES

TOLERANCES:
.XX ± .03
.XXX ± .010

ANGULAR ± 1.0°

LIGO CALIFORNIA INSTITUTE OF TECHNOLOGY
MASSACHUSETTS INSTITUTE OF TECHNOLOGY

SYSTEM: ADVANCED LIGO SUB-SYSTEM: AOS

PART NAME: SLC EDDY CURRENT DAMPING 8 DIA TUBE ASSY

DESIGNER: N.Nguyen 01 Jun 2010 SIZE: DWG. NO. REV. v4

DRAFTER: N.Nguyen 24 AUG 2010

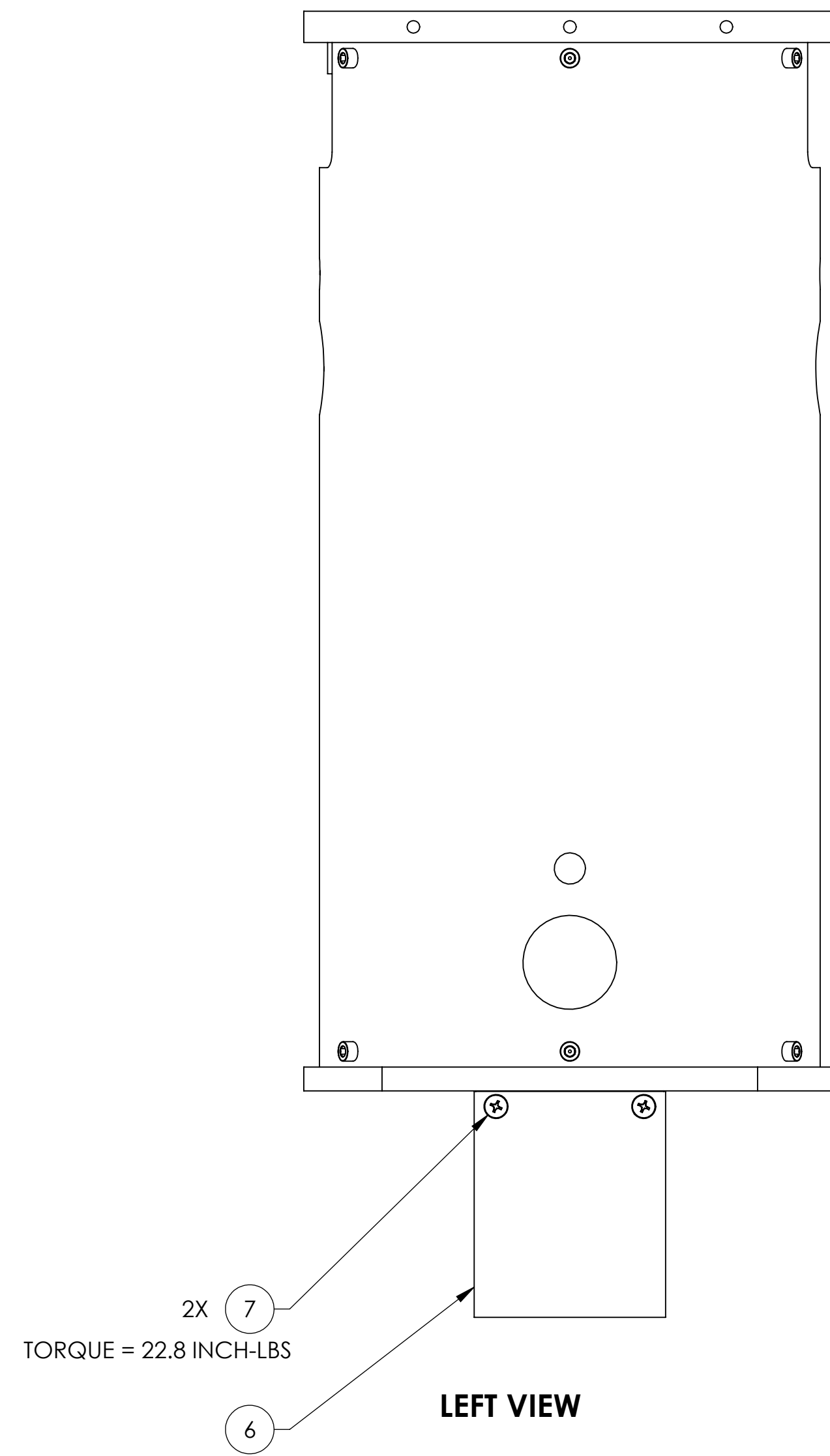
CHECKER: M. Smith 01 NOV 2010

APPROVAL: D. Coyne 10 NOV 2010

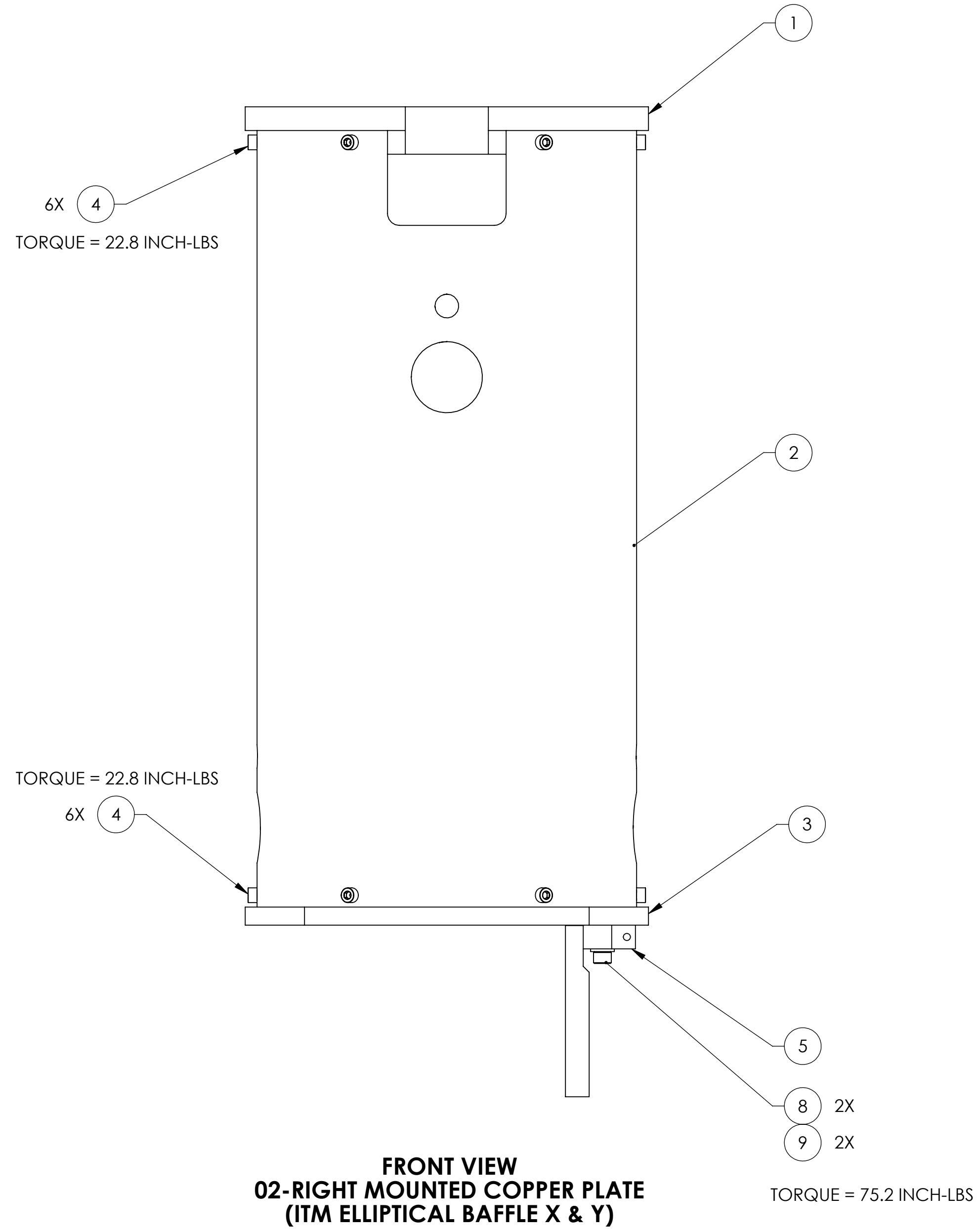
MATERIAL: N/A FINISH: N/A μinch NEXT ASSY: VARIABLE

SCALE: 1:2 PROJECTION: SHEET 1 OF 2

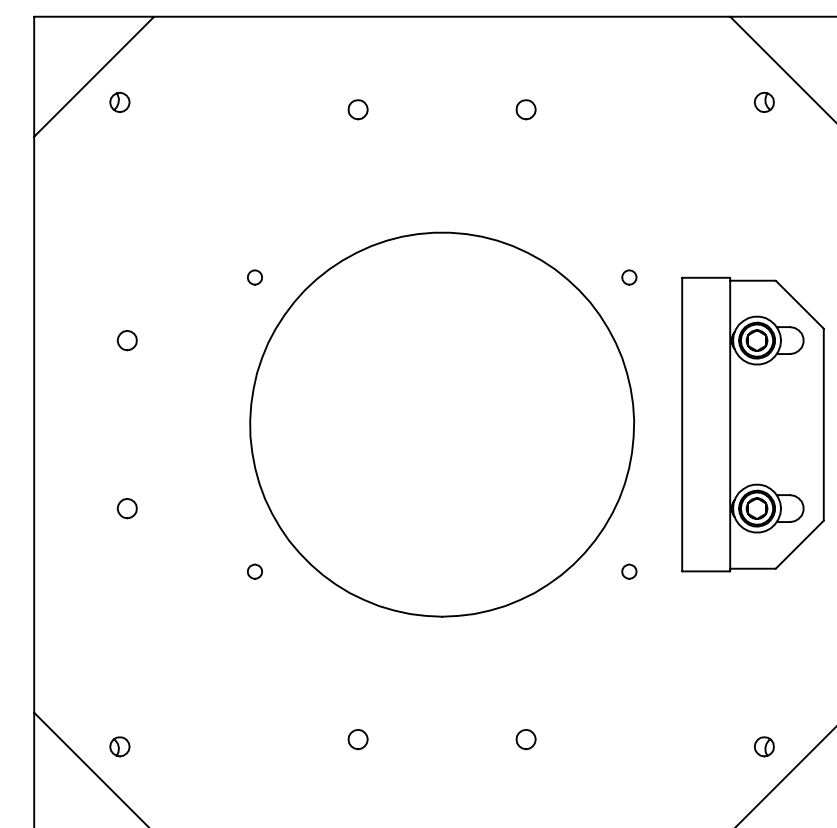
D1002564_AslLIGO_AOS_SLC Eddy Current Damping 8 Dia Tube Assy, PART PDM REV: X-074, DRAWING PDM REV: X-021



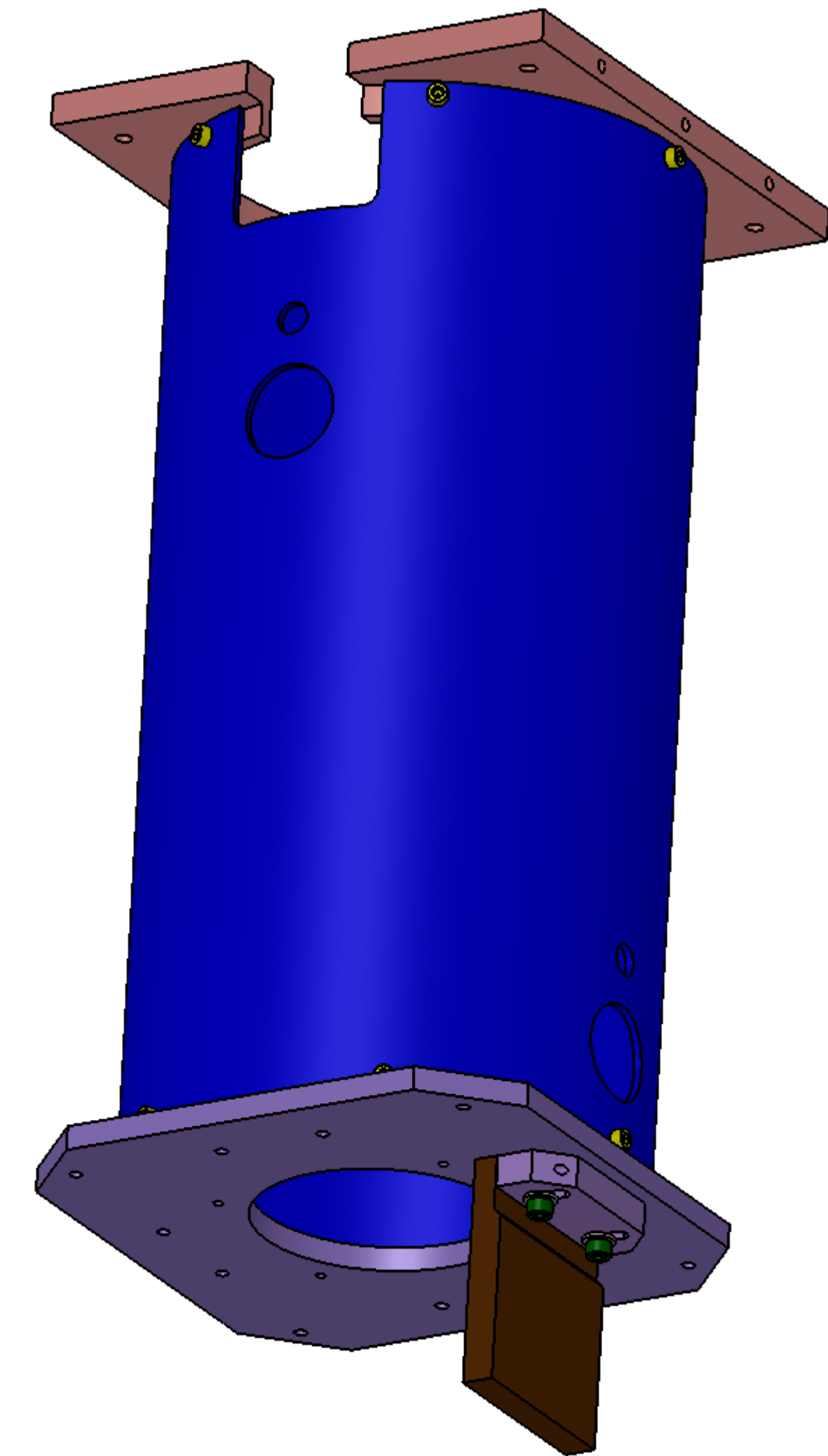
LEFT VIEW



FRONT VIEW
02-RIGHT MOUNTED COPPER PLATE
(ITM ELLIPTICAL BAFFLE X & Y)



BOTTOM VIEW



GENERAL VIEW

D1002564_AduLIGO_AOS_SLC Eddy Current Dampers 8 Dic Tube Assy, PART PDM REV: X-074, DRAWING PDM REV: X-021