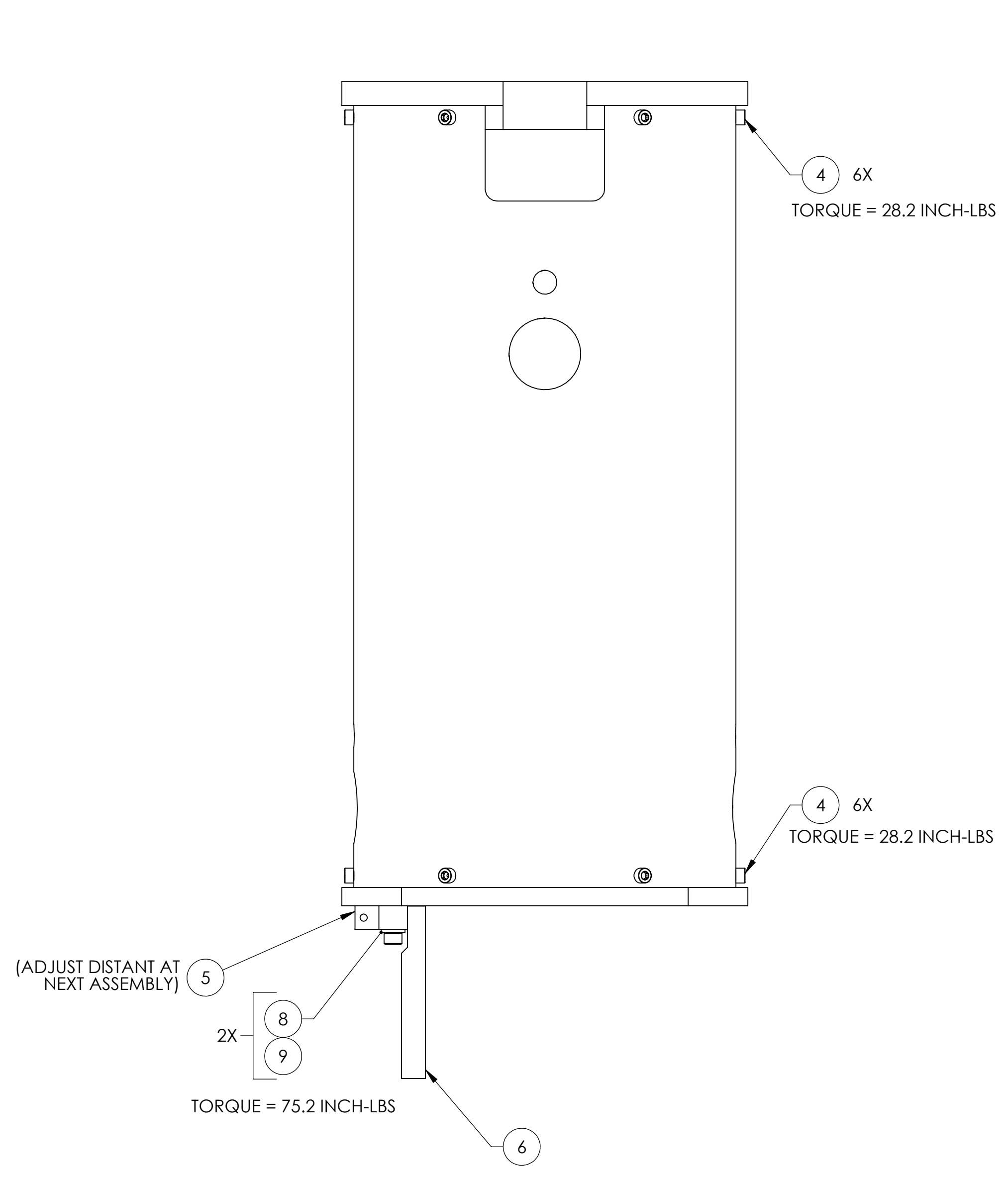
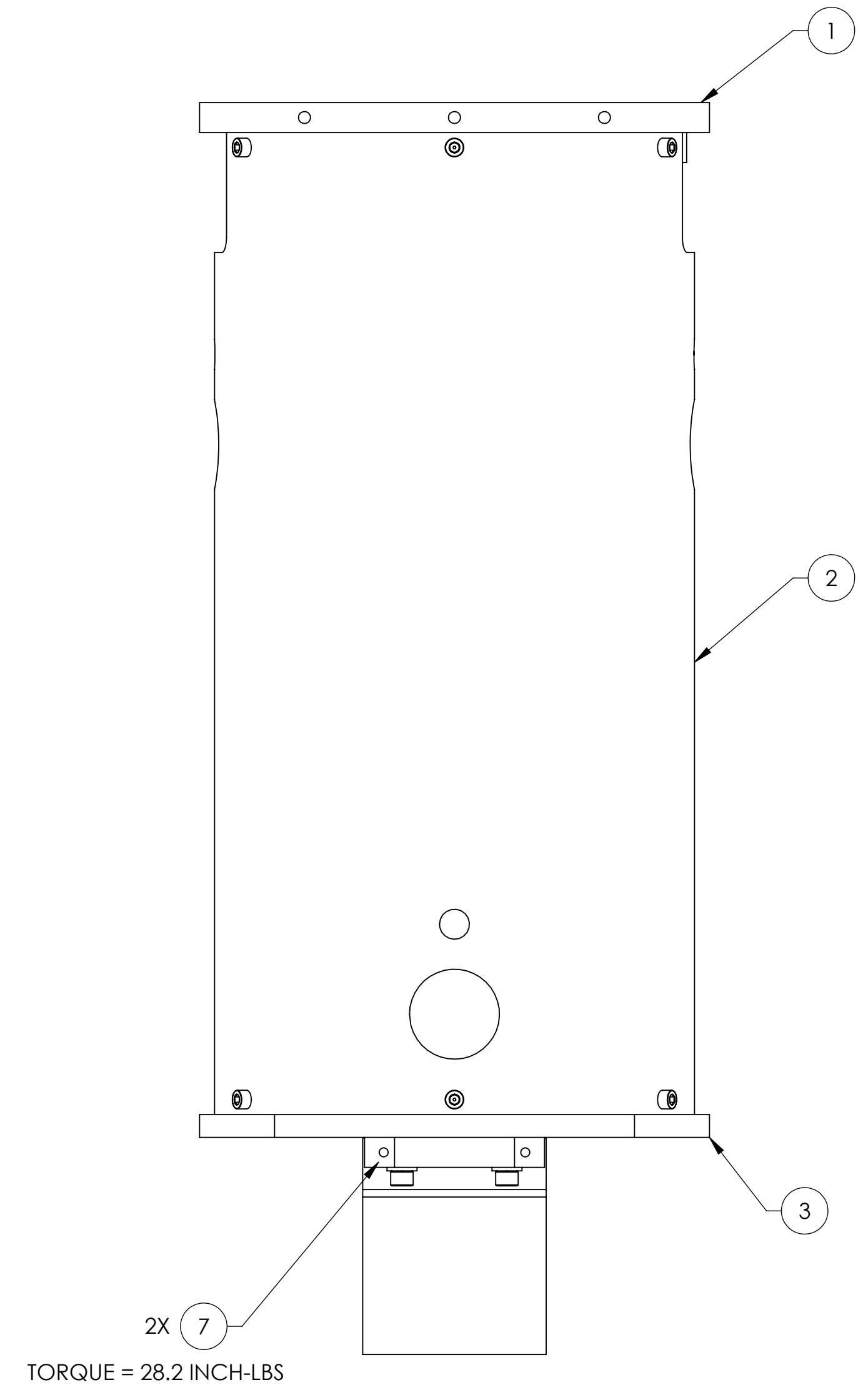


NOTES CONTINUED:

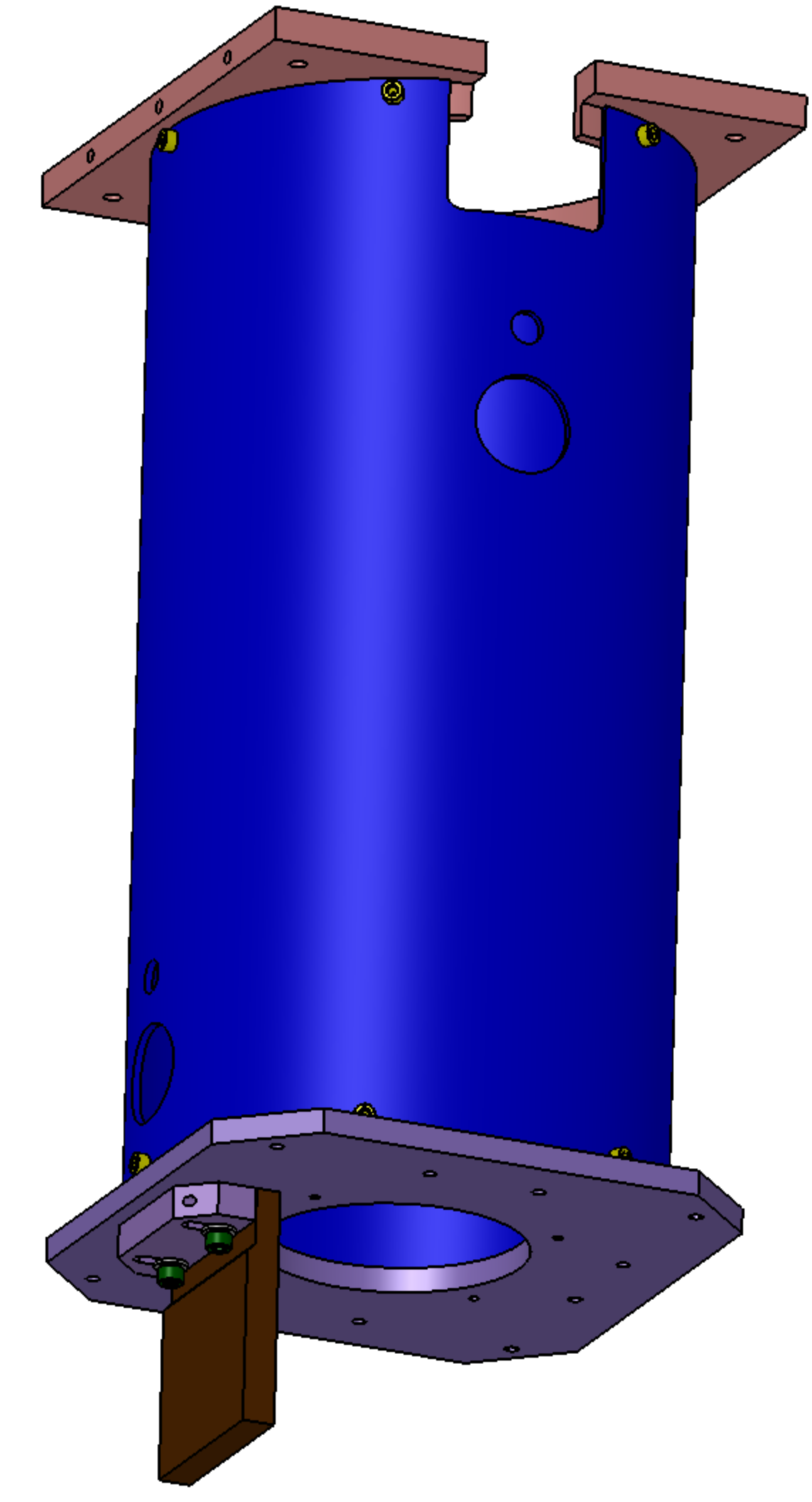
REV.	DATE	DCN #	DRAWING TREE #
v1	4 APR 2011	E1100216	E1000653
v2	15 SEP 2011	E1100335	E1000653
V3	08 Nov. 2011	E1101007	E1000653
v4	08 AUG 2012	E1101007	



FRONT VIEW
01-LEFT MOUNTED COPPER PLATE
(ARM CAVITY BAFFLE)

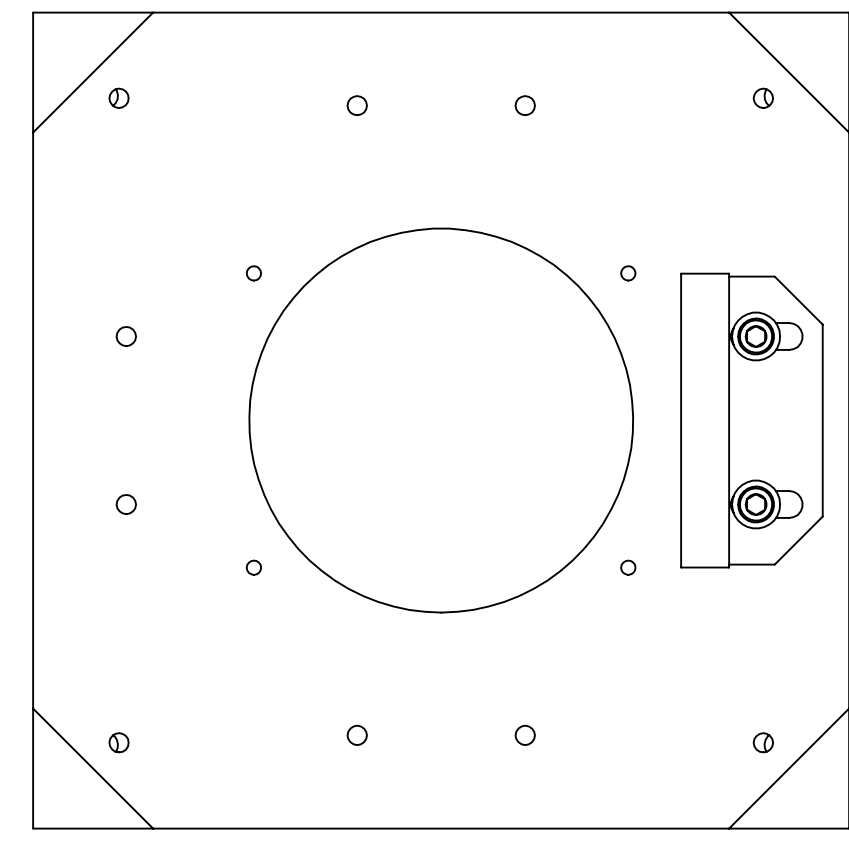


RIGHT VIEW



GENERAL VIEW

Drawing needs update -
1) Copper Plate modification
2) Add V1156 2-116 O-rings, qty = 2



BOTTOM VIEW

NOTES AND TOLERANCES: (UNLESS OTHERWISE SPECIFIED)	
DIMENSIONS ARE IN INCHES	
1. APPROXIMATE WEIGHT = 10.66 LBS.	
TOLERANCES: .XX ± .03 .XXX ± .010	
ANGULAR ± 1.0°	
MATERIAL	N/A
FINISH	N/A μinch

LIGO CALIFORNIA INSTITUTE OF TECHNOLOGY
MASSACHUSETTS INSTITUTE OF TECHNOLOGY

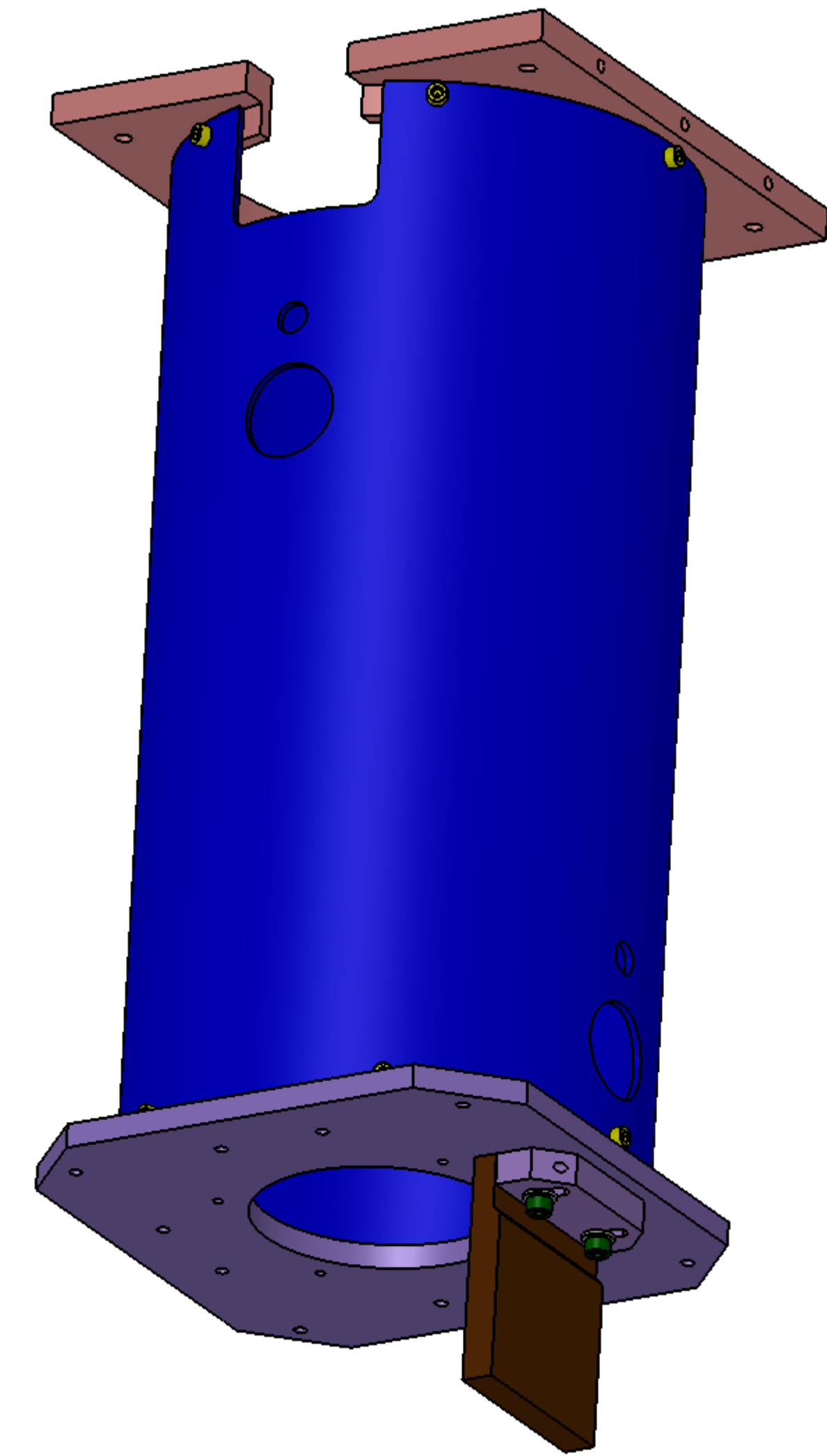
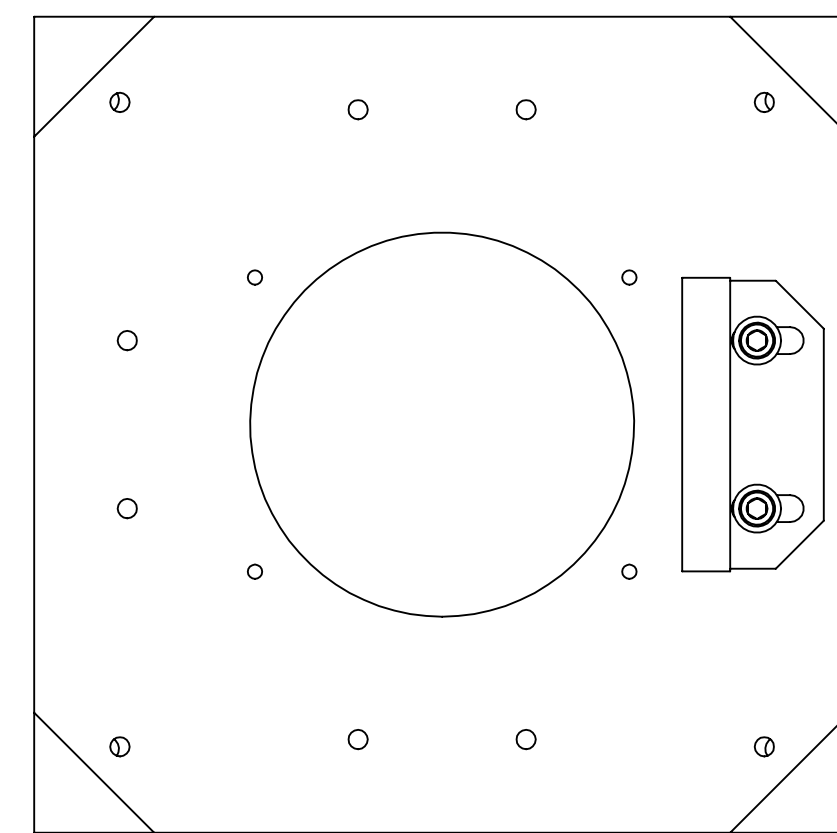
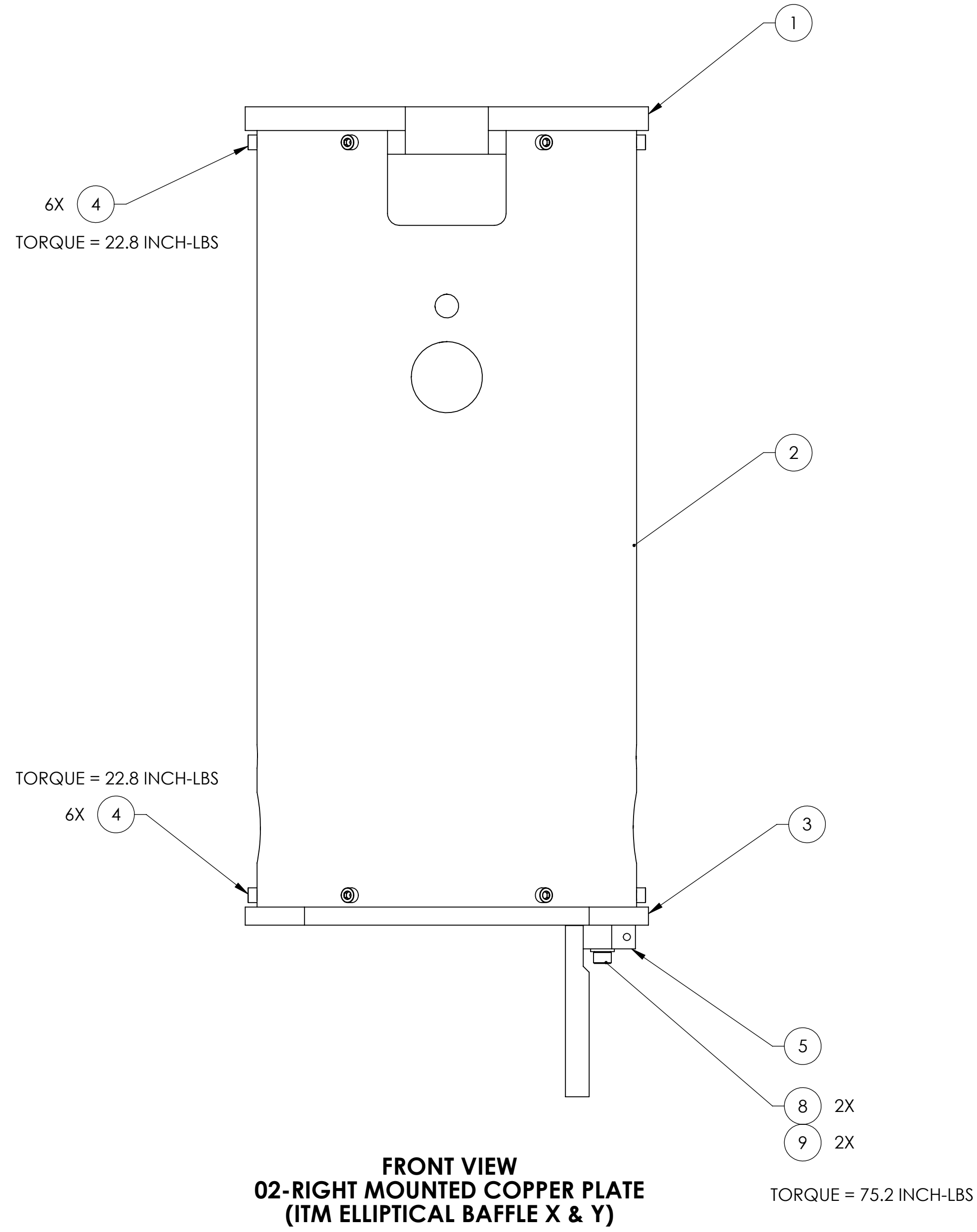
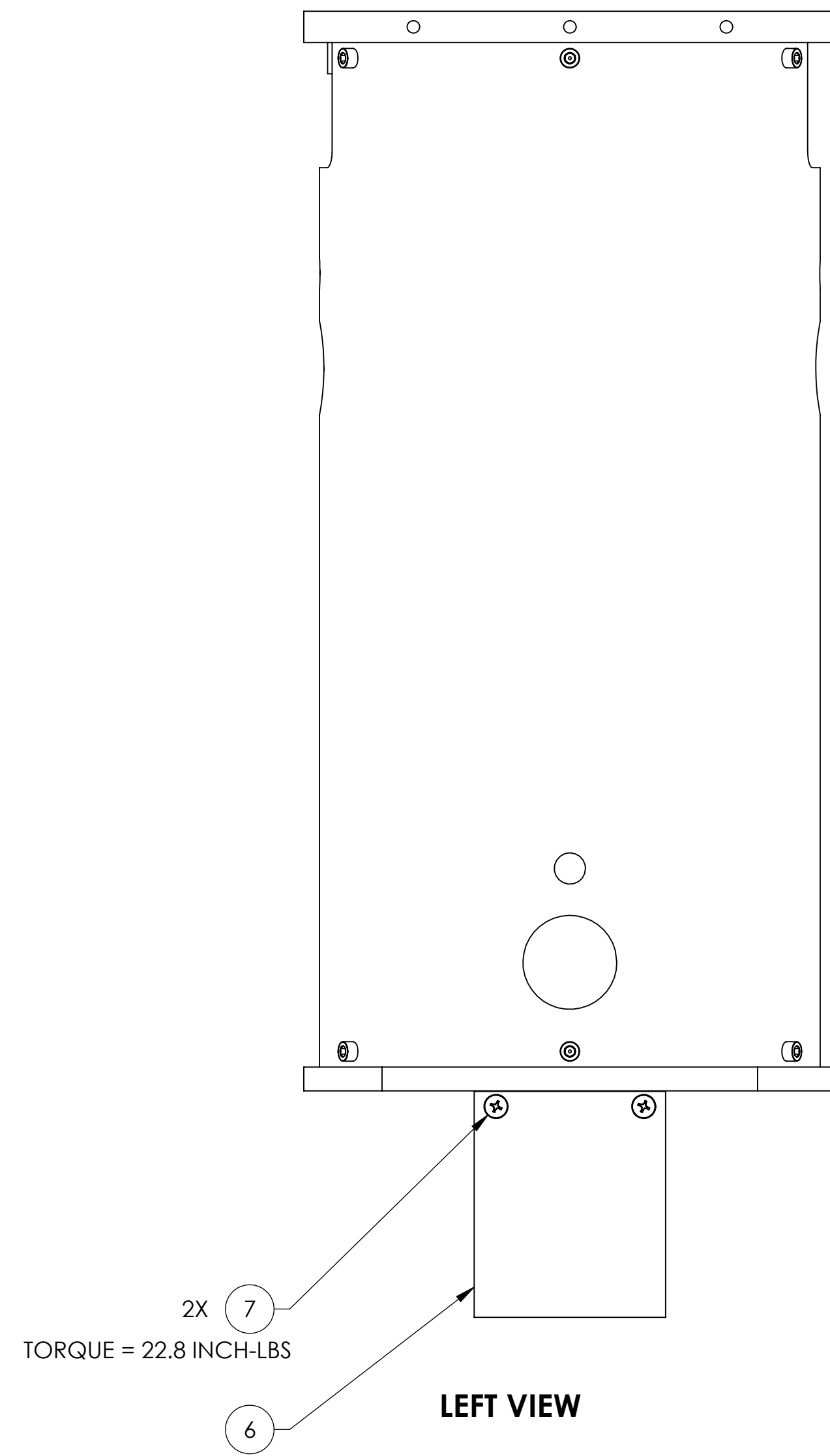
SYSTEM: ADVANCED LIGO SUB-SYSTEM: AOS

NEXT ASSY: VARIABLE

ITEM NO.	PART NUMBER	DESCRIPTION	MATERIAL	REQ	SPARE	TOTAL
9	95435A755	SCREW SHCS #.25-20 X .75, McMASTER	TITANIUM	2		2
8	93286A044	WASHER #25 ALUM, McMASTER	6061-T6	2		2
7	90233A815	FLAT HD SCREW # 10-24 X .50, McMASTER	TITANIUM	2		2
6	D1000909	SLC COPPER PLATE	COPPER	1		1
5	D1000929	SLC COPPER SUPPORT PLATE	6061-T6 Al	1		1
4	92200A242	SOCKET HEAD SCREW, #10-24 X .50 LG (MS16995-36)	300 SSSL	12		12
3	D1002617	SLC DAMPING TUBE LOWER PLATE	6061-T6 Al	1		1
2	D1002561	SLC DAMPING 8 DIA TUBE	6061-T6 Al	1		1
1	D1002560	SLC DAMPING TUBE TOP PLATE	6061-T6 Al	1		1

PART NAME		DESIGNER		DATE	SIZE	DWG. NO.	REV.
SLC EDDY CURRENT DAMPING 8 DIA TUBE ASSY		N.Nguyen		01 Jun 2010	D	D1002564	v4
DRAFTER		N.Nguyen		24 AUG 2010			
CHECKER		M. Smith		01 NOV 2010			
APPROVAL		D. Coyne		10 NOV 2010	SCALE: 1:2	PROJECTION:	SHEET 1 OF 2

D1002564_AudiGO_AOS_SLC Eddy Current Damping 8 Dia Tube Assy, PART PDM REV: X-074, DRAWING PDM REV: X-021



D1002564_AduLIGO_ACS_SLC Eddy Current Dampers 8 Dic Tube Assy. PART PDM REV: X-074. DRAWING PDM REV: X-021